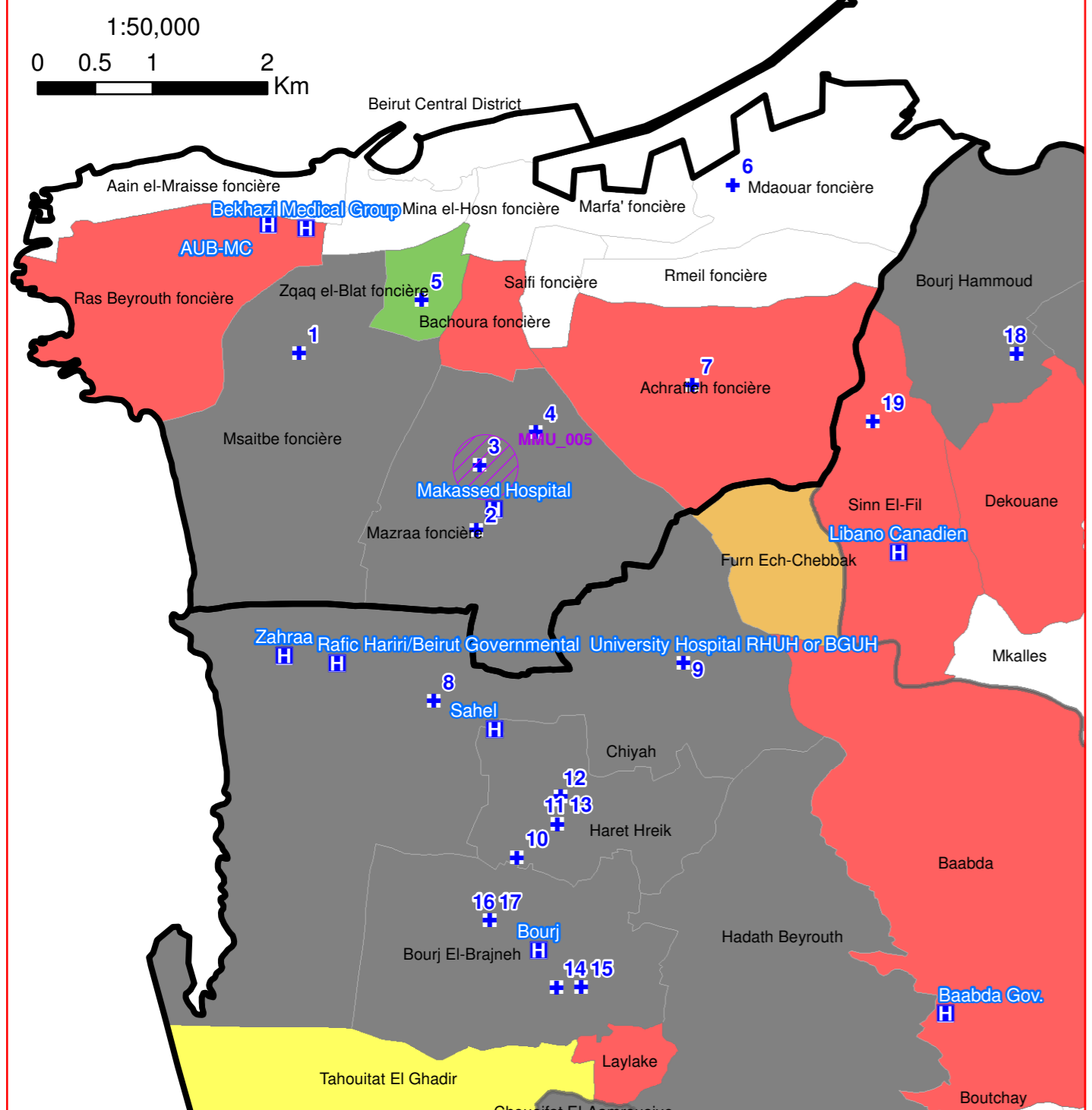
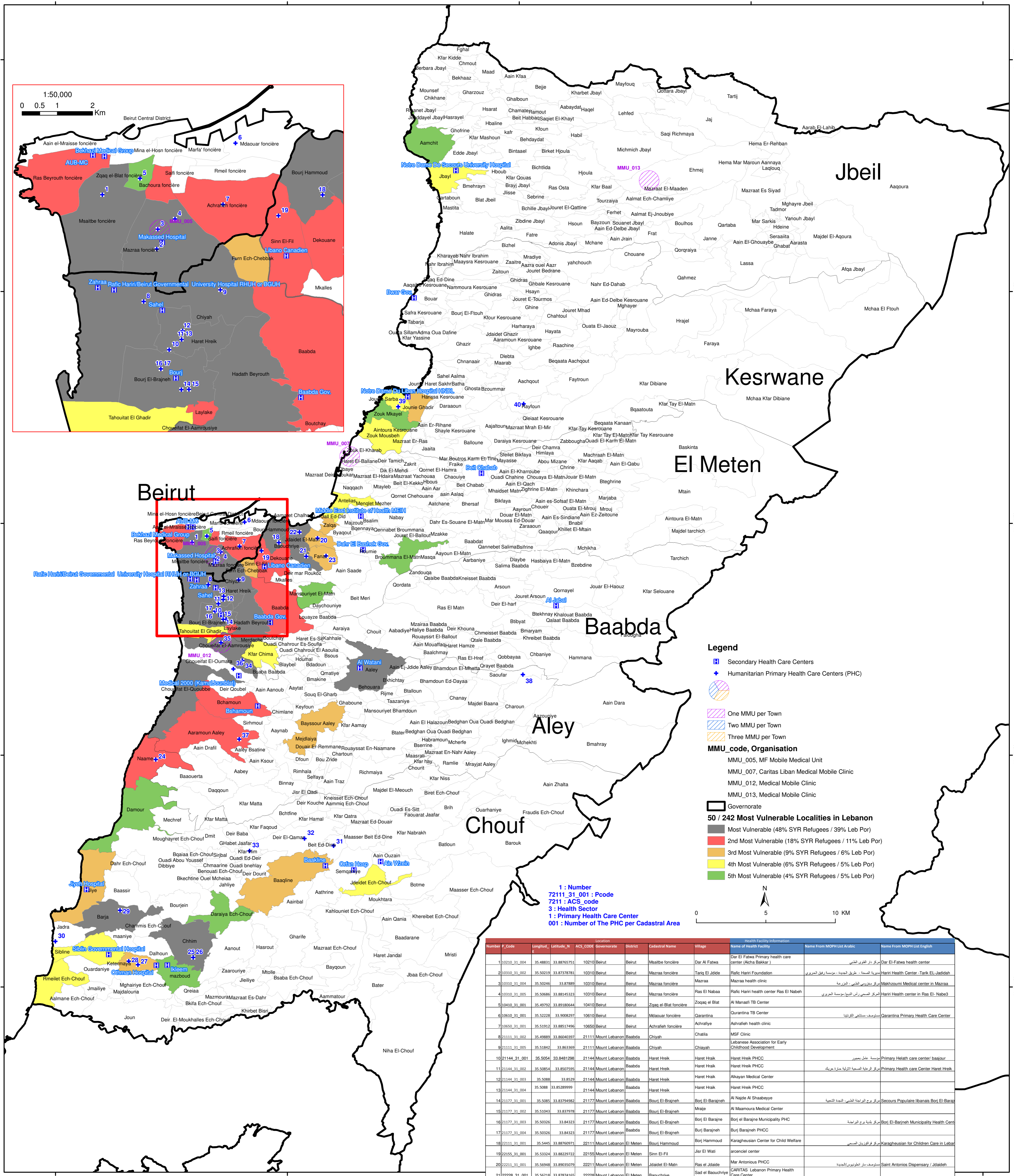


SYRIA REFUGEE RESPONSE

LEBANON Beirut and Mount Lebanon Governorates

Distribution of Health Centers PHC,SHC and MMU in the Most Vulnerable Localities in Lebanon



Legend

- Secondary Health Care Centers
- Humanitarian Primary Health Care Centers (PHC)
- One MMU per Town
- Two MMU per Town
- Three MMU per Town

MMU_code, Organisation

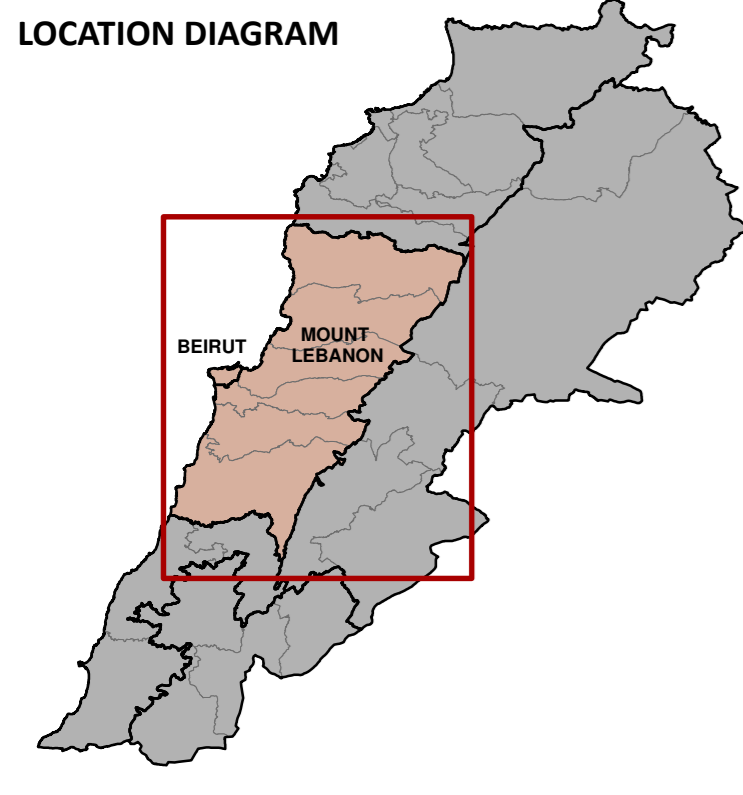
- MMU_005, MF Mobile Medical Unit
- MMU_007, Caritas Liban Medical Mobile Clinic
- MMU_012, Medical Mobile Clinic
- MMU_013, Medical Mobile Clinic

50 / 242 Most Vulnerable Localities in Lebanon

- Most Vulnerable (48% SYR Refugees / 39% Leb Por)
- 2nd Most Vulnerable (18% SYR Refugees / 11% Leb Por)
- 3rd Most Vulnerable (9% SYR Refugees / 6% Leb Por)
- 4th Most Vulnerable (6% SYR Refugees / 5% Leb Por)
- 5th Most Vulnerable (4% SYR Refugees / 5% Leb Por)

1 : Number
72111_31_001 : Pcode
7211 : ACS_code
3 : Health Sector
1 : Primary Health Care Center
001 : Number of The PHC per Cadastral Area

Number	P_code	Longitude	Latitude	ACS_CODE	Location	Governorate	District	Cadastral Name	Village	Name of Health Facility	Name From MDPH List Arabic	Name From MDPH List English
1	10210_31_001	35.48831	33.88765751	10210	Beirut	Beirut	Msaibe foncière	Dar Al Fatwa	Dar Al Fatwa Primary health care center (Alcha Bakkar)	مركز دار الفاتوا الطبي	Dar El-Fatwa health center	
2	10310_31_002	35.50219	33.87378781	10310	Beirut	Beirut	Mazraa foncière	Tariq El Jdeide	Rafic Hariri Foundation	مركز طارق السيد - مؤسسة الحريري	Hariri Health Center /Tarik EL-Jadidah	
3	10310_31_004	35.50246	33.87888	10310	Beirut	Beirut	Mazraa foncière	Mazraa	Mazraa health clinic	مركز مزرعوس الطبي المزرعة	Makhsoumi Medical center in Mazraa	
4	10310_31_005	35.50686	33.88145323	10310	Beirut	Beirut	Mazraa foncière	Ras El Nabaa	Rafic Hariri health center Ras El Nabeh	المركز الطبي - راس النابح - مؤسسة الحريري	Hariri Health center in Ras El- Nabeh3	
5	10410_31_001	35.49792	33.89180644	10410	Beirut	Beirut	Zoqaq el-Blat foncière	Zoqaq el Blat	Al Mansafi TB Center	مركز المناسفي لمرض السل	Al Mansafi TB Center	
6	10610_31_001	35.52228	33.9008297	10610	Beirut	Beirut	Msaour foncière	Qarantina	Qarantina TB Center	مركز قارنتينا لمرض السل	Qarantina Primary Health Care Center	
7	10650_31_001	35.51912	33.88517496	10650	Beirut	Beirut	Achrafieh foncière	Achrafieh	Achrafieh health clinic	مركز اشرفيه الطبي	Achrafieh health clinic	
8	21111_31_002	35.49889	33.86040397	21111	Mount Lebanon	Baabda	Chiyah	Chiyah	MSP Clinic	مركز مس بي	MSP Clinic	
9	21111_31_005	35.51842	33.863369	21111	Mount Lebanon	Baabda	Chiyah	Chiyah	Lebanese Association for Early Childhood Development	جمعية لبنانية للتدخل المبكر	Primary Health care center/ bajour	
10	21144_31_001	35.5054	33.8481298	21144	Mount Lebanon	Baabda	Haret Hreik	Haret Hreik	Haret Hreik PHCC	مركز حريت الطبي	Haret Hreik PHCC	
11	21144_31_002	35.50854	33.8507595	21144	Mount Lebanon	Baabda	Haret Hreik	Haret Hreik	Haret Hreik PHCC	مركز حريت الطبي	Primary Health care center Haret Hreik	
12	21144_31_003	35.5088	33.8529	21144	Mount Lebanon	Baabda	Haret Hreik	Haret Hreik	Alkayam Medical Center	مركز الكيام الطبي	Alkayam Medical Center	
13	21144_31_004	35.5088	33.8528999	21144	Mount Lebanon	Baabda	Haret Hreik	Haret Hreik	Haret Hreik PHCC	مركز حريت الطبي	Haret Hreik PHCC	
14	21177_31_001	35.5085	33.8379482	21177	Mount Lebanon	Baabda	Bourj El-Brajneh	Borj El-Brajneh	Al Najdeh Al Shaabeyeh	مركز النجدة الشعبي	Secours Populaire libanais Borj El-Brajeh	
15	21177_31_002	35.5085	33.837978	21177	Mount Lebanon	Baabda	Bourj El-Brajneh	Mraie	Al Maamoura Medical Center	مركز الممرورة الطبي	Al Maamoura Medical Center	
16	21177_31_003	35.50326	33.84323	21177	Mount Lebanon	Baabda	Bourj El-Brajneh	Borj El-Brajneh	Borj el-Brajneh Municipality PHC	مركز بلدية برج البراجنة	Borj el-Brajneh Municipality Health Center	
17	21177_31_004	35.50326	33.84323	21177	Mount Lebanon	Baabda	Bourj El-Brajneh	Borj El-Brajneh	Borj El-Brajneh PHCC	مركز حريت البراجنة	Borj El-Brajneh PHCC	
18	21231_31_001	35.5445	33.8760971	22111	Mount Lebanon	El Meten	Bourj Hammoud	Bourj Hammoud	Center for Child Welfare	مركز رعاية اطفال حرم	Karagheusian Center for Child Welfare	
19	22155_31_001	35.53324	33.88229722	22155	Mount Lebanon	El Meten	Sinn El-Fil	Jar El Wali	arocenci center	مركز حريت الوالي	arocenci center	
20	22213_31_001	35.56948	33.80935079	22211	Mount Lebanon	El Meten	Jdaideh El-Matn	Ras el Jdaideh	Mar Antonis PHCC	مركز مار انتوني الطبي	Mar Antonis PHCC	
21	22228_31_001	35.56218	33.87874165	22228	Mount Lebanon	El Meten	Baouchiyye	Sad el Baouchiyye	CARITAS Lebanon Primary Health Care Center	مركز كاريتاس لبنان الطبي	Saint Antonis Dispensary / Jdaideh	
22	22228_31_003	35.5578	33.89425276	22228	Mount Lebanon	El Meten	Baouchiyye	Dacura	HIV/AIDS NAP Center	مركز فيروس نقص المناعة البشرية	HIV/AIDS NAP Center	
23	22419_31_001	35.575	33.8789972	22419	Mount Lebanon	El Meten	Fanar	Fanar	Fanar Medical Social Center	المركز الطبي الاجتماعي - الفنار	The Socio medical Center / El-Fanar	
24	23341_31_001	35.46486	33.747243	23141	Mount Lebanon	Chouf	Nahne	Nahne	MOSA	مركز النانة الطبي	MOSA	
25	23211_31_001	35.48909	33.61910024	23211	Mount Lebanon	Chouf	Chhim	Chhime	Chhim Governmental Health Centre	مركز حيم الحكومي	Chhim Governmental Health Center	
26	23211_31_002	35.48909	33.61910024	23211	Mount Lebanon	Chouf	Chhim	Chhime	Social Association Chhime	جمعية حيم الاجتماعية	Social Association Chhime	
27	23231_31_001	35.45335	33.61442	23231	Mount Lebanon	Chouf	Katemaya	Aaramoun	Rafik Hariri Foundation	مركز رفيق الحريري	Rafik Hariri Foundation	
28	23231_31_002	35.4474	33.61679	23231	Mount Lebanon	Chouf	Katemaya	Katemaya	The Awareness and Consolation Association	جمعية الوعي والتضامن	The Awareness and Consolation Association	
29	23251_31_001	35.44176	33.649664	23251	Mount Lebanon	Chouf	Barja	Barja	Cultural Club	مركز بارجا الثقافي	Cultural Club	
30	23271_31_001	35.3999	33.62956	23271	Mount Lebanon	Chouf	Jadra	Quadi Ez Zeyni	Rafik Hariri Foundation	مركز رفيق الحريري	Rafik Hariri Foundation	
31	23413_31_001	35.5799	33.69141007	23411	Mount Lebanon	Chouf	Beit Ed-Dine	Beit ed Dine	Beit Ed Dine TB Center	مركز بيت الدينة لمرض السل	Beit EdDine Governmental Health Center	
32	23413_31_002	35.56112	33.69618049	23419	Mount Lebanon	Chouf	Deir el-Qamar	Deir el Qamar	CARITAS Lebanon Primary Health Care Center	مركز كاريتاس لبنان الطبي	CARITAS Lebanon Primary Health Care Center	
33	23439_31_001	35.52552	33.6881703	23439	Mount Lebanon	Chouf	Kfar Him	Kfar Him	Kfarheem Primary Health Care Center	مركز كفر حيم الطبي	Kfarhim Primary Health Care Center	
34	24111_31_002	35.5086	33.81123565	24111	Mount Lebanon	Aley	Chouaflat El-Aamrousiye	Chouaflat	IHS (Islamic Health Care Society) Clinic, Primary Healthcare	مركز ايس ايه سي الطبي	IHS (Islamic Health Care Society) Clinic, Primary Healthcare	
35	24113_31_003	35.5078	33.8278948	24111	Mount Lebanon	Aley	Chouaflat El-Aamrousiye	Hay es Seltom	Maternal healthcare	مركز هاي اس سلتوم الطبي	Maternal healthcare	
36	24155_31_001	35.51508	33.80582988	24155	Mount Lebanon	Aley	Chouaflat El-Oumara	Chouaflat	Medical and Social Center- Chouaflat	مركز الشوافط الطبي والاجتماعي	Chouaflat Governmental Center	
37	24211_31_001	35.51885	33.76040996	24211	Mount Lebanon	Aley	Aaramoun Aaley	Aaramoun	Rafik Hariri Foundation	مركز رفيق الحريري	Hariri Foundation / Aaramoun Center	
38	24427_31_001	35.70234	33.802206	24427	Mount Lebanon	Chouf	Saoufar	Solar	Rafik Hariri Foundation	مركز رفيق الحريري	Rafik Hariri Foundation	
39	25111_31_001	35.62171	33.9747729	25111	Mount Lebanon	Kesrwane	Jounia Sarba	Sarba	CARITAS Lebanon Primary Health Care Center	مركز كاريتاس لبنان الطبي	CARITAS Lebanon Primary Health Care Center	
40	25413_31_001	35.70288	33.9734633	25411	Mount Lebanon	Kesrwane	Rayfoun	Rayfoun	CARITAS Lebanon Primary Health Care Center	مركز كاريتاس لبنان الطبي	CARITAS Lebanon Primary Health Care Center	



Notes
The boundaries, names and designations used on this map do not imply official endorsement of the United Nations. All data used are the best available at the time of map production.

Data Sources:
- Lebanese Border, Caza and Cadastral Boundaries: NPMPLT 2005.
- Geographic Projection WGS 1984
Calculation of the Most Vulnerable Localities was based on the following data sources:
1-Cadastral Boundary Shapefile which includes the 3rd admin level population distribution. The source of the shapefile is the CDR (Council for Development and reconstruction)
2-UNDP study of 2008. It states that 28.55% of the Lebanese population is estimated to be living under AUSD/capita/day based on data collected in 2004.
The poverty estimates from this study gives break down on "combined Caza" level (admin level 2), this is assumed to be same for all the municipalities under the caza boundaries.
3- The refugee population distribution. This data is frequently by UNHCR registration unit.
The top quintile of the vulnerability mapping includes 50 from 242 localities
4- Health data: Ministry of Public Health-Lebanon, Health 3w Matrix

GIS and Mapping by UNHCR. For information and updates contact Jad Ghosn: ghosn@unhcr.org
Maroun Sader: sader@unhcr.org
Map Production Date: 29 May 2014