

## Distribution of the Registered Syrian Refugees at the Cadastral Level

## Tripoli + 5 Districts

**Total No. of Household Registered** 43,009

**Total No. of Individuals Registered** 171,730

## Minié-Danniyé

## Zgharta

## Koura

## Batroun

# Bcharré

No. of Refugees per Cadastral

☐ Caza

### The No. indic

The boundaries, names and designations used on this map do not imply official endorsement of the United Nations. All data used are the best available at the time of map production.

- Geographic Projection WGS 1984

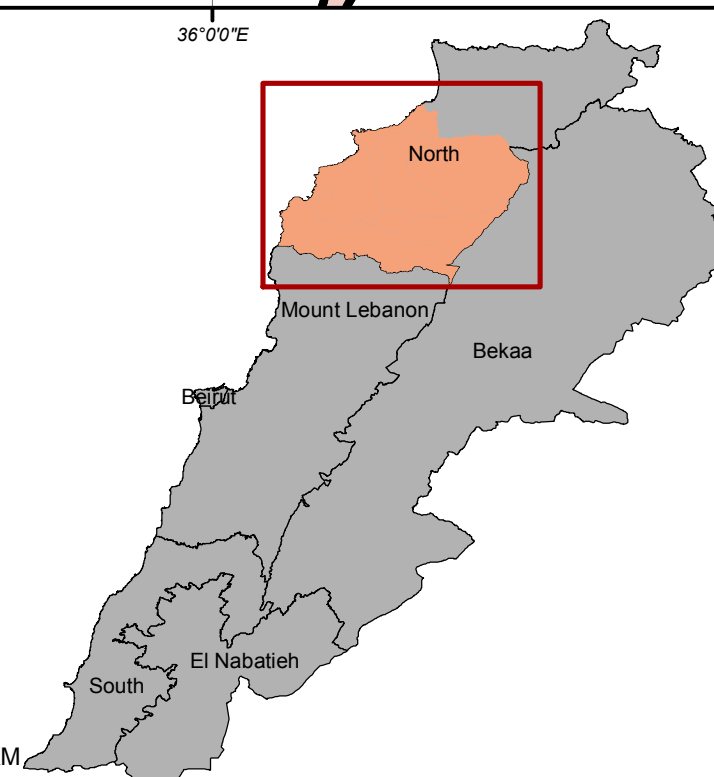
For more information contact Rana G. Ksaifi at [ksaifi@unhcr.org](mailto:ksaifi@unhcr.org)

contact Jad Ghosn: [ghosn@unhcr.org](mailto:ghosn@unhcr.org)

Maroun Sader: [sader@unhcr.org](mailto:sader@unhcr.org)

*NPMPLT: National Physical Master Plan for the Lebanese Territory*

*The No. indicates the registered refugees at the cadastral level*



### LOCATION DIAGRAM

