

KEY FACT

65 reproductive health (RH) kits, which include family planning methods and rape treatment, were distributed

HIGHLIGHTS:

During the month of September, two hospitals received health facility based training on Clinical Management of Rape in Bekaa and South regions. So far, a total of 30 health facilities all over Lebanon have been trained and equipped to receive survivors of rape. Moreover, 200,000 copies of the pregnancy card were printed and distributed among pregnant women from both the Syrian refugees and the Lebanese communities at the level of health facilities.

The reproductive health sub working group is compiling information on all RH awareness activities and material being implemented by different actors in order to develop a harmonized set of RH Health Education material at a later stage.

MOPH and UNFPA will be providing RH supplies and medicines (family planning methods, STI treatment, supplements and vitamins) to PHCCs part of the MOPH network as well as to other centres outside of the network, offering medical services to refugees and supported by different humanitarian actors.

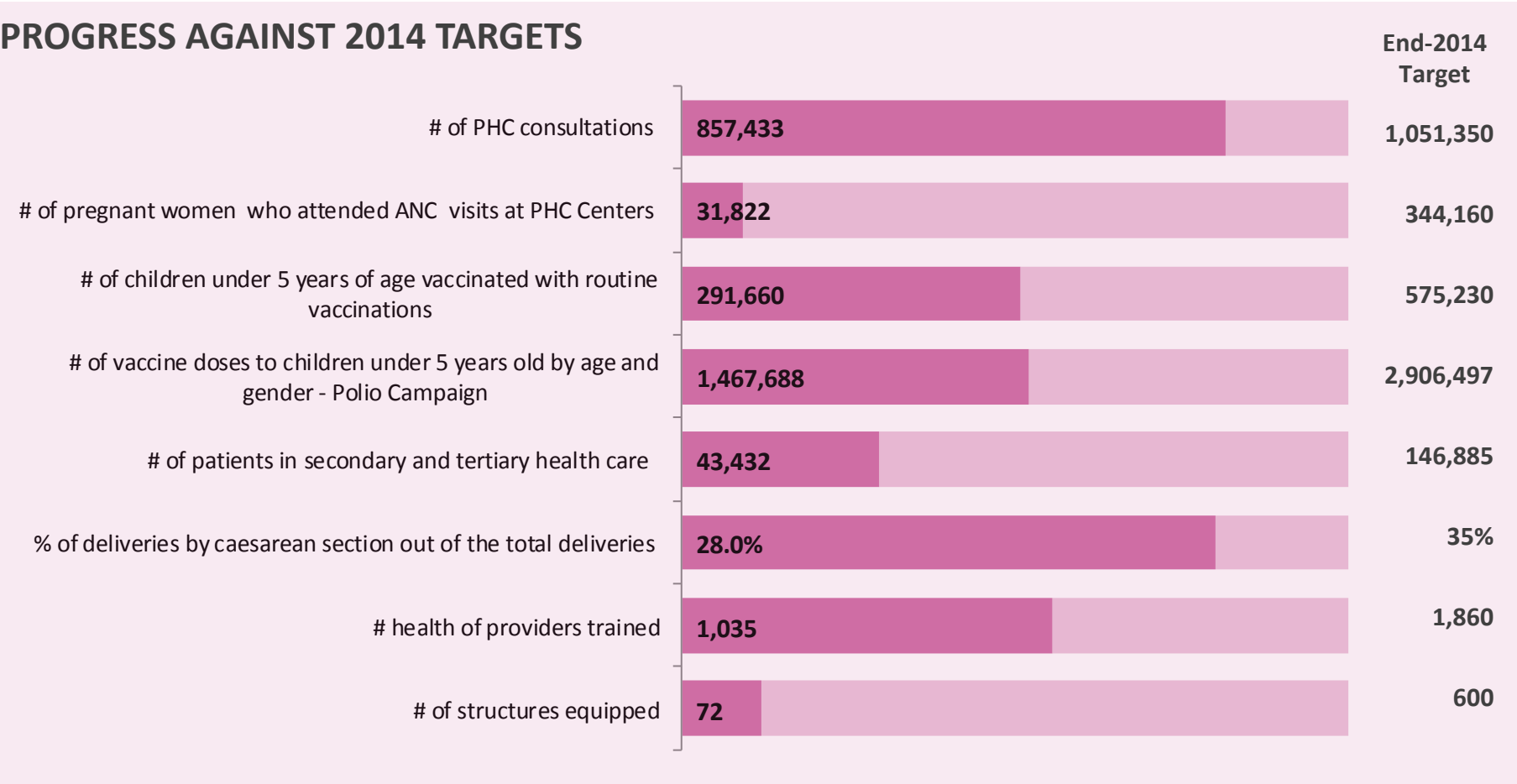


NEEDS ANALYSIS:

In Lebanon, since the beginning of the influx, health emergency actors involved in disaster relief started offering a wide range of health and RH interventions and services to the affected population. Yet there seem to be serious challenges and bottlenecks in reaching significant improvement in the overall health outcome in general and RH in particular. Syrian women refugees still experience various indicators of poor RH, including: unsatisfactory gynecologic conditions, pregnancy and delivery complications and poor birth outcomes. Findings demonstrated the need for better targeting of RH services in refugee settings.

Currently, MOPH and UNFPA will make RH supplies and medicines available to all centers receiving Syrian refugees. In addition, UNFPA, in coordination with all partners subscribing to the RH sub-working group and in close partnership with the Ministry of Public Health, will launch a situation analysis which aims at giving an overview about the current RH situation in the humanitarian context in Lebanon. The assessment will be conducted at both the community and health facility levels to understand the needs of the affected population. The results of the situation analysis will assist the government and humanitarian actors working in RH in developing appropriate programs and interventions targeting the affected population.

PROGRESS AGAINST 2014 TARGETS



Source: figures reported above reflect the information reported to Sector Coordinators by Partners participating in Working Groups

Leading Agencies: WHO - Alissar Rady- radya@who.int - UNHCR - Michael Woodman—woodman@unhcr.org
Reporting Agencies: