



KEY ACHIEVEMENT OF THE MONTH

893,478 refugees and vulnerable host members received food assistance.

HIGHLIGHTS:

WFP and its co-operating partners managed to reach some 886,556 Syrian refugees with the USD30 per individual food voucher. Some 5,050 newly arrived refugees were assisted with food parcels. Through the e-card, WFP injected an additional US\$26,5 million into the Lebanese economy. Other food security sector partners reached some 13,818 vulnerable individuals (1,872 of which were reached with RRP6 funding) among the four different caseloads, and in the process injected a further US\$1,7 million into the Lebanese economy.

The targeting questionnaire was finalised and endorsed by Food and Cash assistance actors.

The IOM and HRC presented results from a Livelihoods assessment of Lebanese Returnees in November. The food security situation of Lebanese Returnees was largely similar to that of Syrian Refugees.

The government of Lebanon launched the food assistance programme to vulnerable Lebanese living on less than USD2 per day, registered under the National Poverty Targeting Programme (NPTP). In November the government's NPTP reached out to some 27,209 individuals with food assistance.



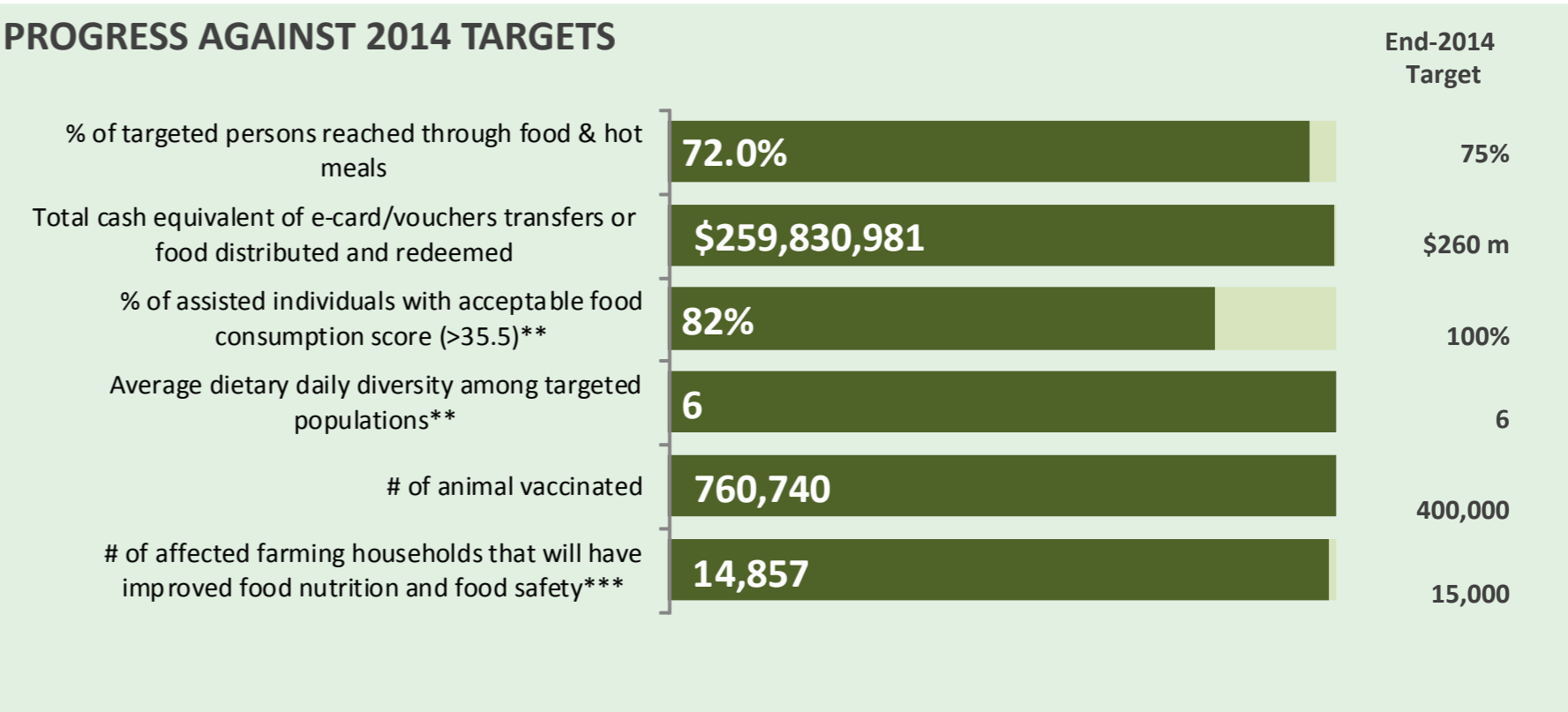
NEEDS ANALYSIS:

The need for food assistance remains a priority among Syrian refugees and other vulnerable groups, hence Food Security sector partners plan to continue food assistance for vulnerable groups in December. Partners plan to reach out to some 950,000 Syrian refugees and other population groups.

The government of Lebanon's emergency e-card for food assistance project under the NPTP programme will continue to expand as the project implementation and government capacity increases.

Food security and cash sector partners shall launch the targeting questionnaire with trainings of enumerators and testing the ODK. The targeting exercise will commence in December 2014.

PROGRESS AGAINST 2014 TARGETS



** Indicators are reported on a quarterly basis - *** Target changed and achievements reported since July 2014.

Source: figures reported above reflect the information reported to Sector Coordinators by Partners participating in Working Groups

Leading Agency: WFP - Naison CHAKATVA - naison.chakatsva@wfp.org
Reporting Agencies:

