


4th Sweep: August 6th - October 3rd, 2014

344  Active Informal Settlements

41 Inactive IS since the last sweep

286  Less than 4 shelter settlements

4,346  Shelters

75 New shelters identified after the 3rd sweep

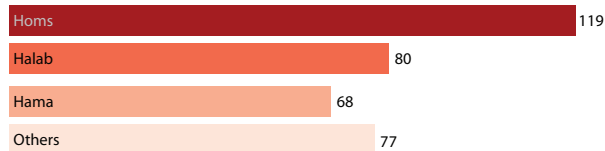
517  Shelters in < 4 settlements

24,802  Individuals

1,286 Total decrease of number of individuals in IS

3,440  Individuals in < 4 settlements

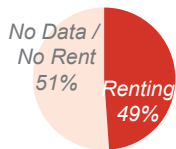
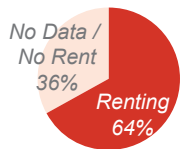
Places of Origin of Syrian Refugees



Refugee Renting* Lands

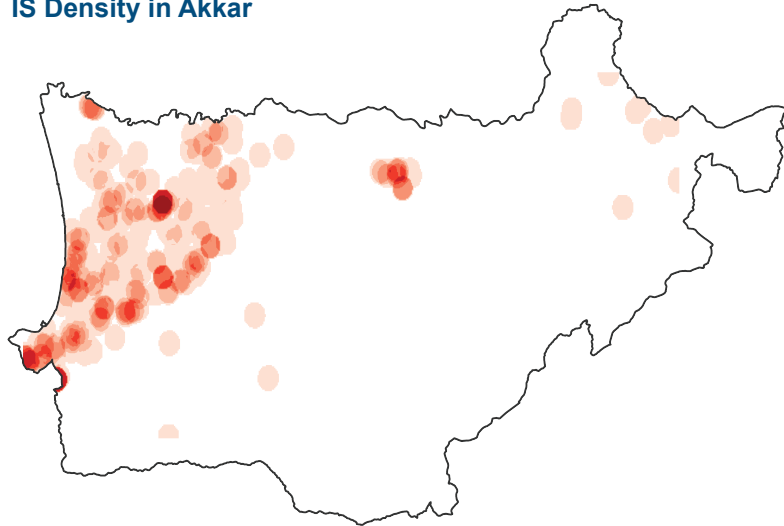
Informal Settlements

Less than 4 Shelters

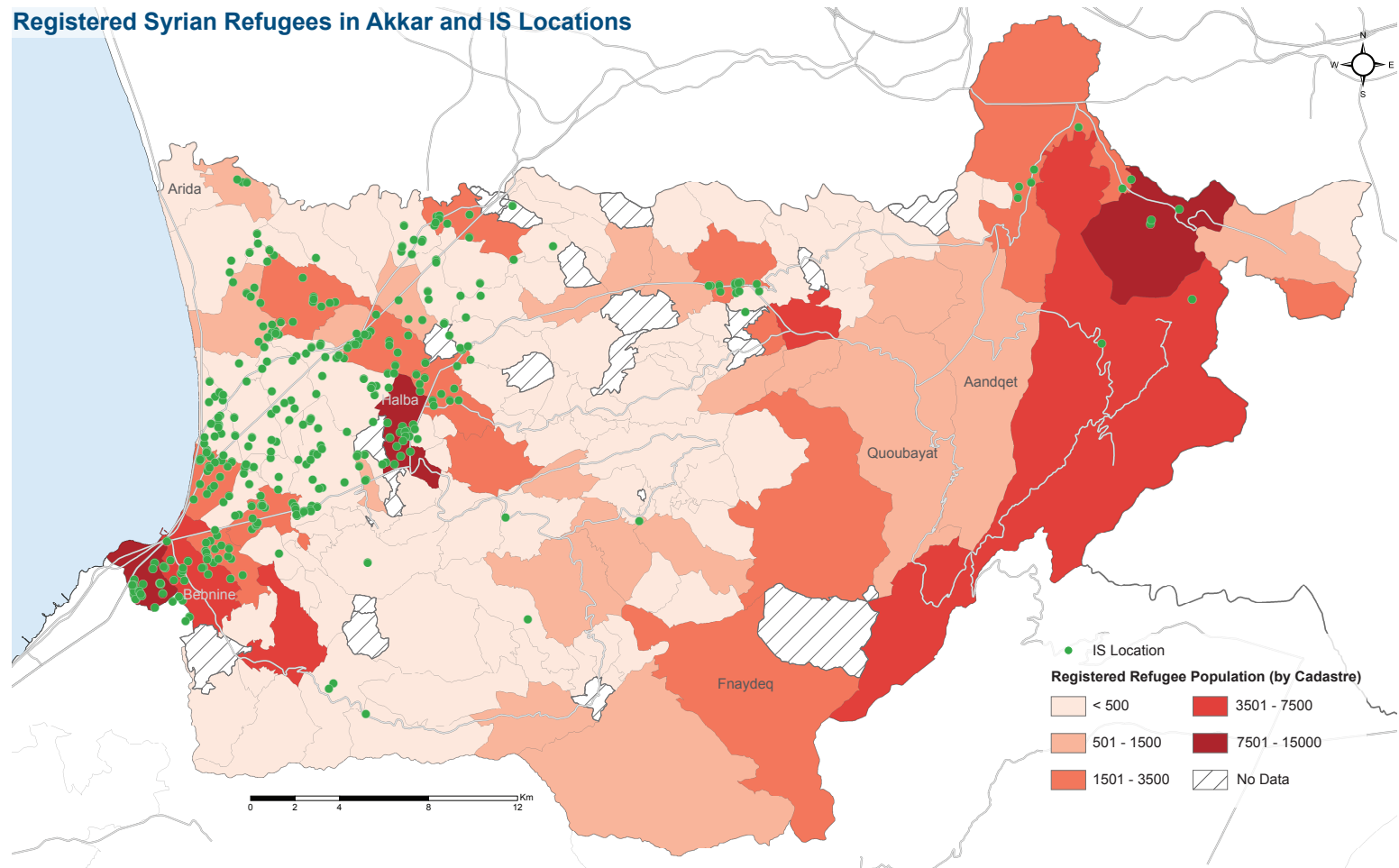


*Note: there were no specific questions concerning the data about basic needs and renting. The Shawish was given the freedom to add any comments/complaints at the end of the survey

IS Density in Akkar



Registered Syrian Refugees in Akkar and IS Locations



REACH began implementing the fourth sweep of IS on August 6, 2014. Using the geographic sweep approach agreed upon by Interagency Mapping Platform (IMAP) partners, REACH identified, geo-referenced, and collected key data on all IS in Akkar over a 9 week period. Data on IS in Akkar is updated on a continuous basis by REACH field teams who collect data on demographics, registration status, settlement leadership, landlords, date of establishment, rental costs, and place of origin.

Data on informal settlements is from the REACH IS Mapping Assessment (4th Sweep) conducted between August and September 2014. Informal settlements (IS) are commonly established on either rented or unauthorized public or private land on the outskirts of population centers, and in many cases lack access to basic utilities and services. Shelters in informal settlements are predominately handmade with a combination of plastic sheeting, timber, and various other materials sourced by displaced persons.