

Lebanon - Akkar Governorate

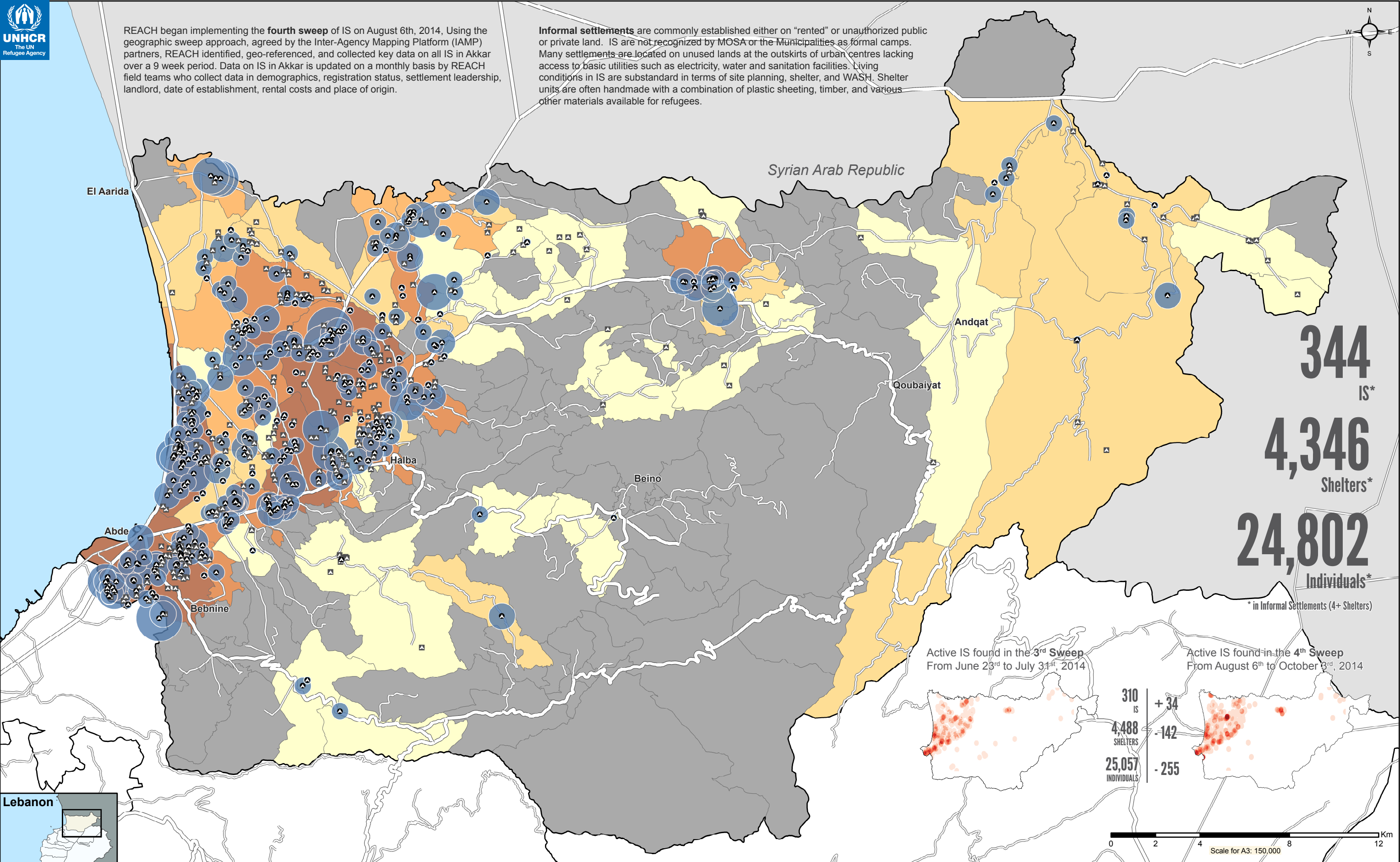
Interagency Mapping Platform: Third and Fourth Sweep IS Analysis

For Humanitarian Use Only
Production Date: 17 November 2014



REACH began implementing the **fourth sweep** of IS on August 6th, 2014. Using the geographic sweep approach, agreed by the Inter-Agency Mapping Platform (IAMP) partners, REACH identified, geo-referenced, and collected key data on all IS in Akkar over a 9 week period. Data on IS in Akkar is updated on a monthly basis by REACH field teams who collect data in demographics, registration status, settlement leadership, landlord, date of establishment, rental costs and place of origin.

Informal settlements are commonly established either on "rented" or unauthorized public or private land. IS are not recognized by MOSA or the Municipalities as formal camps. Many settlements are located on unused lands at the outskirts of urban centres lacking access to basic utilities such as electricity, water and sanitation facilities. Living conditions in IS are substandard in terms of site planning, shelter, and WASH. Shelter units are often handmade with a combination of plastic sheeting, timber, and various other materials available for refugees.



344 IS*
4,346 Shelters*
24,802 Individuals*
* in Informal Settlements (4+ Shelters)

Active IS found in the **3rd Sweep**
From June 23rd to July 31st, 2014

Active IS found in the **4th Sweep**
From August 6th to October 3rd, 2014

310 IS
4,488 SHELTERS
25,057 INDIVIDUALS

+ 34
- 142
- 255

Active Informal Settlements (IS)
Identified during the 4th Sweep

- IS with 4 shelters or more
- IS with less than 4 shelters

Number of Individuals living in IS per cadastre

- 4 - 100
- 101 - 400
- 401 - 700
- 701 - 1100
- 1101 - 2005
- No IS in cadastre

Number of Individuals living in IS

- 503 - 1043
- 201 - 502
- 87 - 200
- 34 - 86
- 1 - 33

- Major road
- Other road

Data Sources:
- Administrative boundaries: GADM, OSM
- REACH IS 4th sweep: August, September 2014

Coordinate System: WGS84
File: REACH_LBN_Map_AkkarGovernorate_4ThSweepAnalysis_17Nov2014_A3
Contact: reach.mapping@impact-initiatives.org
Note: Data, designations and boundaries contained on this map are not warranted to be error-free and do not imply acceptance by the REACH partners, associated, donors mentioned on this map.

REACH
An initiative of
IMPACT Initiatives
ACTED and UNOSAT