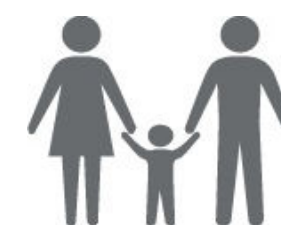


SYRIA REFUGEE RESPONSE

LEBANON North Governorate, Tripoli, Batroun, Bcharreh, El Koura, El Minieh-Dennieh, Zgharta Districts (T+5)

Distribution of the Registered Syrian Refugees at the Cadastral Level

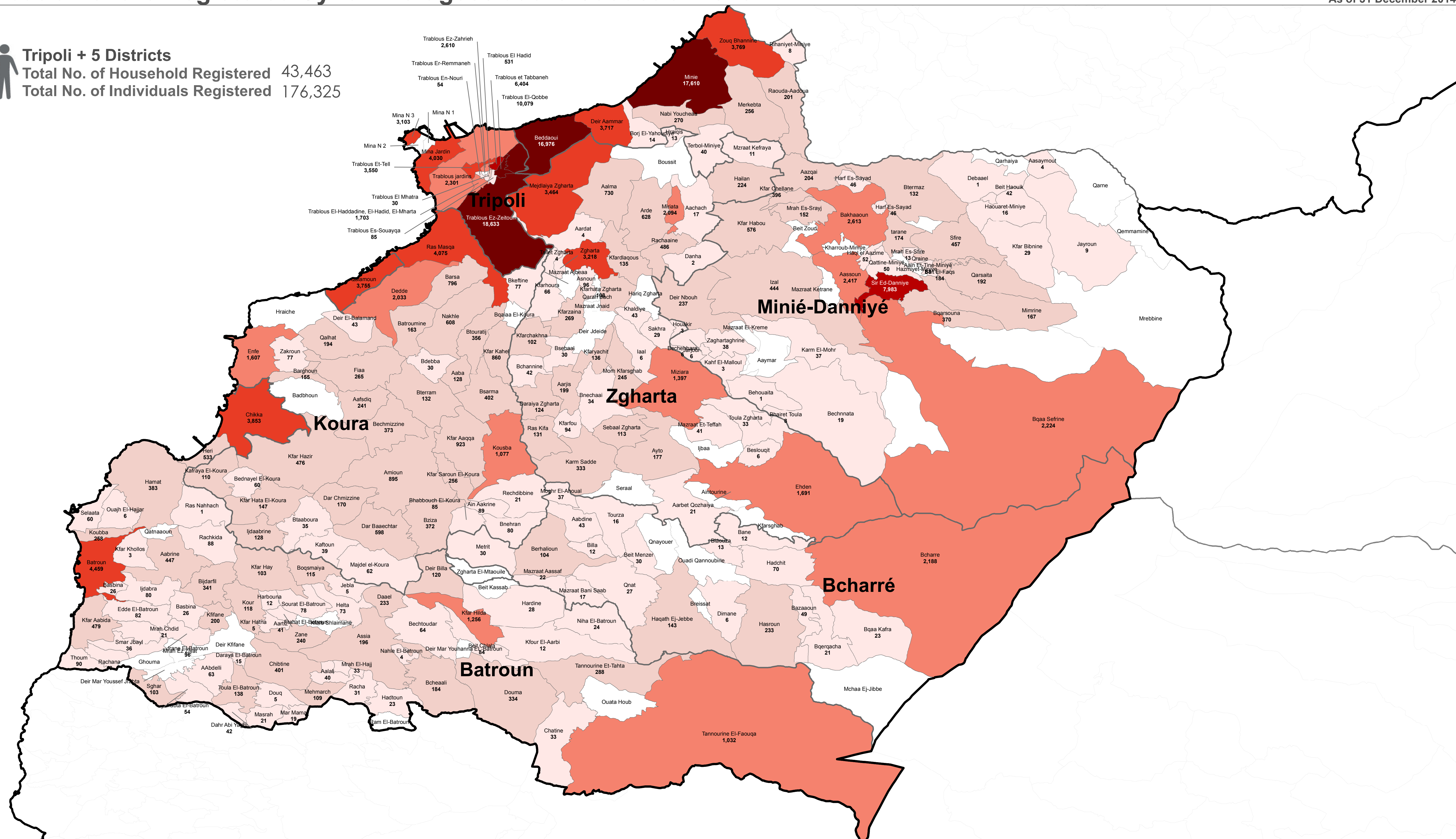
As of 31 December 2014



Tripoli + 5 Districts

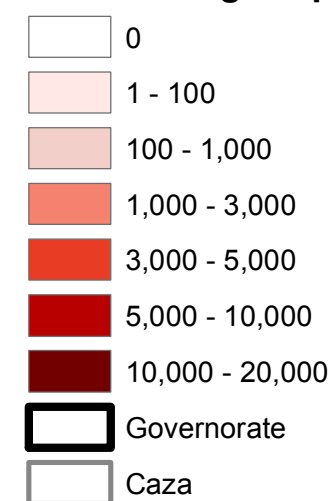
Total No. of Household Registered 43,463

Total No. of Individuals Registered 176,325



Legend

No. of Refugees per Cadastral



Notes

The boundaries, names and designations used on this map do not imply official endorsement of the United Nations. All data used are the best available at the time of map production.

Data Sources:

- Lebanese Border, Caza and Cadastral Boundaries: NPMPLT 2005.
- Geographic Projection WGS 1984

Registered Refugees Figures by UNHCR As of 31 December 2014.

For more information contact Rana G. Ksafi at ksafi@unhcr.org

GIS and Mapping by UNHCR. For Information and updates

contact Jad Ghosn: ghosn@unhcr.org

Maroun Sader: sader@unhcr.org

NPMPLT: National Physical Master Plan for the Lebanese Territory

The No. indicates the registered refugees at the cadastral level



LOCATION DIAGRAM

