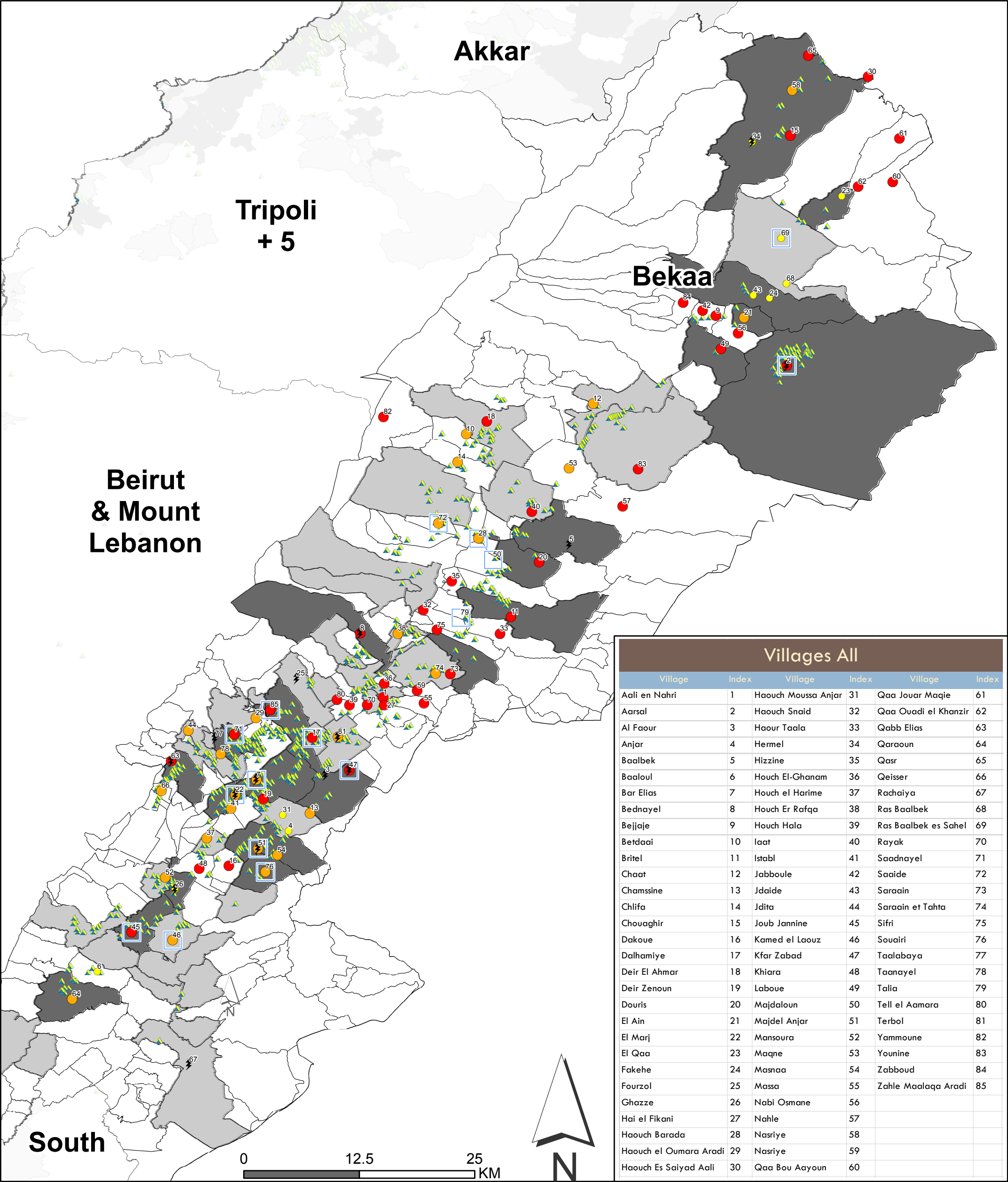




Bekaa

Date: 7/3/2014



Villages All					
Village	Index	Village	Index	Village	Index
Aali en Nahri	1	Haouch Moussa Anjar	31	Qaa Jouar Maqie	61
Aarsal	2	Haouch Snaid	32	Qaa Ouadi el Khanzir	62
Al Faour	3	Haour Taala	33	Qabb Elias	63
Anjar	4	Hermel	34	Qaraoun	64
Baalbek	5	Hizzine	35	Qasr	65
Baaloul	6	Houch El-Ghanam	36	Qeisser	66
Bar Elias	7	Houch el Harime	37	Rachaiya	67
Bednayel	8	Houch Er Rafqa	38	Ras Baalbek	68
Bejjaje	9	Houch Hala	39	Ras Baalbek es Sahel	69
Betdaai	10	Iaat	40	Rayak	70
Britel	11	Istabl	41	Saadnayel	71
Chaat	12	Jabboule	42	Saaide	72
Chamssine	13	Jdaide	43	Saraain	73
Chlifa	14	Jdita	44	Saraain et Tahta	74
Chouaghir	15	Joub Jannine	45	Sifri	75
Dakoue	16	Kamed el Laouz	46	Souairi	76
Dalhmiye	17	Kfar Zabad	47	Taalabaya	77
Deir El Ahmar	18	Khiara	48	Taanayel	78
Deir Zenoun	19	Laboue	49	Talia	79
Douris	20	Majdaloun	50	Tell el Aamara	80
El Ain	21	Majdel Anjar	51	Terbol	81
El Marj	22	Mansoura	52	Yammoune	82
El Qaa	23	Maqne	53	Younine	83
Fakehe	24	Masnaa	54	Zabboud	84
Fourzol	25	Massa	55	Zahle Maalaga Aradi	85
Ghazze	26	Nabi Osmane	56		
Hai el Fikani	27	Nahle	57		
Haouch Barada	28	Nasriye	58		
Haouch el Oumara Aradi	29	Nasriye	59		
Haouch Es Saiyad Aali	30	Qaa Bou Aayoun	60		

Level of Risk

High

Medium

Low

Informal Settlements

Social Tension

WASH Health Referrals

Most Vulnerable

Most and 2nd most Vulnerable

3rd, 4th, 5th Most Vulnerable

Overview:
This map shows those villages in the Bekaa area facing water scarcity. Villages have been divided into rankings of high medium and low. The place names have been signified with an index value and the associated table can be used to find the specific name.