



Inter-Agency
Coordination
Lebanon

SUPPORT TO LEBANESE PUBLIC INSTITUTIONS

Under the Lebanon Crisis Response Plan 2015



"I can get to my land faster now, I've been waiting for this road for so long."
Michel Bchara, a farmer from Mansoura, Bekaa



Figure 1 - Support to Municipal Services - Agricultural Roads - Newly constructed agriculture roads in Mansoura, making it easier for farmers to get their lands.
Photo credits: UNDP



Figure 2 - Final touches on the construction of the 500 cubic meter water tank in Kham, South Lebanon.
Photo credits: UNDP

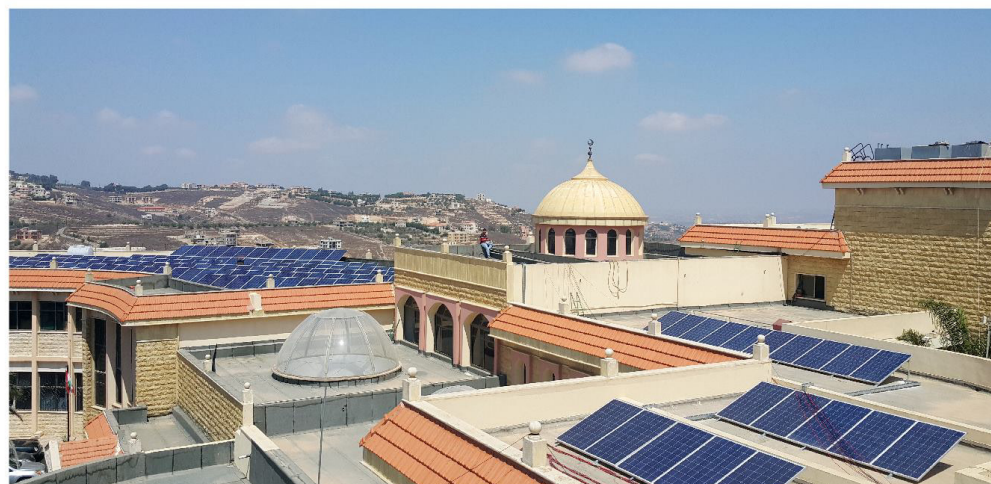


Figure 3 - Installation of a 116 KWp Hybrid - PV Diesel system in South Lebanon Amal Education Institute- Tahrir Square- Sultaniyeh. Photo credits: UNDP



TABLE OF CONTENTS

2	OVERVIEW OF THE SUPPORT TO LEBANESE PUBLIC INSTITUTIONS
8	SOCIAL INSTITUTIONS
10	EDUCATION INSTITUTIONS
14	SUPPORT TO PUBLIC SERVICE DELIVERY <ul style="list-style-type: none">• ENERGY AND WATER INSTITUTIONS• MUNICIPALITIES AND UNIONS OF MUNICIPALITIES
18	HEALTH INSTITUTIONS
20	AGRICULTURAL INSTITUTIONS
22	OTHER PUBLIC INSTITUTIONS

Support to Public Institutions under the LCRP

Five years of conflict in Syria have resulted in a massive influx of refugees into Lebanon placing an enormous pressure on the country and its people. Hosting a large, increasingly poor, refugee community has continued to test the limits of infrastructure and public services that were already fragile before the crisis.

Lebanon currently hosts the largest number of refugees per capita in the world, with approximately 1.1 million Syrian refugees registered with UNHCR (representing over 25 percent of the Lebanese population). The spillover effects of the Syrian conflict are not only impacting Lebanon's economy with cumulative losses estimated at 7.5b USD by end-2014 according to the World Bank, but are also challenging the entire country's socio-economic infrastructure and institutional stability.¹

The sudden and large increase in population is putting public institutions under extreme pressure to deliver basic services to an increasingly high number of vulnerable people, in a context of shrinking national resources. As a result, the access to and quality of basic services have significantly declined for the past few years and no less than USD 2.5 billion would be required to reinstate public services to their pre-Syrian conflict level.²

Protracted displacement represents a major development challenge for host communities because its costs and dynamics are not transitory, but have a long-lasting impact. A traditional approach focusing exclusively on humanitarian assistance to refugees fails to increase self-reliance within the host communities and to strengthen national systems. A more comprehensive development-humanitarian framework is therefore required to help mitigate some of the consequences of a protracted crisis and make long-term recovery easier to achieve through innovative development planning.

In order to address this challenge, the Lebanon Crisis Response Plan (LCRP), a comprehensive and integrated strategy addressing long-term poverty and social tensions was elaborated by the Government of Lebanon with the support of its national and international partners. The LCRP delivers integrated and mutually reinforcing humanitarian and stabilization interventions to mitigate the negative impacts of the Syria crisis. Its emergency-response dimensions are integrated into a broader plan to support Lebanon's stabilization by reinforcing the institutional capacities of national and local authorities. As a result, the strategic objectives 2 and 3 of the LCRP focus respectively on strengthening the capacity of national and local service delivery systems and on enhancing Lebanon's economic, social, environmental and institutional stability.

Under the scope of this innovative and ambitious plan, more than 171.5 million USD was channeled to public institutions in 2015 in order to support service delivery, institutional capacity building and enhance societal resilience & stability. This shows a significant increase from similar programming in 2014 which totaled 77.9 million USD, also marking a qualitative shift in the approach with stronger focus on building national capacities and institutional stability across all sectors.

The present brochure provides a detailed overview of the technical, operational, financial and staffing support provided to Lebanese public institutions by LCRP partners.

\$ 61.3 million

TO ASSIST THE MINISTRY OF EDUCATION AND HIGHER EDUCATION IN ITS REACHING ALL CHILDREN WITH EDUCATION (RACE) PLAN, TO PROVIDE SUPPLIES AND EQUIPMENT, COVER ENROLLMENT FEES AND TO REHABILITATE SCHOOLS.

\$ 23.9 million

TO THE MINISTRY OF PUBLIC HEALTH TO STRENGTHEN THE PUBLIC HEALTH SYSTEM, THROUGH PROVISION OF EQUIPMENT AND SUPPLIES AND REHABILITATION OF HEALTH FACILITIES, TRAINING OF HEALTH CARE PROVIDERS AND STAFFING SUPPORT.

\$ 61.5 million

TO SUPPORT THE MINISTRY OF ENERGY AND WATER, WATER ESTABLISHMENTS AND MUNICIPALITIES TO ENHANCE SERVICE DELIVERY AND INFRASTRUCTURE.

\$ 9.7 million

TO STRENGTHEN THE CAPACITY OF THE MINISTRY OF SOCIAL AFFAIRS, INCLUDING THE SOCIAL DEVELOPMENT CENTRES, TO COORDINATE AND RESPOND TO THE CRISIS, INCLUDING PROVIDING COMMUNITY OUTREACH SERVICES.

\$ 4 million

TO SUPPORT THE MINISTRY OF AGRICULTURE FOR LIVESTOCK VACCINATION, FOOD SAFETY, INFORMATION MANAGEMENT, PLANT PRODUCTION AND PINE PRODUCTION MANAGEMENT.

\$ 1.2 million

TO THE PRESIDENCY OF THE COUNCIL OF MINISTERS, GOVERNORS OFFICES AND SECURITY FORCES TO ENHANCE DISASTER RISK MANAGEMENT, CRISIS PREVENTION AND SECURITY.

¹ "Lebanon : Promoting Poverty Reduction and Shared Prosperity - A Systematic Country Diagnostic, 15 June 2015, World Bank"

² ibid



Summary of findings - support to Lebanese Public Institutions through the LCRP in 2015

The Lebanon Crisis Response Plan (LCRP) was launched in December 2014 to outline the Government of Lebanon and the International Community joint strategy to respond to the consequences of the Syria Crisis. The Plan placed a particular emphasis on the need to strengthen and reinforce national systems. The dramatic socio-economic and demographic impact of the surge in population has strained public services and infrastructure that were already fragile before the Syria crisis. Two of the three overall strategic objectives of the LCRP therefore explicitly mention the need to increase support to public institutions and systems. Strategic Objective number two focuses on enhancing the capacity of national and local service delivery systems whilst the third objective focuses on reinforcing Lebanon's institutional stability.

As a result of the recognition of the protracted nature of the crisis and limited capacity of national structures and institutions, one key aim of the LCRP in 2015 was to build on the achievements of the successive regional Refugee Response Plans (2012 – 2014) to channel an increasing proportion of the assistance to and through public institutions. This document provides an overview of the results achieved in 2015 by LCRP partners, including the Government of Lebanon, UN Agencies, NGOs and donors to strengthen public institutions.

Under the scope of the LCRP, more than 171.5 million USD was channeled to public institutions in order to provide assistance to vulnerable Lebanese, Syrian and Palestine refugees. Investments were made to support service delivery, capacity building of public officials and civil servants as well as policy development. Efforts to mitigate the pressure placed on local communities also accelerated, reducing the impact of the refugee presence and preventing tensions between populations.

Overall, the technical, operational and financial assistance provided in 2015 to public institutions addressed challenges and priorities across all sectors within the crisis response and enabled the support of 896 additional staff members to public institutions.

The Ministry of Social Affairs (MoSA) along with its Social Development Centres (SDCs) were supported to both lead the response and provide social services to the most vulnerable. An estimated 10 million USD in financial support was therefore mobilized to strengthen Lebanon's social system, in addition to 7.9m USD targeting specifically the implementation of the National Poverty Targeting Programme (NPTP). The former notably provided staffing support to 57 SDCs across the country under MoSA's National plan for Women and Children while the latter enabled the provision of monthly food assistance to 27,208 poor Lebanese.

The bulk of the support to public institutions in 2015 (61.3m USD in total) went to the public education system through

the Ministry of Education and Higher Education (MEHE) and local schools. Through the implementation of MEHE's Reach All Children with Education (RACE) plan, 354,000 Syrian and Lebanese children enrolled in formal public education across the country and 96 public schools were rehabilitated and/or equipped.

In the health sector, more than 23m USD was injected to the Ministry of Public Health (MoPH), hospitals and health care centres across the country. As a result, more than 196 Primary Health Care centers (PHCs) were supported to better address the needs of the most vulnerable communities. In addition, 8 governmental hospitals were equipped with isolation rooms for outbreak containment and/or water laboratories to prevent infectious disease outbreaks while 8 others were set up with emergency obstetric and neonatal intensive care medical equipment.

Significant efforts were made to enhance basic service delivery at the local level and to strengthen the country's infrastructure, notably in the water and energy sector, totaling over 60m USD of support. This includes support to the Ministry of Energy and Water (MoEW), municipalities and Water Establishments' delivery of basic services. Overall, 48m USD was invested in projects supporting Lebanon's 4 Water Establishments. 11 Union of Municipalities and 244 Municipalities are also receiving capacity building support to respond to the increased demand and pressure on services (104 more than in 2014).

In terms of enhancing local service delivery, 157 municipalities were directly supported with 8.5m USD invested in 156 tangible interventions such as construction of public spaces, sports and recreational infrastructures, equipment of local facilities, distribution of garbage bins or rehabilitation of water networks and sources (50% more than at the same time last year, with 71 more projects to be completed in 2016). 89 municipalities were also supported through labour-intensive projects to perform small-scale infrastructure rehabilitation and cleaning services.

Food security partners supported the Ministry of Agriculture (MoA) in the areas of livestock vaccination, food safety procedures, agricultural statistics and information system, plant production and pine production management. Overall, 4m USD was injected to MoA and 800,000 animals were vaccinated in 2015 to prevent the spread of diseases and efficiently increase livestock production.

Other major institutions were also supported under the LCRP including the Prime Minister's Office, community development centres, governors' offices and security forces with a view to enhance disaster risk management, information management and coordination as well as the development of standard operating procedures (SOPs) and codes of conduct in crisis response.

In 2015, more than 171.5 million USD of assistance was channeled to public institutions. 896 additional staff were provided to them to enhance their crisis response capacities within the LCRP.

The support to public institutions in 2015 used national systems to provide assistance to refugees, but was primarily focused on supporting service delivery, enhancing capacities of public officials and civil servants, as well as policy development.



more than 171.5m USD
of assistance was channeled to public institutions.



896 additional staff
were provided to enhance their crisis response capacities within the LCRP.

Highlights of support provided in 2015 include:

- 27,208 Lebanese benefitting from monthly food assistance through the NPTP throughout the year.
- 57 Social Development Centres supported to implement MoSA's National Plan for Women and Children.
- 96 public schools rehabilitated and equipped.
- 180 Primary Health Centres and 8 Government hospitals equipped.
- 56m USD invested in service delivery, primarily in water and waste water projects.
- 244 Municipalities and 11 Unions received capacity building support to improve service delivery and management of the crisis at the local level with 157 municipalities benefitting from municipal services projects.

Support to MoSA, National Poverty Targeting Programme (NPTP) and Social Development Centres (SDCs)
3.9m USD in support to MoSA, 7.9m USD support to the NPTP and 5.8m USD to SDCs with 655 additional staff provided.



3.9m USD in support to MoSA
5.8m USD to SDCs
7.9m USD support to NPTP



655 additional staff provided

- 27,208 Lebanese benefited from monthly food assistance through NPTP throughout the year.
- 258 MoSA staff members trained on distribution, monitoring and evaluation of food assistance to NPTP beneficiaries.
- 57 SDCs supported through financial, technical, and additional staffing to implement MoSA's National Plan for Women and Children.

Support to the public education system through MEHE and public schools
1.6m USD in support to MEHE, 59.7m USD in support to public schools, with 31 staff supported.



1.6m USD in support to MEHE
59.7m USD in support to public schools



31 staff supported

- 31 staff at MEHE supported to implement the Reaching all Children in Education in Lebanon (RACE) Plan.
- 390 staff of the Department of Orientation and Guidance staff trained on learning methodologies.
- 96 public schools rehabilitated and equipped.
- 400 Accelerated Learning Programme teachers trained.
- 30,933 Lebanese children supported to access formal education.
- 234,000 Lebanese, Syrian and Palestinian children enrolled in formal basic education provided with learning materials.

Support to the Ministry of Agriculture

4mUSD in support to the Ministry of Agriculture for livestock vaccination, food safety procedure, development of MoA statistics and information system, plant production and pine production management.



4mUSD in support to the Ministry of Agriculture

Support to the public health system through the MoPH, Primary Health Care (PHC) Centres and government hospitals. 1.2m USD in support to MoPH, 22.7m USD in support to Health Centres, with a total of 138 additional staff supported.



1.2m USD in support to MoPH
22.7m USD in support to Health Centres



138 additional staff
 supported

- 54 PHC centres have been renovated and 180 were provided with improved IT and medical equipment, including ultrasound machines and cold chain equipment. 80 centres received additional reproductive health equipment which enabled a 40% increase in the utilization of health services, representing around 400,000 patients.
- At 8 governmental hospitals, water testing laboratories have been renovated and equipped, emergency obstetrics and neonatal intensive care units have been set up and 5 governmental hospitals have been provided with pressure rooms. In addition, 26 government hospitals have been supplied with medical equipment and lifesaving drugs.
- 91 health personnel have continued to be supported within MoPH facilities since 2014 to ensure that services are more accessible. 2530 healthcare providers were trained at PHC level.
- A national Early Warning and Response System (EWARS) for outbreaks was established at the MoPH.
- The national capacity for Response to Hazards (CBRN) was reinforced through the provision of personal protective equipment (PPE) to health workers along with the establishment of a multidisciplinary HAZMAT team.
- Support to integrated healthcare system in 29 municipalities, involving 15 SDCs (53 staff trained), 12 Primary Health Centres (47 staff trained), 72 schools (131 staff trained)

Support to the Ministry of Energy and Water (MoEW), and to Municipalities and Water Establishments for local service delivery

61.5mUSD in support to municipalities and Unions and to MoEW and Water Establishments for service delivery and infrastructure, with 55 additional staff in Municipalities and Unions and 17 staff in MoEW and Water Establishments supported.



61.5m USD in support to
 municipalities and Unions and to MoEW and
 Water Establishments for service delivery and
 infrastructure



55 additional staff
 in municipalities and Unions
17 staff in MoEW and Water
 Establishments supported

- 48m USD invested in projects supporting Lebanon's Water Establishments and more than 13m USD injected into municipalities and Unions.
- 11 Union of municipalities and 244 Municipalities received capacity building support to respond to increased demand and pressure on services, 104 more than in 2014.
- 157 municipalities receiving assistance to deliver services:
 - 7.5mUSD invested in 140 tangible municipal projects – a 50% increase from last year, with another 71 projects worth 9.2mUSD ongoing and to be completed in 2016.
 - 89 municipalities supported through labour-intensive projects to perform small-scale infrastructure rehabilitation and cleaning services.

Support to the Presidency of the Council of Ministers (PCM), Council for Development and Reconstruction (CDR), Ministry of Interior and Municipalities (MoIM), Governors Offices and Security Forces
3.2mUSD in support to various institutions and 12 additional staff provided, notably:



3.2m USD
 in support to various institutions



12 additional staff
 provided

- Support to PCM for disaster risk management, including a national operation room and operation room equipment in 7 Ministries, 5 Governors' Offices, Beirut Airport and the National Council for Scientific Research (CNRS) to enhance risk assessments.
- Support to the High Relief Commission in the coordination of assistance to Lebanese Returnees.
- Support to CDR in information management and coordination.
- Support to the Central Administration of Statistics (CAS) in the design and implementation of surveys.
- Support to GSO in border regulation, equipment registration centres.
- Support to 4 Governors' Offices, including staffing support for planning and coordination.
- Support to MoIM to institutionalize municipal police forces through development of codes of conduct and SOPs.



Support to Social Institutions

Support to the Ministry of Social Affairs

The Ministry of Social Affairs (MoSA) is responsible for leading the response to the Syria crisis which is currently affecting Lebanon. In view of this challenging role, MoSA has had the full support of the international community within the regional response.

The assistance provided to MoSA in 2015 covered all its areas of intervention as defined in the LCRP and included staff provision, capacity building, support to service delivery and policy development. As a result, the Ministry of Social Affairs significantly strengthened its capacity to lead and coordinate the response, reinforced its regulatory role and improved the delivery of health and social services through its extended network of SDCs.

Overall, 655 staff were seconded to MoSA and its SDCs to enhance the quality of services at the central and local levels, along with a 10 million USD contribution (of which 3.9m USD specifically targeted the Ministry of Social Affairs). In addition, 7.9 m USD in financial support was injected to facilitate the implementation of the National Poverty Targeting Programme (NPTP), a government strategy aimed at improving the delivery of social services to enhance the living conditions of vulnerable Lebanese.

Trainings were provided to 616 MoSA social workers and SDCs' staff which focused primarily on the general improvement of the quality of health and protection services. Overall, 258 MoSA staff members were specifically trained on the distribution, monitoring and evaluation of food assistance to NPTP beneficiaries while technical trainings were conducted to improve complex protection case management, the identification and referral of child protection cases (both judicial and non-judicial) and the implementation of national SOPs.

MoSA being actively involved in the provision of health services, its staff received acute medication (as per the MoPH drug list), vaccines, vaccines supplies, cold chain and medical equipment both at the central and local levels to provide better access to healthcare services to the most vulnerable communities across Lebanon.



Figure 4 - Training of MOSA staff on distribution, monitoring and evaluation of food assistance to NPTP beneficiaries. Photo credits: WFP

Support to Social Development Centers

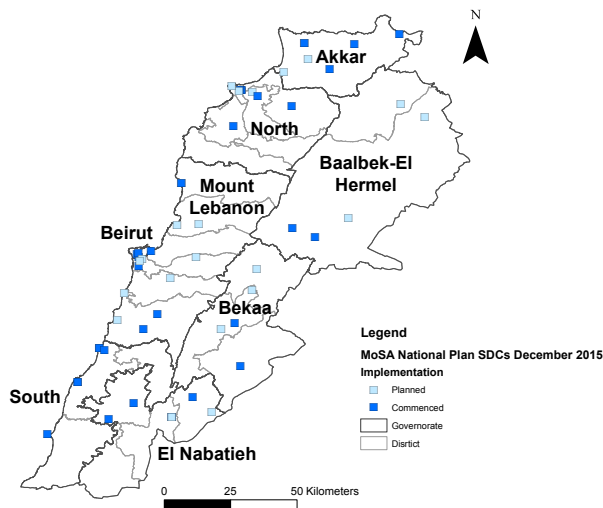
With the support of humanitarian partners, Social Development Centres (SDCs) extended and enhanced the quality and scope of the services provided to hosting and refugee communities at the local level. Overall, 5.8 m USD was injected to SDCs, along with the provision of staff.

Under MoSA's National Plan to Safeguard Children and Women in Lebanon, 57 SDCs located in 8 Governorates received technical, financial and human resources assistance in 2015. The support provided by partners covered the salary of health care workers, the provision of essential medication and vaccines and the rehabilitation and/or equipment of SDCs with cold chain systems, vaccine carriers and dental materials and equipment.

In parallel, efforts were made under the plan to enhance the national child protection and GBV systems and to reinforce MoSA's regulatory role. As a result, the national regulatory framework was aligned with international standard guidelines, notably through the endorsement of National SOPs on case management and alternative care guidelines. The adoption of minimum standards for interim care also contributed to strengthening the coordination and delivery of protection services to ensure greater effectiveness and efficiency in the response.

Currently, 28 SDCs offer enhanced daycare and caregiver services across Lebanon and 56 SDCs provide psycho-social support. Among these, 36 SDCs offer comprehensive SGBV prevention and response services while 32 SDCs provide child protection services (including case management). As a result, 426,976 people (including 268,178 children) received access to information on Child Protection/ GBV issues, services and referral pathways in 2015. 128,638 people (94,595 children and 34,043 caregivers) benefited from psychosocial support services and 141,165 individuals (mainly women and girls) accessed safe spaces to prevent and respond to SGBV across Lebanon.

Given the fundamental role they play as frontline responders, SDCs were also strongly engaged in awareness-raising, hygiene promotion and acute watery diarrhea preparedness and response trainings with the support of health partners. A number of activities were organized at the local level, including theatre school plays, world-water day and hand-washing day events targeting Syrian refugees and host communities aimed at decreasing waterborne diseases and at improving water management.



KEY NUMBERS:

\$ 9.7 M

IN SUPPORT TO MOSA AND SDCs

\$ 7.9 M

IN SUPPORT TO NPTP

57

SDCS SUPPORTED THROUGH FINANCIAL, TECHNICAL AND STAFFING

655

STAFF SECONDED TO MOSA AND SDCS

616

MOSA SOCIAL WORKERS AND SDCs STAFF TRAINED

27,208

LEBANESE BENEFITTING OF MONTHLY FOOD ASSISTANCE THROUGH NPTP

2016 NEXT STEPS

The response will continue reinforcing national social systems in 2016. 29.5m USD dedicated to institutional strengthening were requested by protection, child protection and SGBV partners for 2016. An additional 47.1m USD will go directly to further strengthening the MoSA-led NPTP and national safety nets. The scaling up of the NPTP for vulnerable Lebanese is expected to improve the living conditions of 20,000 Lebanese households who were pushed deeper into poverty by the Syrian crisis.

Interventions will continue to expand to other selected SDCs, beyond the 57 currently supported under the umbrella of the MoSA National Plan, with the objective to sustain and enhance the provision of service delivery at both the central and local levels.

To further this objective, the MoSA-led Lebanon Host Communities Support Project (LHSP) which provides an integrated response to enhance resilience and stability in vulnerable municipalities, will be scaled up in order to improve service delivery in the localities facing the greatest increases in population, pressure on public systems and poverty as a result of the crisis.

Partners will focus on ensuring the full respect for the rights of the individual, in accordance with national and international standards. This critical objective will be attained notably through the strengthening, as per the 2015 strategy, of existing national systems to respond to the needs of those who are the most affected by the crisis, primarily vulnerable Lebanese and displaced Syrians. Support will include staffing, capacity-building, equipment provision and policy development and targets up to 1,862,000 people in 2016.

Overall, 120,000 displaced Syrians and vulnerable Lebanese at risk will benefit from quality response services and 186,000 children and 215,470 caregivers from psycho-social support programmes. SDCs and local organizations will be assisted throughout the year within the 251 most vulnerable cadasters and 4,000 service providers and frontline workers will benefit from capacity-building initiatives in order to enhance social services delivery.

Finally, MoSA will continue to be supported as the lead ministry in charge of overseeing the government response to the crisis in Lebanon. In fact, in addition to the Inter-Sector working group, MoSA leads five of the nine LCRP sectors. Activities are expected to scale up following the recent success of the London Conference on supporting Syria, which mobilized pledges amounting to US\$ 5.9 bn for 2016 and US\$ 5.4 bn for 2017-2020, the highest amount ever committed in response to one crisis.

Therefore, it will be fundamental to provide sustained institutional/policy development support to the Ministry to ensure that the LCRP reaches its ambitious objectives in 2016.



Support to Education Institutions

Support to the Ministry of Education and Higher Education

Characterized by a strong government leadership, the education sector has been actively involved in the implementation of the 'Reaching All Children with Education in Lebanon' (RACE) strategy. Aimed at strengthening the national education system in Lebanon, RACE focuses on providing opportunities for all children affected by the Syria crisis to access education and to benefit from better learning spaces, equipment, teaching and learning materials in public schools. The plan, which was endorsed by the Lebanese authorities in June 2014, also foresees the improvement of the oversight and support system benefiting teachers.

RACE provides an efficient framework for collaboration both in terms of immediate humanitarian assistance and long-term institutional support and offers a comprehensive and integrated response to the educational needs of the most vulnerable communities that is both fully aligned with MEHE's priorities and implemented through national systems.

Under the scope of this ambitious plan, the Ministry of Education and Higher Education (MEHE) has been supported by education partners throughout 2015 to provide access to quality education for all children and to strengthen national education systems. More than 61 million USD was channeled to the public education system, of which 1.6 m USD specifically targeted the Ministry and 59.7 m USD supported public schools and students' enrollment.

In 2015, 24 staff were supported within the Planning Management Unit (PMU) of the Ministry of Education and Higher Education and 7 additional staff were deployed at the central level. This staffing support was complemented by the provision of IT equipment to equip all the Ministry's regional offices and schools.

At a technical level, education partners assisted MEHE in the design of education programmes, guidelines and on policy development initiatives. They advocated for the need to diversify learning pathways, thus supporting the Ministry's efforts towards the development of a Non-Formal Education (NFE) Policy Framework that will guide the implementation of non-formal education programmes. Technical support was also provided to the Centre of Education Research and Development (CERD) with the elaboration and design of the Accelerated Learning Programme (ALP) curriculum and textbooks while the Directorate of Higher Education was supported in the scaling up of its response to the

crisis (including through the provision of higher education opportunities and institutional capacity development targeting universities in the country).

Education partners took part in the training of 390 staff at the Department of Orientation and Guidance (DOPS) on learning methodologies and provided materials on early childhood. DOPS is the department responsible for in-class monitoring, assessment of teachers' performances and provision of guidance to improve teaching methods. Its staff were trained to cover a significantly increased monitoring workload given the additional number of schools (and shifts) in 2015. Additional capacity building support was provided to 100 guidance counsellors, 25 national trainers and 1400 Lebanese public school teachers working in the afternoon shift to help them address the specific needs of Syrian children. With a view to enhance recreational activities, education partners also supported the Scout Department of the Ministry of Education and took part in the training of more than 230 scout chiefs in collaboration with private sponsors. Over 1,000 LEGO boxes were provided to MEHE's Scout and Sports Department alongside manuals to support recreational activities.

Support to public schools

In 2015, public schools were supported by education partners to provide access to quality education for all children. The technical and financial assistance provided by the sector was crucial in a context marked by the strong increase in the number of vulnerable school-aged children enrolling in public schools, estimated to be around 530,000, and the overall lack of resources allocated to them.

In the school year 2014-2015, the two-shift system expanded to 144 schools across Lebanon to accommodate the expanded student body and facilitate access to education. The enrollment fees of school children were covered by humanitarian partners to enable the payment of the salaries of 2nd shift teachers, as well as running and depreciation costs for the schools. In the school year 2015-2016, the number of second shift schools further increased to reach a total of 238 schools. The new schools are located in areas where the numbers of out-of-school Syrian children were the highest. As a result, 354,000 Lebanese, Syrian and Palestinian children enrolled in formal basic education in 2015 and 234,000 received learning materials (including school bags and stationary).

In order to ensure school attendance and retention throughout the scholastic year, 534 public primary schools

received fuel supplies to keep pupils in warm classrooms during the winter months, while 1,300 computers, printers and universal printer supports (UPS) were distributed across the country. For the school year 2015-2016, partners commenced support (based on MEHE's data) to an initial batch of 35 public secondary schools in order to provide them with school stationary and equipment.

In 2015, a total of 96 schools were rehabilitated and equipped according to MEHE's guidelines (medical rooms were furnished in 30 public schools and rehabilitated in 17 public schools). The rehabilitation included the implementation of safety and security measures and the upgrading of toilet blocks, sanitation facilities and medical rooms. It resulted in the enhancement of the schools' infrastructure and contributed to increase the capacity of the public sector to integrate additional children.

In order to enhance the overall quality of education, 400 Accelerated Learning Programme (ALP) teachers were trained on the ALP curriculum and psycho-social support and a separate tailor-made training programme was designed for school leaders and teachers to support 1,500 secondary school-aged students.

In parallel, the improvement of hygiene was targeted as a key priority in a context of overall sanitation and environmental degradation. 1,624 health educators from private and public schools were trained on school-based surveillance and response systems while a pilot recycling programme was launched in seven schools to improve solid waste management.

With a view to reduce social tensions between Lebanese and Syrian children, numerous youth peacebuilding initiatives were supported and 13 violence free schools were established to mitigate the impact of possible inter and intra community conflicts.

KEY NUMBERS:

\$ 61.3m	IN SUPPORT TO MEHE AND PUBLIC SCHOOLS (INCLUDING FOR THE ENROLLMENT OF CHILDREN)
31	MEHE STAFF SUPPLIED TO IMPLEMENT RACE STRATEGY
96	SCHOOLS REHABILITATED AND EQUIPPED
400	ALP TEACHERS TRAINED
30,933	CHILDREN SUPPORTED TO ACCESS FORMAL EDUCATION
234,000	CHILDREN ENROLLED IN FORMAL BASIC EDUCATION PROVIDED WITH LEARNING MATERIALS

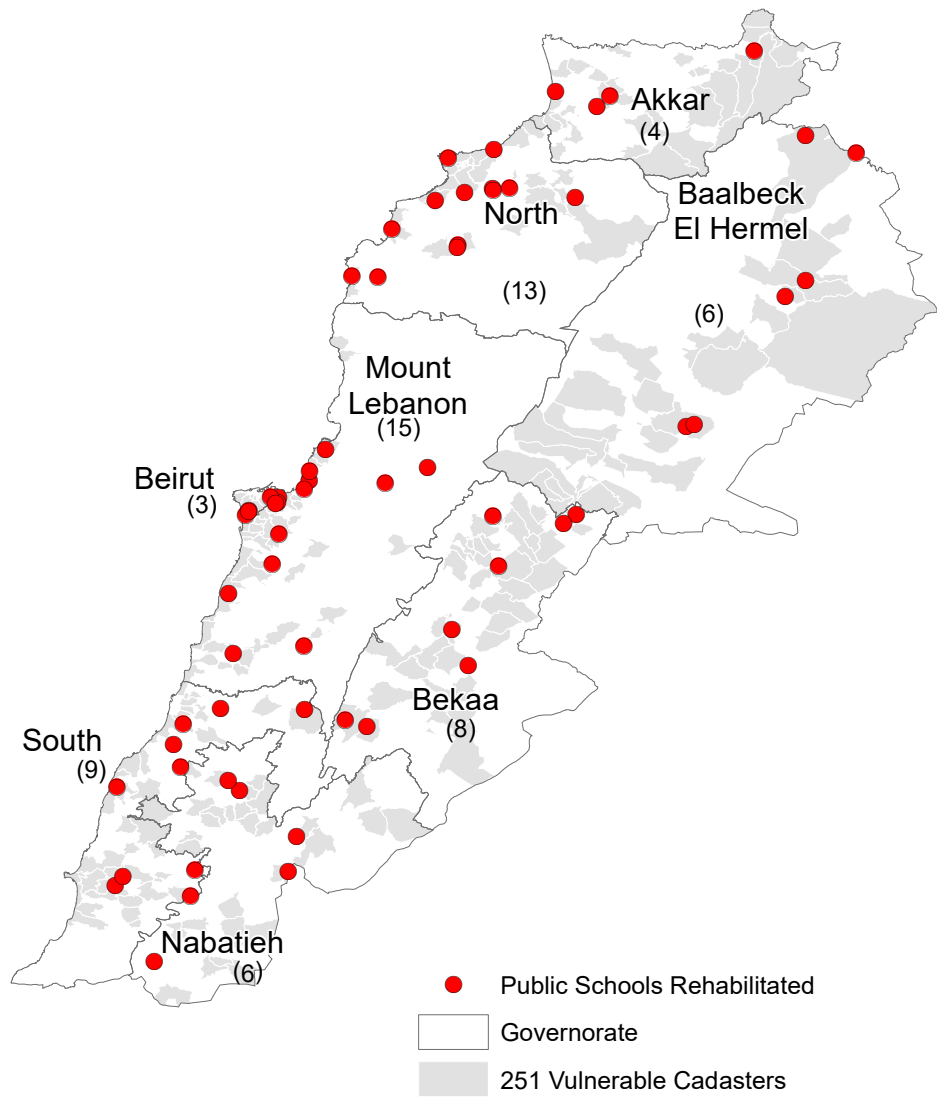


Figure 5 - Violence Free Schools - Lebanese & Syrian children enjoy a celebratory kermes in Haouch En Nabi intermediate public school (Baalbek). Photo credits: UNDP



Figure 6 - Rawdet Fathiya Fatfat school (North). Photo credits: IOCC

Schools Rehabilitated in 2015



SCHOOL
REHABILITATION
HIGHLIGHTS
2015 - 2016



1,300
\$ 1.6 m



96



534
SCHOOLS



238

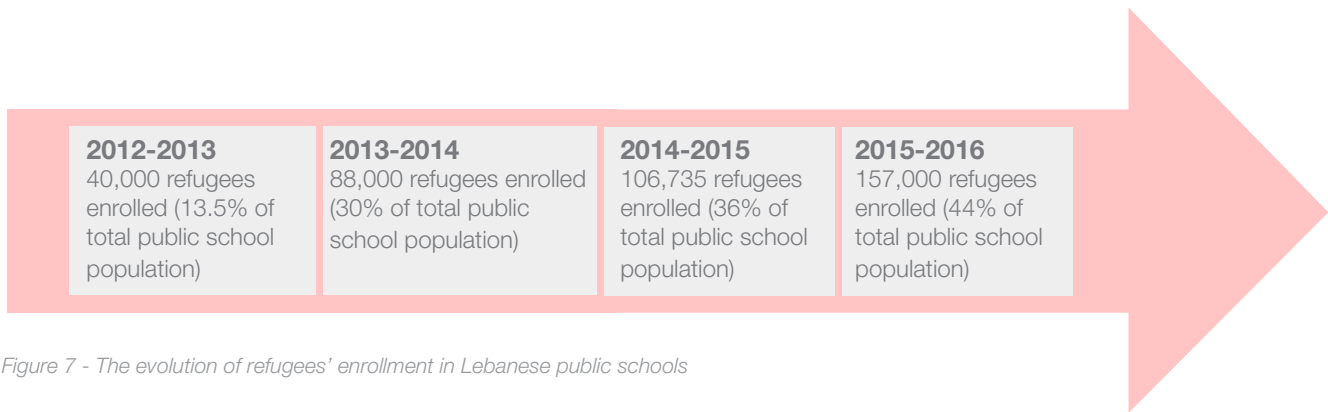


Figure 7 - The evolution of refugees' enrollment in Lebanese public schools

2016 NEXT STEPS

As in 2015, the Reach All Children with Education (RACE) strategy will bring together government and sector partners to provide 370,000 children with formal basic, secondary and technical education and 184,000 children with non-formal education programmes. In parallel, 199,950 children will benefit from retention programmes while 500,000 individuals will be reached through awareness-raising sessions.

In order to enhance the quality of education and ensure equitable access to educational opportunities, sector partners will support MEHE's national plan through the rehabilitation of 600 schools and the provision of 620,530 learning materials to an estimated 391,000 students across the country. School stationary and equipment will be distributed to 100 public secondary schools and 500 school libraries will be established to make reading material easily accessible to Lebanese, Syrian and Palestinian children alike.

On a more technical level, 15,000 teachers, educators and facilitators will be trained to ensure the successful implementation of the RACE strategy and the education system will be strengthened through the deployment and support of 30 additional staff members at MEHE, the training of 300 school administrators and the development of the ALP programme and NFE framework.

The total funding requirement for supporting the education sector reaches 388m USD for 2016. In addition to providing support to formal and informal education, this includes a 21mUSD financial contribution for school rehabilitation and equipment, 15.6m USD for provision of teaching and learning material as well as 5.05m USD for the capacity building of teachers and MEHE staff.

During the London Conference on supporting Syria and the region which was held in February 2016, the Lebanese Government presented a unified plan comprised of an ambitious five-year programme on education, RACE II. This plan, aimed at ensuring that education results are irreversible in Lebanon and that all refugee children aged 5-17 are enrolled in public schools by the end of the 2016/17 school year, is expected to attract important funding from the international community.

RACE II is centered on the six following strategic objectives:

- Scaling up of educational opportunities to ensure that all girls and boys (3-18) have equitable access to the formal public school system;
- Building, expanding, rehabilitating and equipping schools across the country;
- Expanding access to education opportunities for the most vulnerable out-of-school through quality and regulated Non-Formal Education programs;
- Expanding access of youth (15 - 24) to vocational and technical education and training;
- Improving the quality and inclusiveness of the teaching and learning environment, including through curriculum reform;
- Strengthening national education systems, policy, planning, financing and monitoring capacity.

The implementation of this new plan, estimated at 1.75b USD, will maximize the effectiveness and sustainability of the education system in Lebanon in order to improve the quality of teaching and learning, ensure equitable access to educational opportunities and strengthen national education systems, policies and monitoring.



Support to public services delivery

Support to Energy and Water Institutions

Support to the Ministry of Energy and Water, Water Establishments and national agencies

The infrastructures and services related to energy and water were already weak in Lebanon prior to the Syria crisis and characterized by structural deficiencies and poor overall management. Since 2011, this challenging situation has been exacerbated by the massive influx of refugees from Syria, putting additional pressure on an already fragile system.

Benefiting from the increased financial and technical support of its partners, the Ministry of Energy and Water (MoEW) reinforced its leadership in 2015 and received, along with national agencies, the technical advisory support of 17 additional experts. These experts played a significant role in the critical areas of renewable energy, water conservation and management and were more specifically involved in the implementation of two key strategies, namely the National Water Sector Strategy (NWSS) and the National Energy Efficiency and Renewable Energy Action Plans (NEEAP & NREAP). The first is a detailed road map for improving water conditions and service delivery nationwide and the second is a strategic document aimed at increasing the use of renewable energy to reach 12% by 2020.

Activities mitigating the risks of WASH-related mortality and morbidity were also implemented with the support of sector partners in order to enhance the provision of and access to safe water, sanitation and hygiene to agreed minimum standards and to strengthen national institutional capacities to improve service delivery systems. Building on these efforts, the Litani River Authority (LRA), a national construction and development agency responsible for the improvement of water resource management, benefited from river monitoring and water quality equipment in 2015 with the support of sector partners.

Capacity building and awareness-raising activities were organized throughout the year, in the management of water demand in particular. Specific support was provided to national agencies (such as the CDR and the LRA) through hands-on training and capacity building activities to cover issues related to the operation and maintenance of water supply networks, solid waste collection and management and wastewater systems.

The four Water Establishments, located in Beirut & Mount Lebanon, North, South and Bekaa governorates, are responsible for the design, implementation, operation and maintenance of water and wastewater services across the country. They have been key institutions for the implementation of the Water, Sanitation and Hygiene (WASH) crisis response under the LCRP 2015-2016.

With the support of humanitarian partners, 6 additional experts were provided to the Water Establishments in 2015 and 48m USD was invested to complete projects supporting the overall improvement of service delivery and infrastructure.

The North Lebanon Water Establishment (NLWE) benefited from the material and technical assistance of sector partners. As a result, the operation and management of water supply systems was strengthened in Qoubaiyat municipality through GIS training, the digitizing of asset data and the development of a water safety and operation & maintenance plan. Additional achievements include the distribution of GIS, water supply and maintenance equipment, the rehabilitation of water and sewage connections in Bab al Tebbaneh and the provision of water pumps in Koura region.

In order to support the Bekaa Water Establishment (BWE), the water supply network was replaced in Chtaura municipality and a water monitoring and management plan was developed with the assistance of sector partners. With a view to promote cost recovery and demand management for water supply, a subscription and water meter installation campaign was launched in three Bekaa municipalities. Trainings and equipment were also provided to conduct geophysical surveys as well as a research project aimed at increasing the cost recovery of public water supply services. Finally, two 30-year Water Supply Master Plans were developed in Taalabaya & Ablah to reduce the municipalities' vulnerability to water shortages.

Beirut and Mount Lebanon Water Establishment (BMLWE) and the South Lebanon Water Establishment (SLWE) were each supported by an information coordinator who contributed to the collection, analysis and dissemination of valuable information related to water and wastewater management and services.

While the crisis was and remains an environmental catastrophe, it did increase awareness of the dangers of environmental degradation, disease and pollution. As a result, the **Ministry of Environment (MoE)** benefited from the technical, material and staffing support of international partners in 2015 to mitigate the impact of the Syrian crisis on the environment. 26 additional staff were provided to the Ministry who contributed to enhance services related to solid waste, water and wastewater management and to raise awareness on issues related to the protection of biodiversity and climate change. The implementation of environmental legislation (such as the Environmental Impact Assessments and Strategic Environmental Impact Assessment) was actively promoted and technical guidelines were developed to strengthen the protection of natural resources at the local level.

The financial and technical assistance provided to Water Establishments by sector partners **in 2015** led to the following key achievements:

NETWORKS AND FACILITIES (EXTENDED/REHABILITATED)

- 82 km** of wastewater network
- 77 km** of public water supply distribution network
- 17** wastewater treatment facilities
- 347** water sources
- 336** communal level storage tanks or reservoirs
- 440** chlorination systems

EQUIPMENT

- 367** items of water supply equipment distributed (including generators and pumps)

BENEFICIARIES

- 3,130** households connected to public water supply network and equipped with taps and associated plumbing

KEY NUMBERS:

- \$ 61.5m** SUPPORT TO MUNICIPALITIES, UNIONS, MOEW AND WATER ESTABLISHMENTS FOR SERVICE DELIVERY AND INFRASTRUCTURE
- 40** STAFF PROVIDED TO MOEW AND WATER ESTABLISHMENTS
- 47** STAFF TRAINED ON WATER MANAGEMENT AND PRACTICES
- 17** WASTEWATER TREATMENT FACILITIES AUGMENTED/REHABILITATED
- 77** KM OF PUBLIC WATER SUPPLY DISTRIBUTION NETWORK EXTENDED OF REHABILITATED
- 82** KM OF WASTEWATER NETWORK AUGMENTED OR REHABILITATED
- 3,130** HOUSEHOLDS CONNECTED TO PUBLIC WATER SUPPLY NETWORK AND EQUIPPED WITH TAPS AND ASSOCIATED PLUMBING



Figure 8 - CEDRO:135 KWp hybrid solar photovoltaic generator system is completed and fully operational at LibanJus premises in Hadath, Beirut. Photo credits: UNDP/CEDRO

2016 NEXT STEPS

An appeal for 180 million USD was made under the stabilization component of the LCRP to primarily support the Ministry of Energy and Water, the Ministry of Environment and the four Water Establishments in 2016.

Sector partners will continue to provide their full support to these public institutions to ensure quality service delivery at both the central and local levels and to mitigate the risk of outbreaks and the impact of the ongoing crisis on the environment.

The assistance provided to MoEW will contribute to the successful implementation of its strategies and masterplans, with the primary objective of ensuring sustainable and equitable access to safe water across the country. Therefore, the capacities of Lebanese authorities in the strategic areas of water and wastewater management will be strengthened through technical support and capacity building.

Furthermore, solid waste management will be promoted, awareness-raising sessions will be conducted on key water, sanitation and public health risks with stormwater drainage services to benefit vulnerable communities.

In order to address the environmental concerns related to natural resource depletion, water and air pollution as well as land degradation, efforts will be made to assist MoE in mitigating the impact of the Syrian crisis on the environment in Lebanon. With the support of sector partners, environmental considerations will be addressed in stabilization activities and projects to improve solid waste, air quality, land-use and ecosystems. Environmental and related health considerations will be mainstreamed to mitigate the negative impacts of the Syrian crisis and the risks of disease outbreaks.

Through this collaboration, up to 2.02 million vulnerable Lebanese, displaced Syrians and Palestinian refugees will receive support to have access to improved water & energy services and better living conditions.



Support to Municipalities and Unions of Municipalities

With 1,108 municipalities and 52 municipal unions spread over its territory, Lebanon has a structured network of institutions and systems in place which has played a significant part in addressing the increasing needs of vulnerable communities since the onset of the Syria crisis.

Given the variety and scope of their mandates at the local level, municipalities have played a major role in relieving the pressure on basic services and in mitigating sources of tension. In a context of shrinking resources and strong demographic pressure, municipalities have needed significant capital investment and capacity building to ensure a sustainable and efficient provision of basic services in their areas of intervention, including public hospitals and dispensaries, infrastructure, public schools, vocational training and public housing. These interventions directly contributed to enhance the confidence and trust placed in local institutions, leading to a greater sense of legitimacy.

Building on the continuous support provided by partners for the past few years, more than 13m USD was injected to unions and municipalities in 2015, along with the provision of 55 additional staff. 7.5m USD was invested in 140 municipal projects to extend and enhance service delivery at the local level, representing a 50% increase since 2014 (71 additional projects, worth 9.2m USD, are currently ongoing in Lebanon). Similarly, 89 municipalities were supported through labour-intensive projects to perform small-scale infrastructure rehabilitation and cleaning services. Overall, the projects implemented with the support of partners enabled 157 municipalities across the country to improve service delivery and to successfully mitigate the impact of the Syria crisis at the community level.

In order to address the increasing needs of vulnerable communities in the water, sewage water, and waste management sectors, equipment was provided to 11 Unions of Municipalities (UoM) across Lebanon to enhance solid waste management (including garbage and lifter trucks, bins, mobile command centres, waste collection and emergency cars). In addition to the construction of a solid waste treatment facility in Ghazze municipality (Bekaa), a sewage network was built to collect the wastewater of 15,000 people in Chekka and transfer it to a treatment plant which is currently under construction in Enfe (North). Wastewater facilities (including wastewater treatment and lifting stations) were renovated and upgraded in 9 locations, water channels and culverts constructed in 5 municipalities and wastewater networks built or improved in 9 others. In order to improve water management, a borehole rehabilitation and reservoir construction benefited 18,000 people in Anjar (Bekaa), and the water supply networks and

systems of 10 municipalities were renovated and upgraded. In order to address the unfolding shelter crisis, municipalities were supported in the rehabilitation of substandard buildings to enable Syrian refugees to have access to decent and affordable accommodation. As a result, 6,764 shelters were rehabilitated to accommodate 33,821 persons and 3,000 Lebanese homeowners benefited from comprehensive rehabilitations of their apartments, contributing to inject an estimated sum of 67.5m USD into the local economy of these municipalities.

As the first respondents to the impact of the current crisis, 11 union of municipalities and 244 municipalities received capacity building support to manage the increased demand and pressure on services (104 more than in 2014). Municipalities' being strongly involved in conflict management and social stability building at the local level, their ability to mitigate tensions and prevent conflict was also enhanced through the training of 394 local actors in crisis management, technical and staffing support benefiting 207 municipalities and unions in 2015. In addition, social stability mechanisms were developed in 45 communities with the participation of local authorities and civil society actors in order to tackle socio-economic, socio-cultural and security issues and enhance conflict prevention and response.

KEY NUMBERS:

55 ADDITIONAL STAFF PROVIDED TO MUNICIPALITIES AND UNIONS OF MUNICIPALITIES

11 UOM AND 244 MUNICIPALITIES RECEIVED CAPACITY BUILDING SUPPORT TO RESPOND TO INCREASED DEMAND AND PRESSURE ON SERVICES (104 MORE THAN IN 2014)

157 MUNICIPALITIES SUPPORTED TO DELIVER SERVICES:

\$ 7.5M INVESTED IN 140 TANGIBLE MUNICIPAL PROJECTS – 50% MORE THAN IN 2014, 71 MORE PROJECTS WORTH \$9.2M ALREADY ONGOING.

89 MUNICIPALITIES SUPPORTED THROUGH LABOUR-INTENSIVE PROJECTS TO PERFORM SMALL-SCALE INFRASTRUCTURE REHABILITATION AND CLEANING SERVICES

The trainings conducted covered a wide range of topics including health care provision, operation and maintenance of water supply, solid waste and water management as well as wastewater and stormwater/drainage systems.

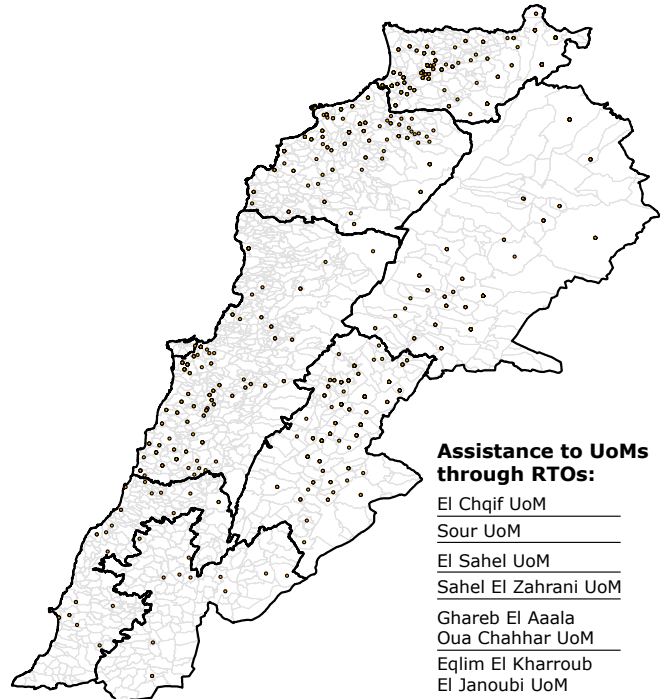
With a view to complement these efforts, partners contributed to the establishment of 8 Regional Technical Offices (RTO), each supporting a Union of Municipalities, covering more than 200 municipalities across Lebanon. Aimed at strengthening local governance and service delivery, these RTOs provided a variety of services, including technical planning, mapping, coordination and capacity building. Partners' assistance to these regional offices included the provision of equipment (laptops, desks, photocopy machines...), staffing support (covering the salaries of civil engineers, architects, surveying engineers, field monitors, IT or GIS operators, and social workers), as well as trainings.



Figure 9 - Laboue's soccer team kicks off the game at the inauguration of the new municipal soccer field. Photo credits: UNDP

Work with Municipalities of Lebanon in 2015

- Assistance to Municipalities through:
 - Support to participatory processes and community outreach
 - Capacity building (including staffing support)
 - Support to strategic planning
 - In-kind support (including equipment)
 - Support to service delivery (including CSPs)



2016 NEXT STEPS

In close coordination with line ministries, partners will strengthen national and local capacities to meet increasingly overwhelming service-related needs and seek to build confidence in the quality and accessibility of public services for vulnerable populations. The objective will be to expand community-level investments to reduce negative and unsustainable coping mechanisms, improve municipal delivery and promote intra- and inter-community dialogue.

Under the LCRP, 244 municipalities located in the 251 vulnerable cadasters will benefit from infrastructure programmes in 2016, while up to 200 will be directly supported by shelter partners, notably through the improvement of sites and infrastructure conditions in urban areas. In fact, a significant number of refugees and vulnerable Lebanese live in poor urban areas and neighborhoods. Through the implementation of pilot projects, support will be provided to upgrade and rehabilitate these poverty belts to help alleviate the multiple sources of pressure to which they are subject while improving the living conditions of the population. Partners' assistance will also include support to at least 3 basic/municipal service projects and one small-to-medium-scale infrastructure upgrade in each targeted municipality, along with environmental work and disaster risk reduction interventions.

In order to sustain the impact of such projects and strengthen the role of municipalities, partners will facilitate participatory processes and reinforce the capacities of 114 municipalities and 33 unions in terms of outreach, mediation, planning and management.

In total, 191.5m USD will be directly channeled towards municipalities and Unions through the LCRP 2016.



Support to Health Institutions

Support to the Ministry of Public Health

Under the scope of the LCRP, the public health system benefited from continuous financial, operational and technical assistance in 2015. A 23.9m USD contribution was injected to the Ministry of Public Health and healthcare centres (of which 1.2m USD specifically targeted the MoPH) and no less than 138 additional staff were supported to enhance the quality and access to basic services across the country.

Among them, 91 staff were provided to MoPH in 2015 in order to strengthen its capacities to respond to the increasing demand in the health sector (resulting from the massive refugee influx following the outbreak of the Syria crisis).

Medical supplies and materials were distributed by sector partners to MoPH, including cold chain systems, medical equipment, essential medications, vaccines and immunization supplies. With a view to prevent drug shortages, the Ministry's warehouse received contraceptives and medication, and its storage capacity was significantly increased through the installation of 3 cold rooms.

The treatment, care and monitoring of patients were enhanced through the provision and distribution of more than 820,000 medical files, cards, health records and booklets, alongside 10 000 clinical management protocols.

Throughout the year, health partners also took part in the organization of trainings and capacity-building sessions targeting MoPH staff. The trainings covered a wide range of topics including effective vaccine management, standard operating surveillance and response procedures, food safety, the international classification of diseases (ICD) and water quality monitoring. Specific capacity building sessions on surveillance and response were organized as part of the reinforcement of communicable diseases monitoring, early warning and response systems (EWARS). It contributed to the elaboration of 43 standard operating procedures (SOPs) for diseases surveillance and response, 9 surveillance guidelines for the reinforcement of communicable diseases monitoring, early warning and response system and of a comprehensive contingency planning/ preparedness plan for Diarrheal disease outbreaks. Additional policy development support to MoPH was implemented through the establishment of a referral pathway on case management of rape survivors and malnutrition and through the finalization of a national nutrition protocol.

Under the Mother and Child Health Strategy, service delivery guidelines on reproductive health were finalized and disseminated and around 200 medical and paramedical staff from 75 service delivery points were trained by humanitarian partners on this particular topic to improve maternal reproductive health.

Support to Primary Health Care Centers

Primary Health Care Centres (PHCs) are at the forefront of the provision of health services in Lebanon and have faced unprecedented challenges to carry out their mandate following the surge in healthcare demands.

In 2015, sector partners provided 22.7 m USD in support to primary health centres to enhance their capacity to provide quality services to hosting and refugees communities alike. Essential medications were distributed to PHCs to address the concerns related to the treatment of chronic diseases and 102,376 insulin vials were donated to PHCs aimed at covering the needs of around 500 diabetic patients for a period of one year. Essential medications for chronic illnesses were also distributed to 435 primary healthcare centres to serve a total of 150,000 vulnerable patients suffering from hypertension, cardiovascular diseases, dyslipidemias, diabetes, asthma, mental health and other long-term health conditions.

Building on these efforts, partners have also focused on the provision of acute medication, vaccination supplies and immunization equipment to enable PHCs to respond to the needs of vulnerable patients and prevent drug shortages nationwide. To enhance the screening, detection and treatment of non-communicable diseases, 56 early detection kits were also delivered to these centres under the Non-Communicable Disease Initiative, benefiting around 25,200 patients.

The equipment and rehabilitation of PHCs constituted a top priority to successfully strengthen service delivery at the local level. Therefore, 180 PHCs were provided with improved IT, cold chain and medical equipment (including ultrasound machines and solar/regular fridges) and 80 PHCs received additional reproductive health equipment which enabled a 40% increase in the utilization of health services in 2015, benefitting around 400,000 patients. In addition, 54 PHCs were rehabilitated with the assistance of sector partners.

Specific assistance was also provided to pregnant women and their children through the "Mother and Child Health Care" project. This initiative, initially implemented in Wadi Khaled and expanded in March 2015 to 3 new regions (Tripoli, Rachaiya, and Beirut), benefits pregnant women and children who do not have any form of health coverage to benefit from a comprehensive package of free healthcare services. This ambitious initiative allowed 379 antenatal care visits, 423 deliveries and 111 pediatric follow-up visits to take place last year.

The delivery of basic health services was enhanced through the training of 2,530 health care providers at PHC level. Among them, 165 health staff (doctors, nurses, social

workers, etc.) were trained on mental healthcare and psychological first aid in order to better address the needs of vulnerable communities. 275 primary healthcare staff benefited from capacity building trainings on risk assessment and early detection of hypertension and diabetes, increasing the total number of PHCs participating in the Non-Communicable Disease Initiative to 124 centres (compared with 60 centres in 2014). 218 PHCs were also trained on nutrition screening and referral. Additional capacity building support was provided to enhance child health services, the clinical management of common health conditions and rape, emergency obstetrics care and high-risk pregnancy births.

Support to Public Hospitals

26 government hospitals were supported in 2015 through the provision of medications, vaccines and medical equipment in order to enhance the quality of healthcare services at the local level and improve the treatment of vulnerable patients. The medications distributed concerned more specifically the treatment of malnutrition, tuberculosis, leishmaniosis (10,000 ampules of Glucantime provided) and rabies control and prevention (2,619 anti-immunoglobulin and verorab vials received by government hospitals).

Water testing laboratories were established and equipped in 8 public hospitals across Lebanon to monitor water quality and alert for any potential infectious disease outbreaks. In addition, 5 governmental hospitals were equipped with pressure rooms, 8 public hospitals with Emergency, Obstetrics and Neonatal Intensive Care Units and 10 others with incubators. Overall, 26 government hospitals received medical equipment and lifesaving drugs focusing on health emergencies and emergency obstetric care and 12 others benefited from anthropometric equipment, in-patient nutrient kits, therapeutic foods and essential drugs to improve the treatment of severe acute malnutrition.

At a more technical level, a specific training on case management of rape survivors was conducted for medical staff at 9 public hospitals, later completed by four on-the-job coaching sessions that took place in each facility. These medical facilities provided enhanced services to survivors of sexual assault to improve the referral and treatment of SGBV cases at the local level.

KEY NUMBERS:

\$ 23.9M IN SUPPORT TO MOPH AND HEALTH CARE CENTERS

91 STAFF SUPPORTED AT MOPH FACILITIES SINCE 2014

2530 HEALTHCARE PROVIDERS TRAINED AT PHC LEVEL

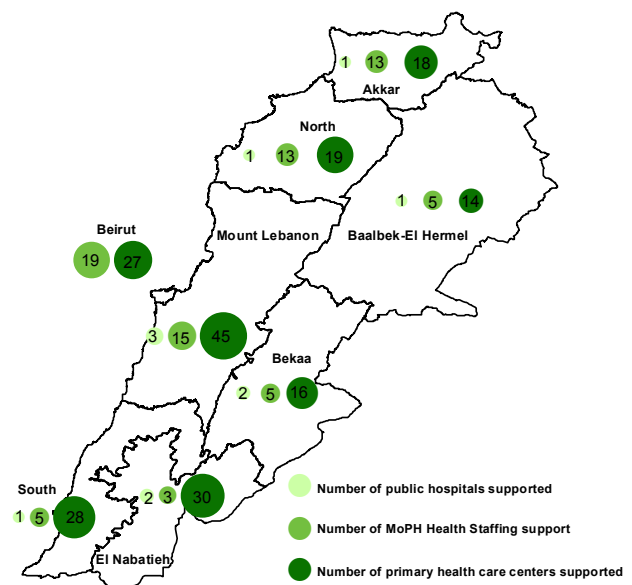
196 PHC CENTRES RECEIVED SUPPORT (THROUGH REHABILITATION, EQUIPMENT, SUPPLIES, TRAINING...)

80 CENTRES WITH ADDITIONAL REPRODUCTIVE HEALTH EQUIPMENT, ENABLING A 40% INCREASE IN THE UTILIZATION OF HEALTH SERVICES BENEFITING 400,000 PATIENTS

26 GOVERNMENT HOSPITALS SUPPLIED WITH MEDICAL EQUIPMENT AND LIFESAVING DRUGS FOCUSING ON HEALTH EMERGENCIES AND EMERGENCY OBSTETRIC CARE

SUPPORT TO PUBLIC INSTITUTIONS IN 2015

under the EU-funded Action: "Conflict reduction through improving health care services for the vulnerable population in Lebanon."



2016 NEXT STEPS

A large share of the 290m USD requested to support Health Systems will continue being dedicated to strengthening public health institutions.

The technical and financial assistance provided to the healthcare system will focus on:

- Strengthening healthcare institutions and enabling them to face the increased demand on services and the scarcity of resources (23.3m USD);
- Ensuring wider access to a primary health care package of basic services through the support of 250 PHCs (126.4m USD). This includes access to medication, vaccinations and mental health services and implies the integration of more Primary Health Centers into the MoPH network to enable a better geographical coverage of health services and an enhanced capacity to accommodate the important caseload in targeted areas.
- Improving access to hospitals and specialized referral care by targeting 27 public hospitals (134.3m USD);
- Expanding the existing Early Warning and Response System (EWARS) and facilitating the creation of an Event Management System (EMS) (0.76m USD).



Support to the Ministry of Agriculture

The agriculture sector, which employs 20 percent of the labour force and contributes to an average of six percent per year to the country's GDP, is a key economic sector in Lebanon. Its future growth depends on the overall capacity of the Ministry to address a series of critical challenges related to food security, safety and accessibility.

In 2015, the food security situation of vulnerable communities, including Lebanese, displaced Syrians and Palestine refugees from Syria and Lebanon significantly worsened, putting the food security sector under huge pressure. Food security partners managed to provide food assistance and support to the agricultural sector in a context of limited funding and increased food security needs.

The assistance provided to the Ministry of Agriculture (MoA) included livestock vaccination and monitoring, plant protection and pine production management, food safety procedures and the development of a sound agricultural statistics and information system. A total of 10 different trainings were provided to over 200 MoA staff throughout the year.

Overall, 800,000 animals (including cattle and small ruminants) were vaccinated by the end of June 2015. The vaccination campaign which was conducted involved the monitoring and establishment of a field animal diseases reporting system, as well as the development of control strategies and of a vaccination programme. In addition, facilitators were trained, along with veterinarians and vet assistants, in biosafety and biosecurity and on the prudent use of vet drug. Overall, 1 million doses of FMD and PPR vaccines were distributed to the Ministry of Agriculture, along with automatic syringes, while the Agricultural Research Institute of Lebanon (LARI) received Laboratory diagnostic ELISA kits and Rose Bengal Bottles. In total, 7 veterinary departments were supported and 110 staff were trained throughout the year to reach these ambitious vaccination targets.

Plant protection and pine production management was significantly improved via the implementation of a sustainable countrywide programme aimed at monitoring and managing the invasion of specific plant diseases. Partners provided technical training to MoA staff, agricultural stakeholders as well as livestock farmers and producers with a view to establish a standard operating procedures manual for plant protection and pine production management.

Building on these efforts, sector partners supported the Ministry of Agriculture in strengthening the capacities of farmers to apply best irrigation practices and increase soil fertility. An irrigation service unit was established within the Dardara Farmer Cooperative Headquarter in Marjaayoun to manage the distribution of irrigation water between farmers and develop an irrigation schedule to help them maximize their yields and minimize water use for production purposes.

With a view to enhance the quality of MoA's agricultural statistics and information system, specific trainings targeting the Ministry's Statistics Department staff were carried out, in addition to on-the-job trainings focusing on the execution of thematic statistics surveys. A sample frame was designed to conduct the agricultural production survey of 2015 with the objective to update agricultural statistics data, enhance MoA information system and facilitate access to information between statistics' producers and users.

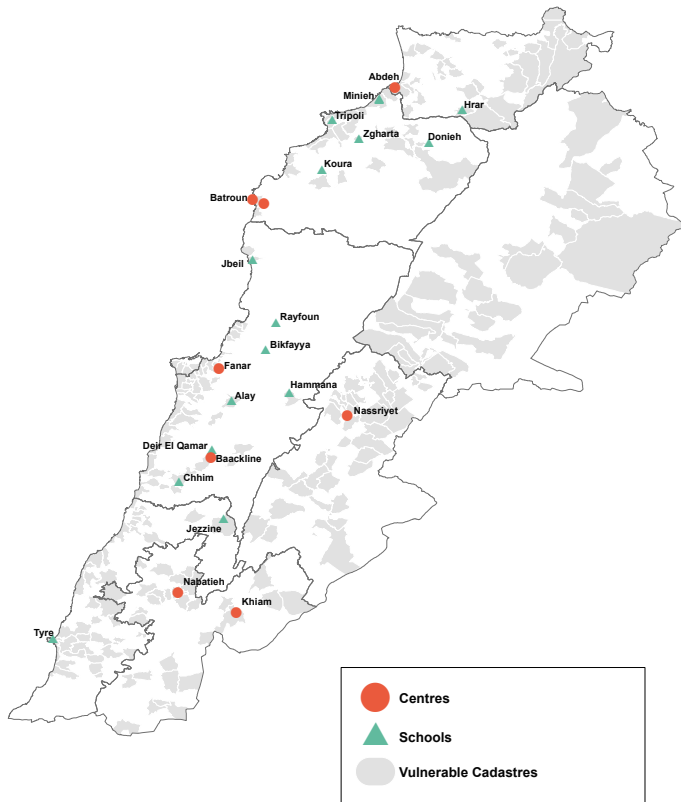
In parallel, food safety procedures and protocols were developed in close cooperation with Lebanese authorities. It resulted in the elaboration of a National Codex policy and in the establishment of a National Codex committee setting the basis for an efficient and effective food control system at the national level.

Agriculture playing a major role in economic growth and job creation in vulnerable communities across Lebanon, sector partners supported agricultural livelihoods through the provision of a short-term vocational training curricula for youth, internship opportunities and the organization of trainings of trainers benefiting MoA teachers.



Figure 10 - The ILO works with the Ministry of Agriculture in training youth to become skilled agricultural workers. Photo credits: ILO Michel Ziadé

Support to the Agricultural Sector



KEY NUMBERS:

\$ 4M

IN SUPPORT TO MOA (INCLUDING STAFFING, TECHNICAL AND MATERIAL ASSISTANCE)

800,000

ANIMALS VACCINATED

7

VETERINARY DEPARTMENTS SUPPORTED AND 110 STAFF TRAINED



Figure 11 - Vaccination campaign. Photo credits : FAO

2016 NEXT STEPS

Under the stabilization component of the LCRP, an appeal of 124m USD was made to support primarily the Ministry of Agriculture in addressing the basic needs of vulnerable Lebanese and refugee communities.

In 2016, food security partners will continue to play an active role in the implementation of MoA Strategy 2015-2019 with regards to the promotion of agricultural livelihoods and capacity building of national and local agricultural institutions in 2016 (i.e. the Lebanese Agricultural Research Institute/LARI, technical agriculture schools, and so forth).

Institutional support will be provided through the training of NPTP-SDC social workers and MoA staff. Agriculture authorities at both the central and local levels (among which 7 MoA offices and 27 MoA centres) will be supported to strengthen food security assistance. In order to ensure good nutrition practices and prevent dependency on food assistance, vulnerable communities will be targeted for micro-gardening and innovative food security activities with the support of the Ministry of Agriculture.

Food security information, statistics, analysis and monitoring will also be reinforced at the central level, along with contingency planning and preparedness with a view to enhance targeted short and long-term programming and the agricultural sector's resilience against food shocks.

Finally, MoA will receive technical assistance on Occupational Safety and Health standards to protect farms workers, especially women and children, from hazardous working conditions in agriculture. Building on these efforts, a farmers' registry will be established at the Ministry to promote the integration of social protection mechanisms in the agriculture sector. In parallel, the ties between agricultural centers and SDCs will be strengthened in all the governorates in order to enhance coordination, linkages and referral mechanisms to empower agricultural and social services provision at both the central and local levels.



Additional support to public institutions

In 2015, partners provided additional support to public institutions through a 3.2m USD contribution and the provision of 12 additional staff in order to enhance crisis prevention and response, disaster risk management (DRM) and strengthen coordination and information management at the central and local levels.

Material and technical assistance benefited the executive leadership with a strong focus on the Prime Minister's Office, the Ministry of Interior and Municipalities (MoIM), governorates and security forces. The Prime Minister's Office was more specifically supported in the elaboration of a national disaster response plan, the establishment of national and mobile operation rooms as well as in the organization of a national simulation to improve disaster risk management at the central level. National operation rooms were also built and equipped at Beirut airport, within the National Council for Scientific Research (CNRS) and in 7 Ministries and 5 governors' offices to conduct risk assessments. With a view to enhance DRM through institutional support, a law targeting the development of the National Disaster Management Authority was proposed by partners to improve the existing disaster risk management framework.

The security environment remained challenging in 2015, with threats posed by extremism and continuing regional divisions. Therefore, internal security forces and the municipal police were supported by partners and provided with equipment, trainings and policy development support. As a result, in September 2015, a technical committee was created to draft a Code of Conduct (CoC) and the Standard Operating Procedures (SOPs) of the municipal police. In addition, the General Directorate of General Security, a Lebanese intelligence agency placed under the authority of MoIM, received equipment for its registration centres and was supported in its border monitoring mission.

In parallel, the information management and coordination capacities of the Council for Development and Reconstruction were enhanced and four governors' offices were supported for planning and coordination, including through additional staffing.

Finally, the Central Administration of Statistics, a public administration within the Presidency of the Council of Ministers, was assisted in the design and implementation of the Labour Force and Households Living Conditions Survey with a view to improve the quantity and quality of socioeconomic statistical information in Lebanon and support human development planning.

KEY NUMBERS:

\$3.2M IN SUPPORT TO OTHER PUBLIC INSTITUTIONS

12 ADDITIONAL STAFF PROVIDED

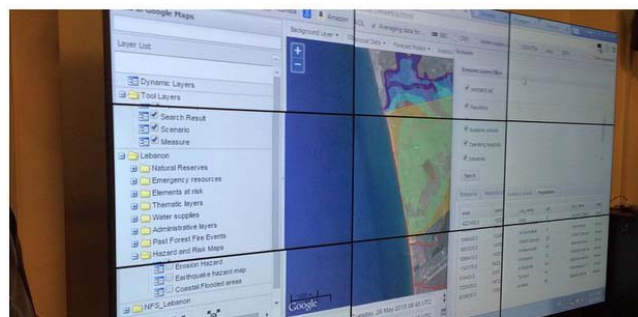


Figure 12 - Inauguration of the National Operations Unit at the Grand Serail. Photo credits: UNDP



Figure 13 - Civil defense performs rescue operations during a DRM simulation in Jbeil. Photo credits: UNDP



Figure 14 - Rehabilitating and supporting the fishmarket (fishermen cooperative) in Sarafand (South). Photo credits: UNDP



Figure 15 - Construction of latrines in Akkar. Photo credits: James Giles

CONTACT:

Luca Renda: luca.renda@undp.org

