

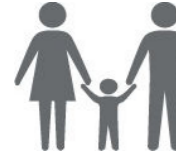
SYRIA REFUGEE RESPONSE

LEBANON Beirut and Mount Lebanon Governorates

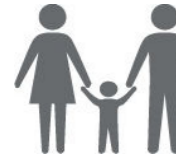
Distribution of the PHCs and MMUs based on January 2016 reporting

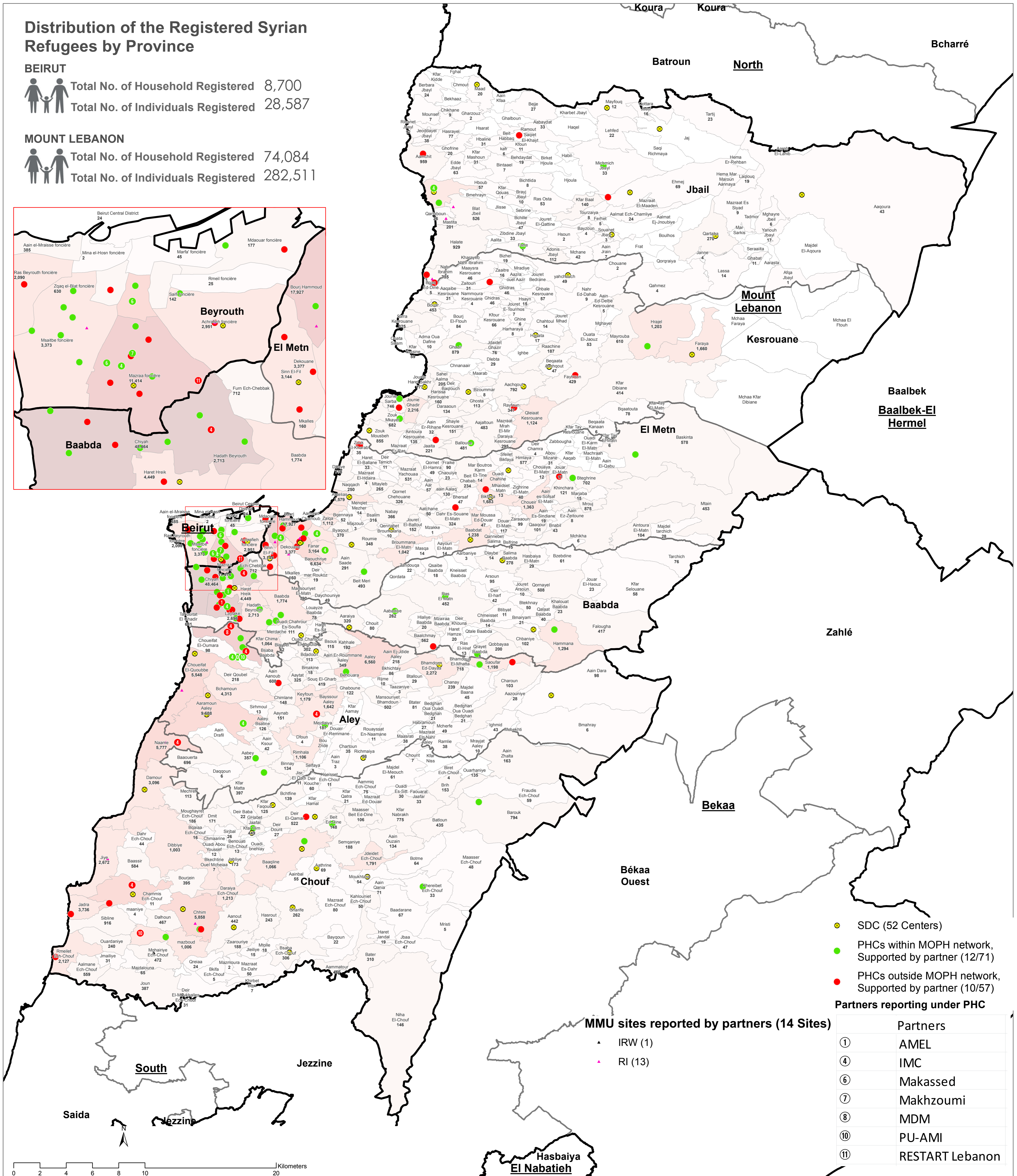
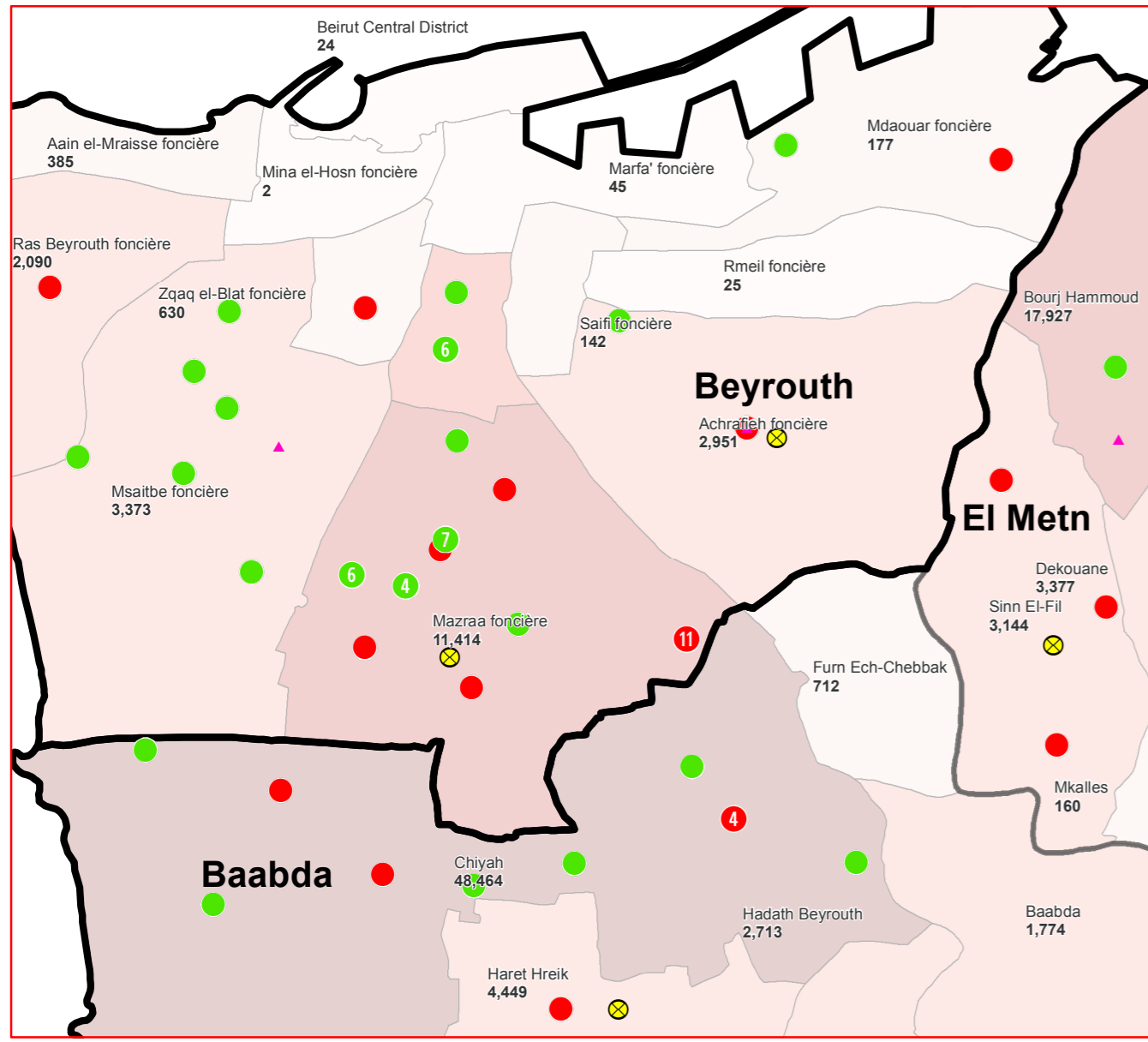
Distribution of the Registered Syrian Refugees by Province

BEIRUT

 Total No. of Household Registered 8,700
Total No. of Individuals Registered 28,587

MOUNT LEBANON

 Total No. of Household Registered 74,084
Total No. of Individuals Registered 282,511



Notes

This map has been produced by UNHCR based on maps and material provided by the Government of Lebanon for UNHCR operational purposes. It does not constitute an official United Nations map. The designations employed and the presentation of material on this map do not imply the expression of any opinion whatsoever on the part of the Secretariat of the United Nations concerning the legal status of any country, territory, city or area or of its authorities, or concerning the delimitation of its frontiers or boundaries.

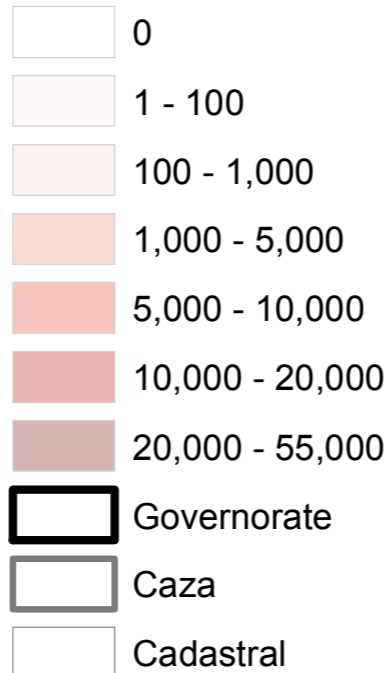
Data Sources:
- Lebanese Border, Caza and Cadastral Boundaries: NPMPLT 2005.
- Geographic Projection WGS 1984

Registered Refugees Figures by UNHCR as of 31 December 2015.
For more information contact Rana G. Ksaifi at ksaifi@unhcr.org

PHCs and MMUs Data as reported under the health database in Activityinfo

GIS and Mapping by UNHCR. For Information and updates
contact Jad Ghosn: ghosn@unhcr.org
Maroun Sader: sader@unhcr.org

No. of Refugees per Cadastral



MMU sites reported by partners (14 Sites)

- IRW (1)
- RI (13)

Partners reporting under PHC	
①	Partners
①	AMEL
④	IMC
⑥	Makassed
⑦	Makhzoumi
⑧	MDM
⑩	PU-AMI
⑪	RESTART Lebanon

Location Diagram

