

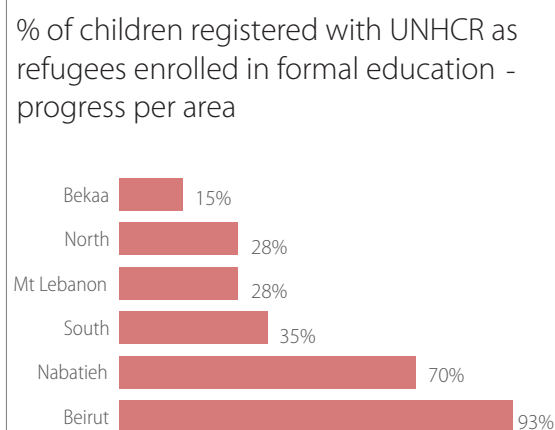
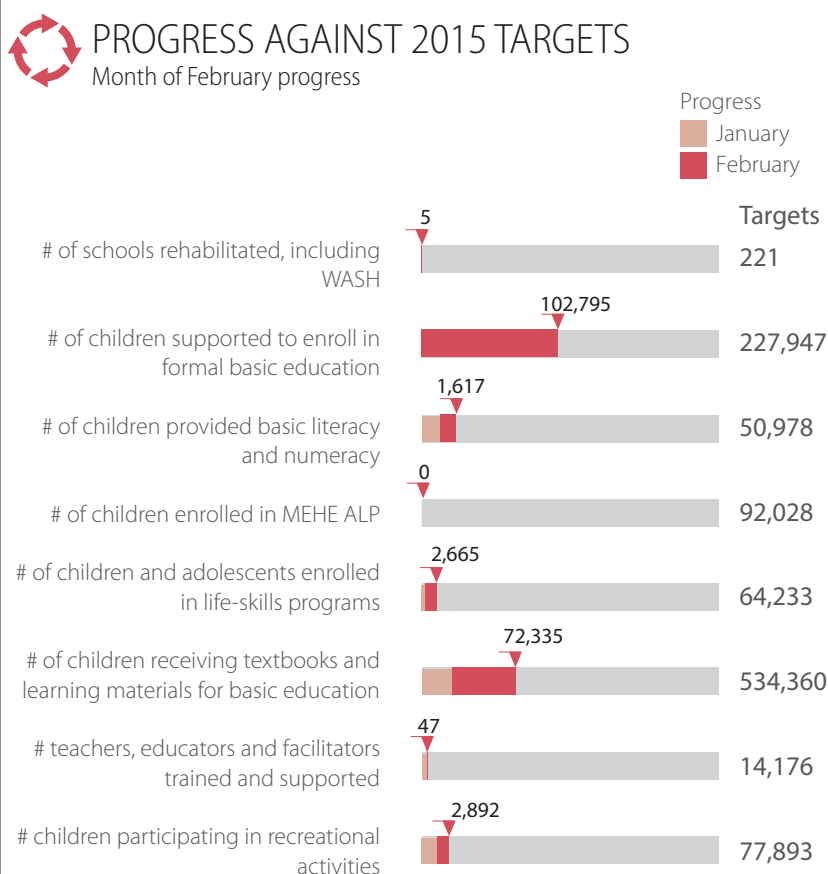
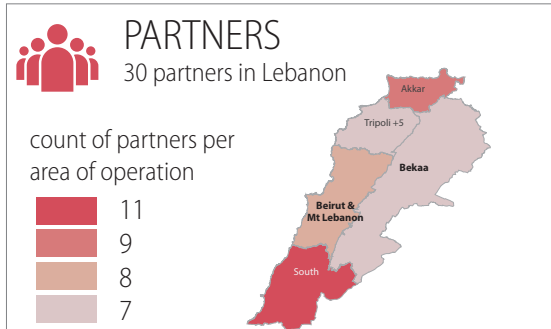
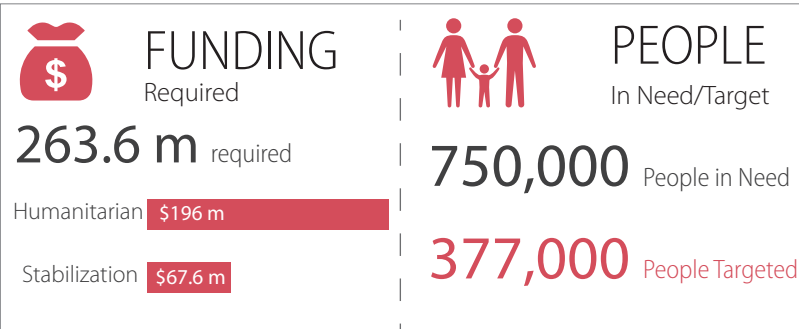
SITUATION ANALYSIS

The Lebanese Ministry of Education and Higher Education (MEHE) stated on 10 March that 44,507 non-Lebanese children have been enrolled in the first shift and 62,288 children - mostly Syrian - are enrolled in 160 second shift primary public schools. The enrolment of Syrian children in second shift started in January 2015 and schools might still enroll students until end of March should they approach second shift schools. The Ministry released a circular to all school directors to ensure that second shift schools remain open during weekends and holidays so that students are able to complete the minimum of 750 hours during the 2014/2015 academic school year.

Education partners continued their outreach efforts in order to facilitate the enrolment of a maximum number of Syrian displaced children into the second shift schools. UNICEF and UNHCR have for now funding to cover 20% of second shift enrolled children with transportation. Assessment for eligibility for transportation are based on distance to schools, safety and protection issues as well as family's vulnerability. Distribution of school supplies (i.e. School-in-a-Box) to all public schools continued with 985 primary public schools receiving school supplies covering the needs of all children enrolled in the first and second shift. As of February 2015, 458 primary public schools at an altitude higher than 500 meters were supplied with fuel to provide children in classrooms with proper heating.

Data compilation of children in formal education is ongoing and enrolment figures of first and second shift students will be updated as soon as they are available and confirmed by the MEHE. UNICEF, UNHCR and MEHE also started joint monitoring visits to second shift schools.

Education organizations continue where possible to refer children from previous non-formal education (NFE) programs to public schools. For those children who were not yet able to register in formal education, non-formal education programs continue to take place in learning centers, focusing on basic literacy and numeracy. Meanwhile MEHE is finalizing Standard Operation Procedures (SOPs) to initiate the roll out of the new Accelerated Learning Program (ALP) that will target children at least 10,000 who missed out on at least 3 years of learning and were not eligible to access schools. This new ALP programme is expected to start in April 2015. As of February 2015, there are 6,196 Palestine children from Syria (PRS) students (3,888 children in first shift and 2,308 in second shift) in 60 UNRWA schools throughout Lebanon. Training courses were conducted for PRS teachers including on inclusive education, refresher pedagogy courses and English language teaching courses. Recreational support activities are ongoing in UNRWA schools.



PROGRESS BY COHORTS
INDICATOR: # of children receiving textbooks and learning materials for basic education

