


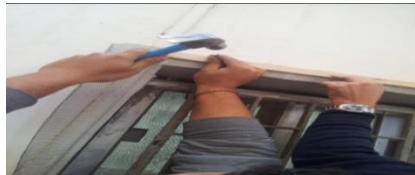


PU-AMI Sealing-off Kit

Items	Explanations	Pictures
<p><i>Fabric wire mesh + transparent plastic sheet + timber frames</i></p>	<p>To seal off the windows, to prevent water, wind and dust going through broken window.</p> <p>How to use:</p> <ol style="list-style-type: none"> 1) Put the wire mesh/transparent sheet over the window to transfer the size of the window to the wire mesh/ transparent sheet. 2) Use the cutter to cut the wire mesh/ transparent sheet. Make sure you add 10 cm extra from each side (e.g. if the window is 100cm*100cm cut them 120cm*120cm) 3) Put the wire mesh/ transparent sheet over the window then put the timber frames around the window. 4) Use the nails and the hammer to fix the timbers over the wire mesh/ transparent sheet. 	   

To fill the gap in glass, aluminum, concrete surface and wood.

How to use:

- 1) Firstly, clean the surface you want to fix and remove any dust.



- 2) Then, open the tube using the cutter.



- 3) Cut the silicone Tube's nozzle with 45 degrees using the cutter.



- 4) Put the silicon tube in the silicon gun.



- 5) Point the nozzle in the place you want to fill and start pressing the handle.



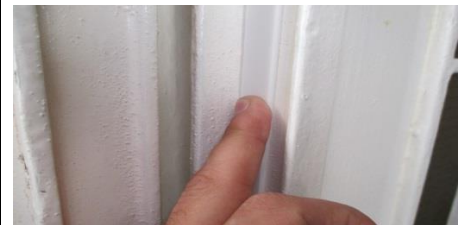
***Silicon +
acrylic tubes***

***Plastic rubber
for doors /
windows***

To fill the gaps between the door or window and the frames. To prevent wind, water leakage or dust going through windows or doors.

How to use:

- 1) Separate the adhesive plastic rubber from its cover part.
- 2) Stick the adhesive part to the door/window.
- 3) Make sure the rubber is completely attached to the door / window.



***Painting paste
– 5kg canister***

To fill up the small cracks or gaps. To stop water leakage and humidity by adding another layer to the walls/ceiling

How to use:

- 1) Firstly, clean the surface you want to fix from all dirty stains.
- 2) Then, use the scraper to fill the cracks/gaps with the paste and repeat back and forth on the gaps to make sure it is properly filled.
- 3) Finally, wait for the wall to completely dry, for at least 2 hours.

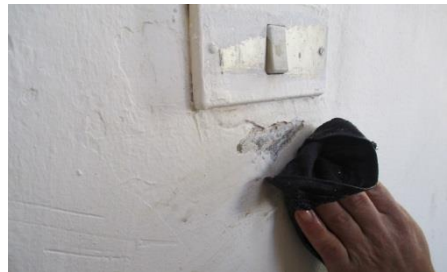


Moisture proof painting

Give the wall/ceiling a higher resistance against rot, humidity and fungus

How to use:

- 1) First, clean the surface you want to fix from all rot and leakage residue by using water or any cleaning product.



- 2) Use the sand paper to scratch walls/ceiling and make the surface smoother.



- 3) Cover all the edges you do not want to paint (e.g. doors edges) using the tape.



- 4) Mix each 3.6 Liter paint canister with 1 liter of water and keep mixing until it becomes homogeneous.



***Plastic sheet
(heavy duty)
orange***

To seal off the ceiling and prevent water leakage, wind, dust and insects passing through.

How to use:

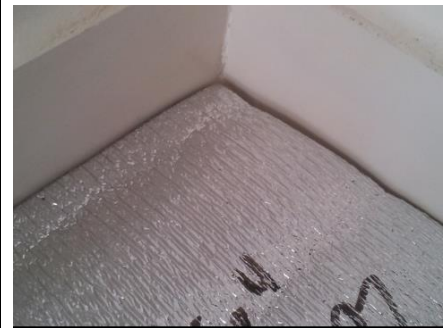
- 1) Put the plastic sheet over the ceiling/roof you want to cover.
- 2) Use the cutter to cut the plastic sheet and make sure you cut extra length from each side. For example if the ceiling is 3m * 3m, cut 3.25m * 3.25 m.
- 3) Use the nails and the hammer to fix the sheet to the edges.



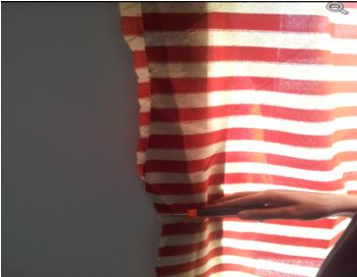


To seal off the floor and prevent heat transfer.

How to use:

- 1) Firstly, clean the floor with water or any cleaning product.
- 2) Secondly, use the cutter to cut the under layer and the carpet to exactly the same size of the soil you want to cover.
- 3) Then, put the under layer over the floor.
- 4) Use the silicon tube to attach the under layer to the floor. Use the silicon only in the corners.
- 5) Make sure there is no gaps between the under layer and the floor.
- 6) Finally, put the carpet over the under layer and attach it thanks to the silicon.



Carpet + under layer

<p><i>Fabric</i></p>	<p>To seal off window/doors for better insulation and to provide privacy.</p> <p>How to use:</p> <ol style="list-style-type: none">1) Use the cutter to cut the fabric the size you want.2) Attach the polyester rope with the piece of fabric.3) Attach the rope to the wall by using the nails and the hammer.	  
-----------------------------	---	--