

## SITUATION ANALYSIS

In January, winter related shelter activities have been boosted in response to the climate conditions.

10,918 vulnerable individuals living in informal settlements and substandard buildings were assisted with weatherproofing kits so that they can resist to increasingly harsh climate conditions. This includes replacement of shelter structures that have been seriously damaged within informal settlements.

To address increasing evictions, mainly of informal settlements in Bekaa, agencies have been boosting their search for alternative relocation sites, including on discussions with local authorities. However, in the relative absence of those alternatives, cash for shelter appears to be the prominent solution for the most vulnerable families.

UN-Habitat has started a 'Four Cities Programme' which will address the impact on poor urban communities by the refugee crisis, and will be engaged in both neighborhood upgrading projects as well as profiling the cities and poor neighborhoods to provide more knowledge on the urban dimensions of the crisis.



### FUNDING

(Required/received)

**147.2 m** (required)



**6.9%**  
of overall  
LCRP request



### PEOPLE

(In Need/Target)

**1.8 m** (People in Need)

**1.4 m** (People Targeted)

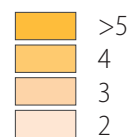
**Refugees** 863,417 | **Vulnerable Lebanese** 504,838



### PARTNERS

(Number of operational partners per Area)

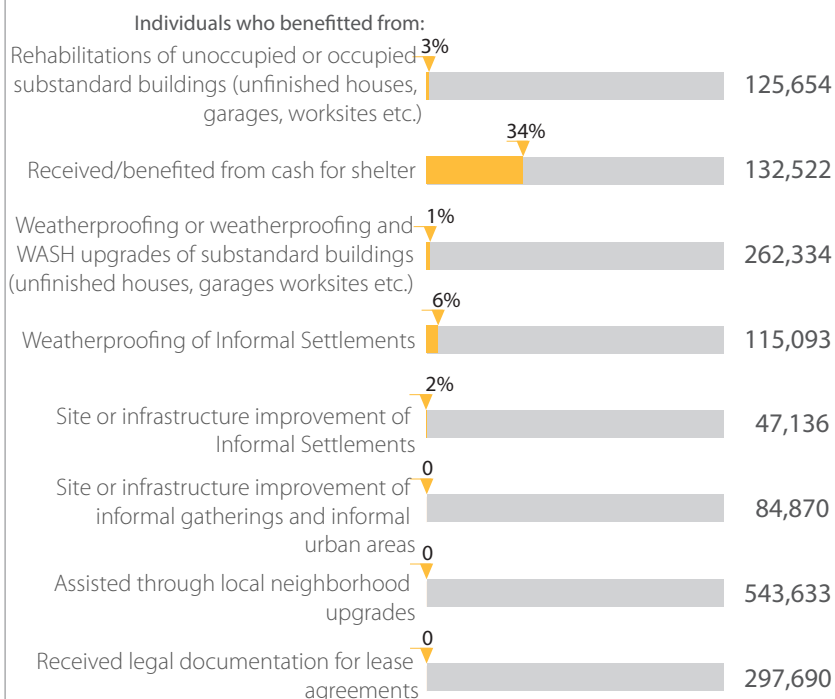
# partner per area



### PROGRESS AGAINST 2015 TARGETS

Month of January progress

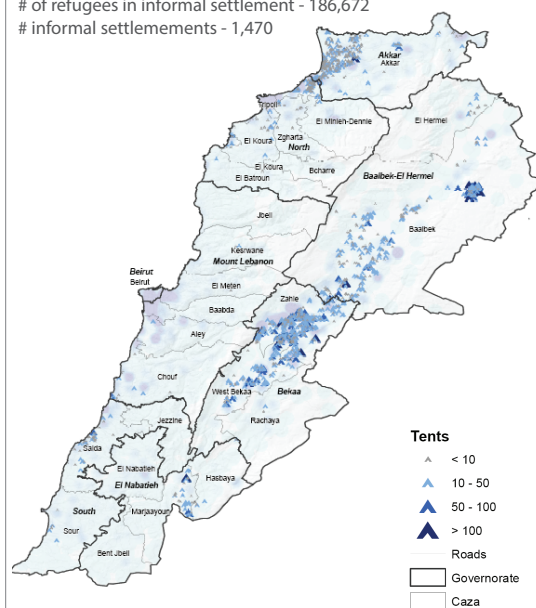
Progress  
Jan 2015



### DISTRIBUTION OF INFORMAL SETTLEMENTS IN LEBANON

January 2015

# of refugees in informal settlement - 186,672  
# informal settlements - 1,470



**Tents**  
 ▲ < 10  
 ▲ 10 - 50  
 ▲ 50 - 100  
 ▲ > 100  
 — Roads  
 — Governorate  
 — Caza

To download the full map:  
<http://data.unhcr.org/syrianrefugees/download.php?id=8106>