



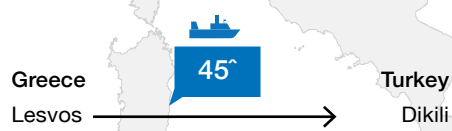
## Daily Report

**Arrivals and Departures:** This week, a decrease in the number of people arriving from Turkey to the Greek shores was observed. While last week, an average of 2,618 people arrived, the figure plummeted this week to 483 people.

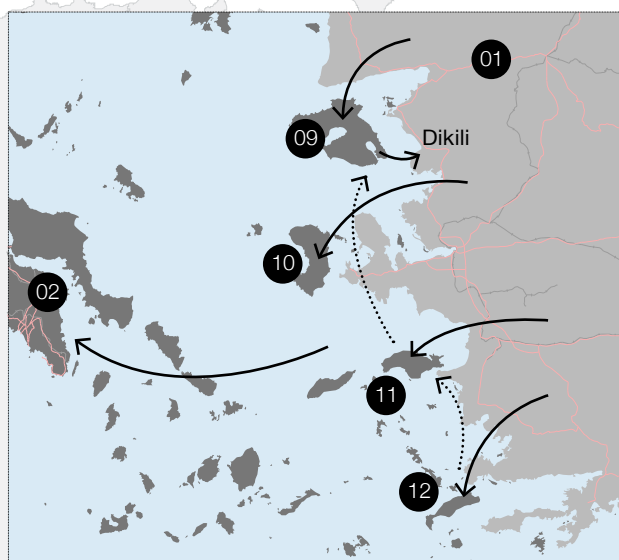
On Monday, 202 persons were returned from the Greek islands of Lesbos and Chios to Turkey. On Friday morning, a ferry carrying around 45 people left the Greek island of Lesbos for Turkey. Today, an estimated 200 people, from the islands of Kos, Samos and Lesbos, will be returned to Turkey on the basis of the Greek-Turkish readmission agreement with the support of the EU Border Agency, Frontex. There is no indication regarding where those returned today intended to apply for asylum in Greece as of yet. According to Greek authorities, no asylum seekers will be sent back. However, UNHCR is concerned that 13 individuals (including some Afghans) among those returned on Monday had indicated to UNHCR their intention to apply for asylum, but may not have had the opportunity to formally register their intention with local authorities.

**157**  
**Arrivals to Greece**  
Yesterday

**45**  
**Departed to Turkey**  
on 8 April 2016, 10:00 GMT



## Estimated Arrivals and People Present\* per Country Yesterday



Out of the approximately 6,000 people who arrived to the Greek Islands since the 20 March, following the the EU-Turkey, at least 2,870 expressed interest to apply for asylum. The Greek authorities confirmed that they will not be returned as their applications need to be filed and assessed. Consequently, returns will take place at a slower rate than envisaged.

On 7 April, Giorgos Kyritsis, the spokesperson for the Greek Refugee Crisis Management Coordination Body, said in a press statement that the transfer on a voluntary basis of families from Chios to Leros is being examined to "decongest the island". A ferry departed from Mesta port on Chios carrying 228 on board, mainly of Syrian nationality, who volunteered to participate and will be transferred to Leros. Efforts by police began on Wednesday and are currently ongoing. UNHCR is monitoring the process.

**Condition of People:** UNHCR is highly concerned with the condition of people across the crisis-affected countries and monitoring the situation as closely as possible.

Rising tension and distress have been reported across Greece. Over the past week, several protests took place at Eidomeni, Piraeus, on the Thessaloniki-Evzoni national highway, as well as across the islands. On Chios, UNHCR reports observing noteworthy limitations of asylum claims being processed following registration of intent; both processes are experiencing significant backlog. Due to uncertainty and lack of clarity, tension on the island manifested when 800 people left the vastly overcrowded facility last week which ultimately led to a march into Chios town. Yesterday, on Samos, reports

	Arrivals	Present*
01 Turkey	-	-
02 Greek Island	157	6,499
Mainland	32	46,167
03 fYRoM**	0	1,214
04 Serbia	58	1,300
05 Croatia	0	109
06 Hungary	116	-
07 Slovenia	0	27
08 Austria	196	-
09 Lesbos	43	-
10 Chios	94	-
11 Samos	12	-
12 Kos	8	-

\* Estimated people present currently not applying for asylum

\*\* The former Yugoslav Republic of Macedonia (please note that the fYRoM abbreviation is used for design purposes)

\* People departed to Turkey on 8 April 2016, 10:00 GMT



show that approximately 200 people left the hotspot and were moving towards the center of Samos where they congregated peacefully. No violence was reported.

In the former Yugoslav Republic of Macedonia, 10 people, who were part of a group of people who arrived irregularly on 14 March by crossing a river, do not have access to asylum procedures. The situation is being addressed with authorities at central levels by UNHCR.

1,300 people remain in Serbia following the border closure with Croatia. 533 people are located in the reception center in the south, 108 people in transit accommodation facilities in the west and 222 asylum seekers are waiting to be admitted to Hungarian transit zones at the two border crossings.

Croatian officials announced the Winter Reception Transit Center (WRTC) at Slavonski Brod will be closed by 15 April 2016. Therefore, all 96 of those accommodated there will be transferred to the existing permanent facilities for asylum seekers and irregular migrants.

**Critical Developments:** Earlier this week, the European Commissioner for Migration, Home Affairs and Citizenship, Dimitris Avramopoulos, visited Ankara to discuss the introduction of legal protection for asylum-seekers before the EU initiates their return. He reiterated that legal protection safeguards were indispensable to the return process part of the EU-Turkey agreement framework.

Following his visit, Turkish authorities announced that temporary protection status will be granted to Syrian nationals sent back from Greek islands. An amendment to the temporary protection regulation was issued recently in the official gazette dated 7 April 2016.

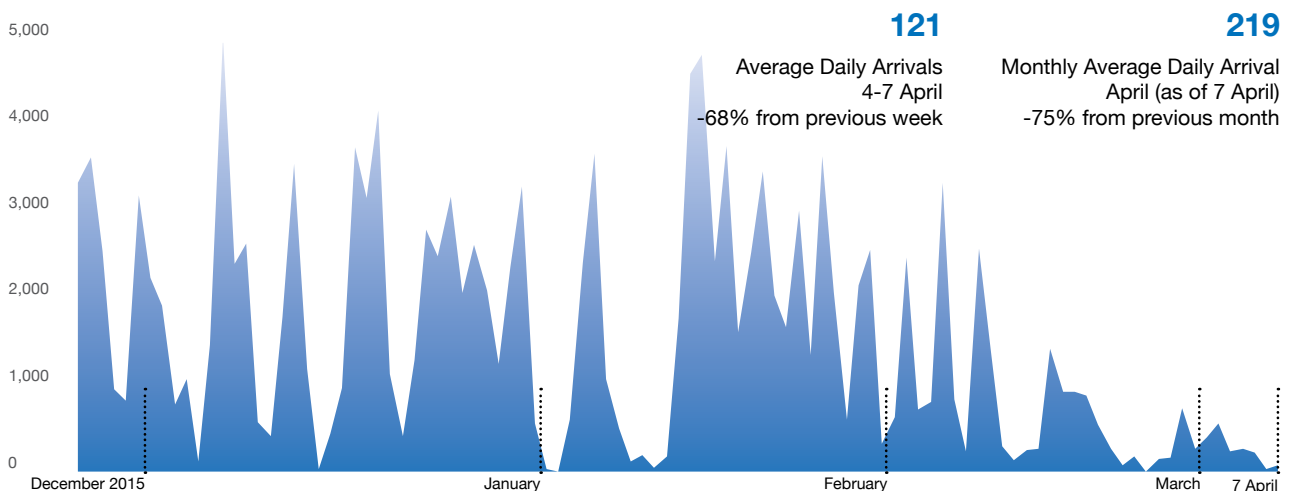
Accordingly, Syrian nationals who crossed from Turkey to the Aegean islands since 20 March and are readmitted to Turkey, will be granted temporary protection in Turkey upon request.

**Weather Headlines:** Unsettled through the weekend, with heavy thundery showers in places and the potential for localised impacts.

Fresh to strong winds at times leading to rough seas in the Aegean and around the Greek Islands.



### Average Daily Arrivals and Trends Greece



### Social Media

Having formerly worked for Lithuanian troops in Afghanistan, an Afghan refugee managed to [successfully apply for asylum](#) in Lithuania after appealing to the country's president and nationals via the use of social media.

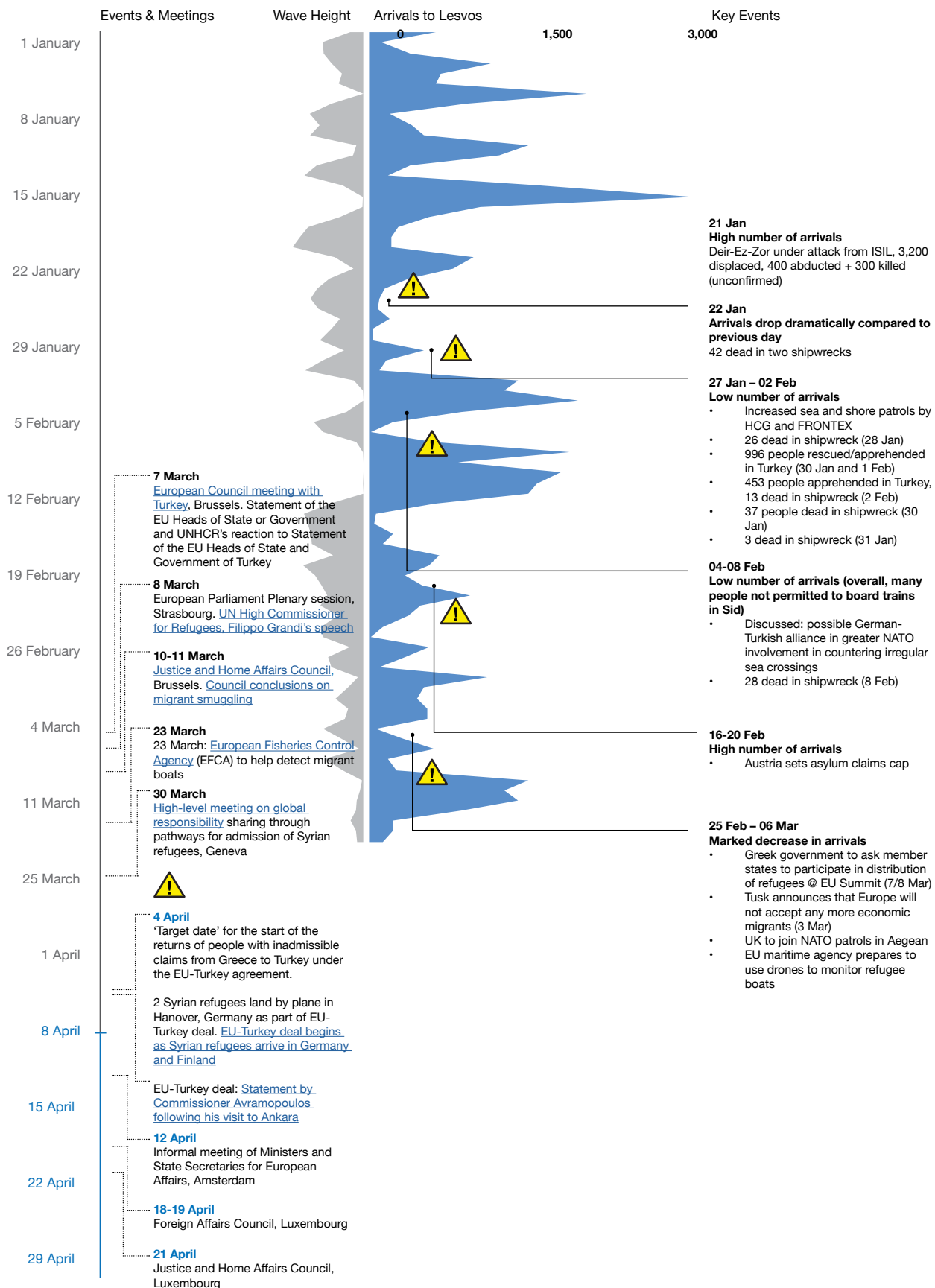
As part of a [programme](#) to host 10,000 Syrians in America by September 30 2016, under a directive issued by President Barack Obama, the first Syrian family (consisting of six people) was escorted to catch a flight from Jordan on 6 April to be resettled and integrated in the United States.

**Facebook Activity:** Facebook group RefuComm Communication and Information for Refugees issued a warning for volunteers as well as refugees and migrants residing in and around the port of Piraeus. The warning was issued in preparation for a protest organised by far-right Greek political party Golden Dawn which is to take place today, Friday, at 18h00.

**Twitter Activity:** [Patrick Kingsley](#): "On Wednesday, I went to the Turkish detention centre where [refugees and migrants] are being held pending deportation. Access [was] predictably denied". Kingsley went on to add in a follow-up post that "UNHCR [was] also denied access".



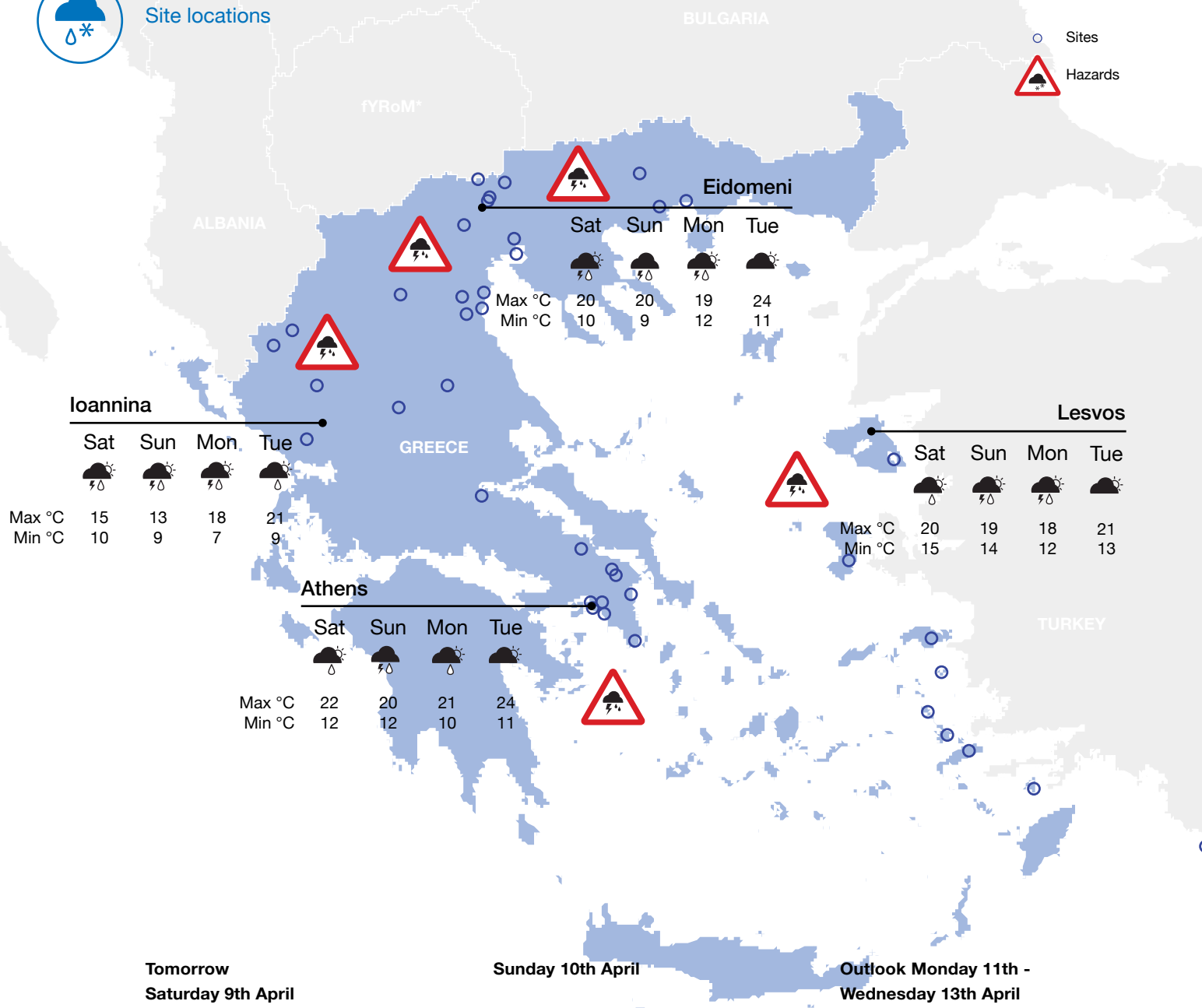
## Situation Overview





## Weather Forecast Greece

Site locations



Unsettled with showery outbreaks and a risk of thunderstorms developing, especially in northern and western Greece. Locally, these thunderstorms are likely to be heavy and could lead to localised flooding, potentially affecting refugee sites, with lightning, gusty winds and hail also being possible hazards. However, confidence in exactly where and when these showers will occur remains low. Southerly winds remain strong enough for choppy seas to develop in the central Aegean Sea and around the Greek Islands, which may present difficult conditions for small boats at times.

Similar to Saturday with a risk of isolated severe thunderstorms developing. Confidence on the timing and location of these showers remains low, however, localised impacts from heavy rain, lightning and strong and gusty winds remain a possibility. Fresh to strong southerly winds and choppy seas again affecting the Aegean Sea and around the Greek Islands.

Remaining unsettled for most parts on Monday with fresh north-westerly winds and isolated heavy thundery showers still a risk, again most likely in the north and west of Greece. Drier and more settled conditions with lighter winds becoming established from Tuesday, with temperatures increasing to well above the seasonal average by midweek.



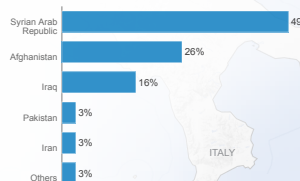


## Annex 1 Key Figures from the Portal

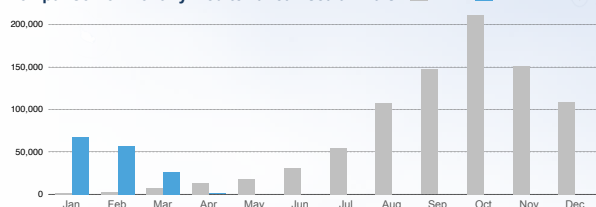
Increasing numbers of refugees and migrants take their chances aboard unseaworthy boats and dinghies in a desperate bid to reach Europe. The vast majority of those attempting this dangerous crossing are in need of international protection, fleeing war, violence and persecution in their country of origin. Every year these movements continue to exact a devastating toll on human life.

### Top-10 nationalities of Mediterranean sea arrivals

Top-10 nationalities represent 100% of the sea arrivals based on arrivals since 1 Jan 2016



### Comparison of monthly Mediterranean sea arrivals



152,152 arrivals by sea in 2016

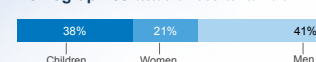
856,723 arrivals by sea in 2015

91% of arrivals come from the world's top 10 refugee-producing countries

© Last updated: 3 Apr 2016

Sea arrivals in 2016  
Main routes through the Mediterranean

### Demographics based on arrivals since 1 Jan 2016

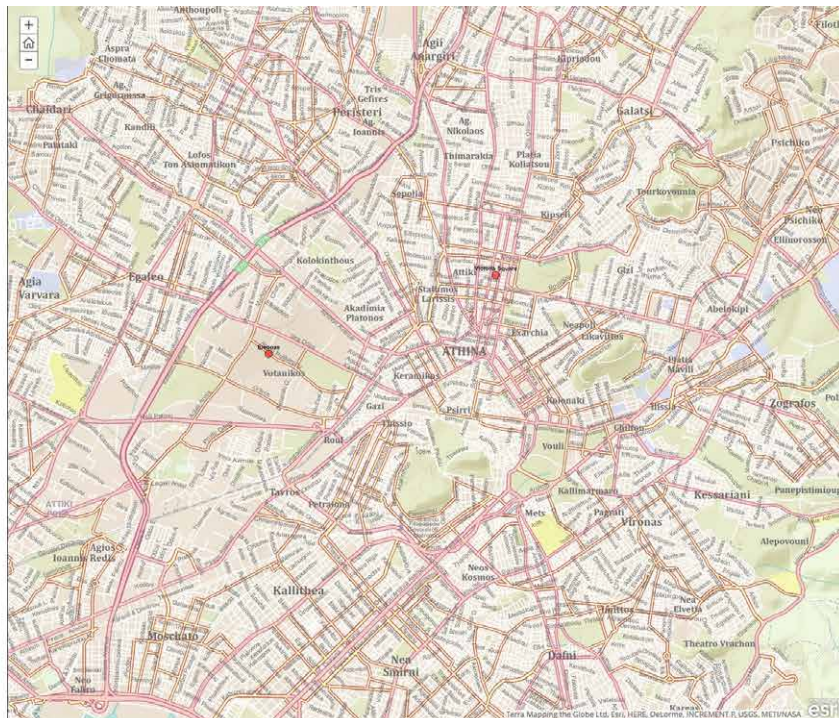
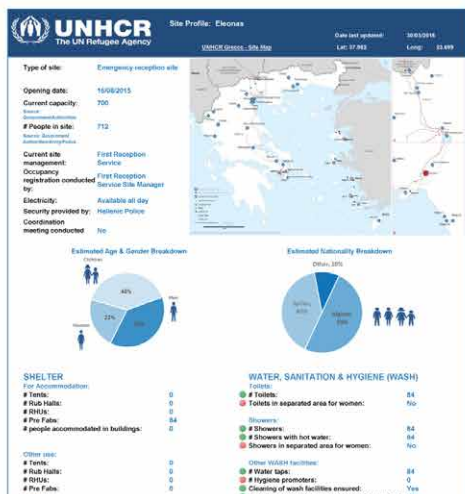


\*Serbia (AND KOSOVO: S/RES/1244 (1999))  
The boundaries and names shown and the designations used on this map do not imply official endorsement or acceptance by the United Nations

### Site profiles - Greece

- Eleonasa
- Elliniko I
- Elliniko II
- Elliniko III
- Serres
- Vasilissa Square

### Eleonasa



Source: <http://unhcr.gr/sites/profile>