

# REFUGEE COORDINATION - GREECE

Leading and coordinating an effective, coherent and predictable response in support of the Government of Greece.

Orientation Sessions – 2016.

# THE REFUGEE COORDINATION MODEL (RCM)

- **Provides** a mandated framework for leading and coordinating a refugee response;
- **Offers** an inclusive platform for planning and coordinating refugee operations;
- **Clarifies** coordination modalities;
- **Ensures** the response is predictable, effective and inclusive: partnership, transparency and inclusivity

# THE RCM: KEY PARAMETERS

1. Primary responsibility to protect refugees rests with the State;
2. Coordination needs determined by host government capacities and approaches;
3. Builds on refugees' and hosting communities' resources;
4. Applicable in ALL refugees situations and throughout program cycle.

# RCM LEADERSHIP & COORDINATION

1. **Include** partners in Response and Contingency Planning;
2. **Involve** partners in protection and solutions strategies;
3. **Provide** common services such as information management with the involvement of partners
4. **Involve** partners systematically on key decisions and strategies;
5. **Invite** partners to co-coordinate sectors where expertise and capacity is available at the point of delivery;
6. **Provide** partners with fund-raising platform i.e. through the Refugee Response Plans.

# COORDINATION: GREECE

- Lead and coordinate an effective, coherent and predictable response in support of the Government of Greece;
- **Improve service delivery:** maximize capacities & resources and eliminate duplication;
- **Ensure predictability:** coordination = preparedness = response;
- **Support the Response Plan –**  
i.e. the Regional Refugee and Migrants Response Plan

# GREECE: AN EFFECTIVE COORDINATION SYSTEM

- Flexible, adaptable and needs-based;
- Inclusive, transparent and predictable;
- Solid, transparent information management systems;
- Supports strategic planning and emergency preparedness;
- Maximises efficiency and impact.

# GREECE COORDINATION: CORE ELEMENTS

- **The Government of Greece:** primary responsibility to protect refugees;
- **The Refugee Coordinator – UNHCR representative:**
  - i. Leadership and Coordination;
  - ii. Strategic Vision and a Response Plan;
  - iii. Advocates for the International Protection of Refugees;
  - iv. Principal interlocutor with the Government and other key stakeholders.

# COORDINATION STRUCTURE - GREECE

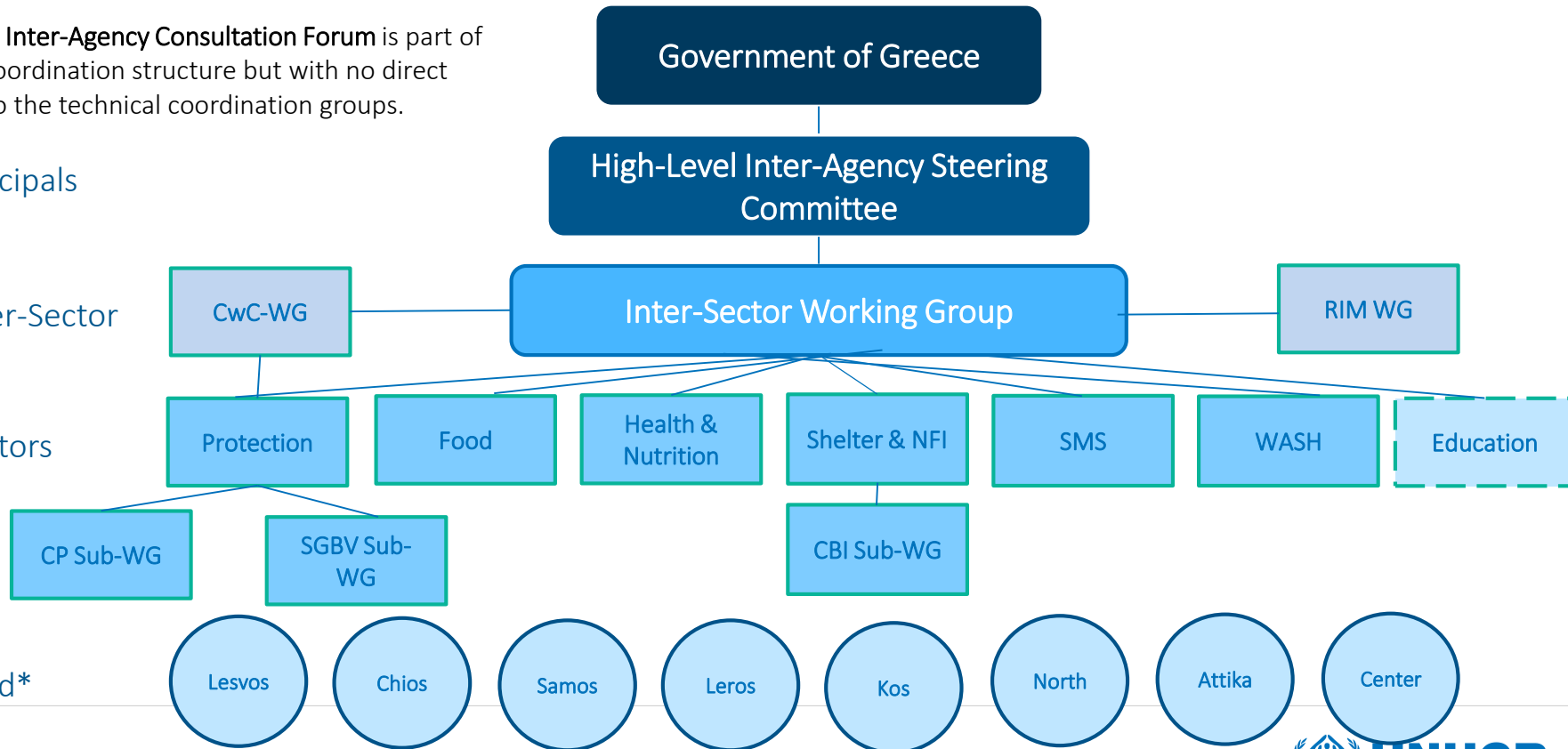
\* The **Inter-Agency Consultation Forum** is part of the coordination structure but with no direct line to the technical coordination groups.

Principals

Inter-Sector

Sectors

Field\*



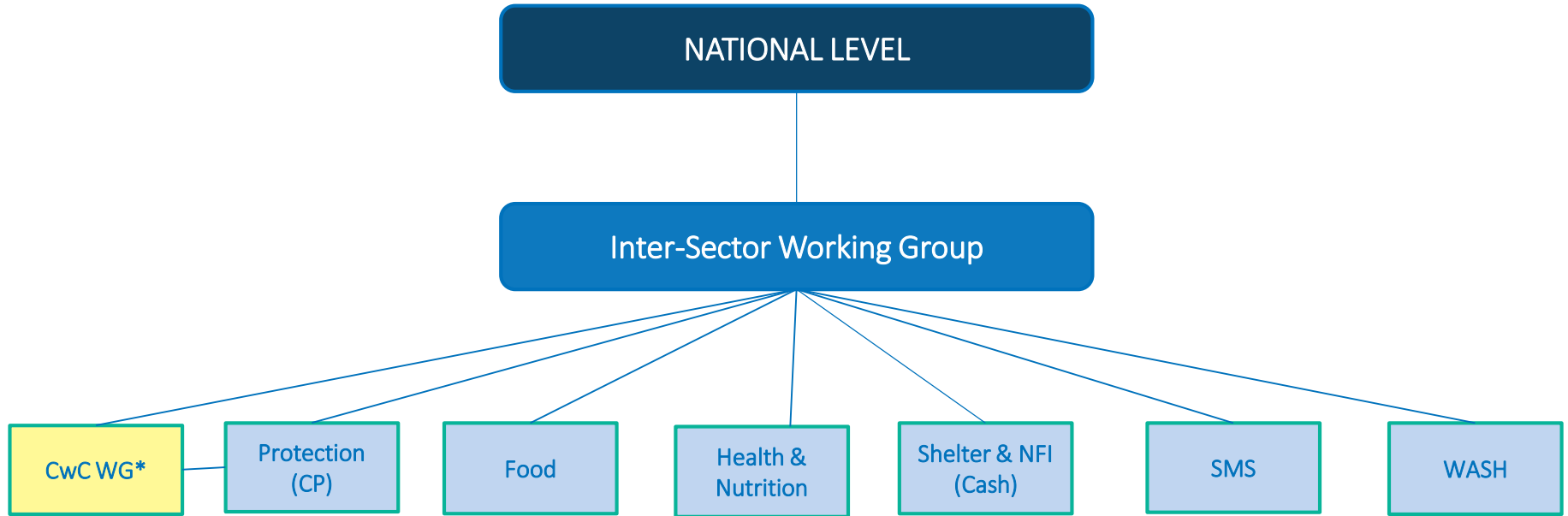
\*The structures replicates by location with modifications based on context and need.



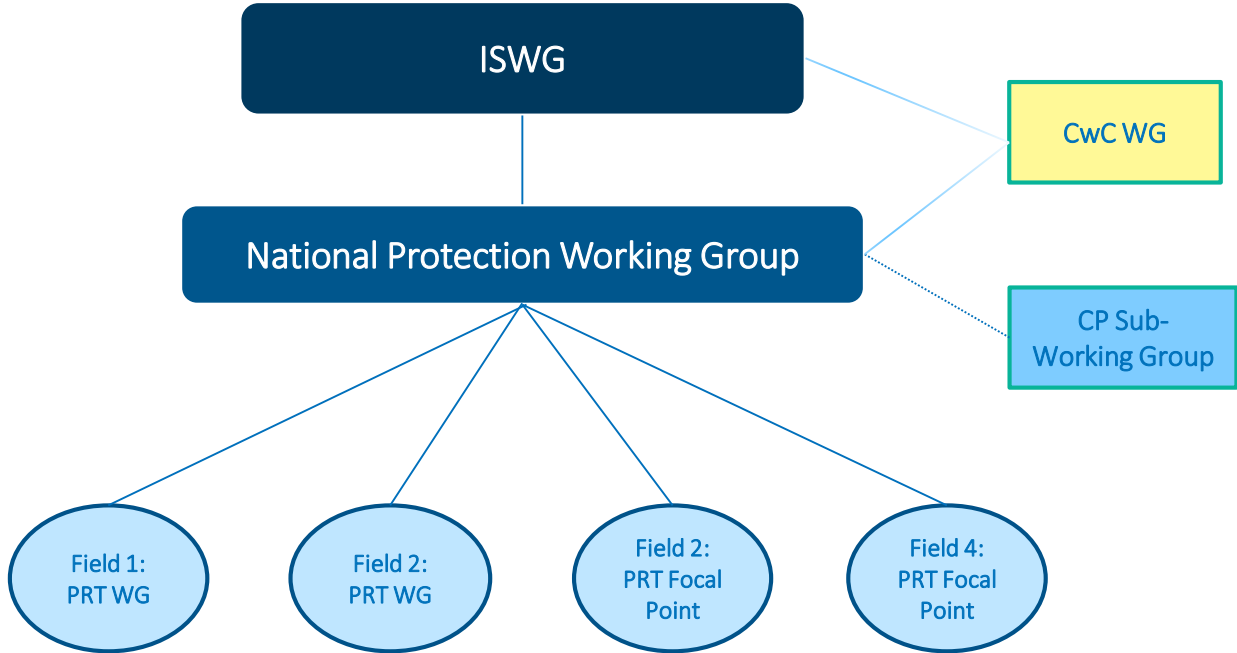
# FIELD-BASED COORDINATION

1. **Key to service delivery:** effective implementation and operationalisation of strategic priorities;
2. **Flexibility & Autonomy BUT Alignment & Consistency;**
3. **Avoid one size fits all:** structures vary depending on size and needs.

# SAMPLE FIELD LEVEL COORDINATION STRUCTURE – Small



# SAMPLE SECTOR COORDINATION STRUCTURE



# IS THE SYSTEM FIT FOR THE PURPOSE?

1. Are roles and responsibilities at all levels clear?
2. Do structures meet the needs?
3. Is the system transparent, inclusive and accountable?
4. Are information management systems in place and available?
5. Are ToRs, SOPs, etc., appropriate, clear and widely available?

NEED ANY COORDINATION SUPPORT?

# THE INTER-AGENCY COORDINATION UNIT

- Provides technical support and oversight in all coordination related issues;
- Promotes coordination standards and quality assurance;
- Support inter-agency coordination capacity building efforts.

# 2016 GREECE COORDINATION E-TOOLKIT

## Informing leadership and coordination:

- Coordination principles, roles and responsibilities and structures;
- Response planning, emergency preparedness and information management
- Group decision-making and meetings management.

# ADDITIONAL COORDINATION TOOLS

- UNHCR Refugee/Migrants Emergency Response – Greece (<http://data.unhcr.org/mediterranean/>)
- Information Management Products
  - Site Monitoring Tool
  - Site online map
  - 3 and 4Ws
  - Joint Assessment Registry
  - Contact lists
- Winter Cell Updates



# Thank You!

- **Alexandra Krause**, Snr. Inter-Agency Officer a.i.:  
E-mail: [KRAUSE@unhcr.org](mailto:KRAUSE@unhcr.org)  
Phone: +30.694 8986 222
- **Elena Del Fabbro**, Inter-Agency Coordination Officer:  
E-mail: [DELFABBR@unhcr.org](mailto:DELFABBR@unhcr.org)  
Phone: +30.695 549 0999
- **Maria-Antouaneta Saranti**, Snr. Inter-Agency Coord. Assistant  
E-mail: [SARANTIM@unhcr.org](mailto:SARANTIM@unhcr.org)  
Phone: +30.695 518 7055