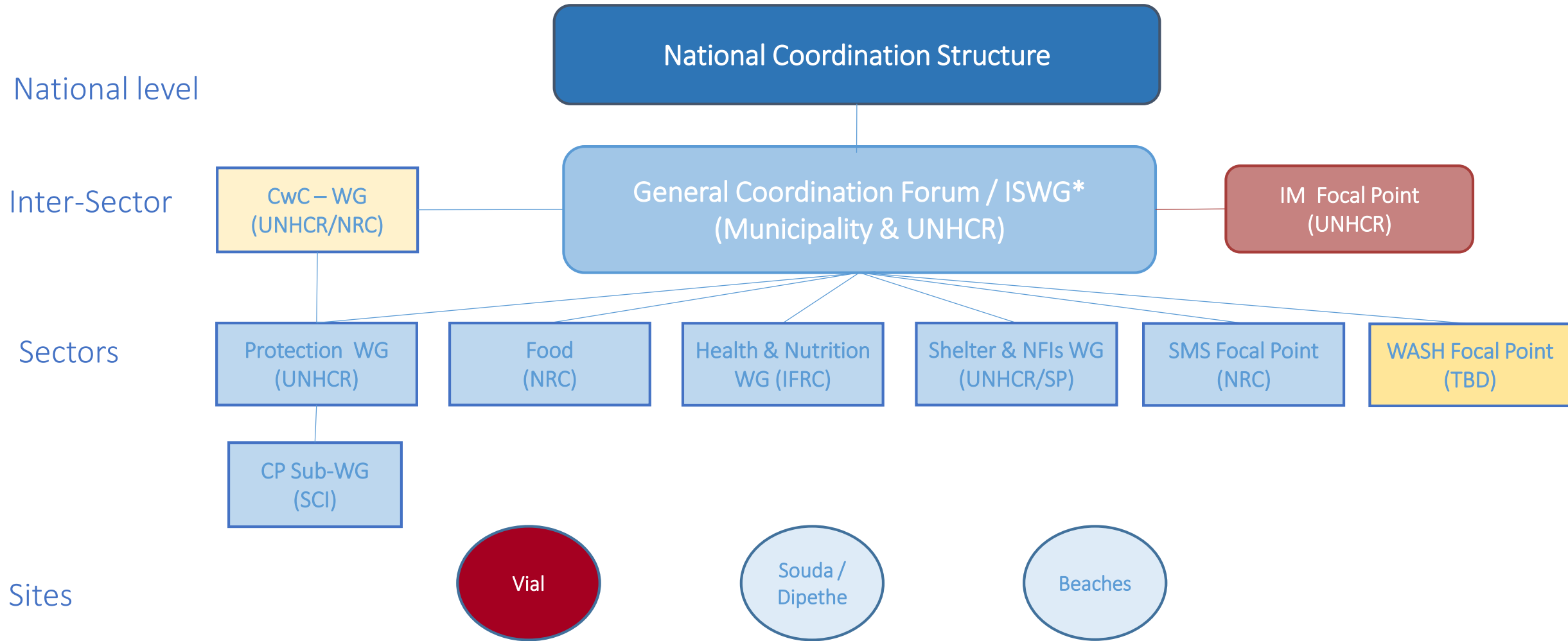


# COORDINATION STRUCTURE - CHIOS



- Part of the General Coordination the ISWG can meet on an ad-hoc basis to address technical inter-sector issues. Members are closed to coordinators, co-coordinators and focal points.
- \*\* The Shelter and NFIs Working Group also includes Transports and Logistics
- \*\*\* The Protection Working Group also address issues related to SGBV.
- \*\*\*\* CwC sits within the protection but is also cross-cutting.
- \*\*\*\*\* Humanitarian Actors have no coordination functions in Vial.