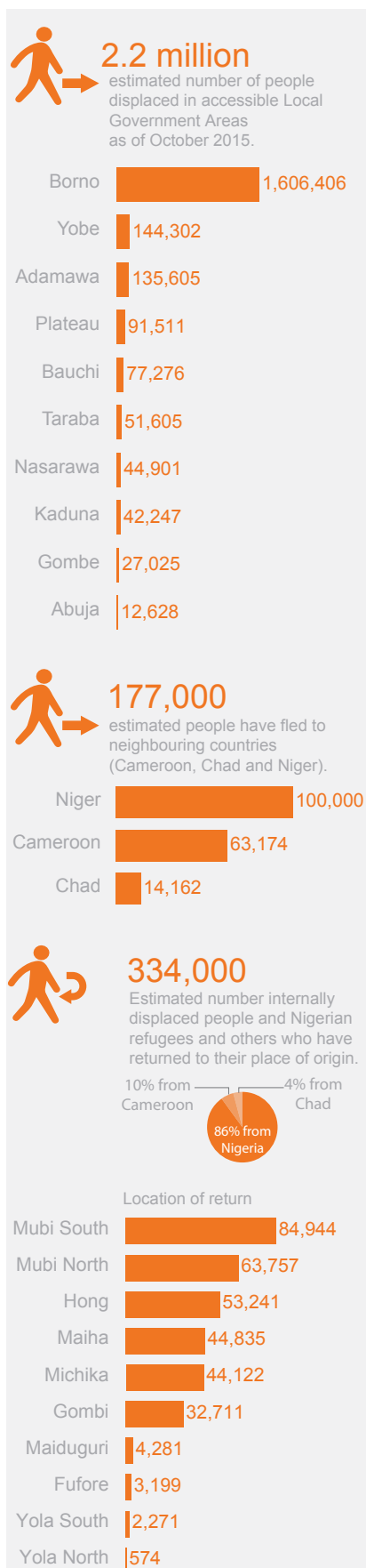


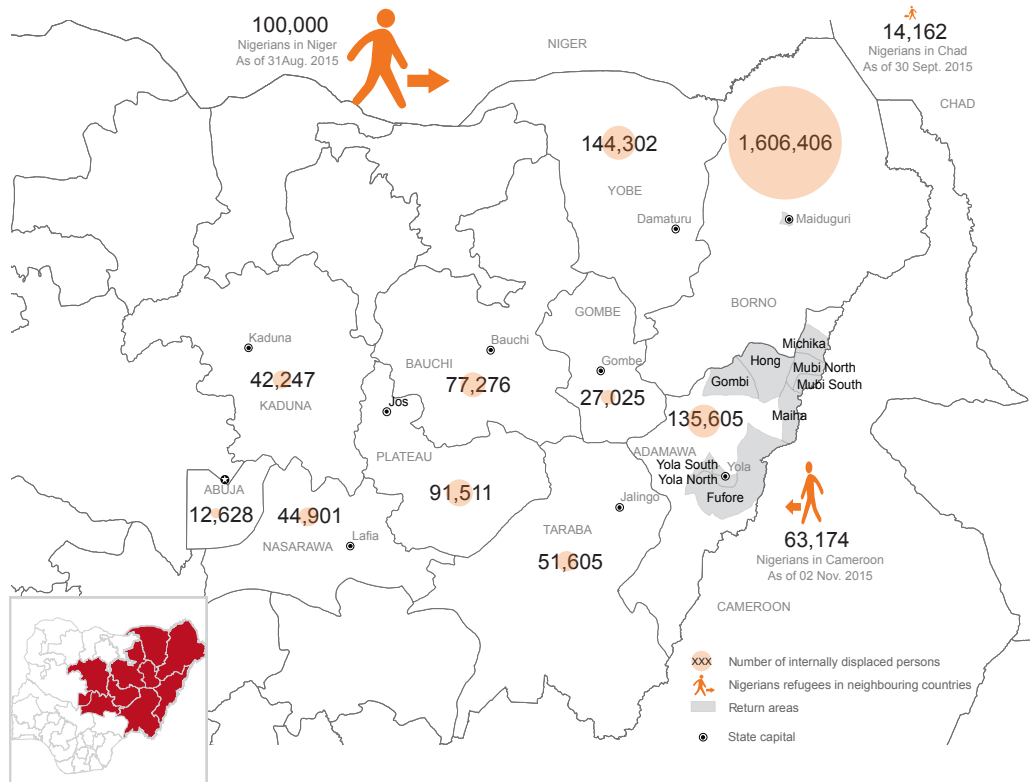
2.2 million Nigerians are internally displaced in ten states in the northern and central parts of Nigeria, according to Round VI of the Displacement Tracking Matrix. 91% of the total number of internally displaced people (IDPs) are living in the North-East. The main reason for displacement cited by 89% of the IDPs is the conflict. Furthermore, more than 177,000 Nigerians have escaped the conflict to neighbouring countries. A relative improvement in the security situation in some areas in the North-East has resulted in spontaneous movements of return to areas of habitual residence for a number of IDPs: the current figure is 334,000, including a number of Nigerians who returned from Chad and Cameroon. They now face new challenges: in returning to these areas, homes and social infrastructure have been destroyed, and resources are scarce.



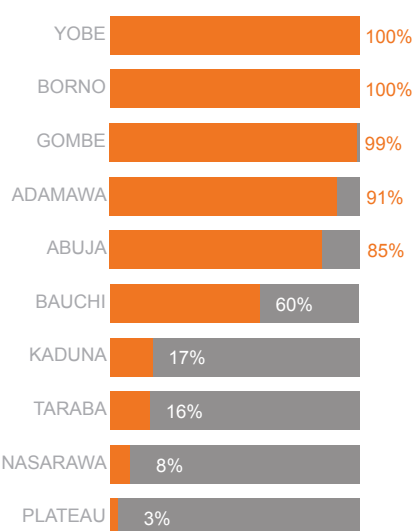
## KEY FIGURES



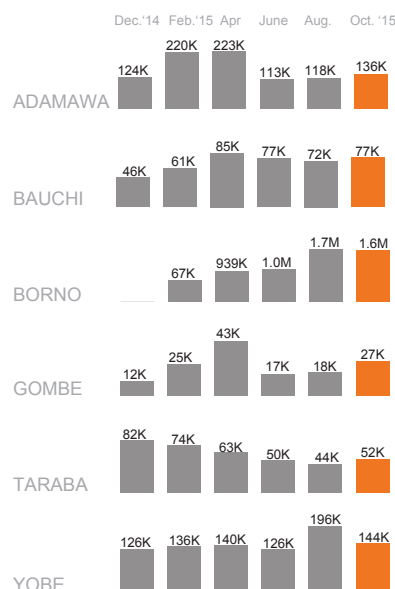
## NIGERIA DISPLACEMENT STATUS



## DISPLACEMENT DUE TO CONFLICT BY STATE



## TRENDS OF INTERNALLY DISPLACED PEOPLE IN THE NORTHEAST



## INTERNALLY DISPLACED PEOPLE PROFILE

