

Lake Chad Basin Crisis: IOM Response

April 2016



Nigeria

2,241,484 IDPs
Source: DTM (Camps & Host Communities)

229,082 Beneficiaries Assisted

IOM is lead of CCCM WG and Emergency Shelter/NFI WG (w/ NEMA)

IOM activities:

- DTM (8th Round - Feb 2015)
- Emergency Shelter and NFI Distribution
- Psychosocial Support
- Livelihoods Support
- Biometric Registration
- CCCM Capacity Building

Niger

319,036 Displaced Persons*
Source: Govt of Niger/UNHCR/OCHA

IDPs** 48% Refugees 31% Ret. 21%

137,121 Beneficiaries Assisted

IOM is co-lead of the Shelter and NFI WG (w/ CCH – Cabinet of Prime Minister)

IOM activities:

- Shelters and NFI distribution
- Cash for Work
- Community Cohesion
- Income Generating Activities (IGA) for youth at risk

Cameroon

270,264 Displaced Persons*
Source: DTM (Feb 2016), UNHCR (Apr 2016)

IDPs 63% Ref. 24% Ret. 13%

29,599 Beneficiaries Assisted

IOM activities:

- DTM (2nd Round - Feb 2016)
- Emergency Shelter and NFI Distribution
- Support to Agriculture

Chad

109,633 Displaced Persons**
Source: DTM, WFP (Apr 2016), UNHCR (Mar 2016)

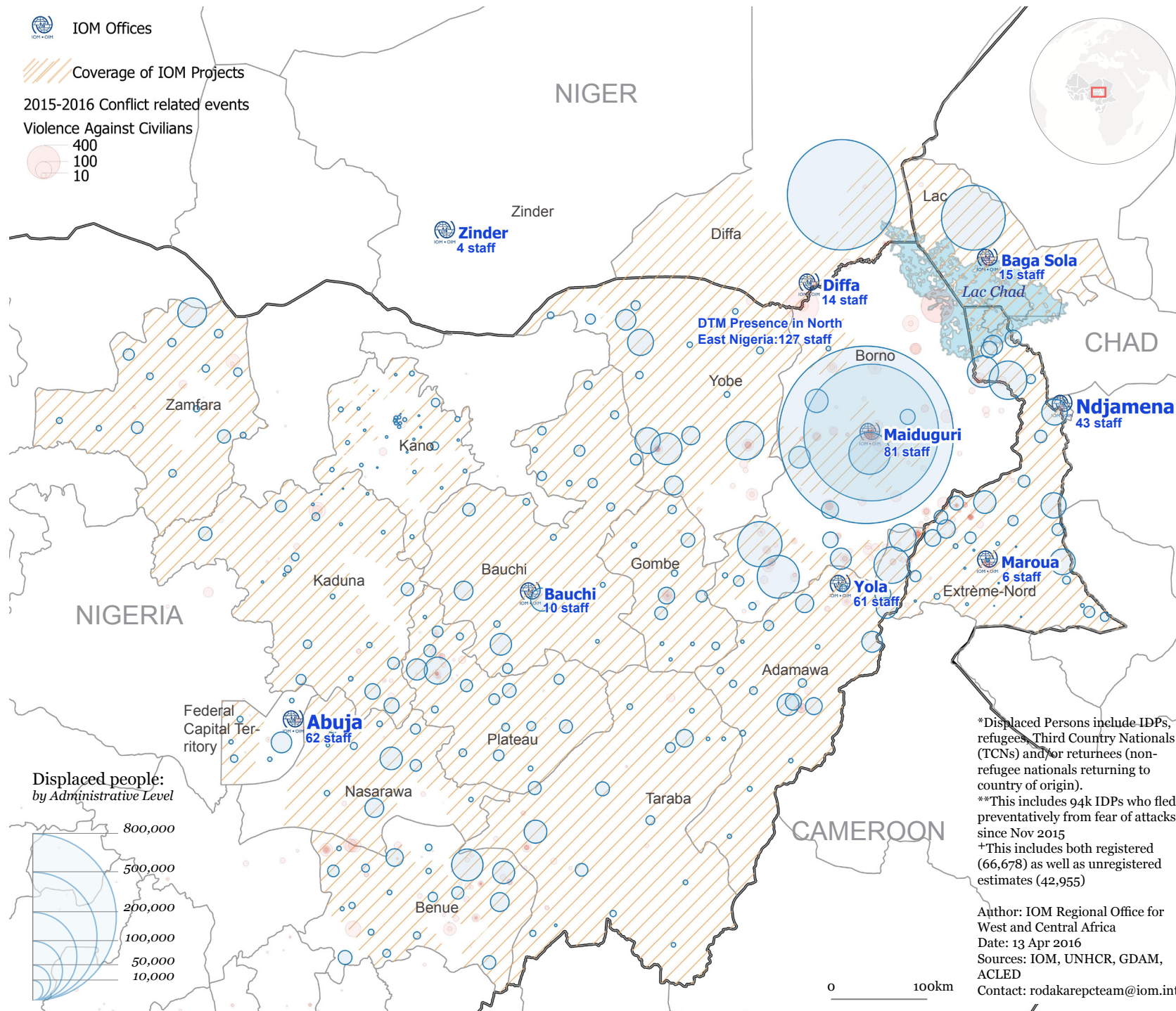
IDPs 74% Ref. 15% Ret 10%

71,368 Beneficiaries Assisted

IOM is co-lead of CCCM and Shelter/NFI clusters (w/ UNHCR)

IOM activities:

- DTM (4th Round - Apr 2016)
- Emergency Shelter and NFI Distribution
- Voluntary Relocation Support
- Psychosocial Support



*Displaced Persons include IDPs, refugees, Third Country Nationals (TCNs) and/or returnees (non-refugee nationals returning to country of origin).

**This includes 94k IDPs who fled preventatively from fear of attacks since Nov 2015

*This includes both registered (66,678) as well as unregistered estimates (42,955)

Author: IOM Regional Office for West and Central Africa

Date: 13 Apr 2016

Sources: IOM, UNHCR, GDAM, ACLED

Contact: rodakarepcteam@iom.int