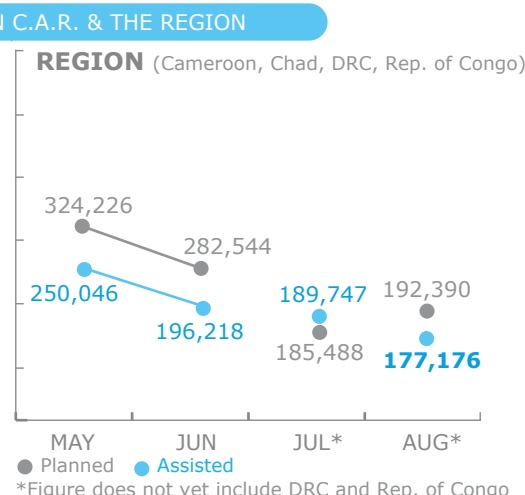
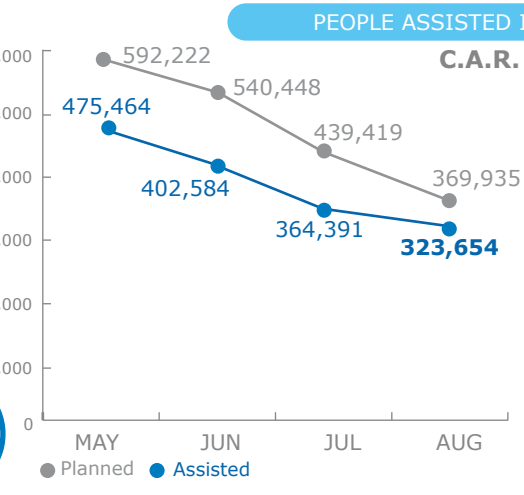
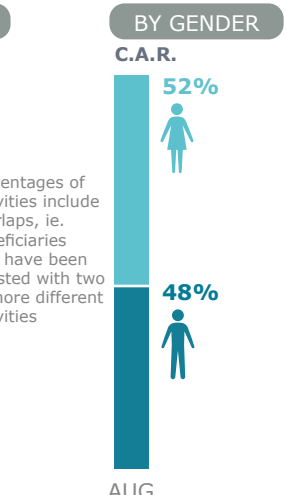
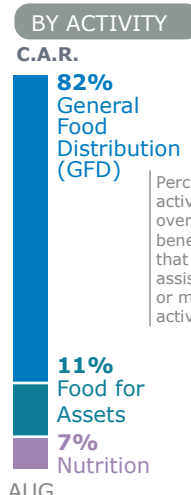


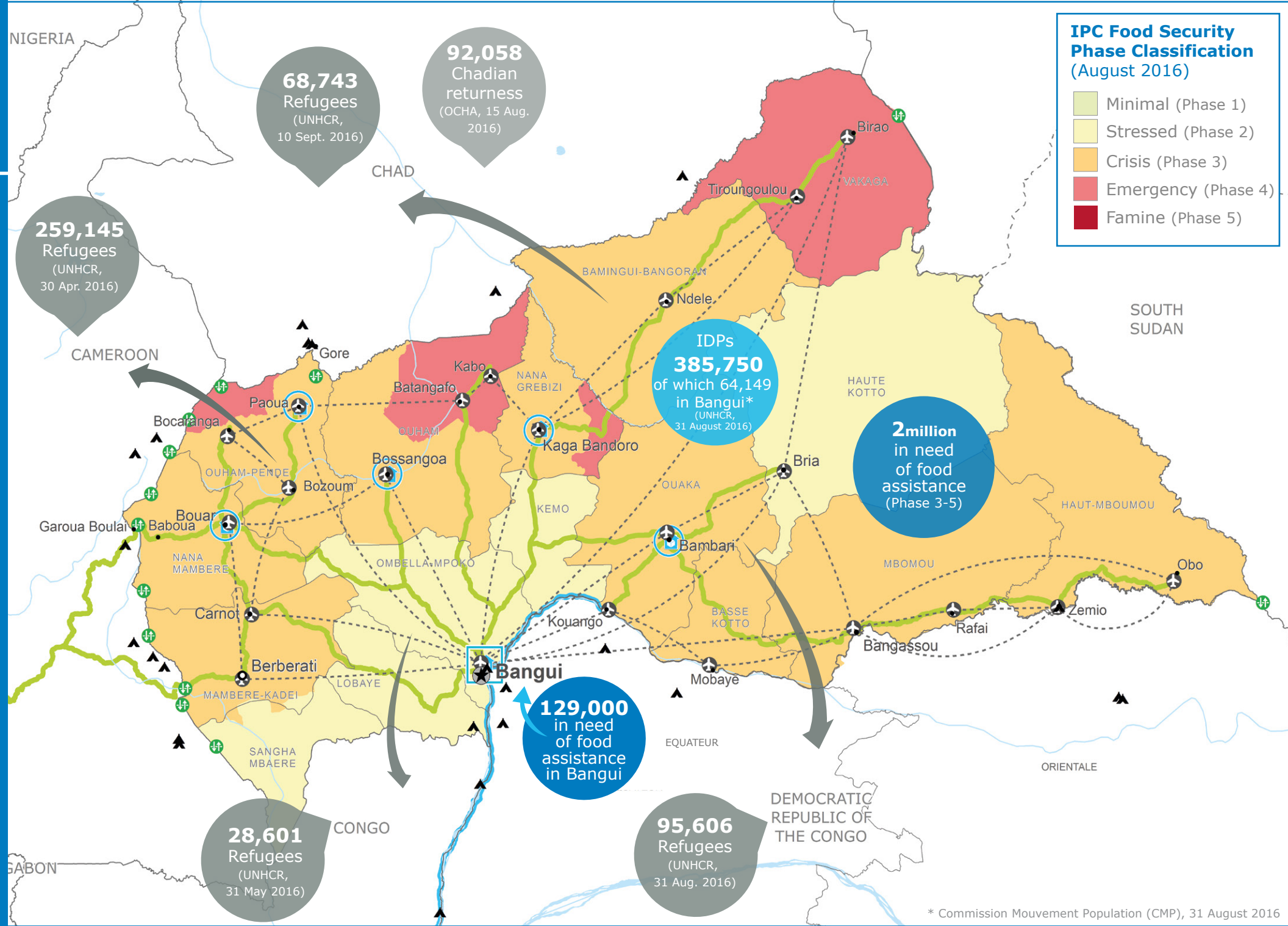
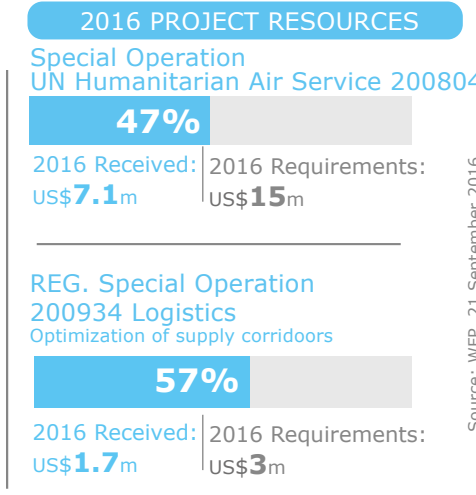
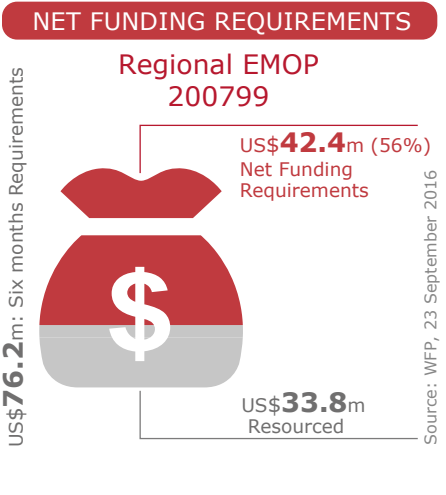
BENEFICIARIES
Reg. Emergency Operation 200799



OPERATIONAL PROFILE

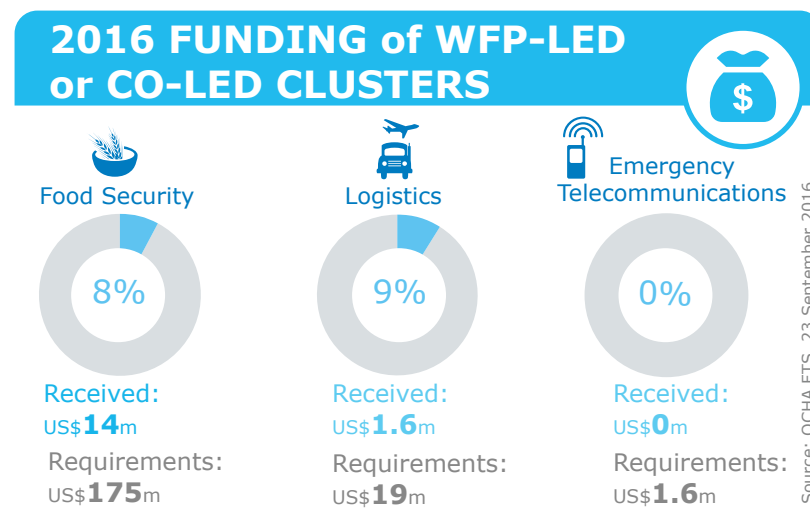
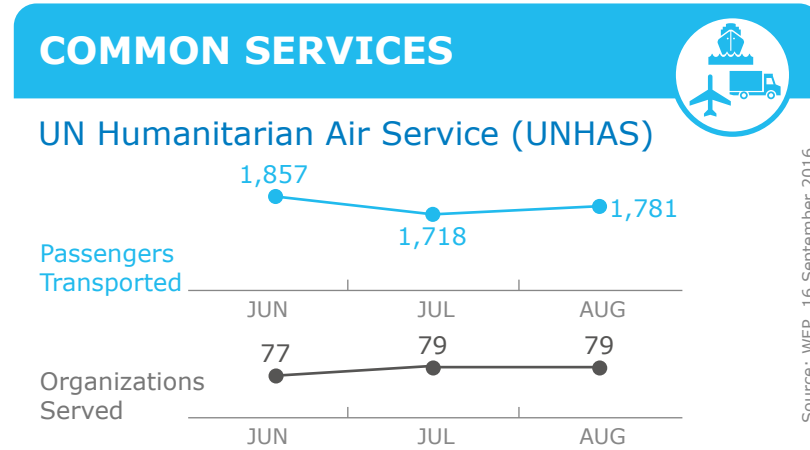


FUNDING
Sep 2016 - Aug 2017



OPERATIONAL CHALLENGES

Insecurity	Humanitarian Access
Supply Route Limitations	Resources



WFP LEVEL 2 EMERGENCY
SINCE 02 JUNE 2015

For more information, see the **SITUATION REPORT** and **COUNTRY BRIEF** www.wfp.org/countries/central-african-republic

2A REGIONAL EMOP 200799
<http://documents.wfp.org/stellent/groups/public/documents/ep/WFP284303.pdf>

Produced by the WFP **Operations Centre (OPSCEN)** jointly with Country Office and Regional Bureau Dakar

This dashboard is based on best available information at the time of production. Future updates may vary as new information becomes available.

- Country Office
- Sub Office
- Field Office
- Warehouse
- Refugee Camp
- Road Supply Route
- Waterway Supply Route
- UNHAS Connection
- UNHAS Route
- Border Crossing Point
- National Capital
- Major Town
- Intermediate Town
- Small town
- International Boundary
- Province boundary
- River
- Surface Waterbody

Sources: WFP, UNGIWG, GAUL, GLCSC, IPC, OCHA, UNHCR.

The designations employed and the presentation of material in the map(s) do not imply the expression of any opinion on the part of WFP concerning the legal or constitutional status of any country, territory, city or sea, or concerning the delimitation of its frontiers or boundaries.

© World Food Programme 2016