

Situation in numbers



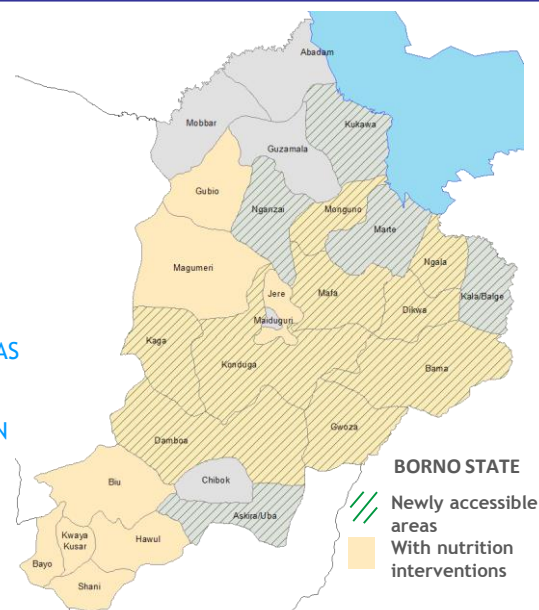
1.4 MILLION CHILDREN CURRENTLY DISPLACED ACROSS THE LAKE CHAD BASIN²

2.6 MILLION PEOPLE CURRENTLY DISPLACED ACROSS THE LAKE CHAD BASIN²

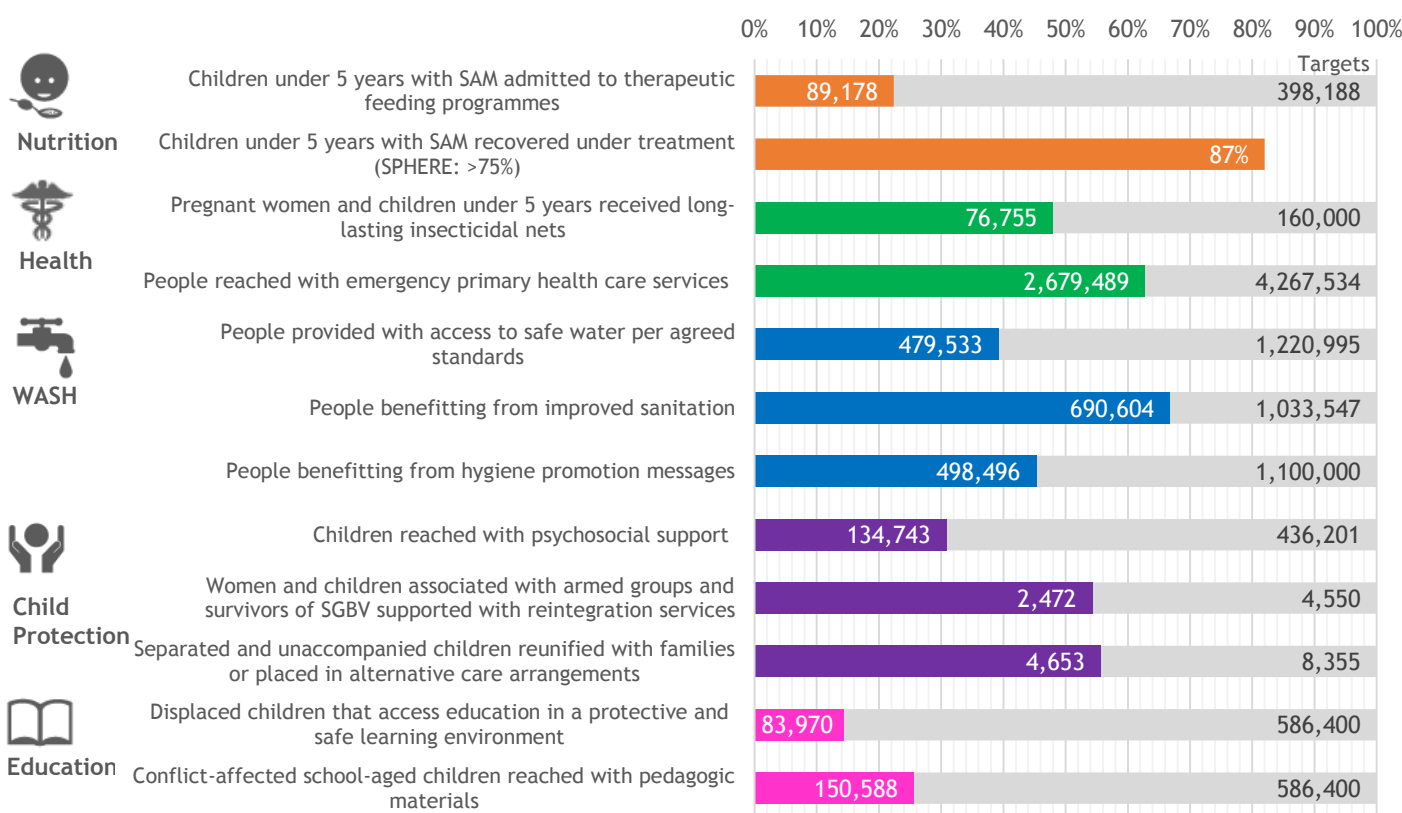
1.8 MILLION PEOPLE CURRENTLY INTERNALLY DISPLACED IN NORTHEAST NIGERIA¹

2.2 MILLION PEOPLE LIVING IN INACCESSIBLE AREAS IN NORTHEAST NIGERIA³

398,188 CHILDREN WITH SEVERE ACUTE MALNUTRITION IN BORNO, YOBE AND ADAMAWA STATES³



UNICEF Results for children in northeast Nigeria against 2016 targets⁴



UNICEF Response highlights

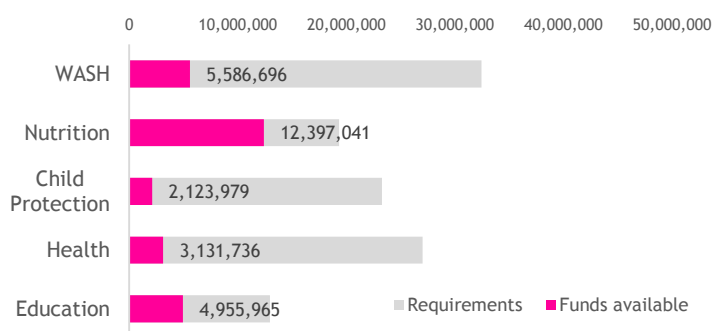
- 89,178 children with severe acute malnutrition (SAM) have been reached through UNICEF's Community Management of Acute Malnutrition (CMAM) program and to date, over 87% of the children who have received treatment have recovered.
- Nearly 2.7 million people have been reached with emergency integrated primary health care services.
- Over 5.8 million children were vaccinated against polio in the first round in Borno, Yobe, Adam The second round commenced in 10 LGAs in Borno State, including MMC, Jere and Mafa in southern Borno. Vaccination activities were carried out alongside nutrition screening in these 3 LGAs.
- Nearly 135,000 children have received psychosocial support, and 2,472 women and children associated with Boko Haram and victims of sexual and gender based violence have received care and support.
- Nearly 84,000 children have received access to education in a protective and safe learning environment, including 20 temporary learning spaces in newly accessible areas in Gwoza and Bama LGAs.

Sources: (1) IOM DTM Round XI, August 2016; (2) OCHA, September 2016; (3) UNICEF September 2016 (4) UNICEF 22-28 September 2016

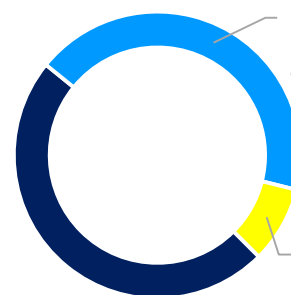


RESOURCE MOBILISATION: US\$ 115 million required for the critical needs

25% of needed funds available



\$55,600,000
For 1.2 million people living in Maiduguri, Jere and southern Borno



\$49,500,000
For 750,000 people living in newly liberated areas in 15 LGAs

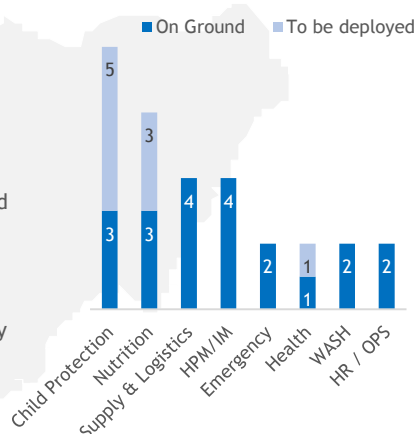
\$9,900,000
For Gujaba and Gulani in Yobe state

UNICEF Operational Response



HUMAN RESOURCES AND FIELD PRESENCE

- In Nigeria, Field offices in Borno and Bauchi, with staff of 17 and 27 staff respectively, and outreach to Yobe and Adamawa
- Field offices across respective borders in Diffa, Niger, Maroua, Cameroon, and Lake region, Chad to respond to needs of Nigerian refugees and IDPs as a result of the conflict
- Significant scale up of emergency staff underway with 31 surge missions to support the immediate response in Nigeria



On 11 September, an airlift of **\$1.3 million** of life-saving supplies was sent for internally displaced persons in northeast Nigeria. The flight included:

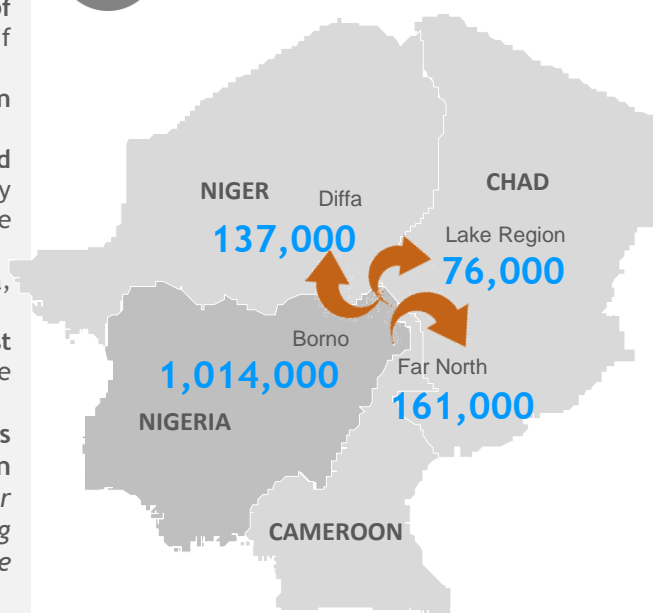
- 1,600** health kits to meet the needs of nearly **1 million** people for 3 months
- 1,600** water, sanitation and hygiene (WASH) dignity kits including water storage cans and basic menstrual hygiene products for **80,000** women and girls for 3 months

Urgent actions required for children

- In northeast Nigeria, **1 out of 5** children under-five years of age are at risk of death from severe acute malnutrition if they do not receive treatment.
- In northeast Nigeria alone, an estimated **20,000** children have been separated from their families.
- Given the magnitude of the crisis, there is an urgent need to scale up humanitarian assistance. New areas previously unreachable in northeast Nigeria hosting 750,000 people have become accessible.
- 86** children have been used in 'suicide' attacks in Nigeria, Cameroon, Chad and Niger since 2014.
- 8 out of 10** displaced people are living in host communities. Even before the crisis began, these communities were already among the poorest in the world.
- Three years into the humanitarian response, the crisis remains underfunded and the basic needs of children and families continue to grow. Together with other partners, our teams are working in challenging circumstances but funding shortfalls and insecurity are preventing us from reaching all those in need.
- Across the Lake Chad Basin, UNICEF has received only **32%** of its 2016 funding requirements, including **25%** for its response in northeast Nigeria.



1.4 million children displaced across the Lake Chad Basin



8 in 10 displaced people are living in host communities

