

# SYRIA REFUGEE RESPONSE

## LEBANON North Governorate, Tripoli, Batroun, Bcharreh, El Koura, El Minieh-Dennieh, Zgharta Districts (T+5)

### Distribution of the Registered Syrian Refugees at the Cadastral Level

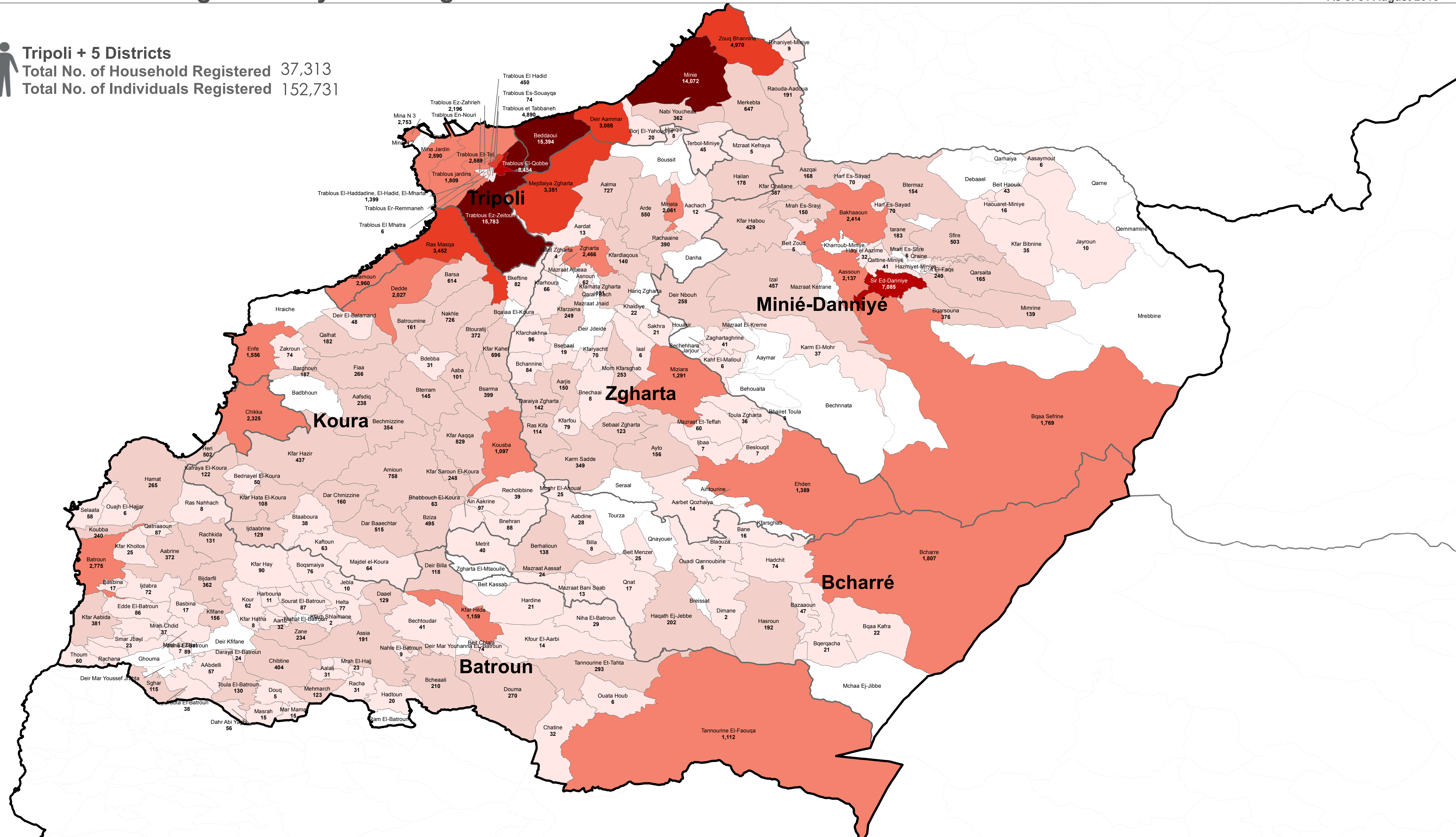
As of 31 August 2016



#### Tripoli + 5 Districts

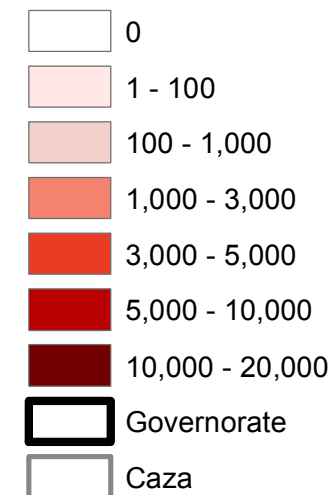
Total No. of Household Registered 37,313

Total No. of Individuals Registered 152,731



#### Legend

##### No. of Refugees per Cadastral



#### Notes

This map has been produced by the Inter-Agency Information Management Unit of UNHCR based on maps and material provided by the Government of Lebanon for operational purposes. It does not constitute an official United Nations map. The designations employed and the presentation of material on this map do not imply the expression of any opinion whatsoever on the part of the Secretariat of the United Nations concerning the legal status of any country, territory, city or area or of its authorities, or concerning the delimitation of its frontiers or boundaries.

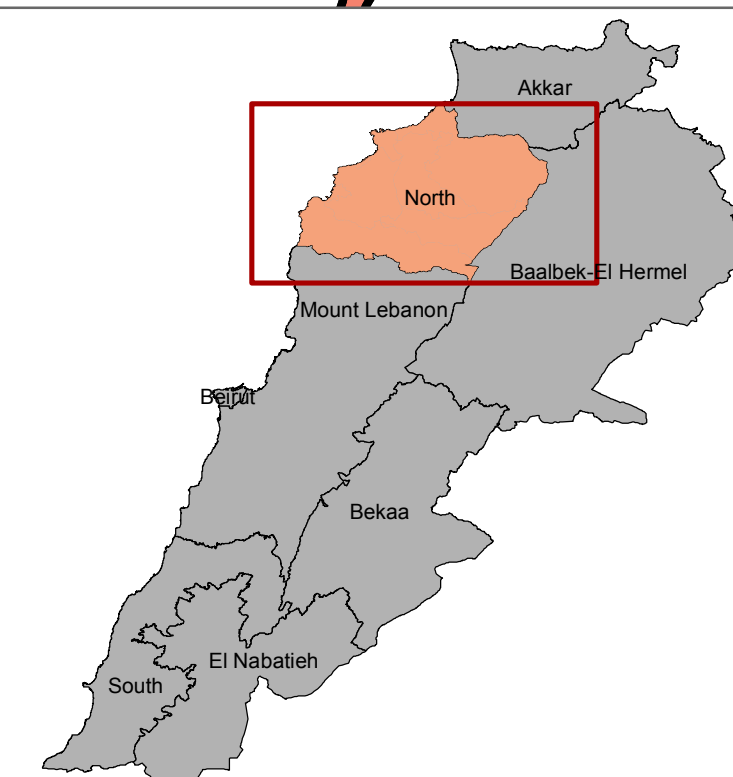
Data Sources:  
- Lebanese Border, Caza and Cadastral Boundaries: NPMPLT 2005.  
- Geographic Projection WGS 1984

Registered Refugees Figures by UNHCR as of 31 August 2016.  
For more information contact Rana G. Ksaifi at ksaifi@unhcr.org

GIS and Mapping by UNHCR. For Information and updates  
contact Jad Ghosn: ghosn@unhcr.org  
Maroun Sader: sader@unhcr.org

NPMPLT: National Physical Master Plan for the Lebanese Territory

The No. indicates the registered refugees at the cadastral level



#### LOCATION DIAGRAM

