



**2016/17
WINTER**
Nov 2016-Mar 2017

INTER-AGENCY WINTER SUPPORT UPDATE

31 January 2017

Contact Information:

Khalil Dagher - dagherk@unhcr.org ;



HIGHLIGHTS

Basic Assistance partners have reached more than 220,000 households through different assistance modalities. More than \$110 million was injected in local markets through cash assistance for winter between November 2016 and January 2017.

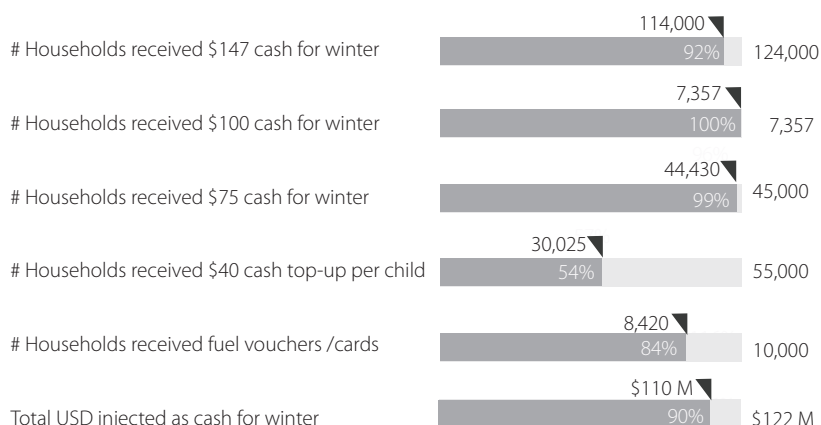
More than 174,207 households received cash for winter assistance based on harmonized packages and targeting criteria. An additional 45,828 households received in kind items such as clothing kits, stoves, blankets, as well as fuel vouchers where cash is not possible. Agencies plan to conclude distributions by end of March 2017.



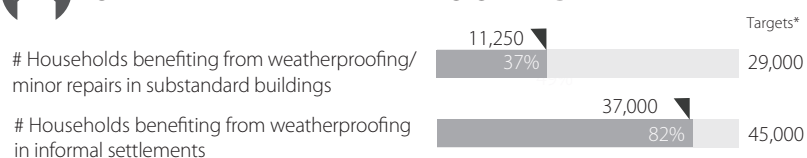
CASH & VOUCHER ASSISTANCE

progress as of 31 January 2016

Progress Targets



SHELTER - WEATHERPROOFING

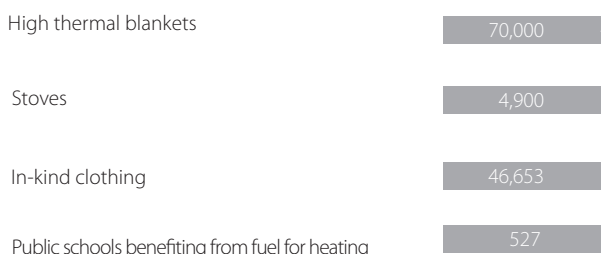


* 2016 LCRP Shelter Targets and Achievements



CORE RELIEF ITEMS & CLOTHES*

* Distribution of items is based on ad-hoc needs



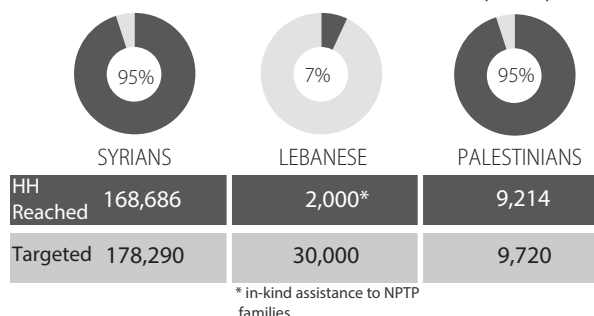
TARGETED POPULATION



Targeted
Reached

Households
265,260
220,035

% REACHED BY POPULATION GROUP (cash)



TOTAL
FUNDING
Required

\$125M*

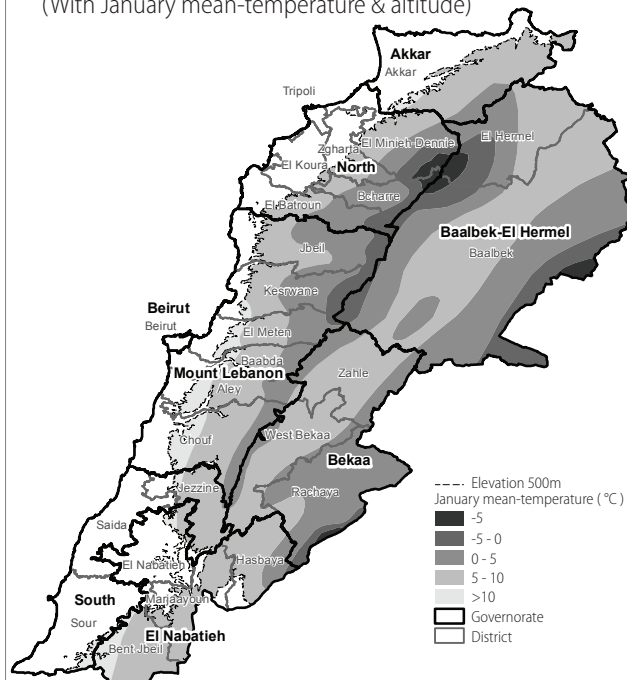
*Excluding Shelter

Secured \$119M

Gap \$6M

LEBANON MAP

(With January mean-temperature & altitude)



WINTER CASH PACKAGES / CRITERIA

		SYR	LEB	PAL
Full winter assistance cash package	\$147 x 4 months	●		●
Altitude based winter cash package	\$100 x 4 months			●
Top-up winter assistance cash package	\$75 x 4 months	●		
One-off cash for winter top-up (clothing)	\$40/child	● ¹	● ²	● ³
Fuel cards in lieu of cash (mainly Aarsal)	\$100 x 4 months	●		

¹ Syrian refugees in informal settlements / collective shelters
² NPTP beneficiaries
³ Palestine refugees from Syria

Partners
Basic Assistance
& Shelter

MoSA, CISP, CHF, CLMC Lebanon, CONCERN, Dar El Fatwa, Dorcas, DRC, GVC, IOM, Lebanese Red Cross, Makhzoumi, MEDAIR, NRC, PU-AMI, QRC, SCI, Solidar Suisse, Solidarités, UNHCR, UNICEF, UNRWA