



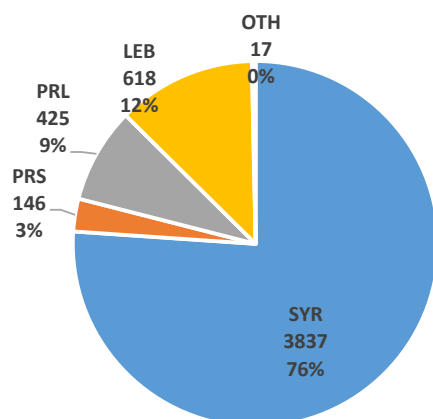
**OUTCOME 5: Boys & girls at risk and survivors of violence, exploitation and abuse have access to an improved and equitable prevention & response**

**Output 5.2: Displaced and host community boys & girls at risk or survivors of violence have access to an integrated package of quality prevention and response services**

Funding agencies: UNICEF, UNHCR, OCHA, independent sources.

Information management: Vicken Ashkarian, vashkarian@unicef.org

**Indicator 5.2.2: # of boys & girls accessing CP & focused PSS**

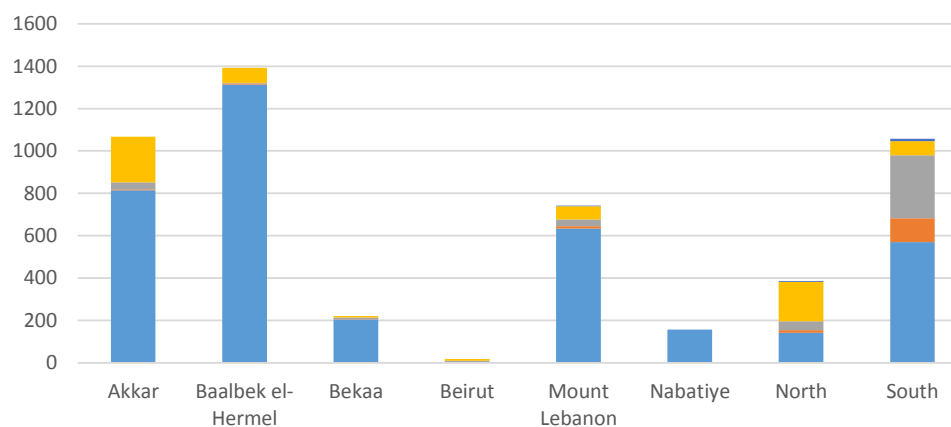


Male	Female
53%	47%

Activities per age groups*		
0 - 5	6 - 11	12 - 17
46	2140	1570

\* Disaggregation by age excludes data from UNICEF Pal. Prog.

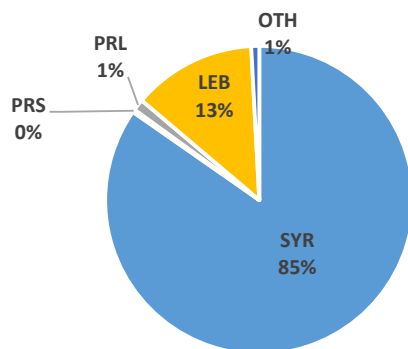
Disaggregations		
Cohorts	Sex	Risk type
5043	5023	1667



Governorates							
Akkar	B/H	Bekaa	Beirut	ML	Nab	Nt	St
1067	1393	221	19	742	158	386	1057

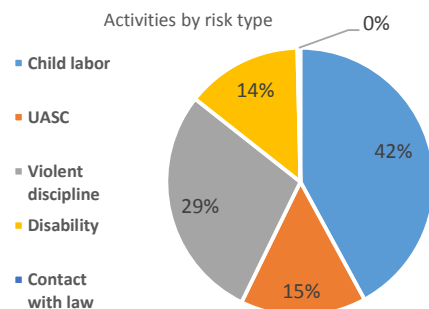
**Partners:** DRC, DRC/LRC, Intersos, KAFA, MAP, Mercy Corps, Mouvement Social, SaJ, TdH - It, TdH - L, WVI, UNRWA.

### Indicator 5.2.3: # of boys & girls assisted through CP case management services

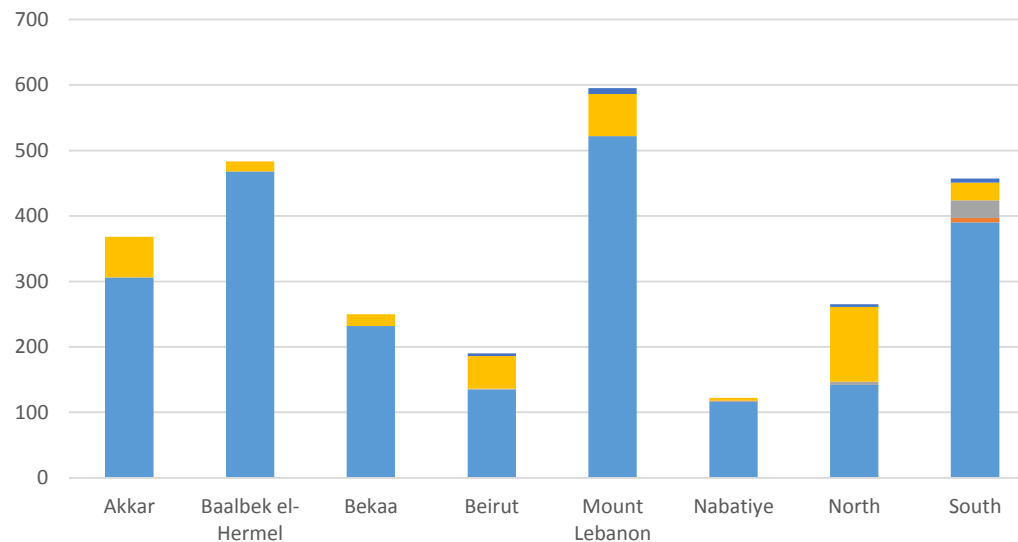


Male	Female
60%	40%

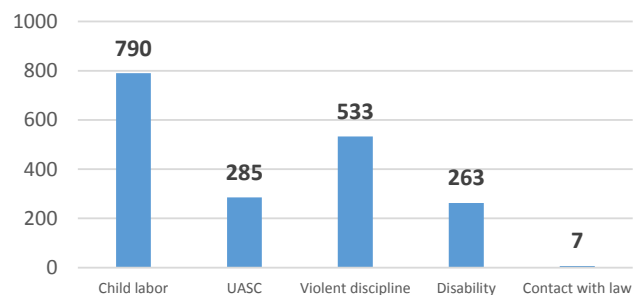
Activities per age groups		
0 - 5	6 - 11	12 - 17
319	863	1545



Disaggregations			
Cohorts	Sex	Age	Risk type
2730	2710	2727	1878

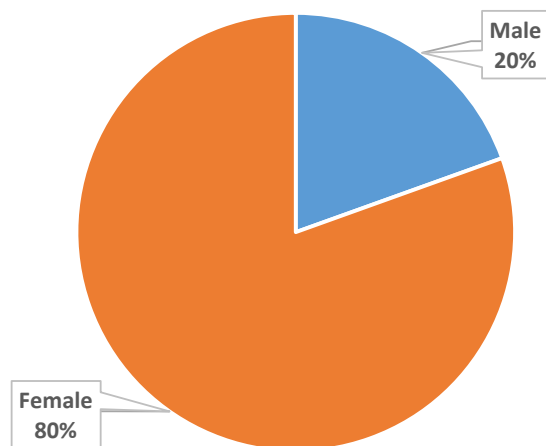


Governorates							
Akkar	B/H	Bekaa	Beirut	ML	Nab	Nt	St
368	483	250	190	595	122	265	457

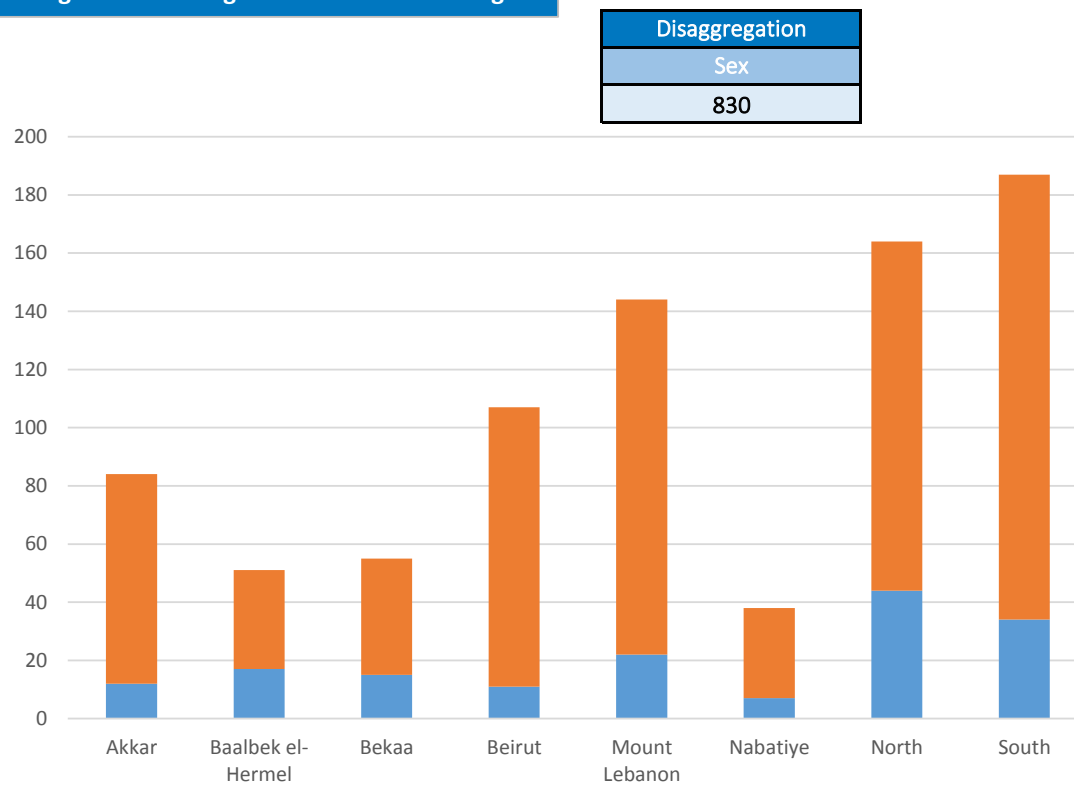


**Partners:** BZRD, DRC, Himaya, Intersos, IRC, KAFA, Makhzoumi Foundation, Mercy Corps, Mouvement Social, SCI, TdH - It, TdH - L, WCH.

**Indicator 5.2.4: # of partners and government staff provided with general training on CP and children's rights**



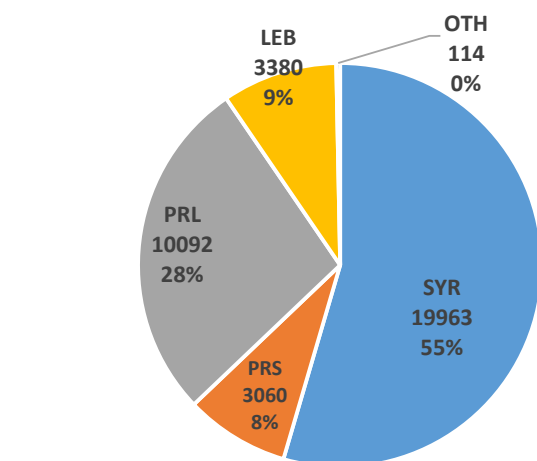
**Partners:** IRC, DRC, DRC/LRC, Intersos, Mercy Corps, Mouvement Social, RtP, SCI, TdH - It, TdH - L, WCH.



Governorates							
Akkar	B/H	Bekaa	Beirut	ML	Nab	Nt	St
84	51	55	107	144	38	164	187

Output 5.3: Vulnerable children, families and communities supported to promote practices that protect them.

Indicator 5.3.2: # of boys & girls accessing CP prevention (for boys & girls: community based PSS)

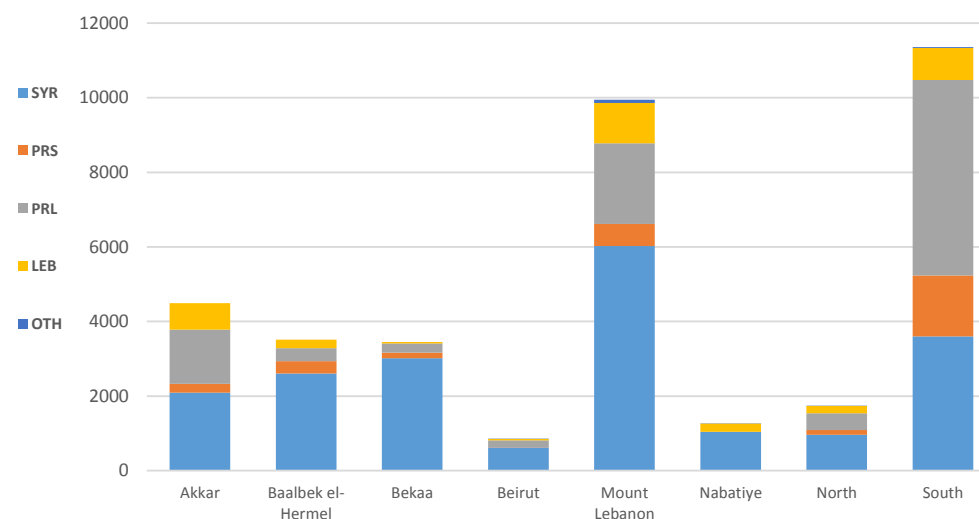


Male	Female
47%	53%

Activities per age groups		
0 - 5	6 - 11	12 - 17
1061	13661	4388

\* Disaggregation by age excludes data from UNICEF Pal. Prog.

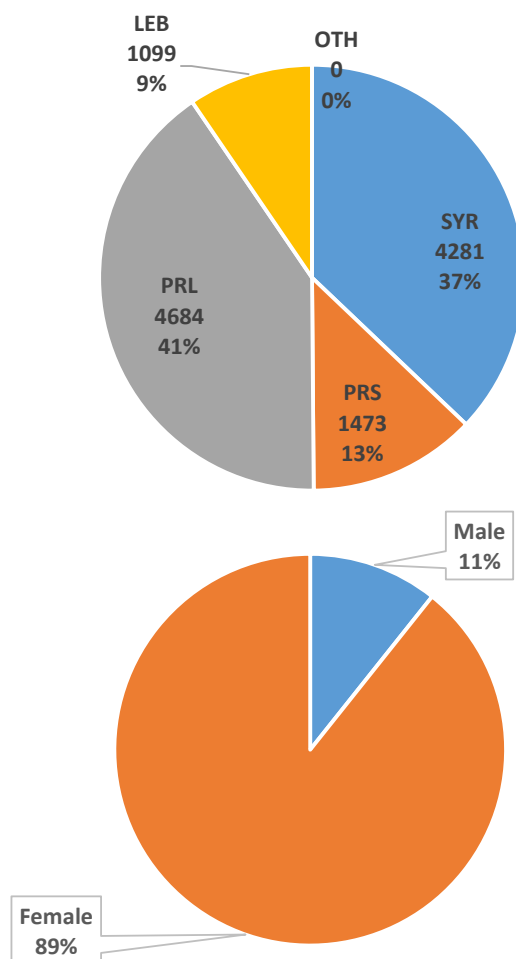
Disaggregations	
Cohorts	Sex
36609	36552



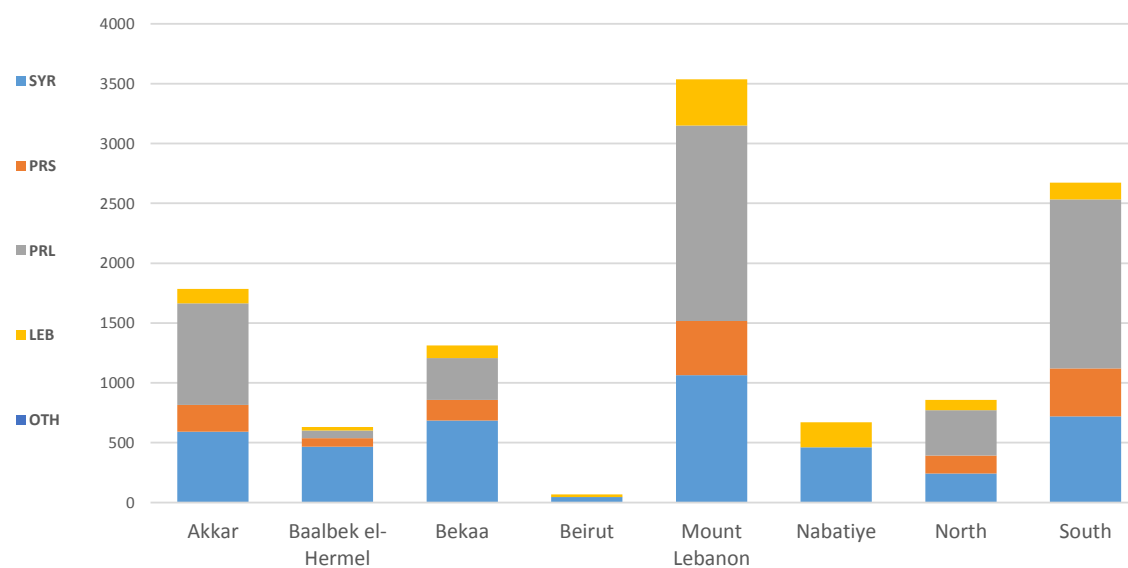
Governorates							
Akkar	B/H	Bekaa	Beirut	ML	Nab	Nt	St
4493	3509	3451	851	9945	1263	1737	11360

**Partners:** AMEL, ARCPA, Beyond, DRC, DRC/LRC, Himaya, Intersos, IR, IRC, KAFA, Makhzoumi Foundation, MAP, Mercy Corps, RtP, SaJ, SCI, SIF, TdH - It, TdH - L, WCH, WVI, YNCA .

### Indicator 5.3.3: # of caregivers accessing CP prevention (caregivers' programs)



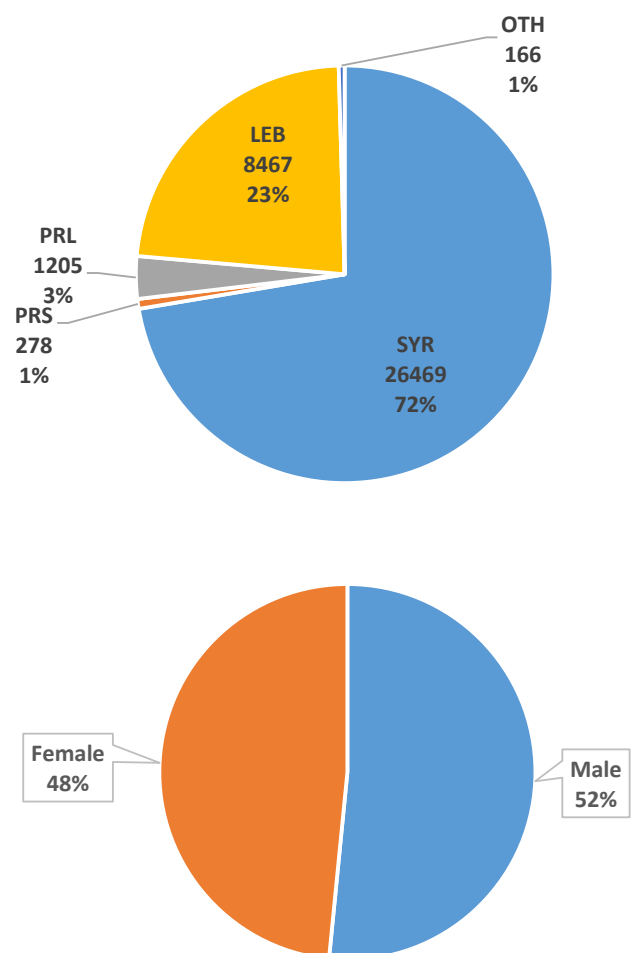
Disaggregations	
Cohorts	Sex
11537	11723



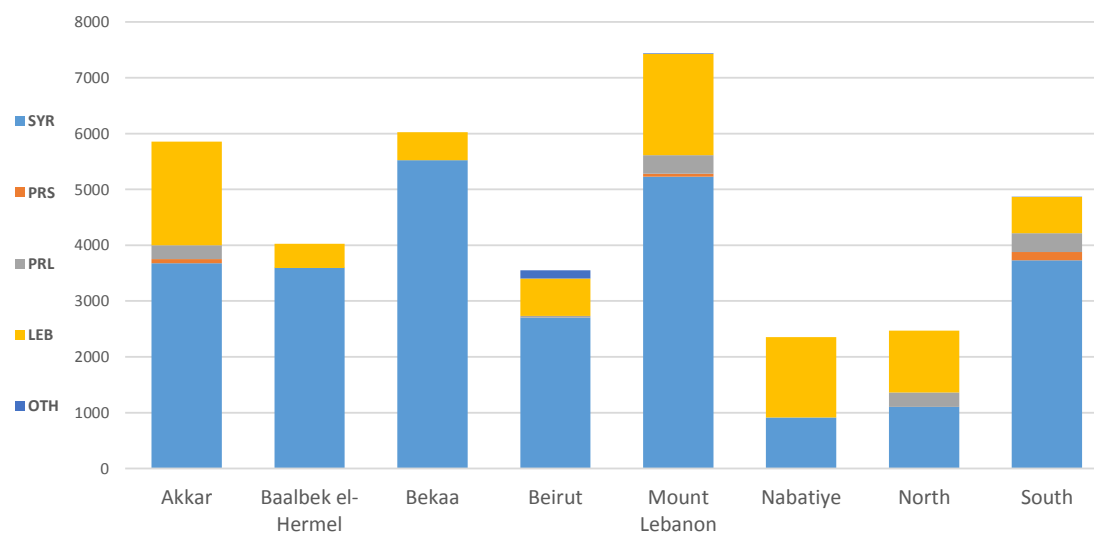
Governorates							
Akkar	B/H	Bekaa	Beirut	ML	Nab	Nt	St
1786	632	1313	68	3536	671	857	2674

**Partners:** AMEL, ARCPA/AI-Jana, BZRD, DRC, DRC/LRC, Intersos, IR, IRC, KAFA, MAP, Makhzoumi Foundation, Mercy Corps, Mouvement Social, Saj, SCI, SIF, TdH - It, TdH - L, WVI, YNCA.

# Indicator 5.3.4: # of girls & boys reached on key CP issues



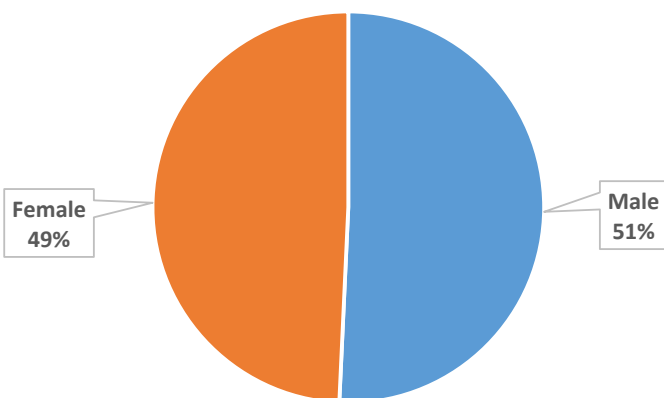
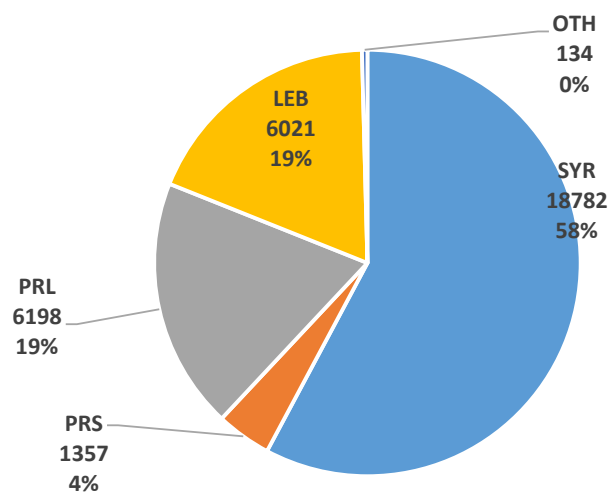
Disaggregations		
Cohorts	Sex	Age
36585	34654	32131



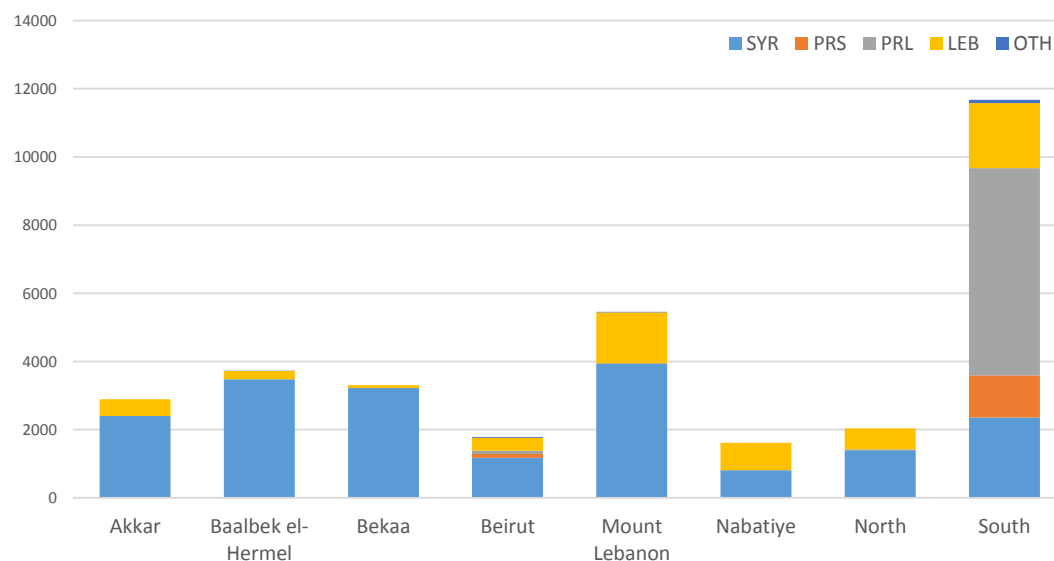
Governorates							
Akkar	B/H	Bekaa	Beirut	ML	Nab	Nt	St
5857	4023	6025	3553	7437	2354	2469	4867

**Partners:** AMEL, DRC, DRC/LRC, Himaya, Intersos, IRC, KAFA, Makhzoumi Foundation, Mercy Corps, RtP, SaJ, SCI, SIF, TdH - It, TdH - L, WCH, WVI,

Indicator 5.3.5: # of caregivers reached on key CP issues.



Disaggregations	
Cohorts	Sex
32492	31470



Governorates							
Akkar	B/H	Bekaa	Beirut	ML	Nab	Nt	St
2895	3725	3311	1783	5456	1611	2034	11677

**Partners:** AMEL, BZRD, DRC, DRC/LRC, Himaya, Intersos, IRC, KAFA, Makhzoumi Foundation, Mercy Corps, Mouvement Social, RtP, SaJ, SCI, SIF, TdH - It, TdH - L, WCH, WVI, YNCA.



**OUTCOME 5: Boys & girls at risk and survivors of violence, exploitation and abuse have access to an improved and equitable prevention & response**

**Child Protection - All activities  
Progress to target**

