

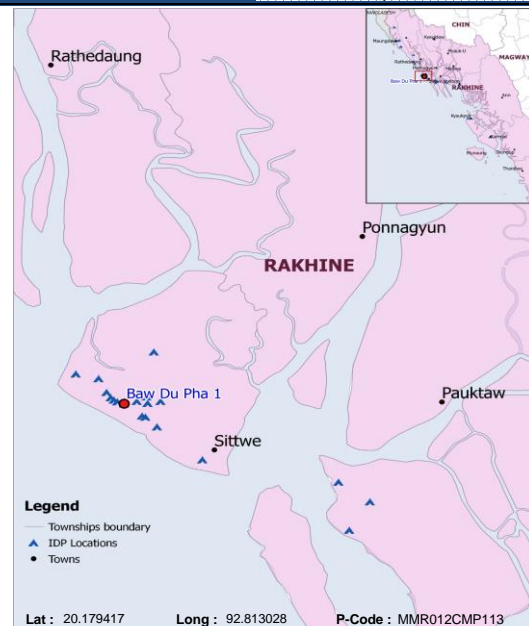
CCCM SITE MONITORING: Baw Du Pha 1 Camp

March-2017

Township: Sittwe (Rakhine, MYANMAR)

Geographic Data: Vil. Tract / Town : Khaung Doke Kar

Village/Ward : Baw Du Hpa

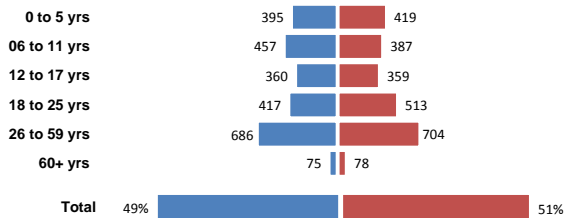


Camp Management or Focal Point Agency: DRC

Demographic data

4,850
people

1,011
households



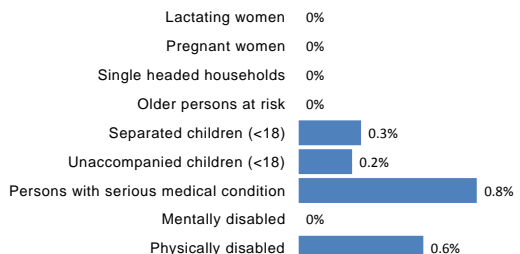
Vulnerabilities data

49%
children

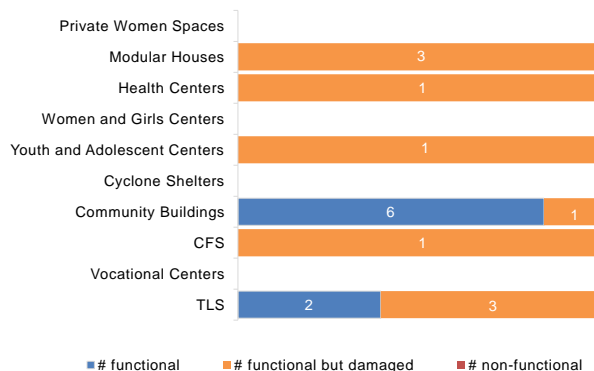
3%
elderly

8
new borns

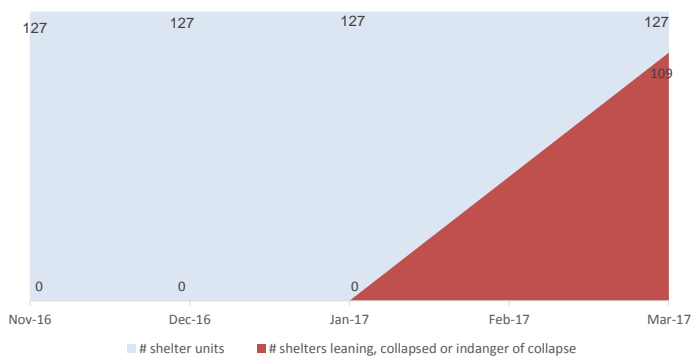
3
deaths



Community infrastructure damage



Shelter rehabilitation and repair



Sector Overview



| | | |
|------------------------------|---------------------------------------|---|
| CCCM | # of coordinations meetings with CMCs | 1 |
| | # of meetings with service providers | 1 |
| Community Based Group | # of meetings held | |
| | Men's Sports Club | 2 |
| | Camp Women's Association | 2 |



| | | |
|---------------|---------------------------------------|-----|
| Health | Health facility presence | Yes |
| | # of NGO clinics | 1 |
| | # of Government clinics | 1 |
| | IDPs access to nearby health facility | Yes |

NFI

| | | |
|------------|---|---|
| NFI | # of HHs receiving WaSH consumables (soap, towel) | 0 |
| | # of HHs receiving Sanitary Kits / Dignity Kits | 0 |



| | | |
|----------------|---|---------|
| Shelter | # of temporary shelters (8 – 10 units) | 127 |
| | # of informal / makeshift shelters | 2 |
| | Date of the last Shelter Cluster assessment | No Info |



| | Functional | Non-functional |
|------------------------------------|------------|----------------|
| # Lightings at Latrines | 9 | 3 |
| #Lighting at other areas of camps | No Info | 0 |
| WASH | | |
| # of Hand Pumps | 52 | 5 (9%) |
| # of Ponds | No Info | No Info |
| # of Latrines | 212 | 58 (21%) |
| # of Solid Waste Management System | No Info | No Info |



Service Delivery Actors in the Camp

