



CCCM SITE MONITORING: Thae Chaung Camp


Township: Sittwe (Rakhine, MYANMAR)



April-2017

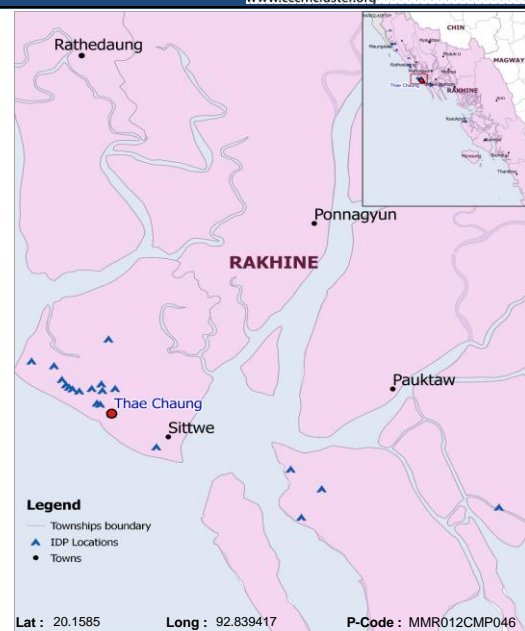
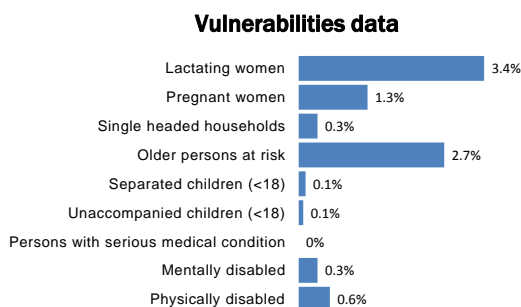
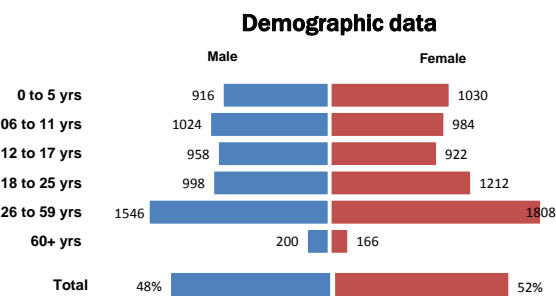
Geographic Data: Vil. Tract / Town : Bu May

Village/Ward : Thea Chaung Ku Lar

 
11,764 people 2,145 households

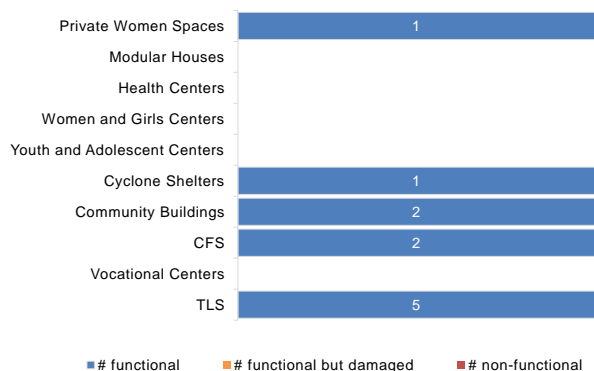
 
50% children 3% elderly

 
11 new borns 1 deaths

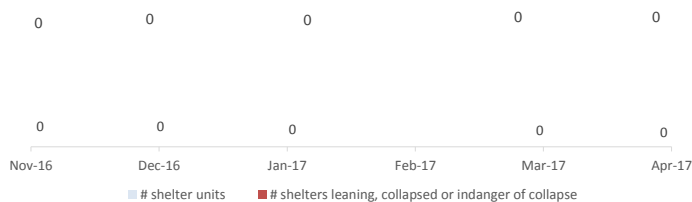


Camp Management or Focal Point Agency: LWF

Community infrastructure damage



Shelter rehabilitation and repair



Sector Overview



CCCM	# of coordinations meetings with CMCs	1
	# of meetings with service providers	1
Community Based Group		# of meetings held
	Youth Development Group (YDG)	2
	Women Development Group (WDG)	2
	Women Committee	2
	Food Management Committee (FMC)	2
	Fire Safety Volunteer Group (FSVG)	2
	Child Development Group (CDG)	1
	Camp Management Committee (CMC)	1



Health	Health facility presence	Yes
	# of NGO clinics	0
	# of Government clinics	1
	IDPs access to nearby health facility	Yes

NFI

# of HHs receiving WaSH consumables (soap, towel)	1137
---	------



Shelter	# of temporary shelters (8 – 10 units)	0
	# of informal / makeshift shelters	2376
	Date of the last Shelter Cluster assessment	28-Apr-17



	Functional	Non-functional
# Lightings at Latrines	0	0
#Lighting at other areas of camps	0	0
WASH	# of Hand Pumps	52
	# of Ponds	0
	# of Latrines	208
	# of Solid Waste Management System	1



Service Delivery Actors in the Camp

