

# SUDAN: SOUTH SUDANESE REFUGEE EMERGENCY

1-15 May 2017

## POPULATION & OPERATIONAL UPDATE

### KEY FIGURES

**417,489**

South Sudanese refugees in Sudan since December 2013

**136,962**

South Sudanese refugees newly arrived in 2017.

**1,903**

Average daily arrival rate in May 2017.

**921**

New arrivals per day in May to White Nile state

### FUNDING

**Less than 10% funded**

**Total funds needed:  
USD 221.7 million**

\*as per the revised 2017 Regional Refugee Response Plan (RRRP)

### PRIORITIES

- Provision of immediate life-saving support to new arrivals, including food, health, nutrition and non-food item assistance.
- Scale-up of health and nutrition screening services at across key border-entry points. Expansion of referral mechanisms and nutrition treatment monitoring.
- UNHCR-COR biometric registration at refugee sites and settlements.
- Expansion of WASH services, focusing on water supply and latrines in sites hosting new arrivals, especially in White Nile, South Kordofan and East Darfur.

### NEW ARRIVALS

- SUDAN NOW HOSTS OVER 400,000 SOUTH SUDANESE REFUGEES** – The total number of South Sudanese refugees in Sudan has surpassed 400,000 with the arrival of over 28,000 refugees in the first two weeks of May. Nearly 137,000 refugees have arrived in 2017 to date.

STATE	NEW ARRIVALS 2017					TOTAL (1 JAN – 15 MAY 2017)
	JAN	FEB	MAR	APR	MAY (1-15)	
White Nile	3,801	5,901	15,363	11,576	13,811	50,452
East Darfur	4,300	2,975	26,208	3,272	5,223	41,978
South Kordofan	480	8,185	6,661	3,398	4,546	23,270
West Kordofan	1,708	5,462	1,050	2,110	423	10,753
South Darfur	709	2,324	--	2,731	4,545	10,309
North Darfur	--	--	--	200	--	200
<b>TOTAL</b>	<b>10,998</b>	<b>24,847</b>	<b>49,282</b>	<b>23,287</b>	<b>28,548</b>	<b>136,962</b>

- NEARLY 20,000 SOUTH SUDANESE REFUGEES ARRIVE IN WHITE NILE AND SOUTH KORDOFAN IN FIRST HALF OF MAY** – Since the end of April, nearly 20,000 refugees have arrived in Sudan as a result of the ongoing hostilities in Kodok, Upper Nile State of South Sudan. The influx of 13,645 refugees in White Nile, and 5,261 in South Kordofan has put additional pressure on service provision in camps and settlement sites, prompting UNHCR and partners to step efforts to achieve minimum emergency standards as quickly as possible. In the interim, some of the most critical gaps in reception centres, WASH, health, and non-food items are being immediately addressed. Contingency plans have also been developed to respond to possible further influxes. New arrivals have reported to humanitarian actors that as many as 40,000 – 50,000 refugees may also be on their way to White Nile from Attara, Fashouda, and Kaka, Upper Nile, South Sudan.
- 29,000 SOUTH SUDANESE REFUGEES REPORTED IN SOUTH DARFUR** – With the continuing influx of South Sudanese refugees from Western Bahr el Gazal in South Darfur, the population is now estimated at just over 29,000 in the State. New arrivals have primarily settled in Nyala town, with an estimated population of 15,000 in 12 locations. New arrivals have also been reported in the border areas so far in May, particularly in Kafaai Kingi (approximately 70km from El Radom), where 3,000 refugees arrived over a 5 day period. Authorities have also just reported the presence of approximately 1,500 refugees in Al Salam locality, including a mix of new arrivals and arrivals from 2016.

### OPERATIONAL UPDATES

- REFUGEE POPULATION IN EAST DARFUR REACHES NEARLY 95,000** – The current South Sudanese refugees population in East Darfur is now estimated at over 94,000 individuals (nearly 25,000 households). This includes 16,923 refugees (6,718 households) residing at the Kario refugee site; 5,181 refugees (1,312 households) at the Al Nimir site; and 52,065 refugees (11,797 households) living across 10 refugee settlement areas. There are an additional 20,500 refugees (5,125 households) residing at three entry points near the border, namely Kalama, Abu Simsim and Umazelti. There is an urgent need to establish additional reception facilities in the border areas, and UNHCR is currently working with COR to do this. Efforts to expand both Al Nimir and Kario sites are under discussion with authorities.

- **ADDITIONAL RECEPTION FACILITIES ESTABLISHED IN EL FERDOUS, EAST DARFUR** – UNHCR has established additional reception facilities adjacent to the existing one in El Ferdous reception centre in order to accommodate newly arrived refugees. Biometric registration of new arrivals will begin in El Ferdous at the end of May to get a better picture of the exact numbers, refugee profiles and vulnerability, including persons with specific needs (PSNs), and the overall needs including health, WASH and food.
- **INCREASE IN OUT-OF-SCHOOL CHILDREN REQUIRES URGENT ATTENTION IN WHITE NILE STATE** – As a result of the new influx to White Nile State, it is estimated that over 19,000 school-aged children are out of school across Al Waral and Um Sangour, the two main sites receiving new arrivals. As the start of the new school year is quickly approaching, funds are urgently needed to address gaps in the response for both new arrivals and old caseloads.
- **BIOMETRIC REGISTRATION OF SOUTH SUDANESE REFUGEES BEGINS IN SOUTH AND WEST KORDOFAN STATES** – On 1 May, UNHCR and COR began biometric registration of the estimated 53,415 refugees in South Kordofan, starting with the largest settlement in El Leri. A UNHCR and COR team was also deployed to El Meriam settlement in West Kordofan, where information campaigns began last week for the start of biometric registration. The population in West Kordofan is estimated at 33,641 refugees, with many more still to be verified. Completion of biometric registration is key component of refugee protection response by enabling the identification of vulnerable populations and improving the quality and targeting of assistance across sectors.
- **NFI DISTRIBUTION BEGINS IN EL MEIRAM, WEST KORDOFAN** – UNHCR is conducting a rapid vulnerability assessment of refugees and host community in El Meriam to facilitate NFI distribution for 5,000 new arrivals, including to some of the most vulnerable members of the host community.
- **NFI AND FOOD DISTRIBUTIONS BEGIN FOR SOUTH SUDANESE REFUGEES AND IDPS IN ALLAIT LOCALITY, NORTH DARFUR** – UNHCR, WFP, COR, HAC and NGO partners have begun distribution of NFIs and food to 7,800 South Sudanese refugees that arrived in 2016, and approximately 7,000 IDPs from East Darfur in Allait locality. The process is expected to conclude the third week of May. The displaced populations are scattered in villages across the locality, and are overlapping in some locations, which has promoted humanitarian actors to integrate some of the responses. Resources are currently being mobilized to the respond to additional needs, with a focus on basic service provision and shelter.



South Sudanese refugee women fill jerry cans with water from a hand pump installed at the Dar Batti settlement in South Kordofan.

*Photo Credit: Elnaiem, M. UNHCR/2017*

**Contact:**

Lindsey Amèrica-Simms, Associate Reporting Officer, [americas@unhcr.org](mailto:americas@unhcr.org)

**Links:**

UNHCR Sudan Operation for the South Sudan Situation: <http://data.unhcr.org/SouthSudan/country.php?id=204>

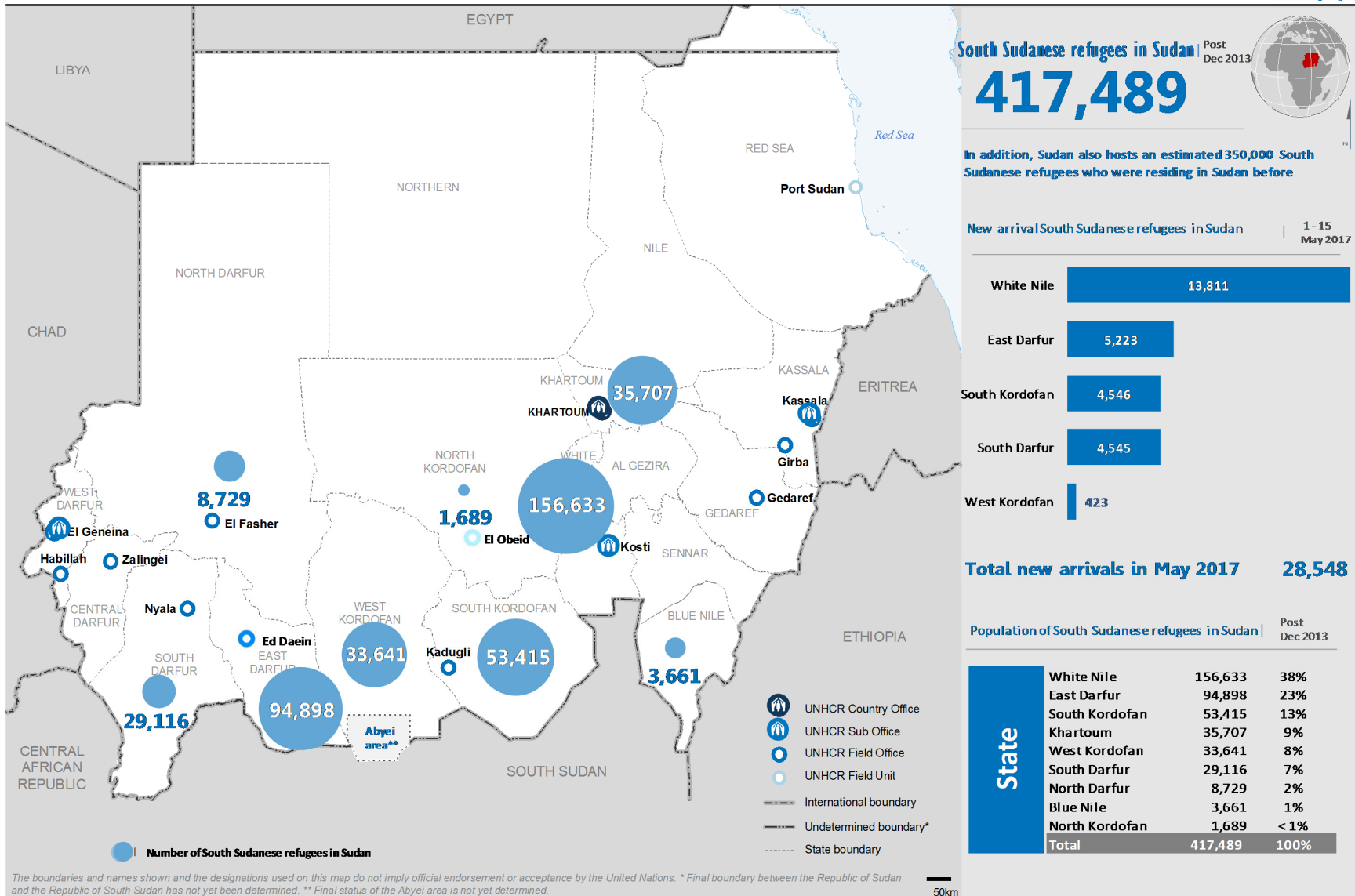
UNHCR in Sudan: <http://www.unhcr.org/afr/sudan>



# SUDAN

## Refugees from South Sudan

as of 15 May 2017



Feedback : wamalwa@unhcr.org, tuladhar@unhcr.org

Author : Registration Unit

Sources: COR, HAC, IOM, SRCS, UNHCR



# SUDAN - Refugees from South Sudan

as of 15-May-17

## KEY FIGURES

**417,489**

total refugees from South Sudan


**41%**

Living in camps


**49%**

Living in settlements


**88%**

Women and children


**136,962**

New Arrivals this year


**7%**

Living in urban areas


**3%**

Reception areas

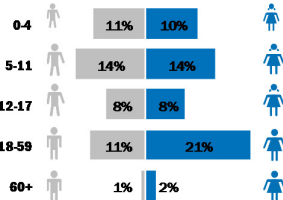

**56%**

Female


**28,548**

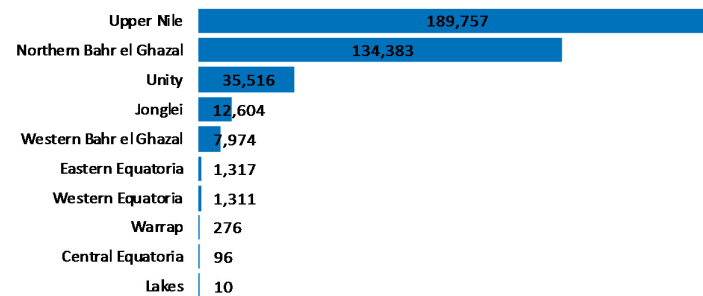
New Arrivals in May 2017

## Age gender breakdown


**13,483**

Other increase

## States of Country of Origin



## Summary of population change

Previous population

30-Apr-17

**375,719**

+


**28,548**

Newly registered arrivals in May

+


**13,483**

Other increases

-


**261**

Other decreases

Current Population

15-May-17

**417,489**

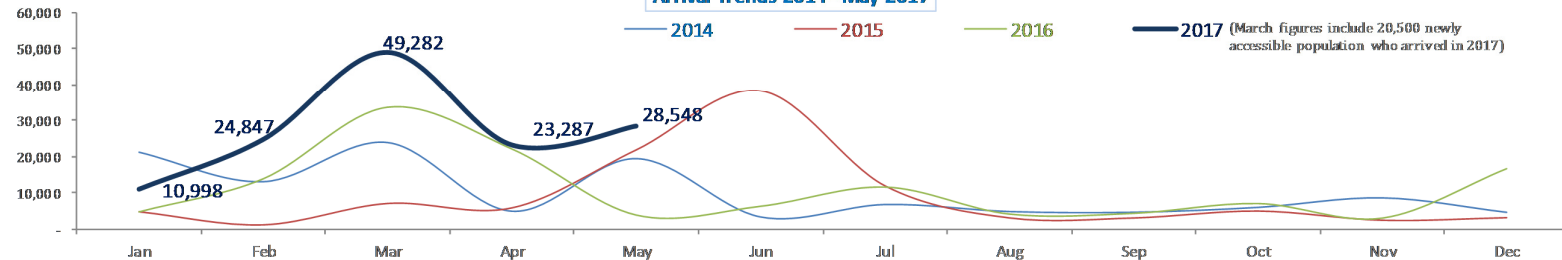
## Registration Status



■ Individually registered ■ Others

Individually registered are those recorded in proGres with biometric information

## Arrival Trends 2014 - May 2017



Feedback : wamalwa@unhcr.org, tuladhar@unhcr.org

Author: Registration Unit

Sources: COR, HAC, IOM, SRCS, UNHCR