

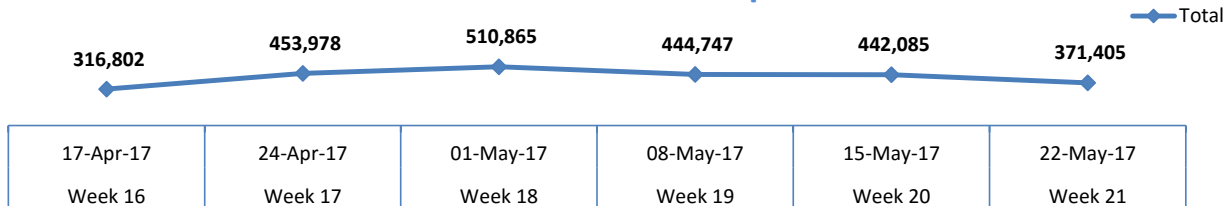
INTRODUCTION

The Site Tracker is an analysis tool developed to identify gaps in service delivery and assistance in IDP camps. This tool only covers camps where IOM CCCM Site Facilitators are deployed to support in camp management with partners soon to take over some areas. It enables stakeholders track each other's weekly activities and minimize duplication of efforts, in support of intra-sector coordination, to improve communication and to strengthen the quality of services delivered to IDPs. The DTM Site Tracker contributes to speed up the time of response by concerned partners when their intervention is needed and avoid unnecessary delays.

This report must not be misconstrued to represent the situation of all the IDP camps in North-Eastern Nigeria.

44 Sites in Jere, Monguno, Maiduguri M.C, Konduga, Bama, Kaga and Gwoza LGAs in Borno State in review this week: BO_S018, FARM CENTRE, BO_S020, GONI KACHALLARI PW, BO_S047, MUNA GARAGE EL BADAWE, BO_S014, TEACHERS VILLAGE, BO_S009, NYSC CAMP BORNO, BO_S068, FARIA GIDAN BLOCK CAMP, BO_S004, BALE GALTIMARI PRI SCHOOL, BO_S001, FORI PRIMARY SCHOOL, BO_S021, 250 HOUSING ESTATE, BO_S012, EYN CAMP, BO_S053, KAWARMELA, BO_S013, MOGCOLIS CAMP, BO_S016, FEDERAL TRAINING CENTER CAMP, BO_S113, EL-MISKIN CENTER, BO_S003, MADINATU CAMP, BO_S128, MUNA DA'ALTI 1A, BO_S129, MUNA DA'ALTI 1B, BO_S010, BAKASI CAMP, BO_S024, GARBA BUZU QRT, BO_S025, SABONGARI BUZU CAMP, BO_S057, GENERAL HOSPITAL BAMA, BO_S017, 400 HOUSING ESATE GUBIO, BO_S046, JAFRA SHAGARI CAMP, BO_S019, CAN CATHOLIC SECRETARIAT, BO_S040, DCC SHUWARI CAMP, BO_S058, BOARDING SCHOOL, BO_S110, BANKI CAMP, BO_S098, GOVERNMENT DAY SECONDARY SCHOOL (GDSS), BO_S059, GOVERNMENT GIRLS SECONDARY SCHOOL (GGSS), BO_S099, NRC 1 & 2, BO_S094, GANA ALI, BO_S177, VERTINARY, BO_S096, GARDENER LOW COST, BO_S091, NGURNO, BO_S092, KUYA PRIMARY SCHOOL, BO_S097, WATER BOARD, BO_S133, GSSSS MONGUNO, BO_S101, MAGISTRATE, BO_S029, LOW COST / SDP, BO_S162, AISHA BUHARI CAMP, BO_S028, GSS BENISHEIKH, BO_S160, NRC CAMP, BO_S111, GWOZA WAKANE PRI. SCH., BO_S073, 20 HOUSING UNIT,

Trend of the Number of IDP's per week



KEY FINDINGS

Shelters in Sites such as Muna Garage, Madinatu and Boarding school camp Konduga need reinforcement to withstand the storm that comes with the rainy season. Water is also a major issue in a lot of sites. For places like Banki idp camp, the influx of people is overstretching the already limited water capacity. Magistrate and lowcost camps in Benisheikh are also faced with water scarcity. Gana Ali in monguno has no water .



371,405 Total number of IDP's residing in assessed sites for the week in review

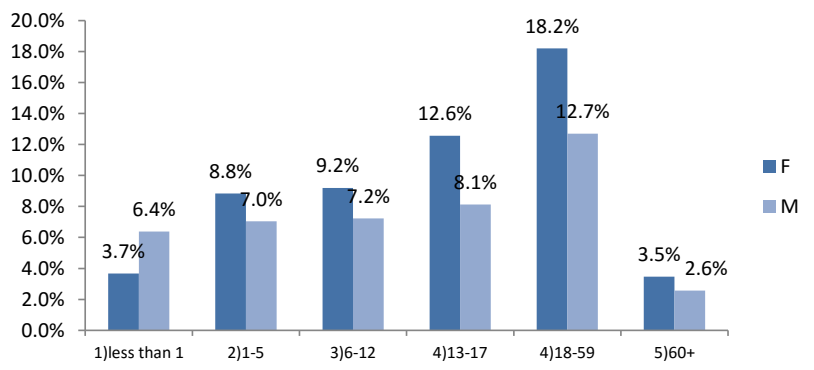


14% non-functional latrines
10% non-functional bathrooms
29% non-functional water points

Week in review (22 to 28 May 2017 (Week 21))



Summary on population demographic								
Number of Households	Breakdown	Infants	Children	Pre-Teens	Teens	Adults	Elderly	Number of Individuals
	Gender/age	Less than 1	(1-5)	(6-12)	(13-17)	(18-59)	(60+)	
65,324	Male	23709	26168	26850	30199	47158	9516	371,405
	Female	13661	32839	34150	46657	67633	12865	
	Total	37370	59007	61000	76856	114791	22381	



Graph 1: Age group and sex breakdown

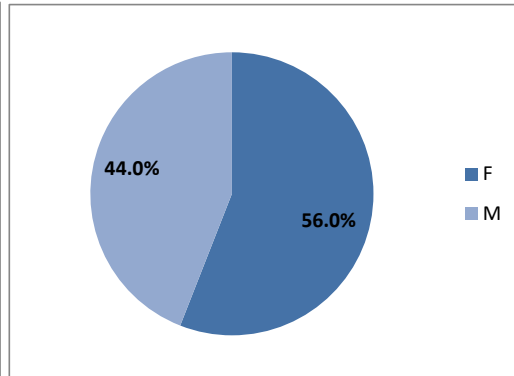


Chart 1: Gender distribution



EMERGENCY SHELTER & NFI Summary of activities carried out and gaps seen:

SSID	SiteName	Comments on Shelter/NFI section
BO_S018	FARM CENTRE	175 HH are in need of kitchen sets.
BO_S047	MUNA GARAGE EL BADAWE	1000 shelter kits are needed on site
BO_S014	TEACHERS VILLAGE	15 blocks, comprising of 86 tent ,are torn and partially damaged by termites.24 makeshift shelters are also partially damaged. we have conducted registration and found that 51 house holds are living outside.
BO_S009	NYSC CAMP BORNO	18 house hold are living without shelter.
BO_S068	FARIA GIDAN BLOCK CAMP	722 household live in makeshift shelters that are liable to damage by storm. There is serious need for shelter Kit. Most of the makeshift on site are already damaged by the wind and filled up with water.
BO_S004	BALE GALTIMARI PRI SCHOOL	The most needed NFI on site for now are plastic sheeting and kitchen sets for 59 house holds.
BO_S001	FORI PRIMARY SCHOOL	The most needed NFI on site are Blankets, Mats and Kitchen sets for 14 house holds.
BO_S012	EYN CAMP	3 youth sleeping outside with no shelter
BO_S016	FEDERAL TRAINING CENTER CAMP	43 Househods living outside without shelter
BO_S113	EL-MISKIN CENTER	one shelter is partially damaged by the storm. About 300HH need shelter kits
BO_S003	MADINATU CAMP	As the rainy season is here, Shelter kits for reinforcing makeshift shelter is needed by 353HH.
BO_S128	MUNA DA'ALTI 1A	There is need for shelter kits on site a. 95% of population are living in make shifts shelter which can be destroyed by wind or heavy rainfall.
BO_S129	MUNA DA'ALTI 1B	18HH out of 25 HH need shelter kits distribution.
BO_S010	BAKASI CAMP	About 30 IOM shelters need tarpaulins
BO_S025	SABONGARI BUZU CAMP	105HH are in need for NFI
BO_S057	GENERAL HOSPITAL BAMA	1200 HH are in need of NFI
BO_S017	400 HOUSING ESATE GUBIO	171 individual from kala-balge are living out side without shelter.
BO_S046	JAFRA SHAGARI CAMP	25 individual are in need of plastic sheeting
BO_S019	CAN CATHOLIC SECRETARIAT	6 household need shelter repair kit
BO_S040	DCC SHUWARI CAMP	39 household need shelter kits for repair of their makeshift and completion of construction of some. While 10 new household arrived and have no shelter and NFI.
BO_S058	BOARDING SCHOOL	160HH needs shelter kits.500HH on site need Pesticides to prevent termites from destroying the tents . 250 newly arrived individuals needs kitchen sets, mats, blankets, mosquito nets, buckets and jerrycans.
BO_S110	BANKI CAMP	2,000 household without shelter 2,500HH are in need of hygiene kits Over 2000 HH are in need of soaps
BO_S098	GOVERNMENT DAY SECONDARY SCHOOL (GDSS)	there is a need to encourage active partners such as IOM NRC UNHCR to put more emphasis on shelter kits rather than shelters as it will go a long way in assisting the idps
BO_S059	GOVERNMENT GIRLS SECONDARY SCHOOL (GGSS)	there is a pressing need for shelter as the raining season have already sets in. close to 2000 shelter kits are need on site.
BO_S099	NRC 1 & 2	idps living in water logged areas have been moved by sema
BO_S096	GARDENER LOW COST	there is a need to provide plastic sheeting to 250HH
BO_S091	NGURNO	the camp is in need of about 500 shelter kits because the rainy season is here and most camp residents are living in straw makeshift shelters.
BO_S097	WATER BOARD	There is need for 2600 mosquito nets. 2600 buckets and jerry cans are also needed on site.

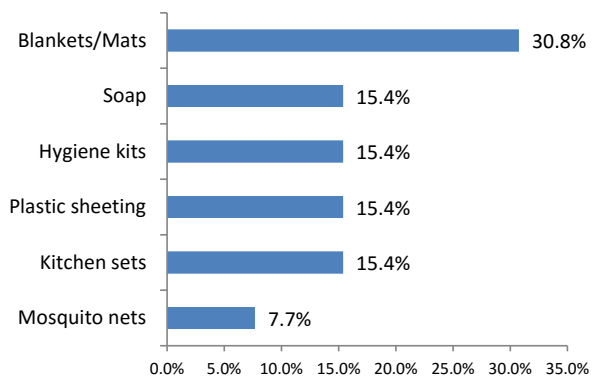
CCCM - NIGERIA weekly report

BO_S101	MAGISTRATE	there is need of 200 shelter kits
BO_S029	LOW COST / SDP	100 HH on site are in need of shelter
BO_S162	AISHA BUHARI CAMP	there is a need for additional 50 shelters on site there are 7 shelters that are still collapsed on site
BO_S028	GSS BENISHEIKH	there is need to for 50 shelters on site
BO_S160	NRC CAMP	THE CAMP IS IN NEED OF 400 SHELTERS DUE TO THE RELOCATION OF 522 IND, 114 HH FROM USMAN GARDEN CAMP
BO_S111	GWOZA WAKANE PRI. SCH.	NFIs like soap, mosquito nets and detergents are needed by 228HH on site.
BO_S073	20 HOUSING UNIT	60 IOM shelters and 64 UNHCR shelters are in need of rehabilitation.

Activities for the week under review

SSID	SiteName	Sub-Category	Description	QTTY	Provider
BO_S003	MADINATU CAMP	NFI	Others		People of Niger Republic
BO_S057	GENERAL HOSPITAL BAMA	NFI	Emergency shelter		DRC
BO_S057	GENERAL HOSPITAL BAMA	NFI	Mosquito nets	300	DRC
BO_S057	GENERAL HOSPITAL BAMA	NFI	Bucket/Jerry Can	600	DRC
BO_S057	GENERAL HOSPITAL BAMA	NFI	Soap	1800	
BO_S057	GENERAL HOSPITAL BAMA	NFI	Hygiene kits		DRC
BO_S145	MUNA DA'ALTI 2A	Shelter	Shelter kits	5	CRS

Most needed NFIs (% of sites)



Graph 2: Needed NFIs

% IDP's living outside of shelter

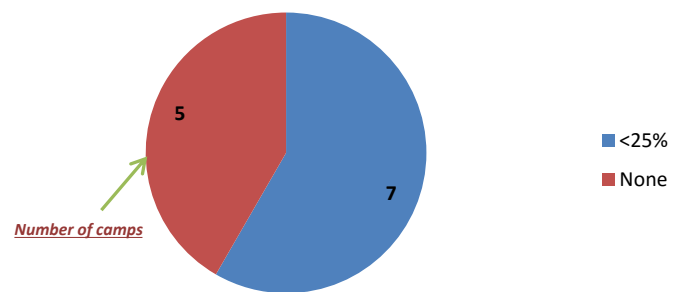


Chart 2: IDPs living outside of shelter



WASH

Summary of activities carried out during week in review:

SSID	SiteName	Comments on WASH section
BO_S047	MUNA GARAGE EL BADAWE	We need 2 more borehole in the camp.
BO_S014	TEACHERS VILLAGE	Need sanitation tools, need waste disposal bin and also repairs of 26 broken tap heads.
BO_S009	NYSC CAMP BORNO	Supply of water from the water point is slow due to the fault from solar panels.
BO_S068	FARIA GIDAN BLOCK CAMP	Water is not sufficient on site. There is need for additional 24 latrines and 100 showers.
BO_S001	FORI PRIMARY SCHOOL	No problem of water supply on site.
BO_S012	EYN CAMP	1 hand pump its faulty and needs to be repaired. There is need for additional 40 toilets
BO_S053	KAWARMELA	solar panel for borehole is still yet to repaired.
BO_S013	MOGCOLIS CAMP	We have 4 boreholes but only one is working.
BO_S016	FEDERAL TRAINING CENTER CAMP	Additional water point needed.
BO_S113	EL-MISKIN CENTER	They don't have water now in the camp due to faulty solar panels. They also need 3 more latrines and 43 showers.

CCCM - NIGERIA weekly report

BO_S010	BAKASI CAMP	IMC has embarked on the repairing of 52 latrines that were partially damaged by previous wind storm. One UNICEF/RUWASA solar powered water point is broken as a result of the storm. This is causing water scarcity and needs to be fixed.
BO_S057	GENERAL HOSPITAL BAMA	There is often queue at the water points due to the limited number of the taps at the water points. There is need for the reticulation of the existing water points to areas where there are no water points. This will decongest the queue and waiting time.
BO_S017	400 HOUSING ESATE GUBIO	there is need for additional water source.
BO_S040	DCC SHUWARI CAMP	17 latrines at the camp is filled up and need to be evacuated .
BO_S058	BOARDING SCHOOL	At least one additional water source is needed on site to combat the present water scarcity.
BO_S110	BANKI CAMP	latrines are not adequate in the camp. The camp need s additional 500 latrines water is also a major problem on site as camp residents get less than 2 liters a day
BO_S094	GANA ALI	there is no water supply on site
BO_S096	GARDENER LOW COST	there is open defecation on site. 6 toilets on site needs to be dislodged
BO_S091	NGURNO	there is need for more water points on site
BO_S092	KUYA PRIMARY SCHOOL	165 latrines need to be dislodged on site
BO_S101	MAGISTRATE	there is a need for 3 additional boreholes on site
BO_S029	LOW COST / SDP	the site is in need of up to 3 additional boreholes

Activities for the week under review					
SSID	SiteName	Sub-Category	Description	QTTY	Provider
BO_S009	NYSC CAMP BORNO	Latrines	Pit Latrine	10	IOM
BO_S057	GENERAL HOSPITAL BAMA	Latrines	Pit Latrine	100	UNICEF
BO_S057	GENERAL HOSPITAL BAMA	Bathing facilities	Bathroom	50	UNICEF
BO_S097	WATER BOARD	Water points	Solar	1	UNICEF
BO_S162	AISHA BUHARI CAMP	Water points	Reservoir		CRS
BO_S111	GWOZA WAKANE PRI. SCH.	Water points	Handpump		IOM
BO_S111	GWOZA WAKANE PRI. SCH.	Water points	Reservoir		IRC
BO_S111	GWOZA WAKANE PRI. SCH.	Latrines	Pit Latrine		UNICEF

Gaps identified on sites

# of functional latrines	4,006	85.5%
# of non-functional latrines	679	14.5%
Total	4,685	100.0%

# of functional bathrooms	2,652	90.4%
# of non-functional bathrooms	283	9.6%
Total	2,935	100.0%

# of functional water points	250	71.0%
# of non-functional water points	102	29.0%
Total	352	100.0%

Common means of disposal	%
Very clean	2.4%
Clean	26.2%
Not so clean	64.3%
Dirty	4.8%
Very dirty	2.4%

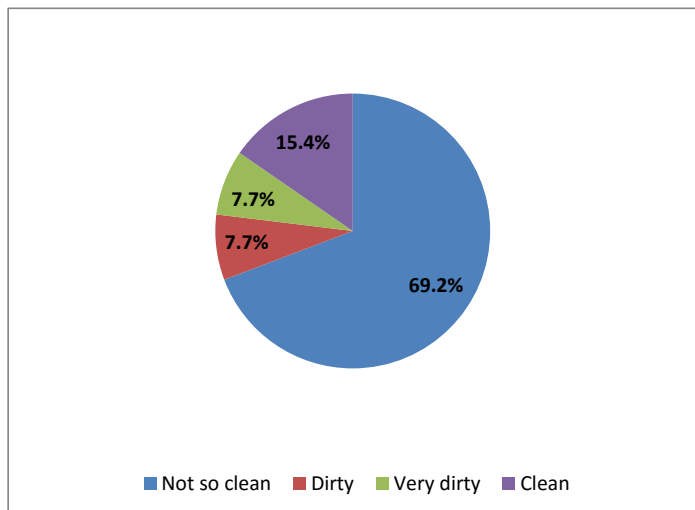


Chart 3: Frequency of evacuation of toilets



Summary of activities carried out and gaps seen:

SSID	SiteName	Comments on Protection section
BO_S068	FARIA GIDAN BLOCK CAMP	There is need for a psychosocial team , especially for children, childrens on site.
BO_S004	BALE GALTIMARI PRI SCHOOL	No Security presently on site.
BO_S110	BANKI CAMP	more sensitization on Gbv is needed on site awareness campaign for unaccompanied and separated children cases needs to be improved on site

Activities for the week under review

SSID	SiteName	Sub-Category	QTTY	Provider
BO_S018	FARM CENTRE	PSS		IOM
BO_S018	FARM CENTRE	PSS		UNFPA
BO_S020	GONI KACHALLARI PW	PSS		IOM
BO_S047	MUNA GARAGE EL BADAWE	Recreational activity for children		UNICEF
BO_S047	MUNA GARAGE EL BADAWE	Recreational activity for children		IOM
BO_S047	MUNA GARAGE EL BADAWE	PSS		IOM
BO_S047	MUNA GARAGE EL BADAWE	PSS		UNFPA
BO_S014	TEACHERS VILLAGE	Counselling	2	IOM
BO_S014	TEACHERS VILLAGE	Vocational training		IOM
BO_S014	TEACHERS VILLAGE	PSS		IOM
BO_S014	TEACHERS VILLAGE	PSS		UNICEF
BO_S014	TEACHERS VILLAGE	Vocational training		UNFPA
BO_S014	TEACHERS VILLAGE	Vocational training		UNHCR
BO_S009	NYSC CAMP BORNO	Focus group meeting	14	IOM
BO_S001	FORI PRIMARY SCHOOL	Focus group meeting	18	IOM
BO_S004	BALE GALTIMARI PRI SCHOOL	Focus group meeting	91	UNICEF
BO_S113	EL-MISKIN CENTER	PSS		IOM
BO_S003	MADINATU CAMP	Focus group meeting		IOM
BO_S003	MADINATU CAMP	Recreational activity for children		Save the Children
BO_S003	MADINATU CAMP	Vocational training		UNFPA
BO_S010	BAKASI CAMP	Recreational activity for children	6	IOM
BO_S010	BAKASI CAMP	PSS	6	IOM
BO_S010	BAKASI CAMP	Vocational training	2	IOM
BO_S010	BAKASI CAMP	GBV awareness	3	UNFPA
BO_S057	GENERAL HOSPITAL BAMA	Focus group meeting		IOM
BO_S057	GENERAL HOSPITAL BAMA	Recreational activity for women		IOM
BO_S057	GENERAL HOSPITAL BAMA	Recreational activity for children		IOM
BO_S057	GENERAL HOSPITAL BAMA	Recreational activity for children		UNICEF
BO_S057	GENERAL HOSPITAL BAMA	PSS		IOM
BO_S057	GENERAL HOSPITAL BAMA	Counselling		UNFPA
BO_S057	GENERAL HOSPITAL BAMA	GBV awareness		UNFPA
BO_S110	BANKI CAMP	Focus group meeting	2	IOM
BO_S110	BANKI CAMP	Counselling	3	IOM
BO_S110	BANKI CAMP	PSS	3	IOM
BO_S059	GOVERNMENT GIRLS SECONDARY SCHOOL (GGSS)	Focus group meeting		IRC
BO_S091	NGURNO	Focus group meeting	4	IOM
BO_S162	AISHA BUHARI CAMP	Recreational activity for children	1	IOM
BO_S160	NRC CAMP	Recreational activity for children	1	IOM
BO_S111	GWOZA WAKANE PRI. SCH.	Focus group meeting		IOM
BO_S111	GWOZA WAKANE PRI. SCH.	Recreational activity for children		IOM
BO_S111	GWOZA WAKANE PRI. SCH.	Recreational activity for women		IOM
BO_S111	GWOZA WAKANE PRI. SCH.	GBV awareness		IOM
BO_S111	GWOZA WAKANE PRI. SCH.	Counselling		IOM
BO_S111	GWOZA WAKANE PRI. SCH.	Vocational training		IOM
BO_S111	GWOZA WAKANE PRI. SCH.	PSS		IOM
BO_S073	20 HOUSING UNIT	Focus group meeting		IOM
BO_S073	20 HOUSING UNIT	Recreational activity for children		IOM
BO_S073	20 HOUSING UNIT	Recreational activity for women		IOM
BO_S073	20 HOUSING UNIT	GBV awareness		IOM
BO_S073	20 HOUSING UNIT	Counselling		IOM
BO_S073	20 HOUSING UNIT	Vocational training		IOM
BO_S073	20 HOUSING UNIT	PSS		IOM

Security presence (% of sites)

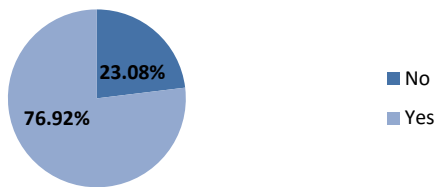
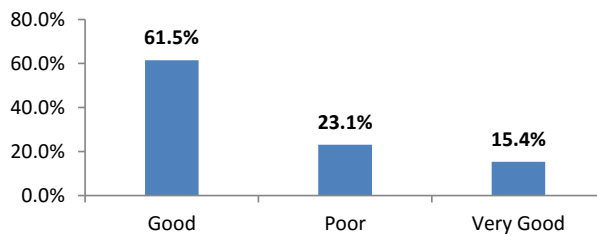


Chart 4: Security presence on sites

IDP's relationship with security



Graph 3: Security incidents reported on sites

Unaccompanied/Separated Children							
Total		Unaccompanied Children		Separated Children		Unaccompanied Children In Foster	
		Male	Female	Male	Female	Male	Female
#	2,171	342	241	711	524	176	177
%	100%	15.8%	11.1%	32.7%	24.1%	8.1%	8.2%

*The current CCCM monitoring does not enable to track registration status of a UASC by a Child Protection organization and subsequent monitoring.



EDUCATION

Summary of activities carried out and gaps seen:

SSID	SiteName	Comments on Education section
BO_S047	MUNA GARAGE EL BADAWE	In need of school stationery.
BO_S014	TEACHERS VILLAGE	Need more stationary. Need a source motivation for children as the turn out is very low. Low turn out of teachers.
BO_S068	FARIA GIDAN BLOCK CAMP	There is no school on site
BO_S004	BALE GALTIMARI PRI SCHOOL	Most parent cannot afford to send their children to school. less than 25% of the children attend school on site.
BO_S001	FORI PRIMARY SCHOOL	All children on site have access to Educational facilities since they recite at the school premises but 25% of the children do not attend school because their parent cannot afford to send them to school. instructional materials are needed for the children on site.
BO_S013	MOGCOLIS CAMP	More Classrooms are needed..
BO_S016	FEDERAL TRAINING CENTER CAMP	parents need to be encouraged to send their children to school.
BO_S113	EL-MISKIN CENTER	No school on site.
BO_S003	MADINATU CAMP	They need classrooms, seats and uniform.
BO_S128	MUNA DA'ALTI 1A	There is urgent need of school on site,most of the children are currently not in school.
BO_S129	MUNA DA'ALTI 1B	There is urgent need for school on site as all children are out of school.
BO_S010	BAKASI CAMP	There is need to add more teachers and train them.
BO_S024	GARBA BUZU QRT	Children attending school on site do not have materials like uniforms, books and sandals.
BO_S025	SABONGARI BUZU CAMP	Children attending school on site do not have materials like uniforms, books and sandals.
BO_S057	GENERAL HOSPITAL BAMA	There is a need for providing school uniforms to the children of school age.
BO_S019	CAN CATHOLIC SECRETARIAT	49 children need instructional material.
BO_S040	DCC SHUWARI CAMP	there is need for Instructional material for nursery school children and there is need for additional bench and desk.
BO_S110	BANKI CAMP	no enough teaching and learning spaces on site over 60% of the children on site do not attend any formal school

CCCM - NIGERIA weekly report

BO_S096	GARDENER LOW COST	There is a need to open a school on site
BO_S092	KUYA PRIMARY SCHOOL	chairs needed for school children on site
BO_S097	WATER BOARD	There is no school on site
BO_S160	NRC CAMP	the site needs classrooms
BO_S111	GWOZA WAKANE PRI. SCH.	the School children need uniforms and sandals. there is need for more classes because the classes are congested.
BO_S073	20 HOUSING UNIT	School children are in need of uniforms, sandals, text books and exercise books.

Activities for the week under review

SSID	SiteName	Description	QTTY	Provider
BO_S009	NYSC CAMP BORNO	Makeshift classroom	4	UNICEF
BO_S053	KAWARMELA	Boards	5	Save the Children
BO_S028	GSS BENISHEIKH	Block classroom	3	SEMA

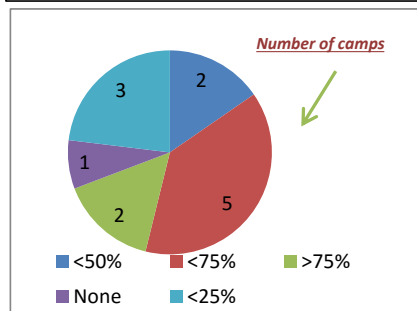


Chart 5: % children attending schools at sites

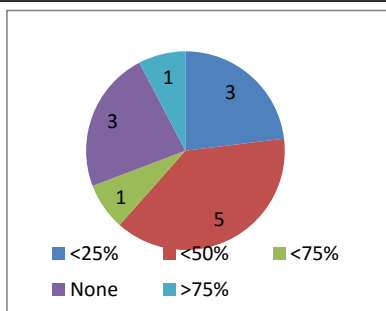


Chart 6: % availability of instructional material

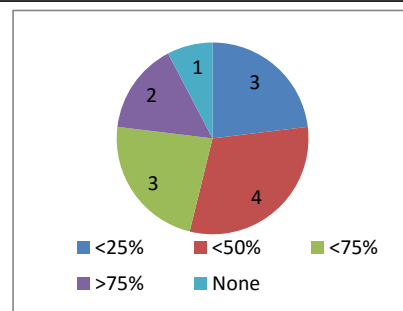


Chart 7: % children with access to facilities



HEALTH, FOOD & NUTRITION

Summary of activities carried out and gaps seen:

SSID	SiteName	Comments on Health, Food & Nutrition section
BO_S068	FARIA GIDAN BLOCK CAMP	Most of the household are not benefiting on CBT program organised by Action against hunger, there is need for intervention for all the household to benefit. There is no medical referral channel for adults patients.
BO_S001	FORI PRIMARY SCHOOL	Supplementary feeding is needed for pregnant and lactating mothers on site.
BO_S003	MADINATU CAMP	They need food, the food given is not enough
BO_S128	MUNA DA'ALTI 1A	There is no clinic on site, there is urgent need of mobile clinic as there is no any form of medical support available to the IDPs.
BO_S129	MUNA DA'ALTI 1B	There is need for mobile clinic on side as there is no any medical facility on side.
BO_S010	BAKASI CAMP	About 20HH complain of not getting their food ratio.. There is gap on food.
BO_S024	GARBA BUZU QRT	More food support is needed on site
BO_S025	SABONGARI BUZU CAMP	More food support is needed on site
BO_S019	CAN CATHOLIC SECRETARIAT	34 household need food item
BO_S040	DCC SHUWARI CAMP	Need for mobile clinic at the site.
BO_S058	BOARDING SCHOOL	The newly arrived individuals needs a regular food supply. They don't have food.
BO_S096	GARDENER LOW COST	the idps on site do not receive any food assistance.
BO_S092	KUYA PRIMARY SCHOOL	many idps on site have not been captured to benefit from food distribution
BO_S162	AISHA BUHARI CAMP	Food is scarce on site
BO_S028	GSS BENISHEIKH	food is the major challenge on site
BO_S160	NRC CAMP	there is a huge gap in provision of food assistance on site

Activities for the week under review

SSID	SiteName	Sub-Category	Description	QTTY	Provider
BO_S047	MUNA GARAGE EL BADAWE	Health	Drugs		UNICEF
BO_S047	MUNA GARAGE EL BADAWE	Health	Supplementary feeding for infants		UNICEF
BO_S014	TEACHERS VILLAGE	Nutrition	Food Items		SEMA
BO_S057	GENERAL HOSPITAL BAMA	Nutrition	Supplementary feeding for infants		UNICEF
BO_S057	GENERAL HOSPITAL BAMA	Health	Drugs		MoH
BO_S057	GENERAL HOSPITAL BAMA	Health	Drugs		NAF
BO_S057	GENERAL HOSPITAL BAMA	Health	Drugs		UNICEF
BO_S110	BANKI CAMP	Health	Drugs		UNICEF
BO_S110	BANKI CAMP	Nutrition	Supplementary feeding for expectant women	200	WFP
BO_S110	BANKI CAMP	Nutrition	Supplementary feeding for lactating women	200	WFP
BO_S110	BANKI CAMP	Nutrition	Supplementary feeding for the elderly	200	SEMA
BO_S091	NGURNO	Nutrition	Food Items		ACF
BO_S097	WATER BOARD	Nutrition	Supplementary feeding for infants		ACF
BO_S111	GWOZA WAKANE PRI. SCH.	Health	Mobile Clinic		UNICEF
BO_S111	GWOZA WAKANE PRI. SCH.	Health	Drugs		UNICEF
BO_S111	GWOZA WAKANE PRI. SCH.	Nutrition	Food Items		WFP
BO_S111	GWOZA WAKANE PRI. SCH.	Nutrition	Supplementary feeding for infants		UNICEF

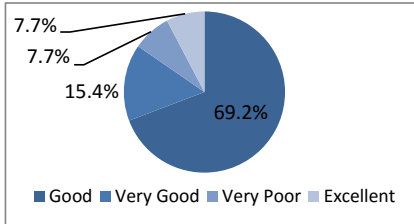


Chart 8: Quality of healthcare delivery in sites

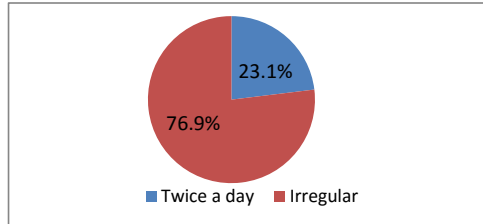


Chart 9: Average number of meals per day in sites

For more information:

CONTACTS

mmugogo@iom.int 08121565300 | fdiab@iom.int 09075070001

