



Camp Management Agency Contact

Veronica Costarelli (DRC CCCM Coordinator)

Mobile: +95 (0)933610135

Email: veronica.costarelli@drcmm.org

Sin Tet Maw

Camp Monthly Report

January 2016

Sittwe Township, Rakhine State, Myanmar

This report provides a snapshot of conditions in Sin Tet Maw camp that are current as of January 31st 2016. The information provided within it is based on CCCM population data and monitoring, as well as service provider input and community feedback.

Profile

Population	2,668
Households	534
No. of Longhouses	94
No. of Occupied Units	752 / 752
No. of HHs in Informal Shelters	20

Population Trends

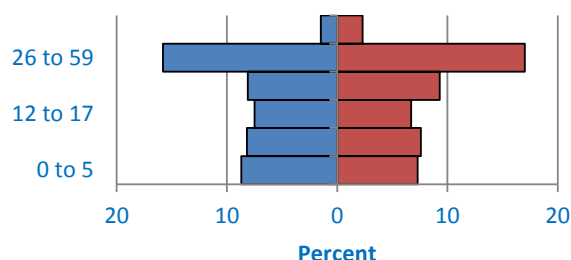
Mortality Rate	Not available
Mortality Trend	Not available
No. Total Deaths	Not available
No Deaths Children Under 5	Not available
No. Births	Not available

Service Providers

CCCM	DRC
Child Protection	SCI
Education	SCI
Food	SCI
Health	MOH/MSF
Nutrition	SCI
Protection	DRC
WASH	SCI

Demographics

% males % females



Sector / Indicator

Minimum Standard (Progress)

Child Protection /	
Education /	
Food /	
Health /	
Livelihoods /	
NFIs /	
Nutrition /	
Protection /	
Shelter /	
WASH /	
WPE /	

Security Incidents

Cross-Cutting Issues

None reported.	Due to CMC's interference with rDRC CCCM's regular implementation plan, Dec/Jan community activities were unable to be conducted and thus beneficiaries were unable to raise issues via FGDs and meetings.
----------------	--

Priorities of the Camp Community*

Priorities of Camp Management Agency**

(!) See note in cross-cutting issues (!)	1) Access to health
	2) CMCs involvement in the recruitment process of IDPs
	3) Establishing Camp Women's Association

*Determined using data from CMC meetings and FGDs w/women, men, youth girls, youth boys, and elderly.

**Determined through analysis of monitoring data, as well as according to CCCM Cluster and CMA strategies.

Schedule of CCCM Field-Level Meetings

Camp Coordination Meeting	Wednesday 24 February @ 11:30 @ DRC CCCM Office
Camp Management Committee Meeting	Tuesday 9 February @ 11:30 @ DRC CCCM Office
Camp Women's Association Meeting	Wednesday 24 February @ (Time TBD) @ DRC CCCM Office *Contact V. Costarelli for details