

SOMALIA | Displacements dashboard | Protection & Return Monitoring Network (PRMN) | Part 1 of 3

Displacements during August 2017

58,000

total displacements in month

41%

related to conflict or insecurity

HIGHLIGHTS

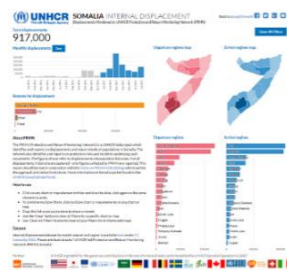
New internal displacements in Somalia reaching 58,000 were monitored by the UNHCR-led Protection & Return Monitoring Network (PRMN) during August 2017 down from 130,000 in July. Displacements where drought was identified as the primary driver at 34,000 showed a significant decline compared to July (68,000) and represents the lowest monthly figure year-to-date.

Conflict-related displacements showed a similar decline in the month down from 60,000 to 24,000. As in the past 3 months, the majority (21,000) of these originated in Lower Shabelle primarily within Marka district during the first half of August as a result of the multilateral armed standoff within the town. Around 2,000 new arrivals from Qoryooley district in Lower Shabelle were also monitored arriving at IDP sites in Mogadishu.

The figures shown here represent displacements and not the populations currently at IDP sites. Inter-agency detailed site assessments co-ordinated by the CCCM cluster are underway which will provide field-based estimates of current populations, IDP site locations as well as key needs, facilities and profiles of IDP sites.

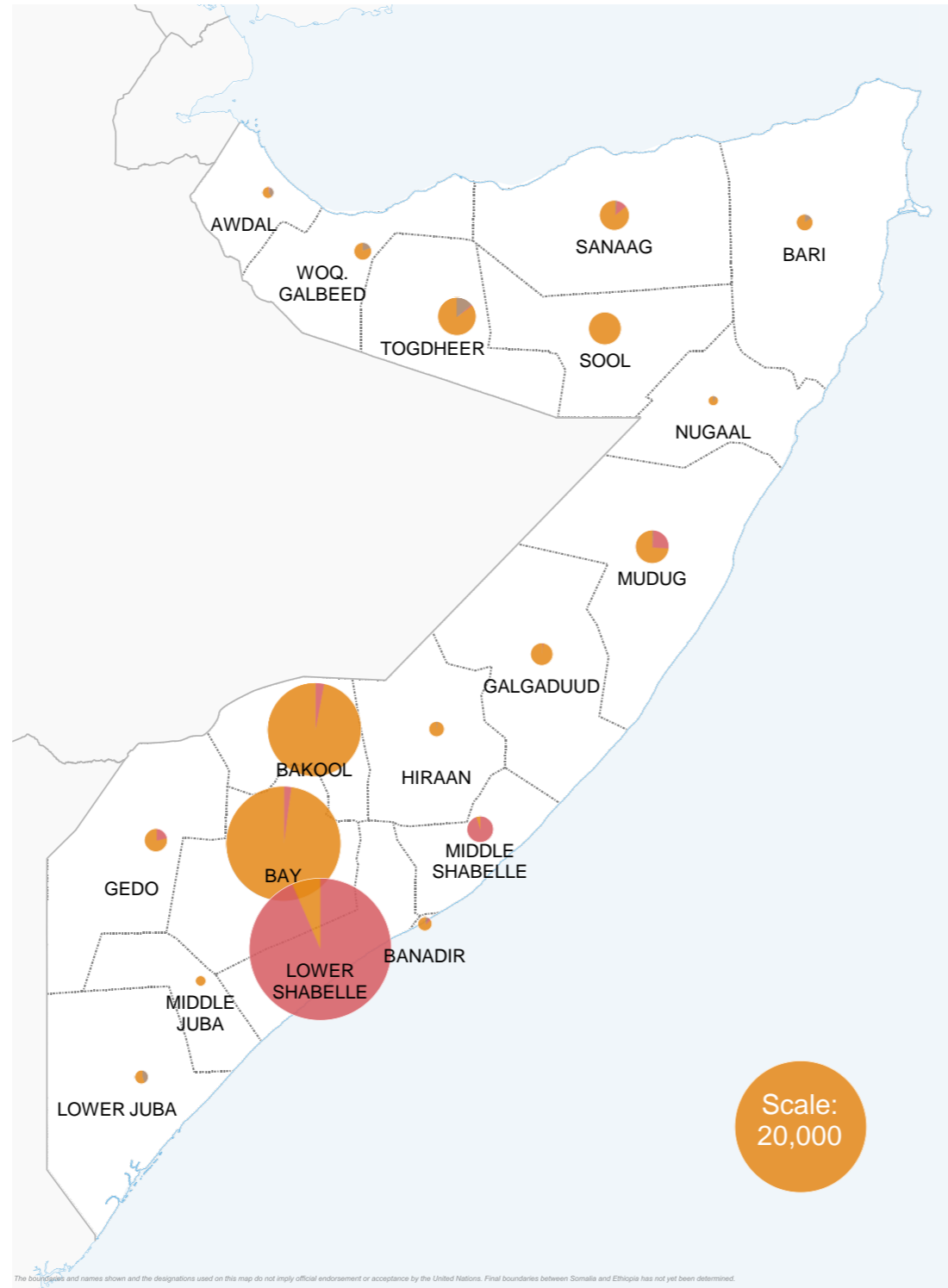
INTERACTIVE DASHBOARD

An interactive online dashboard showing trends of internal displacements filterable by regions of origin and arrival and by reason for displacement may be explored at the following link:

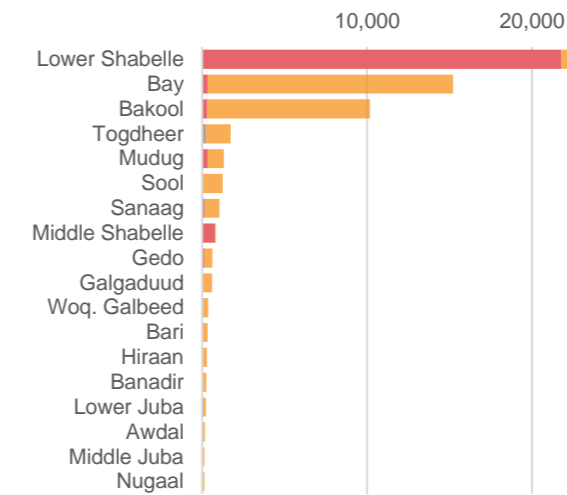


<https://unhcr.github.io/dataviz-somalia-prmn/index.html>

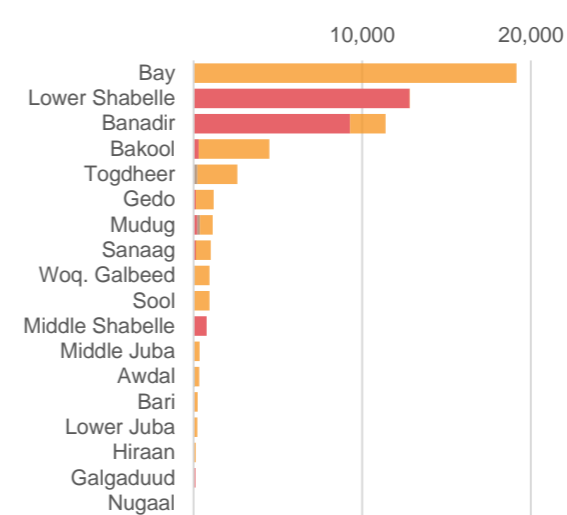
Map showing regions of origin (departures) in month by reason



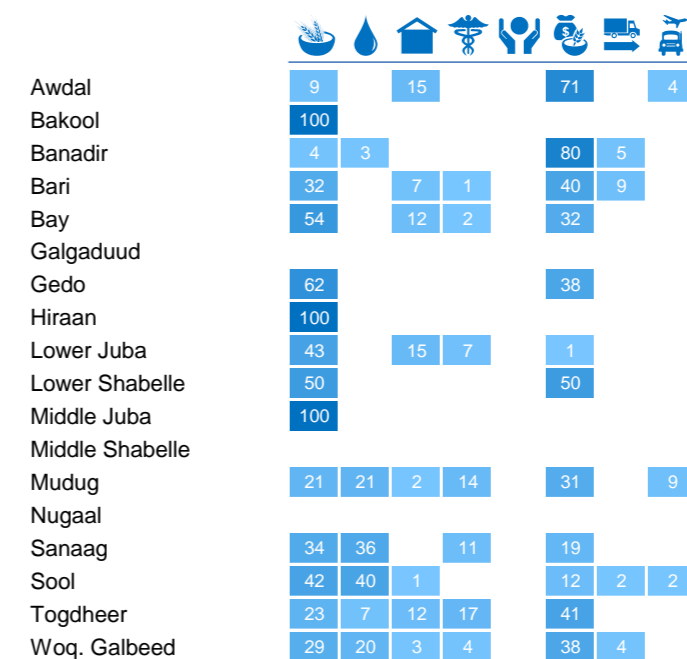
Displacement origins in month



Displacement destinations in month



Priority needs of new arrivals in month [1]



AUGUST 2017

Conflict origin regions

Lower Shabelle	21,777
Middle Shabelle	782
Mudug	327
Bay	320
Bakool	300
Other	305

Top district destinations

Baidoa	19,146
Marka	12,555
Mogadishu	11,388
Waajid	1,800
Tayeeglow	1,500
Burco	1,302

Conflict destination districts

Marka	12,555
Dayniile	4,668
Kaxda	3,414
Dharkenley	587
Jowhar	582
Other	305

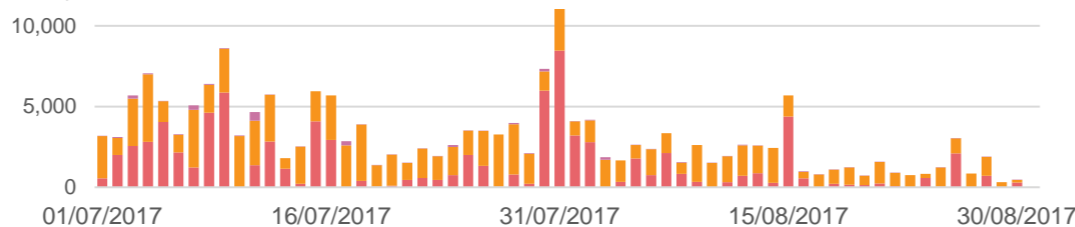
KEY

- Conflict/Insecurity
- Drought
- Flood
- Other

NOTES

[1] Priority needs are those expressed by displaced households on arrival or by key informants. A darker colour indicates larger proportion of the need within the region and numbers indicate percentage of all needs expressed within region.

Daily displacement trend over last two months



UNHCR is grateful for the generous contributions of donors who have directly contributed to the UNHCR Somalia operation in 2017



Contact: SOMMOPMN@unhcr.org
Further information/data available on request

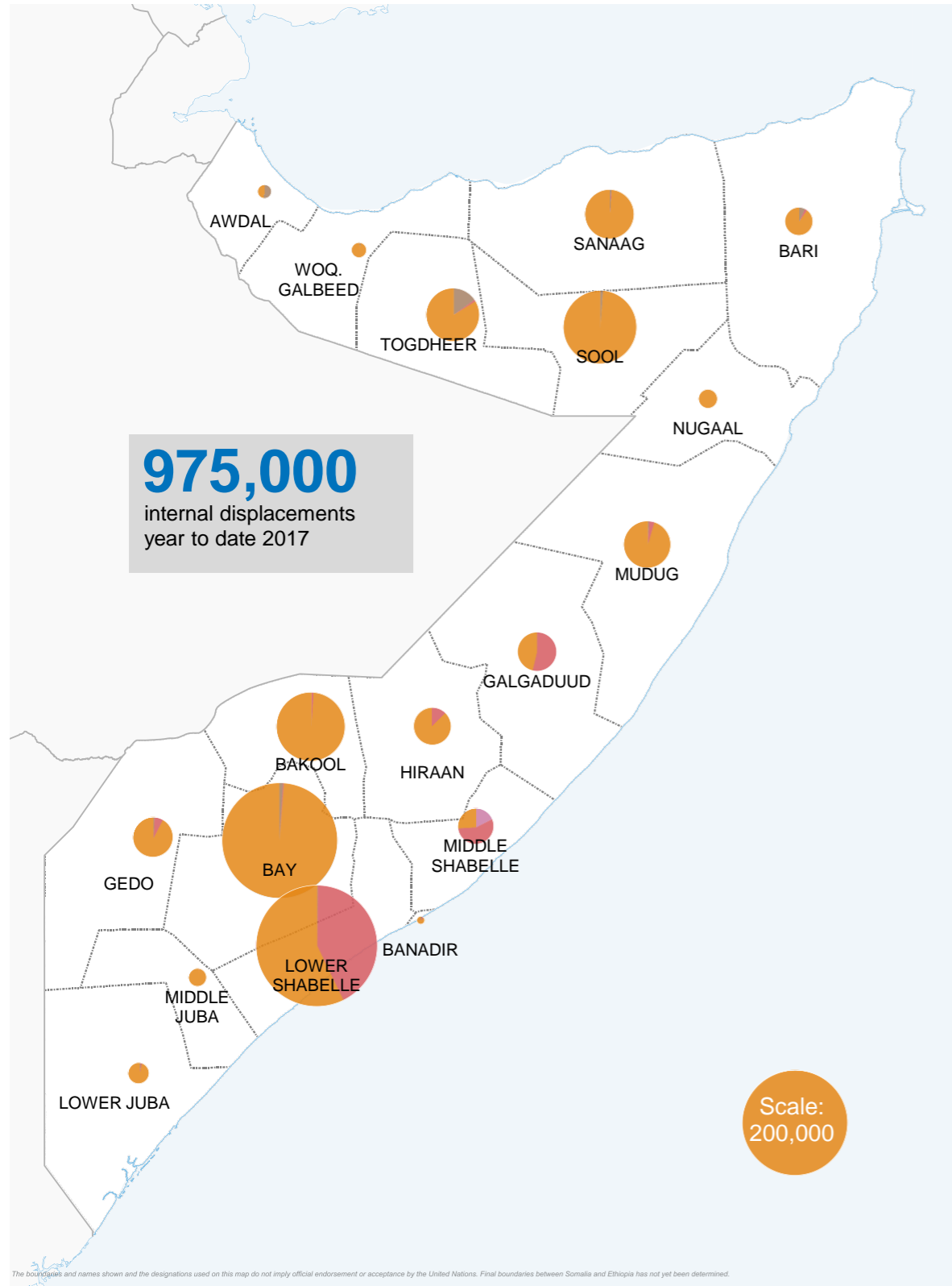
Implementing partner:



SOMALIA | Displacements dashboard | Protection & Return Monitoring Network (PRMN) | Part 2 of 3

Cumulative displacements and trends 1 January - 31 August 2017

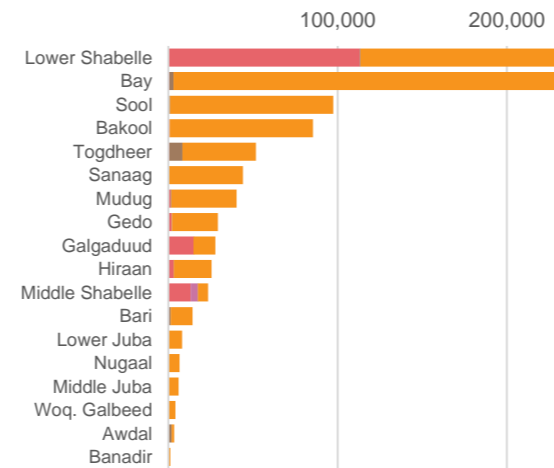
Map showing regions of origin of displacements (departures) by reason - cumulative year to date



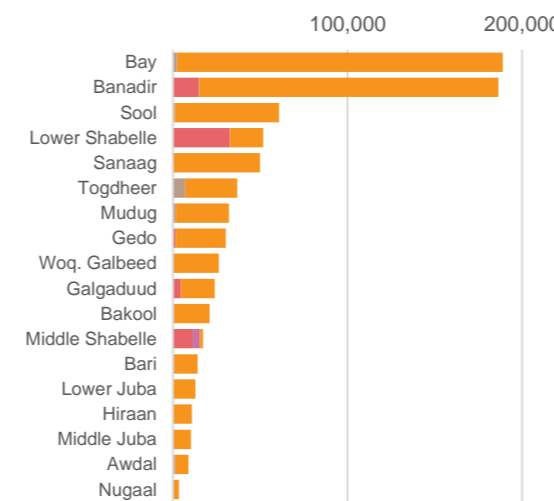
About PRMN

The PRMN (Protection & Return Monitoring Network) is a UNHCR-led project which identifies and reports on displacements of populations in Somalia as well as protection incidents. This dashboard should be read in conjunction with the [Notes on PRMN Methodology](https://goo.gl/HQwirQ) (https://goo.gl/HQwirQ) which outline the approach and certain limitations. The figures shown are for numbers of individuals and are based on interviews at destination.

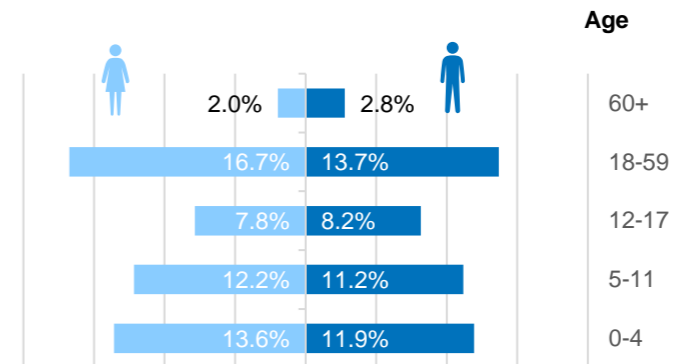
Displacement origins year to date



Displacement destinations year to date



Displacements age and gender breakdown



Note: disaggregated data for displaced persons are based on those displacement reports where data has been collected at household level.

2017
YEAR TO DATE

Top district destinations YTD

Baidoa	234,106
Mogadishu	221,995
Marka	43,377
Buuhoodle	40,520
Laas Caanood	32,684
Gaalkacyo	28,758

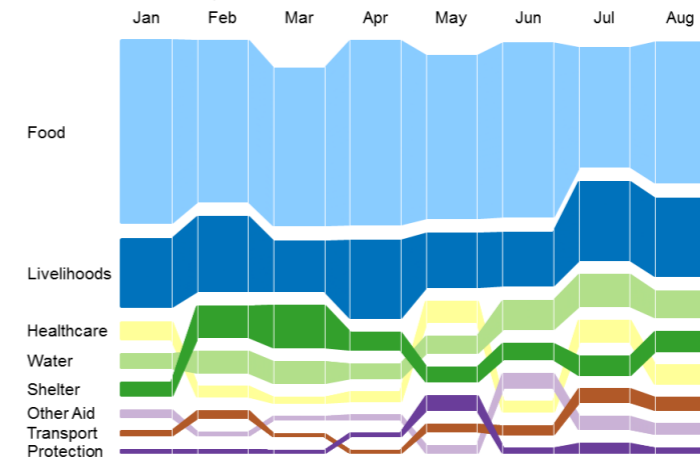
Conflict origins year to date

Lower Shabelle	113,253
Galgaduud	14,946
Middle Shabelle	13,282
Hiraan	3,198
Gedo	1,999
Other	4,313

Top drought origin districts

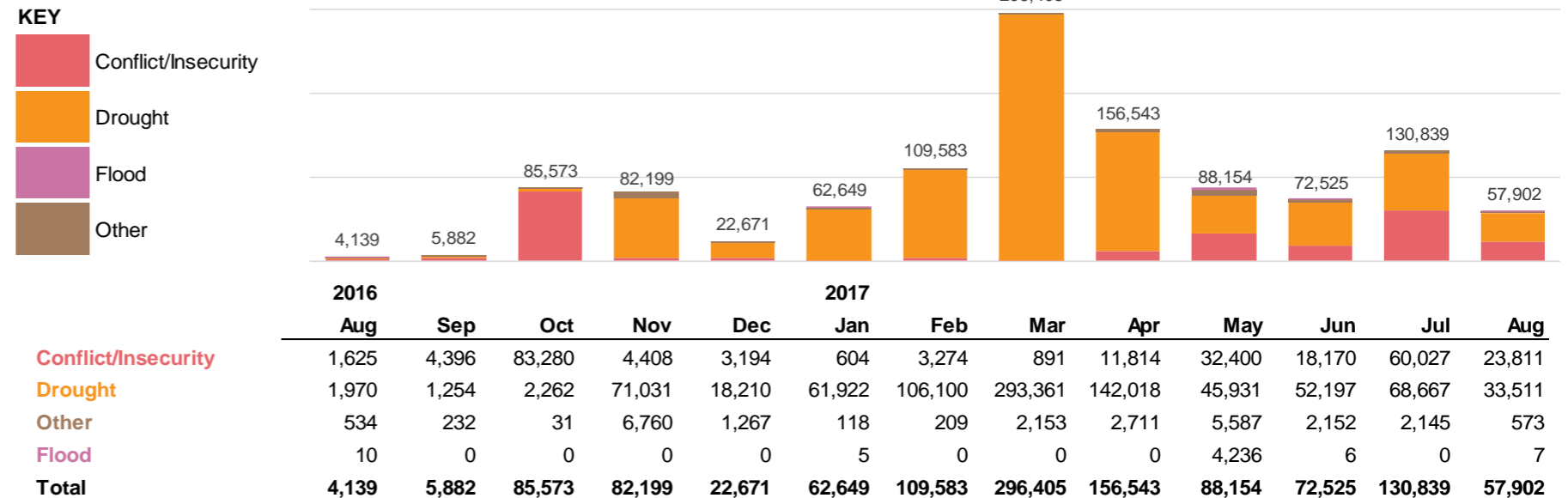
Baydhaba	139,767
Kurtunwaarey	97,641
Diinsoor	48,269
Qansax Dheere	34,134
Caynabo	29,791
Waaajid	25,386

Trends of priority needs (first need expressed)



Priority needs are those expressed at household level on arrival. The chart above shows aggregated needs countrywide though significant variations may exist depending on location and reason for displacement.

Last 12 months trend - all displacements by reason



UNHCR is grateful for the generous contributions of donors who have directly contributed to the UNHCR Somalia operation in 2017



Contact: SOMMOPMN@unhcr.org
Further information/data available on request

Implementing partner:



