

Tanzania

01 – 30 November 2017

KEY BURUNDIAN POPULATION FIGURES

232,711

Burundians who arrived in Tanzania since April 2015

119,089

Burundian population of concern in Nduta Camp

69,280

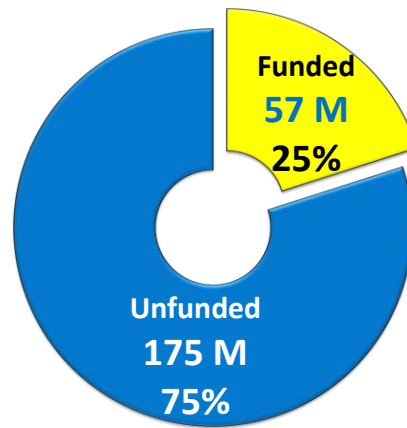
Burundian population of concern in Nyarugusu Camp pre and post influx

46,161

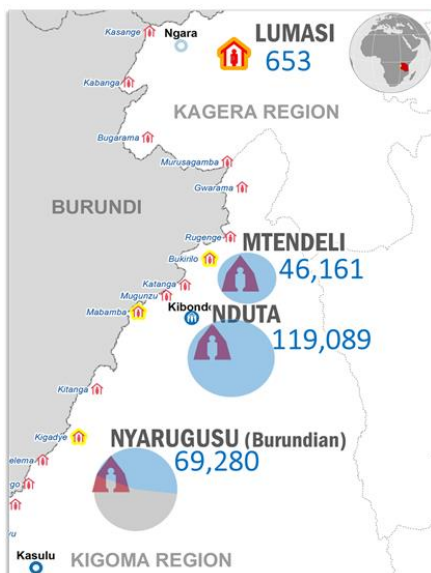
Burundian population of concern in Mtendeli Camp

USD 232.8 M

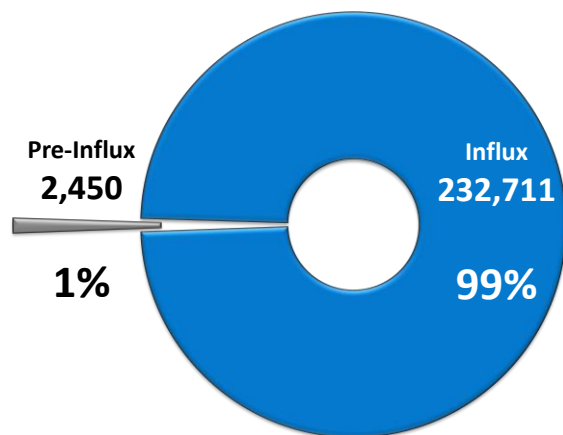
Requested for the Tanzania situation as part of the 2017 revised Burundi Regional Refugee Response Plan



MAP OF BURUNDIAN POPULATION IN THE CAMPS



BURUNDIAN POPULATION PRE AND POST INFLUX IN THE REFUGEE CAMPS IN TANZANIA



Operational Highlights

Statistical Refugee Situation in Tanzania: The ratio of females to males among arrivals from Burundi since April 2015 stands at 48:52; while children (below age 18) ratio to adults is currently at 56:44. Elderly persons and persons with specific needs make up 2% and 5% of the total population respectively.

Voluntary Repatriation of Burundian Refugees: During the reporting period, UNHCR and the Government of Tanzania supported the voluntary repatriation of 3,676 individuals, including 461 persons with specific needs (PSNs), to Burundi. This brings the total number of assisted returnees to 10,561 individuals, including 1,276 PSNs since the launch of the repatriation process on 7 September 2017. In November 2017, a decline in the number of refugees registering to return and an increase in the number of withdrawals was recorded. An operational plan and standard operating procedures for the voluntary repatriation of Burundian refugees from Tanzania were developed by UNHCR and the Government of Tanzania together with partners. The exercise is facilitated through close collaboration with the following partners: Danish Refugee Council (DRC), HelpAge International, International Committee of the Red Cross (ICRC) /Tanzanian Red Cross and Red Crescent Society (TRCS), International Organization for Migration (IOM), Plan International and World Food Programme (WFP).

Key Achievements



PROTECTION

Achievements and Impact

- UNHCR, IRC, Plan International, Police and the Ministry of Home Affairs (MHA) convened a meeting on the creation of One Stop Centers (OSC) in refugee camps. It was agreed during the meeting that police officers will support SGBV-related cases at IRC Support Center, the main police station and Zone 9 police station.

- On 24-27 November 2017, Nduta, Mtendeli and Nyarugusu camps launched various events to commemorate 16 Days of Activism against Sexual and Gender-Based Violence. The theme of this year's global campaign was "Leave No One Behind – Working Together to End Sexual and Gender Based Violence".



The International Rescue Committee (IRC), DRC, Plan International, HelpAge International, The Women's Legal Aid Centre (WLAC) and UNHCR held a series of events in Nduta and Nyarugusu camps aimed at raising public awareness on how sexual and gender-based violence (SGBV) is a human rights issue.

- During the reporting period, IRC facilitated talks in Nduta, Mtendeli and Nyarugusu camps with community members and leaders on SGBV, including intimate partner violence, and how parents can better protect their children against SGBV, gender-based discrimination, as well as the related risks associated with firewood collection.

- During the reporting period, African Initiatives for Relief and Development (AIRD) finalized the construction of help desks, which will be used by the Community Based Protection Units in Nduta and Mtendeli camps

Identified Needs and Remaining Gaps

- An increase in the number of new Burundian arrivals towards the end of the month was recorded in Ngara District, in Kagera Region. By the end of November 2017, there were 527 asylum-seekers from Burundi at reception centres in Ngara.
- The status of unregistered children across Nduta, Mtendeli and Nyarugusu is still pending. 178 children were reported to UNHCR, partners and the MHA as either living with their parents or in foster care. UNHCR and partners continue to help reunite unaccompanied children with their families and to advocate for the registration of these children
- Ten unaccompanied children were identified at Tanzania's border entry points. The children indicated their parents were in Nduta, Mtendeli and Nyarugusu camps. UNHCR and partners are following up on the information provided by the children in an effort to identify their parents.
- Limited funding for facilitated return to Burundi.
- The admission of asylum-seekers through border entry points in Kigoma and Kagera Regions remained a challenge despite UNHCR's continued advocacy efforts.



EDUCATION

Achievements and Impact

- UNHCR represented the Education Working Group (EWG) in a consultative meeting on the National Inclusive Education Strategy. This strategy, which also includes an important chapter on refugee education, seeks to strengthen inclusive education among children, adolescents and youth, as well as vulnerable groups, and feeds into Tanzania's vision to become a middle income and semi-industrialized nation by 2025. The drafting of the strategy is linked to the undertaking of the 2017 Joint Education Sector Review (JESR) in which UNHCR and Save the Children (SCI) represented the EWG as part of a broader framework on including refugee education in the national education system.
- Under the leadership of Norwegian Refugee Council (NRC) and Save the Children (SCI), the EWG commenced the Joint Education Needs Assessment (JENA). Following primary data collection by an independent consultant, the EWG expects to have a comprehensive document detailing the results by the end of January 2018. This information will be used to design an education programme in accordance with national and global standards that benefits both refugee and host communities in Tanzania.
- Following a series of meetings with the district leadership and consultative discussions between the EWG and the Kibondo District Education Office, in collaboration with the Kibondo District Government and Caritas, UNHCR commenced the construction of latrine facilities in Nengo and Kwizera Primary Schools in Kibondo.

- 22 university applicants under UNHCR's higher education scholarship programme (DAFI) received their university admission letters. 16 applicants secured offers from the University of Dodoma while the remaining number will proceed to study in different universities in Dar es Salaam. The scholarship programme – which plays a role in enabling refugees to access higher education across the globe and is part of UNHCR's protection and solutions mandate – is managed by Relief to Development Society (REDESO) with the support of education partners like IRC and Caritas.
- During the reporting period, UNHCR introduced the Refugee Education Management Information System (REMIS). The system will facilitate coherent education data management and use by all actors. As part of the rollout plan, six participants from SCI, Caritas, IRC and UNHCR participated in a training organized by UNHCR. The team is currently working on a rollout plan to launch the system in 2018.
- Plan International conducted mobile Early Childhood Care and Development (ECCD) teaching and learning activities at the extended area of Nduta camp which has an average of 967 (476 boys and 491 girls) children aged between 3 and 5. A total number of 50 mentors (30 females and 20 males) were trained to equip mentors with the skills required to better support adolescent girls in primary and secondary schools.
- Through funding from the French Embassy in Dar es Salaam, a total of 15 (10 male and 5 female) incentive teachers from Nyarugusu and 7 Tanzanian teachers from host community schools attended a two-week French language course at Kasulu Secondary School. The training courses were facilitated by experts from the French Embassy and Education Department tutors from Kasulu and Kabanga Teachers' College.

Identified Needs and Remaining Gaps

- A large portion of the new zones in Nduta camp have no schools. As a result, many children have to attend community-initiated schools although most children in Zone 13 and 20 have not enrolled. The start of the rainy season has also disrupted learning, especially in Nduta camp, where teaching mostly takes place outdoors.
- Despite the double shift strategy (morning and afternoon classes), the programme still requires an additional 533 classrooms to accommodate the Burundian refugee children currently enrolled in school.



HEALTH

Achievements and Impact

- UNHCR supported the expansion of the maternity ward and the laboratory at the main hospital in Nyarugusu camp. The maternity ward's capacity has increased from 20 beds (including 2 delivery beds) to 40 beds (including 4 delivery beds/area). The laboratory has also been expanded to accommodate additional diagnostic services.
- Mortality rates remained stable and above the SPHERE minimum standards during the reporting period.

The Crude Mortality Rate and Under 5 years Mortality Rate remains 0.2/1000/month and 0.6/1000/month respectively. A total of 77,126 consultations were carried out across the three camps in November with the Health Facility Utilization Rate of 2.6. The leading causes of morbidity include Malaria (31%), Upper Respiratory Tract Infection (18%), Lower Respiratory Tract Infection (10%), Urinary Tract Infection (5%), Watery Diarrhea (4%) and others (32%). 3,149 patients were admitted at the in-patient departments and treated across all camps. A total of 1,343 live births were reported in three camps with hospital delivery rate of 97%.

Identified Needs and Remaining Gaps

- Serious challenges in providing essential medicine and medical supplies as supply chain constraints continue.



FOOD SECURITY AND NUTRITION

Achievements and Impact

- Food assistance through the general food distribution remains unchanged from last month at 72% of the full basket.
- Protected food assistance for the more vulnerable segment of the population continues to be delivered at 100%.
- Supplementary feeding activities have been carried out in Nyarugusu, Nduta and Mtendeli for children aged between 6 months and 23 months and 24 months and 59 months, Pregnant and Lactating Women (PLW), and moderate acute malnourished (MAC) children to prevent and/or treat malnutrition, stunting and micronutrient deficiency.
- WFP conducted a Retailer Support Assessment – a needs assessment reviewing the capacity and challenges retailers face – for the refugee and host populations in and around Nyarugusu camp. The objective of the assessment was to appraise and recommend possible areas of intervention in order to strengthen retailer capacity and engagement.
- Post distribution monitoring for supplementary feeding activities kicked off on 29 November 2017. The assessment covers all refugee camps in Tanzania.

Identified Needs and Remaining Gaps

- General food distribution continues at a reduced ration for all commodities at 72% of the full basket in November 2017 due to funding shortfalls.



WATER AND SANITATION

Achievements and Impact

- From 19-26 November 2017, the Lake Tanganyika Water Basin Board and the District Water Engineers from Kibondo, Kakonko and Kasulu visited Nduta, Mtendeli and Nyarugusu camps to provide guidance and oversight on river restoration and assess drainage systems for improvements. UNHCR also invited water experts from Lake Tanganyika Basin Water Board to provide technical support on river restoration.

- Oxfam and Water Mission finalized the installation of solar systems for borehole 5 and commenced installation of the main transmission pipeline from the borehole to the Burundians' water base. This will increase significantly water supply in Nyarugusu camp.
- On 19 November 2017, World Toilet Day commemorations were held across the three camps. The events continued the theme from World Water Day earlier this year on waste water. Innovative WASH demonstrations were carried out to communicate different hygiene messages, including sanitation options in the camps. A number of awards were also presented to winners of various hygiene competitions.

Identified Needs and Remaining Gaps

- Water remains at a critical level in Mtendeli camp. Refugees received an average of 13 litres per person per day due to erratic water supply from the six available boreholes during the reporting period.



SHELTER AND NON FOOD ITEMS (NFIS)

Achievements and Impact

- A total of 206 Transitional Shelters were constructed in November 2017 bringing the total to 2,471 across the three camps.
- AIRD finalized the desilting of 2 culverts and construction of 1 culvert in Mtendeli camp. This will result in improved drainage within the camp during the rainy season.
- Construction of a 6 km road was completed by AIRD during the reporting period in Nyarugusu camp. The construction of speed bumps and road signs was also finalized.
- AIRD completed a shelter baseline survey in Nyarugusu camp to determine refugee addresses, and analyze shelter condition in the camp. Data analysis is currently ongoing.

Identified Needs and Remaining Gaps

- More than 60% of refugees and asylum-seekers continue to live in emergency shelters and tents which are in poor condition. More funding is required to improve the coverage of transitional shelters.
- More land is needed to host asylum-seekers and refugees in Nyarugusu camp.



LIVELIHOODS

Achievements and Impact

- On 8 November 2017, the District Commissioner inaugurated the opening of a Good Neighbors Tanzania (GNTZ) Vocational Training Center (VTC) funded by the Korean International Cooperation Agency (KOICA). The VTC is located in the Mtendeli Common Market area and is accessible to both refugees and the host community. The training programme is expected to commence once the center is registered under the Vocational and Educational Training Authority (VETA).

- During the reporting period, the UN Capital Development Fund (UNCDF) conducted a one-week workshop on savings groups and financial inclusion as a way of sharing best practices for NGO partners working on savings groups in the camps.
- Plan International completed vocational training on batik making for 40 (25 females and 15 males) youth in Nduta camp and bread making for 44 (38 females and 06 males) youth in Mtendeli camp. Start-up kits will be distributed to the graduates in mid-December 2017.

Identified Needs and Remaining Gaps

- Commercial activities have decreased in the Nyarugusu Common Market following the suspension of WFP's Cash Based Transfer (CBT) program.
- Continued water scarcity in the camps, especially in Mtendeli camp, has affected the kitchen garden initiative.



CAMP COORDINATION AND CAMP MANAGEMENT

Achievements and Impact

- UNHCR and DRC distributed core relief items to the entire camp population in Mtendeli camp. Clothes distribution via refugee leaders in Mtendeli and Nduta camps was also completed.
- DRC, NRC and AIRD conducted maintenance work on shelters affected by heavy rains in Mtendeli, Nduta and Nyarugusu camps.
- NRC conducted safety monitoring in Nyarugusu camp. The results of the survey were shared and addressed by the respective organizations.
- NRC distributed core relief items to 30 households with individual protection cases during the reporting period in Nyarugusu camp. 67,327 pieces of soap were also distributed to Burundian refugees in Nyarugusu camp. The community service team under NRC facilitated 19 community mobilization meetings. These meetings are aimed at improving coordination and information sharing among camp stakeholders, including refugees.

Identified Needs and Remaining Gaps

- A shortage of WASH facilities and core relief items, including solar lamps for new arrivals and refugees residing in emergency shelters, are the main gaps requiring urgent attention.
- Inadequate food supply due to reduced rations has resulted in negative coping mechanisms like stealing from other refugees and the host community.
- Worn-out emergency and family shelters need urgent replacement during the rainy season.



ACCESS TO ENERGY

Achievements and Impact

- 1,167 improved mud stoves have been constructed in Nduta and Mtendeli camps and 1,522 insert stoves were installed in Nyarugusu camp in November 2017 to reduce firewood demand in the camps.
- More than 10,000 trees were planted in Nyarugusu camp to reduce environment and energy challenges resulted from use of firewood as a source of energy.

Identified Needs and Remaining Gaps

- Scarcity of firewood and alternative sources of cooking fuel remains a key challenge in all camps.

Working in partnership

- Under the Refugee Coordination Model (RCM), UNHCR and the Government of Tanzania lead and coordinates the response to the Burundi refugee emergency in Tanzania. The RCM is intended to provide an inclusive platform for planning and coordinating refugee response in order to ensure that refugees and other persons of concern receive the protection and assistance they require through the collective efforts and capacities of all partners involved. The 2017 Burundian Regional Refugee Response Plan has been revised in consultation with the key Government actors and humanitarian partners.
- UNHCR works closely with other UN agencies through the UN Reform, Delivering as One initiative and participates in the UN Development Assistance Plan (UNDAP II) 2016-2021, under the Resilience Thematic Results Group. Within this group, UNHCR undertakes action to ensure that a joint vision of protection-sensitive and solutions-oriented assistance to refugees and asylum-seekers is delivered in line with international norms and standards. UNHCR also works with the Ministry of Home Affairs (MHA), its direct Government counterpart in Tanzania, while maintaining productive relations with other Government entities and NGO partners.
- The application of the Comprehensive Refugee Response Framework (CRRF) in Tanzania is advancing. It is led by the Government of the Republic of Tanzania, through the President's Office Regional Administration and Local Government (PO-RALG) and the Ministry of Home Affairs (MHA), and facilitated by UNHCR. The objective of the application of the CRRF in Tanzania is to support the Government in meeting its commitments towards refugees and deliver on its pledges for enhanced protection. The comprehensive response focuses on six thematic areas: reception and admission; emergency response; inclusion and self-reliance; local integration for new Tanzanians; third-country options through resettlement and solutions; and pre-conditions for voluntary repatriation into country of origin.

Partners in the Response:

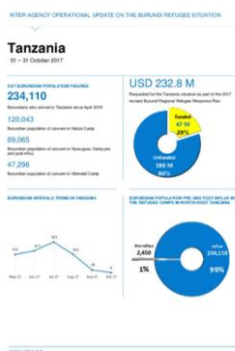
- (MHA) - Refugee Services Department, Ministry of Home Affairs
- Ministry of Health
- Ministry of Education
- (PO-RALG) - President's Office, Regional Administration-Local Government
- ADRA - Adventist Development and Relief Agency
- AIRD - African Initiatives for Relief and Development
- CARITAS
- CEMDO-Community Environmental Management and Development Organization
- CSFM - Centre for the Study of Forced Migration
- CWS - Church World Service
- DRC - Danish Refugee Council
- GNTZ- Good Neighbours Tanzania

- Help Age International
- ICRC - International Committee of the Red Cross
- IFRC - International Federation of the Red Cross and Red Crescent
- IOM - International Organization for Migration
- IRC - International Rescue Committee
- MSF- CH - Médecins Sans Frontières
- NRC - Norwegian Refugee Council
- OXFAM - Oxfam Great Britain
- Plan International
- REDESO - Relief to Development Society
- Save the Children
- TRCS - Tanzanian Red Cross and Red Crescent Society
- TCRS - Tanganyika Christian Refugee Services
- UNFPA - United Nations Population Fund
- UNICEF - United Nations Children's Fund
- Water Mission
- WHO – World Health Organization
- WLAC - Women’s Legal Aid Centre
- WFP- World Food Programme
- UNRC - United Nations Resident Coordinator’s Office
- World Vision

Agencies are very grateful for the financial support provided by donors who have contributed to their activities with unearmarked and broadly earmarked funds as well as for those who have contributed directly to the operation.

The hyperlinks below provide detailed information on the Burundian Refugee Operation in Tanzania from previous updates:

[Edition 48](#): This reporting period covers 01-31 October 2017



[Edition 47](#): This reporting period covers 01-31 September 2017



CONTACTS

Ms. Daria Santoni, UNHCR External Relations Officer, Dar es Salaam
santoni@unhcr.org, Tel: +255 22 2602708-10, Cell +255 784 730 427

LINKS

For more information on the current Burundi refugee situation in Tanzania, kindly click [here](#) to visit the Interagency Information Sharing portal.