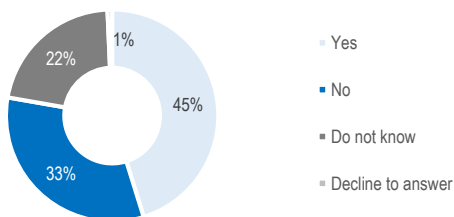


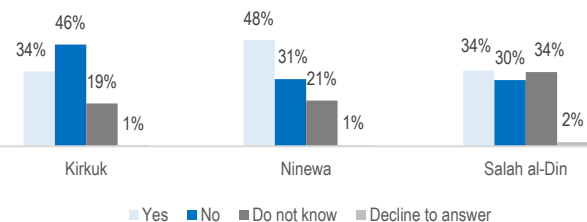
This Intentions Survey was carried out by REACH in partnership with the CCCM Cluster in **15 camps across Ninewa and Kirkuk governorates** hosting a total of **51,111 households (258,501 individuals)**. The survey was administered to **1,535 households**, corresponding to **9,331 individuals** through a random sample<sup>1</sup> between 12 December 2017 and 14 January 2018.

### Area of origin

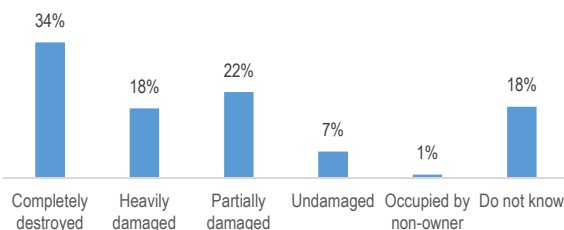
**Are you currently planning on returning to your area of origin?**



**Are you currently planning on returning to your area of origin (AoO)? By governorate of origin<sup>2</sup>**

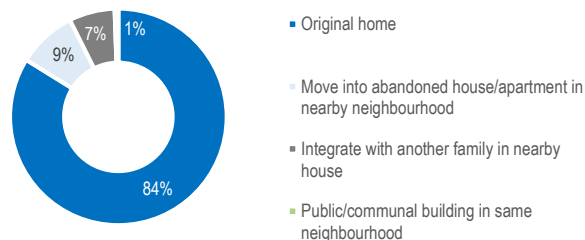


**What is the condition of your house in your area of origin?**

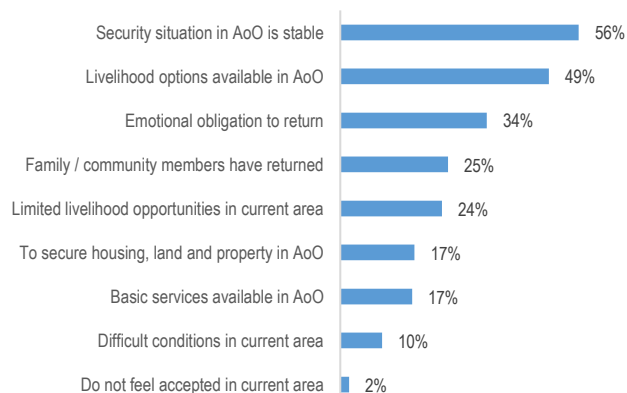


### Planning to return to area of origin

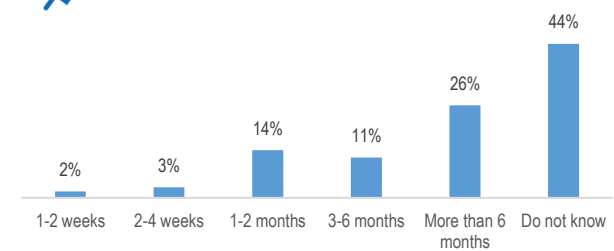
**If yes, will you be going to your original home in your area of origin or will you live somewhere else?**



**If yes, what are the main reasons for why you would like to return to your area of origin?<sup>3</sup>**

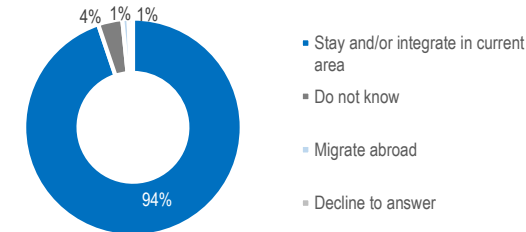


**If yes, when do you think you will return?**

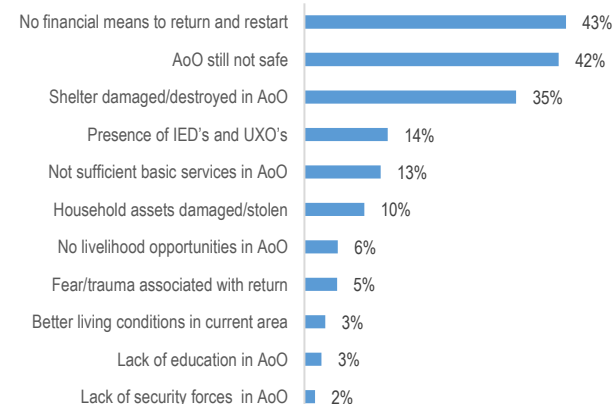


### Not planning to return to area of origin

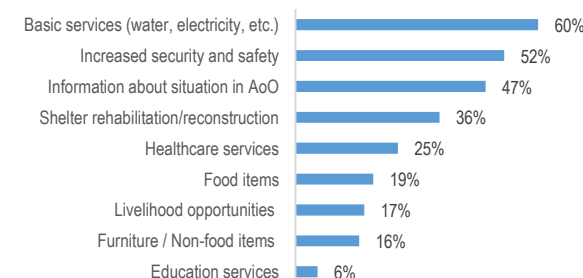
**If not intending to return to your area of origin, where do you intend to go?**



**If no, why can you not return to your area of origin?<sup>3</sup>**



**If it were possible, what are the main needs you or your family require to return in a safe and dignified manner to your area of origin?<sup>3</sup>**



<sup>1</sup> A random GPS sampling technique was applied in each camp, resulting in a 95% confidence level and a 10% margin of error at camp level, as well as a 95% confidence level and a 3% margin of error at the subnational level presented in this factsheet.  
<sup>2</sup> Results from Erbil, Anbar, Diyala and Dahuk governorates are not presented as only 7, 4, 2 and 1 households respectively reported originating from these governorates.  
<sup>3</sup> Respondents could select multiple response options.