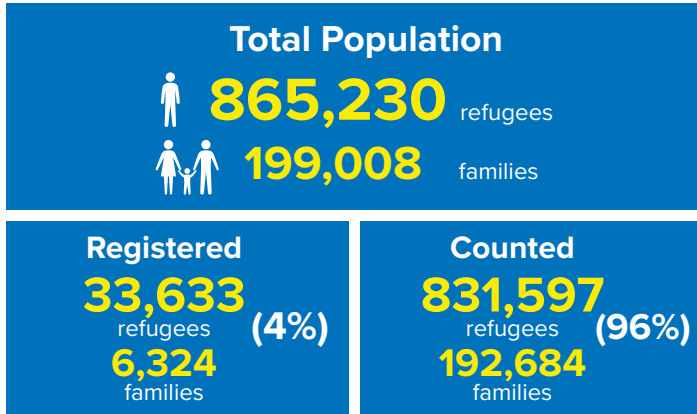
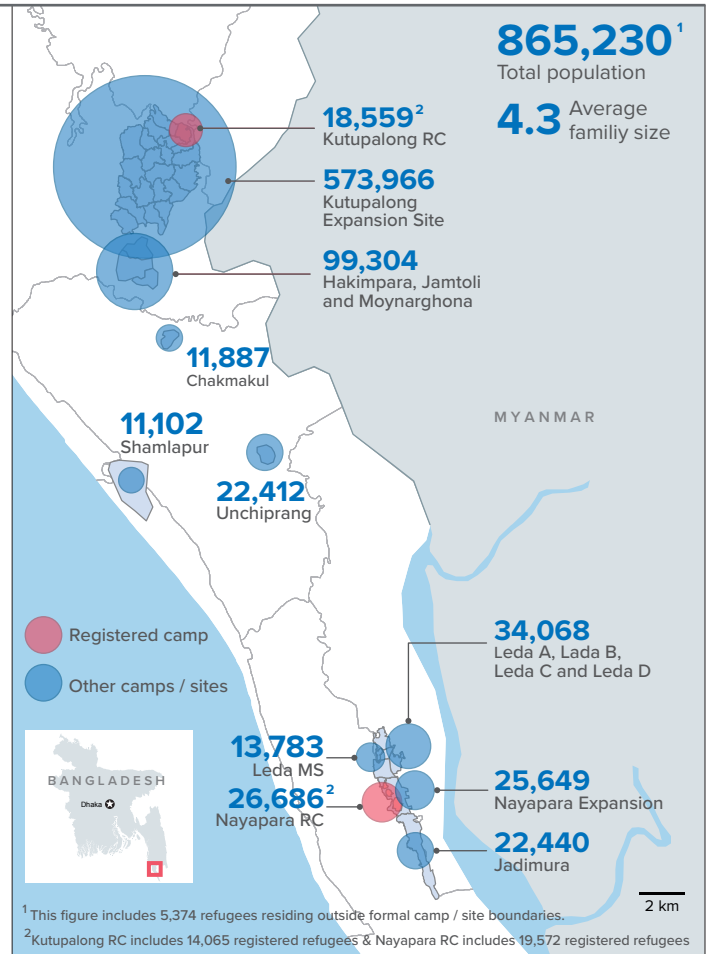
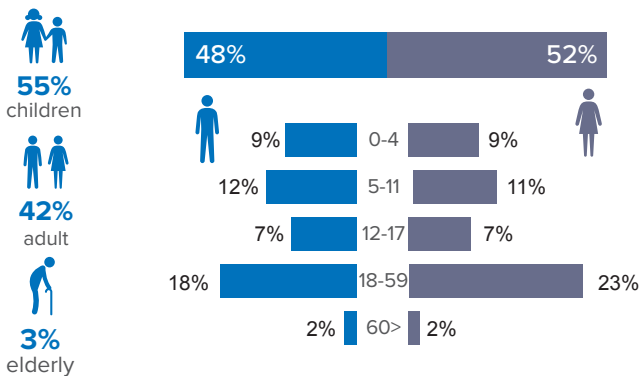


## Population Figure



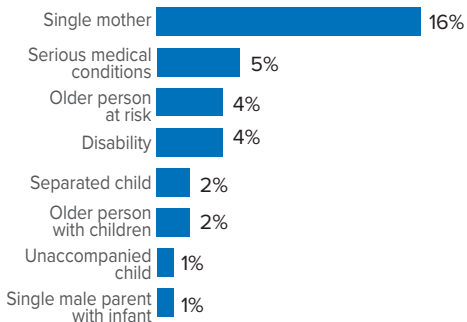
## Demography



The boundaries and names shown and the designations used on this map do not imply official endorsement or acceptance by the United Nations.

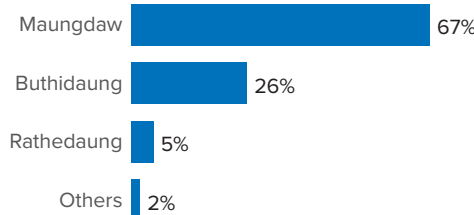
## Specific Needs

**31%** of households have been identified with at least one protection vulnerability\*



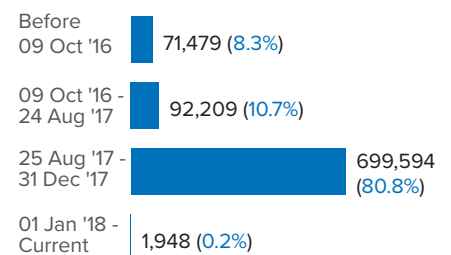
## Place of Origin

**67%** of the Rohingya refugees come from Maungdaw Township



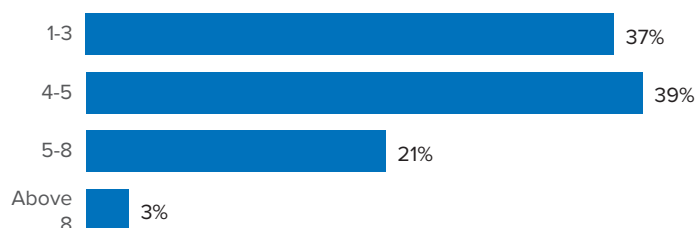
## Period of arrival

**81%** of current population arrived between Aug. and Dec 2017



## Family Size Breakdown

**39%** of the families have a standard family size of 4-5 persons



## Linking Exercise

The Linking Exercise, conducted from December 2017 until February 2018, was a collaborative effort between the Government of Bangladesh and the United Nations High Commissioner for Refugees that aimed to merge the family based Rohingya population data collected through the Family Counting Exercise with attributes of the individual Rohingya population data collected by the Ministry of Home Affairs.

The exercise was conducted with a view to creating a unified dataset with individual data grouped into families which will be used to better protect and assist families.

Camp / Site	Total female new born	Total male new born	Total female infant 0-4	Total male infant 0-4	Total female children 5-11	Total male children 5-11	Total of female children 12-17	Total male children 12-17	Total of female adult 18-59	Total male adult 18-59	Total female elderly 60+	Total male elderly 60+	Total Families	Total Individuals
Camp 15	898	839	3,293	3,427	5,012	5,204	3,201	3,415	10,781	8,587	837	852	10,458	46,346
Camp 13	703	749	3,039	3,138	4,444	4,707	2,728	2,796	9,587	7,616	735	677	9,587	40,919
Camp 1W	757	756	2,882	2,898	4,336	4,390	2,643	2,742	9,452	7,605	843	738	9,234	40,042
Camp 3	684	736	3,035	3,084	4,179	4,412	2,518	2,685	9,341	7,299	677	587	9,109	39,237
Camp 7	723	731	2,996	3,078	4,218	4,433	2,656	2,612	9,166	7,231	724	662	9,319	39,230
Camp 1E	649	732	2,731	2,899	4,175	4,398	2,608	2,729	9,110	7,635	796	688	8,991	39,150
Camp 9	619	563	2,782	2,803	4,008	4,034	2,489	2,505	8,536	6,939	715	690	8,648	36,683
Camp 10	669	653	2,716	2,860	3,555	3,940	2,244	2,212	8,192	6,410	643	556	8,060	34,650
Camp 8E	528	531	2,425	2,512	3,592	3,707	2,454	2,395	7,866	6,296	593	587	7,730	33,486
Camp 11	584	623	2,473	2,529	3,533	3,759	2,228	2,304	7,623	6,219	562	515	7,483	32,952
Camp 8W	554	531	2,598	2,568	3,430	3,615	2,042	2,157	7,612	6,084	606	544	7,420	32,341
Camp 14	556	579	2,248	2,486	3,319	3,667	2,235	2,231	7,157	5,753	593	520	6,900	31,344
Camp 4	545	572	2,187	2,329	3,259	3,405	1,886	1,894	6,909	5,399	462	370	7,191	29,217
Camp 18	485	518	2,269	2,335	2,965	3,091	1,855	1,748	6,622	5,182	362	382	6,801	27,814
Camp 2E	521	498	2,057	2,109	3,024	3,323	1,698	1,744	6,616	5,024	494	421	6,573	27,529
Nayapara RC*	90	89	1,608	1,678	2,913	3,037	2,352	2,369	6,966	4,761	435	396	5,716	26,686
Nayapara Exp	436	365	1,823	1,904	2,926	3,169	1,961	1,811	6,190	4,294	419	351	5,887	25,649
Camp 5	455	492	2,006	2,088	2,816	2,880	1,580	1,653	6,070	4,722	462	420	6,153	25,644
Camp 6	514	442	1,971	2,090	2,665	2,833	1,428	1,533	5,675	4,499	427	384	5,694	24,461
Camp 2W	400	393	1,754	1,861	2,706	2,973	1,520	1,525	5,612	4,502	481	361	5,458	24,088
Jadimura	367	347	1,747	1,747	2,600	2,811	1,547	1,634	5,237	3,763	331	309	4,984	22,440
Unchiprang	413	387	1,613	1,808	2,573	2,644	1,696	1,688	4,877	4,003	378	332	4,619	22,412
Camp 12	370	359	1,620	1,703	2,371	2,657	1,577	1,535	5,119	3,999	407	352	4,896	22,069
Camp 16	434	394	1,591	1,673	2,332	2,545	1,523	1,442	4,968	4,006	383	323	4,830	21,614
Camp 19	314	302	1,429	1,514	2,049	2,271	1,322	1,358	4,397	3,438	314	274	4,354	18,982
Kutupalong RC*	85	71	1,111	1,299	1,981	2,110	1,562	1,515	4,618	3,642	289	273	3,726	18,559
Leda A	255	259	1,100	1,154	1,566	1,701	1,009	987	3,357	2,489	219	209	3,379	14,305
Leda MS	198	188	839	909	1,761	1,786	925	1,009	3,247	2,573	211	137	3,035	13,783
Chakmarkul	222	210	857	924	1,293	1,357	740	800	2,857	2,322	174	131	2,894	11,887
Shamlapur	183	202	818	853	1,472	1,507	637	656	2,723	1,714	173	164	2,693	11,102
Leda D	143	176	760	733	1,170	1,299	785	722	2,346	1,680	177	109	2,281	10,100
Leda C	104	96	483	533	821	816	421	465	1,624	1,088	116	98	1,617	6,665
No Camp**	85	97	413	448	538	552	395	364	1,268	1,020	107	87	1,253	5,374
Camp 17	64	90	362	381	530	544	320	304	1,109	848	69	56	1,127	4,677
Leda B	45	50	210	246	328	311	246	217	735	496	68	46	712	2,998
Camp 20	18	12	60	53	101	91	46	49	193	151	9	12	196	795
<b>Total</b>	<b>14,670</b>	<b>14,632</b>	<b>63,905</b>	<b>66,654</b>	<b>94,563</b>	<b>99,979</b>	<b>59,077</b>	<b>59,805</b>	<b>203,754</b>	<b>159,288</b>	<b>15,290</b>	<b>13,613</b>	<b>199,008</b>	<b>865,230</b>

\*Kutupalong RC includes 14,065 registered refugees & Nayapara RC includes 19,572 registered refugees

\*\*This represents refugees residing outside formal camp / site boundaries

Arrival Month	Before 09 Oct 2016		09 Oct 2016 - 24 Aug 2017		25 Aug 2017 - 31 Dec 2017		01 Jan 2018 - Current date		Total	
Camp / Site	Total Families	Total Individuals	Total Families	Total Individuals	Total Families	Total Individuals	Total Families	Total Individuals	Total Families	Total Individuals
Camp 15	11	47	717	3,173	9,730	43,126	–	–	10,458	46,346
Camp 13	11	42	791	3,455	8,784	37,418	1	4	9,587	40,919
Camp 7	120	529	1,052	4,541	8,144	34,149	3	11	9,319	39,230
Camp 1W	19	75	1,025	4,391	8,187	35,570	3	6	9,234	40,042
Camp 3	15	71	955	4,197	8,134	34,950	5	19	9,109	39,237
Camp 1E	35	168	1,586	6,816	7,364	32,143	6	23	8,991	39,150
Camp 9	89	349	2,147	8,740	6,410	27,586	2	8	8,648	36,683
Camp 10	10	45	628	2,678	7,415	31,902	7	25	8,060	34,650
Camp 8E	38	156	897	3,936	6,785	29,352	10	42	7,730	33,486
Camp 11	1	3	1,148	5,105	6,334	27,844	–	–	7,483	32,952
Camp 8W	22	104	658	2,884	6,697	29,195	43	158	7,420	32,341
Camp 4	14	61	268	1,102	6,848	27,806	61	248	7,191	29,217
Camp 14	7	25	597	2,774	6,295	28,540	1	5	6,900	31,344
Camp 18	14	60	173	717	6,592	26,956	22	81	6,801	27,814
Camp 2E	3,149	13,373	1,624	6,888	1,800	7,268	–	–	6,573	27,529
Camp 5	18	69	551	2,356	5,584	23,219	–	–	6,153	25,644
Nayapara Exp	46	236	493	2,203	5,335	23,165	13	45	5,887	25,649
Nayapara RC*	3,753	19,772	249	970	1,693	5,896	21	48	5,716	26,686
Camp 6	57	257	1,081	4,872	4,554	19,323	2	9	5,694	24,461
Camp 2W	1,809	8,322	1,353	5,914	2,295	9,848	1	4	5,458	24,088
Jadimura	48	230	485	2,279	4,372	19,627	79	304	4,984	22,440
Camp 12	3	15	237	1,076	4,652	20,958	4	20	4,896	22,069
Camp 16	5	25	282	1,251	4,543	20,338	–	–	4,830	21,614
Unchiprang	5	33	211	1,024	4,402	21,352	1	3	4,619	22,412
Camp 19	–	–	373	1,693	3,957	17,180	24	109	4,354	18,982
Kutupalong RC*	2,931	15,396	194	774	601	2,389	–	–	3,726	18,559
Leda A	10	38	330	1,447	3,031	12,790	8	30	3,379	14,305
Leda MS	2,092	10,155	168	652	775	2,976	–	–	3,035	13,783
Chakmarkul	8	36	149	651	2,729	11,171	8	29	2,894	11,887
Shamlapur	260	1,195	287	1,222	2,130	8,616	16	69	2,693	11,102
Leda D	53	270	255	1,133	1,970	8,684	3	13	2,281	10,100
Leda C	59	242	100	402	1,455	6,012	3	9	1,617	6,665
No Camp**	11	54	144	626	1,095	4,681	3	13	1,253	5,374
Camp 17	4	17	50	202	923	3,855	150	603	1,127	4,677
Leda B	1	9	15	60	693	2,919	3	10	712	2,998
Camp 20	–	–	1	5	195	790	–	–	196	795
<b>Total</b>	<b>14,728</b>	<b>71,479</b>	<b>21,274</b>	<b>92,209</b>	<b>162,503</b>	<b>699,594</b>	<b>503</b>	<b>1,948</b>	<b>199,008</b>	<b>865,230</b>

\*Kutupalong RC includes 14,065 registered refugees & Nayapara RC includes 19,572 registered refugees

\*\*This represents refugees residing outside formal camp / site boundaries

Figures of families with at least one person with a specific need. More than one specific need may be present within one family

Camp / Site	Number of child headed families	Number of families with separated children	Number of families with unaccompanied children	Number of families with a person with disability	Number of families with older person at risk	Number of families with older person at risk with children	Number of families with people with serious medical condition	Number of single male parents with infants	Number of single female parent	Number of families with people with specific needs
Camp 15	252	219	56	319	523	188	409	60	1538	2984
Camp 1E	285	169	41	549	452	326	481	55	1085	2842
Nayapara RC	135	173	41	605	170	51	1202	33	1199	2835
Camp 7	170	220	28	362	375	248	471	113	1221	2789
Camp 13	312	251	79	310	395	208	344	64	1430	2761
Camp 1W	123	162	32	392	440	213	448	65	1236	2714
Camp 3	242	197	62	372	346	292	330	65	1429	2656
Camp 10	325	137	86	428	374	270	552	102	1127	2619
Camp 9	388	152	75	387	393	265	497	100	1062	2544
Camp 8E	373	171	78	374	397	261	442	91	1135	2500
Camp 4	239	212	87	152	236	175	221	102	1327	2396
Camp 18	208	157	62	251	226	173	313	85	1180	2166
Camp 11	235	176	64	294	314	166	251	72	1139	2087
Camp 2E	202	150	47	250	236	188	304	46	1062	2006
Camp 5	214	164	73	212	291	173	212	64	1117	1996
Nayapara Exp	122	103	39	183	228	67	142	48	1298	1965
Camp 14	166	121	47	189	322	137	309	42	970	1870
Camp 6	158	161	44	222	240	126	321	40	798	1791
Camp 8W	236	87	37	249	265	160	298	80	722	1666
Jadimura	89	82	18	160	155	58	102	40	1148	1638
Camp 2W	91	101	16	271	226	110	254	55	704	1592
Kutupalong RC	68	60	14	352	103	37	772	9	561	1572
Camp 12	108	81	34	144	202	104	139	34	785	1356
Camp 16	108	92	22	171	202	82	162	37	710	1322
Camp 19	133	117	30	181	208	80	115	44	688	1311
Leda A	113	82	37	113	124	66	135	19	708	1188
Unchiprang	95	70	19	160	156	77	153	16	581	1118
Shamlapur	58	50	12	75	99	43	70	11	756	1028
Leda MS	74	52	28	129	100	31	80	17	483	845
Chakmarkul	80	58	22	106	85	32	104	32	449	828
Leda D	74	42	25	72	78	37	86	18	529	795
Leda C	62	50	9	69	74	26	60	10	438	665
No Camp	48	32	11	49	97	16	62	5	187	408
Camp 17	22	18	8	18	36	18	25	3	136	344
Leda B	14	9	6	20	34	13	14	3	191	262
Camp 20	5	5	3	5	4	2	4	—	21	41
<b>Total</b>	<b>5627</b>	<b>4183</b>	<b>1392</b>	<b>8195</b>	<b>8206</b>	<b>4519</b>	<b>9884</b>	<b>1680</b>	<b>31150</b>	<b>61500</b>

Using GIS technology, polygons of the camps were established. The GPS coordinates of each family were then mapped into the polygons, in order to determine the total number of families and individuals within each camp.

Based on the high quality drone imagery and field mapping conducted by Site Planning unit, the total usable area and non-usable area was calculated jointly with IOM. While the usable area refers to areas populated by refugees, the non-usable areas refers to flood and landslide prone areas.

**Note:** The recommended minimum surface area is 45 m<sup>2</sup> per person when planning a refugee camp (including kitchen / vegetable gardening space). However the actual surface area per person (excluding garden space) should not be less than 30 m<sup>2</sup> per person.

Camp	Total Families	Total Individuals	Useable area (sqm)	% useable area	Unuseable area (sqm)	Average usable area per person (sqm)
Camp 20	196	795	230,466.42	46%	268,065.66	289.89
Camp 17	1,127	4,677	105,265.74	12%	773,225.50	22.51
Camp 12	4,896	22,069	487,402.76	77%	143,735.69	22.09
Kutupalong RC*	3,726	18,559	340,824.72	89%	40,514.96	18.36
Camp 19	4,354	18,982	340,459.65	48%	373,588.12	17.94
Camp 1E	8,991	39,150	608,228.12	96%	25,354.87	15.54
Camp 13	9,587	40,919	566,311.36	76%	180,248.89	13.84
Camp 8E	7,730	33,486	433,694.96	45%	522,855.70	12.95
Camp 4	7,191	29,217	358,275.42	32%	765,423.70	12.26
Camp 5	6,153	25,644	312,596.39	51%	302,700.82	12.19
Camp 1W	9,234	40,042	453,408.96	85%	80,984.99	11.32
Camp 2W	5,458	24,088	251,214.12	63%	147,230.93	10.43
Camp 9	8,648	36,683	364,589.86	56%	284,492.95	9.94
Camp 3	9,109	39,237	370,579.30	81%	89,175.01	9.44
Camp 11	7,483	32,952	291,155.08	62%	174,864.36	8.84
Camp 2E	6,573	27,529	231,810.44	60%	157,511.49	8.42
Camp 8W	7,420	32,341	261,919.44	34%	510,261.66	8.10
Camp 10	8,060	34,650	275,403.52	56%	220,741.93	7.95
Camp 18	6,801	27,814	215,867.55	29%	535,809.11	7.76
Camp 7	9,319	39,230	187,746.25	26%	526,339.25	4.79
Camp 6	5,694	24,461	15,549.13	4%	346,464.55	0.64

\*Kutupalong RC includes 14,065 registered refugees