

The international standards and principles of UNHCR's protection and assistance related to voluntary repatriation are:

Voluntariness: The UNHCR protection counseling must confirm the voluntariness of a decision to return. A UNHCR Voluntary Repatriation Form (VRF) will be used.

Safety: Safety and security in the area of return are of high importance, and UNHCR will not facilitate return if there are significant protection concerns. Refugees must carefully examine this question and obtain as much information as possible in regards to their security.

Dignity: It is crucial throughout the entire return and reintegration process that refugees' dignity is upheld. This includes access to national and local-level public services and enjoying their full rights as citizens of Myanmar.



UNHCR in Myanmar

UNHCR Yangon

287 Pyay Road, Myaynigone, Sanchaung, Yangon
Tel: 01-524022, 01-524024-26

UNHCR Loikaw

51(A), Anawyahta Street, Naung Yah (B) Ward, Loikaw
Tel: 083-2222608, 094-9608781

UNHCR Hpa-An

219 A, Bogyoke Street (main road), Ward 9, Hpa An
Tel: 098-626421, 098-610120

UNHCR Dawei

48, Arzani Road, Kanyung Ward, Dawei
Tel: 059-22607, 098-610124

Visit us at:

www.commonservice.info
www.facebook.com/commonservice
www.facebook.com/commonserviceburmese
www.facebook.com/commonservicekaren

Information Management Unit - Mae Sot

Thailand - Myanmar Border Operation
imumaesot@unhcr.org



Regional funding and funding for Thailand was also received through private donations from Italy, Japan, the Republic of Korea, Spain, Sweden, Thailand, and the United States of America.



Thailand-Myanmar Assistance Package For Facilitated Voluntary Repatriation



Upon Departure (in Thailand)

1. UNHCR Protection counseling



Each household will undergo protection counseling by UNHCR to confirm voluntariness, explain the facilitated VolRep process including assistance, and share any available information regarding conditions in the area of return. Persons with specific medical needs will be referred to health agencies for further assessment and support. A Voluntary Repatriation Form (VRF) will be signed by each household and information will be sent to the Government of the Union of Myanmar (GoUM) and the Royal Thai Government (RTG) to obtain their approval for the return.



2. Mine-risk education

Mine-risk education sessions will be organized at the Voluntary Repatriation Centers (VRCs) by Humanity & Inclusion (HI). This is mandatory for any individual returning.

3. Transport: organized and cash grant



IOM will arrange transport from the camp to the border upon request from UNHCR-RTG. A cash grant will be provided to each individual to assist with transport from the Thai border to their final destination in Myanmar.

4. Reintegration grant



A flat-rate fixed amount for each adult and child will be given to a returning refugee in order to assist with the immediate costs associated with settling-in back home.

5. Cash assistance for food



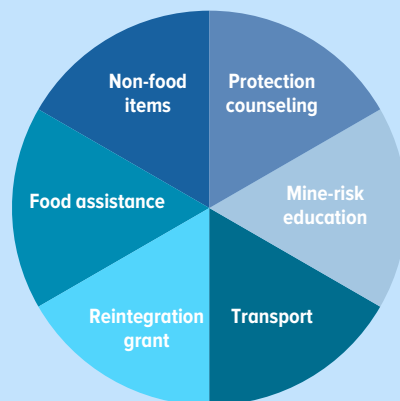
The World Food Program (WFP) will provide six months of food support in cash through IOM upon departure.

6. Non-food items



One mosquito net will be given for two persons and one sanitary kit for every woman. Both items will be distributed by IOM at the VRC prior to the day of departure.

NOTE: Assistance is one time only and will be provided on the day prior to or on the day of departure (and recorded on the VE card).



Throughout all the phases and aspects of the voluntary return and reintegration process, UNHCR will pay special attention to the needs of the most vulnerable individuals and their families.

Upon Return (in Myanmar)

In Myanmar, UNHCR supports the authorities to assist returning refugees, together with other actors. UNHCR monitors their return and makes referrals to service providers if a returnee needs assistance. UNHCR may also implement reintegration projects in selected return areas, using a community-based approach. Areas of assistance are summarized below:

1. Safety



An assessment of the situation in the area of return will be made. UNHCR will work closely with organizations dealing with landmine issues and provide mine-risk education to returnees.

2. Civil documentation



UNHCR may assist those who face difficulties in obtaining civil documents. It is the responsibility of returning refugees to obtain their Myanmar identity documents.

3. Housing, land and property



UNHCR may provide information on how to register land and provide advice on resolving concerns related to land and property.

4. Public services



It is expected that all publicly-provided social services such as health and education available to local residents, will also be available to returning refugees. UNHCR can provide information on how to access social services available in local areas.

5. Livelihoods



Community-based livelihood projects within the areas of return may be provided by UNHCR and/or other organizations.