

## Imvepi Refugee Settlement

### Health and Nutrition updates-Week 10 (1<sup>st</sup> to 7<sup>th</sup> March 2018)

#### Health & Nutrition

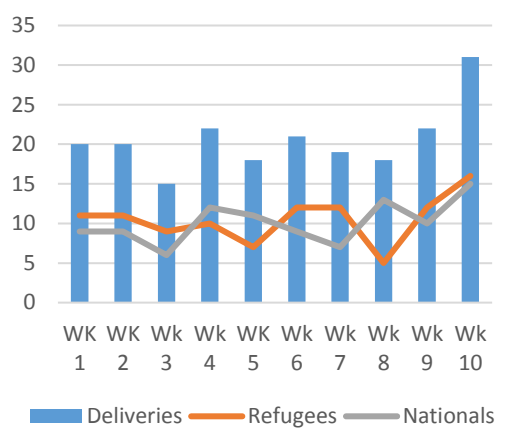
#### Health

**Partners and Agencies:** UNHCR, UNFPA, UNICEF, ADLG/DHO, Medical Teams International, Save the Children International (SCI), Medi Sans Frontiers France (MSF-F), Global Refuge International (GRI), CARE Uganda International, CUAMM Doctors with Africa, Uganda Red Cross Society (URCS), The Transcultural Organization (TPO), Infectious Disease Institute (IDI)

<b>Total OPD/ IPD Consultations</b>	<ul style="list-style-type: none"> <li>▪ <b>OPD Consultations:</b> 2,490 (2,146 refugees and 344 nationals) new OPD consultations were made in week 10 compared to 2,825 in week 09. Of which 2,146 (86%) were to refugees and 344 (14%) to nationals.</li> <li>▪ <b>Mental Health and Psychosocial Support Services (MHPSS):</b> 13 new clients and 07 revisit clients received MHPSS in week 10 compared to 14 in week 09. The major psychiatric cases being post-traumatic stress disorder, depression and depression.</li> <li>▪ <b>IPD admissions: 87</b> (53 refugees and 34 nationals) new In-patients admissions were made in week 10 compared to 67 in week 09.</li> <li>▪ <b>New referrals:</b> 29 (19 refugees and 10 national) new referrals were made in week 10 to Arua Regional Referral Hospital compared to 07 in week 09.</li> </ul>														
<b>Morbidity</b>	<p><b>Proportional Morbidity:</b></p> <ul style="list-style-type: none"> <li>• 383 (15%) confirmed malaria cases</li> <li>• 788 (32%) Acute RTI</li> <li>• 148 (6%) Watery Diarrhoea</li> <li>• 09 bloody diarrhoea cases.</li> </ul>			<p><b>Vaccination; Deworming ; Vitamin A</b></p>			<p><b>Vaccination, deworming &amp; vitamin A supplementation for new arrivals in Imvepi RC:</b></p> <ul style="list-style-type: none"> <li>• 357 new arrival children &lt;5 year were vaccinated in week 09 compared to 317 in week 09. (235 against measles, 122 against Polio, 08 mothers against T.T, 98 received Vitamin A Supplementation and 106 dewormed)</li> </ul> <p><b>Expanded programme on Immunization:</b></p> <ul style="list-style-type: none"> <li>• <b>439</b> (270 refugees and 169 nationals) individuals were vaccinated in week 10 compared to 361 in week 09.</li> <li>• <b>109</b> received vitamin A supplementation in week 10 compared to 102 in week 09.</li> <li>• <b>138</b> mothers received TT in week 10 compared to 110 in week 09.</li> </ul>								
<b>Disease</b>	<b>AFP</b>	<b>Animal bites</b>	<b>Cholera</b>	<b>Bloody diarrhoea</b>	<b>Water y diarrhoea</b>	<b>G u i n e a W o r m</b>	<b>Malar ia</b>	<b>M e a s l e s</b>	<b>M E N I N G I T I S</b>	<b>Yello w Feve r</b>	<b>N N T</b>	<b>V H F &amp; R V F</b>	<b>T y p h o i d</b>	<b>M DR TB</b>	<b>Human Influenza samples</b>

<b>cases</b>	0	0	0	09	148	0	383	0	0	0	0	0	0	0	
<b>Deaths</b>	0	0	0	0	0	0	0	0	0	0	0	0	0	0	
<b>Suspect cholera Cases Identified in the Day</b>	0					<b>Suspect cholera Cases Undergoing Treatment</b>					0				
<b>Suspect meningitis Cases Identified in the day</b>	0					<b>Suspected meningitis Cases Undergoing Treatment</b>					0				
<b>Suspect measles Cases Identified in the day</b>	0					<b>Suspected measles Cases Undergoing Treatment</b>					0				
<b>Suspected VHF/RVF identified in the week</b>	0					<b>Suspected VHF/RVF on treatment in the week</b>					0				
<b>Mortality</b>	<p><b>Deaths:</b> 02 (02 refugee and 0 national) death was reported in week 10 compared to 01 in week 09. One 01 of an individual less than 5 years and 01 above 5 years. 01 from health facility and 01 from community. 01 neonatal death and 00 maternal death.</p> <p><b>Crude mortality rate (CMR):</b> 0.02 deaths/10,000/day in week 10 compared to 0.01 deaths/10,000/day in week 09.</p> <p><b>Under Five Mortality (U5MR):</b> 0.06 deaths/ 10,000/ day in week 10 compared to 0.0/10,000/ day in week 09.</p>					<b>Health Workers per 10,000 Population</b>					Total # skilled staff 53 (Medical officer, clinical officers, Nurses, and midwives). This translates to 4.2/10,000 population. Given the current population of Imvepi 127,223 (25,501 children < 5 years) as at 19 <sup>th</sup> February 2018.				
<b>Reproductive Health, HIV and AIDS and TB care</b>	<ul style="list-style-type: none"> <li>▪ <b>Total ANC:</b> 214 (123 refugees and 91 nationals) pregnant women attended ANC in week 10 compared to 256 in week 09</li> <li>▪ <b>First ANC visits: 119</b> (70 refugees and 49 nationals) pregnant mothers attended first ANC in week 10 compared to 137 in week 09.</li> <li>▪ <b>Fourth ANC Visits: 17</b> (14 refugees and 03 nationals) pregnant women attended 4<sup>th</sup> ANC sessions in week 10 compared to 30 in week 09.</li> </ul>														
					<b>Labour and delivery care:</b>					<b>Elimination of mother to child HIV transmission (eMTCT):</b>					
										<ul style="list-style-type: none"> <li>▪ <b>119</b> (70 refugees and 49 nationals) nationals) pregnant mothers who attended ANC1</li> </ul>					

**Weekly deliveries by skilled health workers in Imvepi settlement**



- **31** (16 refugees and 15 nationals) deliveries were conducted by skilled health workers in week 10 compared to 22 in week 09.

**Post Natal Care:** 33 (17 refugees and 16 nationals) lactating mothers attended PNC in week 10 compared to 57 in week 09.

**Clinical Management of rape:**

- 00 reported SGBV cases.

were provided HIV testing services in week 10 and all found HIV negative compared to 137 in week 09. No (00) HIV positive delivery took place, therefore, we registered 100% coverage of eMTCT.

**HIV and AIDS services:**

- **04 (03 refugees and 01 national)** individuals was newly tested HIV positive in week 10 as was in week 09.
- 1,051 (587 refugees and 464 nationals) individuals were offered HIV testing services in week 10 compared to 2,868 in week 09.
- 04 (03 refugees and 01 national) newly identified HIV positive refugee was initiated on HIV care and support.
- **6,508** pieces of condoms were distributed for HIV prevention in the community in week 10 compared to 13,468 in week 09.

**TB treatment and care:**

- No (00) individual was newly diagnosed with active TB in week 10 compared to 01 in week 09.

▪ **Achievements and Impact**

**OPD Consultations:**

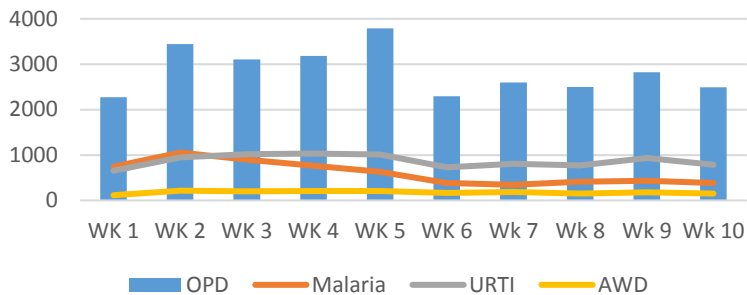
- 2,490 (2,146 refugees and 244 nationals) new OPD consultations were made in week 10 compared to 2,825 in week 09. Of which 86% of the new consultations were to refugees and 14% to nationals. The weekly proportional morbidity shows that the leading cause of morbidity in the week is Respiratory tract infections with 32%, malaria accounted for 15% and Watery Diarrhoea/WD remained at 6%.
- Therefore malaria, URTI and diarrhoeal diseases accounted for 53% in week 10 compared to 55% in week 09.
- The incidence of malaria, acute RTI and watery diarrhoea is estimated at 4 cases/1000 persons/week, 6 cases/ 1,000 persons and 2 cases/1000 persons /week respectively. During the week preventive measures through 110 active VHT's including mobile clinics and outreaches for treatment of malaria and other conditions were conducted.

▪ **Mortality and Morbidity:**

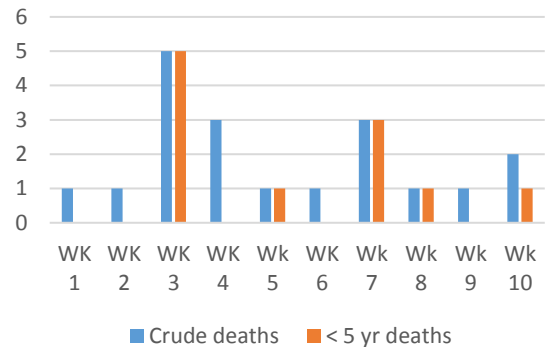
**Weekly OPD Consultations and Morbidity trends in Imvepi settlement**

**Weekly Mortality trends in Imvepi settlement**

### Weekly OPD Consultations and Morbidity in Rhino Camp settlement



### Weekly mortalities in Imvepi settlement



- 02 (02 refugee and 00 national) death was reported from Imvepi settlement in week 10 compared to 01 in week 09. One 01 death among under 5 years and 01 among above 5 years. 00 deaths from the health facilities and 01 from the community. 01 neonatal death and 00 maternal deaths. Therefore, Crude Mortality Rate (CMR) remained 0.02 deaths/10,000/day and under-5 year mortality ratio (U5MR) was at 0.06 deaths/10,000/day below the emergency threshold of 1 and 2 deaths/10,000/day respectively. The cause/ probable causes of mortality being 01 injuries during mob justice and 01 neonatal death.

#### **Community based Control of Disease Outbreaks:**

- 00 suspected measles cases were reported from Imvepi settlement in week 10 from week 05.
- 00 suspected rift valley fever/ viral haemorrhagic fever cases was reported in week 10 from week 08.
- Surveillance was further maintained through training of 110 village health teams (VHT's) spread out in the settlement and weekly analysis of Health Information system reporting continued in the week(see priority diseases surveillance).

#### **Medical screening of new arrivals:**

- 416 new arrivals were medically screened at the Kuluba in week 10 compared to 295 in week 09.
- 463 individuals in Imvepi reception clinic were medically screened in week 10 compared to 401 in week 09.

#### **TB screening at Imvepi reception:**

- Routinely all coughing new arrivals are taken sputum samples for geneXpert through hub laboratory in Arua regional referral hospital and Yumbe hospital.

#### **Other updates and activities of the week:**

- Health messages for new arrivals regarding morbidity, healthcare in the settlements passed to new arrivals while in transit to the settlements.
- MSF-F continued to conduct surveillance, mental health and SGBV support services in Imvepi settlement in week 10.
- Global Refuge International (GRI) continued to conduct routine OPD services at point I zone 2 and supported 376 individuals in week 10 compared to 408 in week 09.
- The health facilities that had previously reported stock out of BCG vaccines, received supplies in week 10.

#### **Mental Health and Psychosocial support services:**

- TPO continued to support mental health and psychosocial support services. 12 cases received mental health and psychosocial support in week 10 and cumulatively TPO reached 119 individuals with mental disorders.

#### **Identified Needs and Remaining Gaps:**

- No major challenges reported in week 10.

### Nutrition

**Partners and Agencies:** World Food Programme (WFP), UNHCR, UNICEF, ADLG/DHO, Medical teams international, CUAMM Doctors with Africa, Action Against Hunger (ACF), Global Refuge International (GRI), and Save the Children international (SCI).

<p><b>Imvepi Reception Center</b> Weekly Proxy Global Acute Malnutrition among children 6-59 months, MUAC (&lt; 125 mm and/or oedema) <b>Imvepi reception centre screened 98 new arrivals and (09 MAM and 01 SAM)</b> <b>09 pregnant and lactating mothers (00 &lt; 23 cm and 09 &gt; 23 cm)</b></p>	<b>10.2%</b>	<p><b>Community:</b> overall weekly Proxy Global Acute Malnutrition among children 6-59 months, MUAC (&lt; 125mm and/or oedema) Overall settlement 1,011 (919 refugees and 92 nationals) screened of which (09 MAM and 03 SAM)</p>	<b>1.2%</b>
--	--------------	--	-------------

### Food Assistance

<p>General Food Distribution <b>Imvepi</b> (kilocalories/person/day) Cereals (sorghum) 12kg, Pulses 2.4Kg, Corn soya blend (CSB) 1.5Kg, Vegetable oil 0.9Kg, Salt 0.15Kg. 2100Kcal/person/day FBM: 94% within acceptable and 6% above and 0% below</p>	2100	<p>New arrivals ration (kilocal /person/day)</p>	2100
--	------	--	------

### Narrative

#### **Achievements and Impact**

- 98 children less than 5 years and 09 pregnant and lactating women (PLW) in week 10 compared to 69 less than 5 years and 08 PLW were screened for their nutritional status respectively at Imvepi reception center in week 09. Four 09 moderately malnourished (MAM) and 01 severely malnourished (SAM) and 00 mother pregnant and lactating had MUAC < 23 cm (moderately malnourished).
- Similarly, in the entire Imvepi settlement, 1,011 children under 5's nutritional status was assessed in week 10 compared to 1,411 in week 09. There were 12 MAM and 03 SAM cases identified. Overall weekly proxy Global acute malnutrition among children 6-59 months screened in Imvepi settlement in week 10 was 1.2% compared to 1.1% in week 09.
- 09 and 03 new malnourished children were enrolled in SFP and OTP in week 10 compared to 12 and 03 in week 09 respectively. All the identified malnourished were initiated on therapeutic feeds and have been linked to Omugo extension settlement.
- In week 10, twenty four – 24 (18 refugees and 06 nationals) were exited from targeted SFP and 21 (15 refugees and 06 nationals) were cured and 03 (03 refugees and 00 nationals) defaulters registered and 00 refugee non-respondents. Therefore recovery rates for refugees was 21(87.5%) and for nationals 06 (100%). Defaulter rates was 03 (14.2%) for refugees and 0(0%) for nationals. Death rates among both refugees and nationals was 0(0%) and non-response rates of 0(0%) for refugees and 0(0%) for nationals.
- Similarly, 02 (02 refugees and 00 nationals) individuals were exited from the OTP in week 10 compared to 03 in week 09. All 02 (02 refugees and 00 national) cured and recovery rates of 2(100%), 0(0%) defaulter rates and 0 (0%) non-response rate.

#### **Community nutrition activities**

#### **Maternal Child Health Nutrition:**

- MTI continued to conduct maternal child health nutrition for pregnant and lactating mothers and children 6-23 months in the settlement.

#### **Infant and Young Child in Emergency activities:**

#### **IYCF through mother baby areas:**

- During the week SCI continued to run 2 MBA's in Imvepi settlement serving pregnant and lactating mothers with optimal breast feeding promotion messages. In the week 126 pregnant and lactating women and 38 community members were reached with nutrition and IYCF-E messages in week 10 compared to 446 in week in week 09.

**Distribution of hygiene (IMAM) kits:**

- Action Against Hunger (ACF) continued to distribute hygiene kits for IMAM beneficiaries comprising of Containers for water collection and storage, chlorine tablets and bathing soap.

**District nutrition coordination meeting**

- All nutrition partners within Arua district held a district nutrition coordination meeting to address challenges like support to nutrition addendum HMIS 009 and HMIS 008 reporting in facilities. Mass quarterly nutrition screening reports and FSN 2017 findings were analysed and actions plans developed.

**Identified Needs and Remaining Gaps**

- Although within UNHCR standards of less than 15%, defaulter rates in Imvepi settlement are substantial. Weekly follow up of client's lost-to-follow up beneficiaries by nutrition staff and routine community level follow up by village health teams was maintained.