

Imvepi Refugee Settlement

Health and Nutrition updates-Week 07 (8th to 14th February 2018)

Health & Nutrition

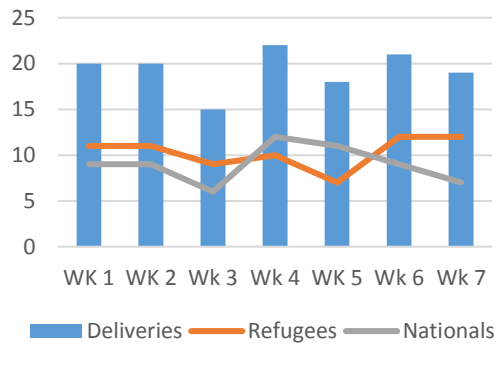
Health

Partners and Agencies: UNHCR, UNFPA, UNICEF, ADLG/DHO, Medical Teams International, Save the Children International (SCI), Medi Sans Frontiers France (MSF-F), Global Refuge International (GRI), CARE Uganda International, CUAMM Doctors with Africa, Uganda Red Cross Society (URCS), The Transcultural Organization (TPO), Infectious Disease Institute (IDI)

Total OPD/ IPD Consultations	<ul style="list-style-type: none"> ▪ OPD Consultations: 2,599 (2,188 refugees and 411 nationals) new OPD consultations were made in week 07 compared to 2,292 in week 06. Of which 2,188 (84%) were to refugees and 411 (16%) to nationals. ▪ Mental Health and Psychosocial Support Services (MHPSS): 22 (19 refugees and 02 nationals) new clients and 00 revisit clients received MHPSS in week 07 compared to 21 in week 06. The major psychiatric cases being post-traumatic stress disorder and depression. ▪ IPD admissions: 81 (50 refugees and 31 nationals) new In-patients admissions were made in week 07 compared to 55 in week 06. ▪ New referrals: 15 (12 refugees and 03 national) new referrals were made in week 07 to Arua Regional Referral Hospital compared to 11 in week 06. While 03 new referral was made to health facilities within the settlements and managed within. 														
Morbidity	Proportional Morbidity: <ul style="list-style-type: none"> • 345 (13%) confirmed malaria cases • 809 (31%) Acute RTI • 183 (7%) Watery Diarrhoea • 08 bloody diarrhoea cases. 					Vaccination ; Deworming ; Vitamin A			Vaccination, deworming & vitamin A supplementation for new arrivals in Imvepi RC: <ul style="list-style-type: none"> • 363 new arrival children <5 year were vaccinated in week 07 compared to 668 in week 06. (262 against measles, 101 against Polio, 13 mothers against T.T, 82 received Vitamin A Supplementation and 482 dewormed) Expanded programme on Immunization: <ul style="list-style-type: none"> • 561 individuals were vaccinated in week 07 compared to 323 in week 06. • 263 received vitamin A supplementation in week 07 compared to 109 in week 06. • 138 mothers received TT in week 07 compared to 66 in week 06. 						
Disease	AFP	Animal bites	Cholera	Bloody diarrhoea	Water y diarrhoea	G u i n e a W o r m	Malar ia	M e a s l e s	M E N I N G I T I S	Yello w Fever	N N T	V H F & R V F	T y p h o i d	M D R T B	Human Influenza samples
cases	0	0	0	08	183	0	345	0	0	0	0	1	0	0	0
Deaths	0	0	0	0	0	0	0	0	0	0	0	0	0	0	0

Sampl es taken	0	0	0	0	0	0	0	0	0	0	1	0	0	0
Suspect cholera Cases Identified in the Day	0					Suspect cholera Cases Undergoing Treatment	0							
Suspect meningitis Cases Identified in the day	0					Suspected meningitis Cases Undergoing Treatment	0							
Suspect measles Cases Identified in the day	0					Suspected measles Cases Undergoing Treatment	0							
Suspected VHF/RVF identified in the week	01					Suspected VHF/RVF on treatment in the week	01							
Mortality	<p>Deaths: 03 (03 refugees and 0 nationals) death was reported in week 07 compared to 01 in week 06. All 03 deaths were among individuals < 5 years and 00 among > 5 years and 00 from the community. There was no (00) maternal death and 03 death among neonates.</p> <p>Crude mortality rate (CMR): 0.03 deaths/10,000/day in week 07 compared to 0.01 deaths/10,000/day in week 06.</p> <p>Under Five Mortality (U5MR): 0.2 deaths/ 10,000/ day in week 07 compared to 0.0/10,000/ day in week 06.</p>					Health Workers per 10,000 Population	<p>Total # skilled staff 53 (Medical officer, clinical officers, Nurses, and midwives). This translates to 4.2/10,000 population. Given the current population of Imvepi 127,926 (25,501 children < 5 years) as at 25th January 2018.</p>							
Reproductive Health, HIV and AIDS and TB care	<ul style="list-style-type: none"> ▪ Total ANC: 242 (177 refugees and 65 nationals) pregnant women attended ANC in week 07 compared to 164 in week 06. ▪ First ANC visits: 122 (88 refugees and 34 nationals) pregnant mothers attended first ANC in week 07 compared to 84 in week 06. ▪ Fourth ANC Visits: 17 (10 refugees and 07 nationals) pregnant women attended 4th ANC sessions in week 07 compared to 19 in week 06. 													
	Labour and delivery care:					Elimination of mother to child HIV transmission (eMTCT):								
						<ul style="list-style-type: none"> ▪ 122 (88 refugees and 34 nationals) pregnant mothers who attended ANC1 were provided HIV testing services in week 07 and all found HIV negative compared to 84 in week 06. No (00) HIV positive delivery 								

Weekly deliveries by skilled health workers in Imvepi settlement



- **19** (12 refugees and 07 nationals) deliveries were conducted by skilled health workers in week 07 compared to 21 in week 06.

Post Natal Care: 53 (35 refugees and 18 nationals) lactating mothers attended PNC in week 07 compared to 58 in week 06.

Clinical Management of rape:

- 00 reported SGBV cases.

took place, therefore, we registered 100% coverage of eMTCT.

HIV and AIDS services:

- **01 (01 refugee and 00 national)** individual was newly tested HIV positive in week 07 as was compared to 04 in week 06.
- 763 (512 refugees and 251 nationals) individuals were offered HIV testing services in week 07 compared to 964 in week 06.
- 01 (01 refugee and 00 national) newly identified HIV positive refugee was initiated on HIV care and support.
- **3,245** pieces of condoms were distributed for HIV prevention in the community in week 07 compared to 4,642 in week 06.

TB treatment and care:

- 01 (01 refugees and 00 nationals) individual was newly diagnosed with active TB and started on treatment in week 07 compared to 02 in week 06.

▪ **Achievements and Impact**

OPD Consultations:

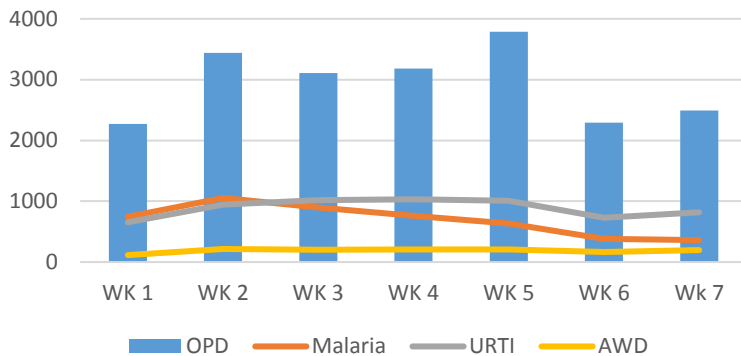
- 2,599 (2,188 refugees and 411 nationals) new OPD consultations were made in week 07 compared to 2,292 in week 06. Of which 84% of the new consultations were to refugees and 16% to nationals. The weekly proportional morbidity shows that the leading cause of morbidity in the week is Respiratory tract infections with 31%, malaria accounted for 13% and Watery Diarrhoea/WD remained at 7%.
- Therefore malaria, URTI and diarrhoeal diseases accounted for 52% in week 07 compared to 56% in week 06.
- The incidence of malaria, acute RTI and watery diarrhoea is estimated at 3 cases/1000 persons/week, 7 cases/ 1,000 persons and 2 cases/1000 persons /week respectively. During the week preventive measures through 85 active VHT's including mobile clinics and outreaches for treatment of malaria and other conditions were conducted.

▪ **Mortality and Morbidity:**

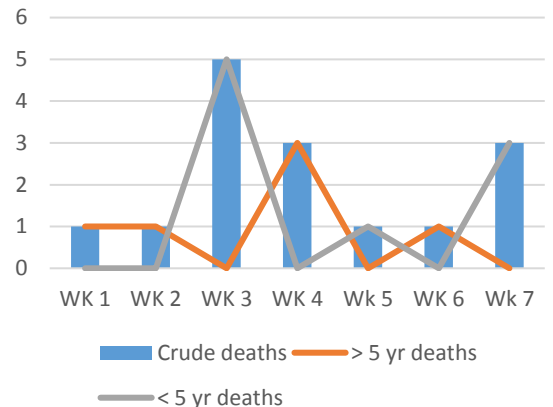
Weekly OPD Consultations and Morbidity trends in Imvepi settlement

Weekly Mortality trends in Imvepi settlement

Weekly OPD Consultations and Morbidity in Rhino Camp settlement



Weekly Mortalities in Imvepi settlement



- 03 (03 refugees and 00 nationals) death was reported from Imvepi settlement in week 07 compared to 01 in week 06. All 03 deaths were of individuals <5 years and 00 among > 5 years. 03 death was reported from health centers and 00 from the community. However, all were 03 neonatal deaths/< 28 days old deaths, and 00 maternal deaths. Therefore, Crude Mortality Rate (CMR) was 0.03 deaths/10,000/day and under-5 year mortality ratio (U5MR) was at 0.2 deaths/10,000/day below the emergency threshold of 1 and 2 deaths/10,000/day respectively. The cause/ probable causes of mortality being 02 premature delivery and 01 foetal distress during delivery.

Community based Control of Disease Outbreaks:

- 00 suspected measles cases were reported from Imvepi settlement in week 07 from week 05.
- 01 suspected rift valley fever/ viral haemorrhagic fever cases was detected in Imvepi settlement in week 07 compared to 02 in week 06. One (01) sample referred to the central public health laboratory.
- During the week alert for VHF's and other priority diseases was maintained through training of 15 health workers and 110 village health teams.
- Surveillance is maintained through 140 trained village health teams (VHT's) spread out in the settlement and weekly analysis of Health Information system reporting continued in the week(see priority diseases surveillance).

Medical screening of new arrivals:

- 277 new arrivals were medically screened at the Kuluba in week 07 compared to 514 in week 06.
- 940 individuals in Imvepi reception clinic were medically screened in week 07 compared to 230 in week 06.

TB screening at Imvepi reception:

- Routinely all coughing new arrivals are taken sputum samples for geneXpert through hub laboratory in Arua regional referral hospital and Yumbe hospital.

Other updates and activities of the week:

- Health messages for new arrivals regarding morbidity, healthcare in the settlements passed to new arrivals while in transit to the settlements.
- MSF-F continued to conduct surveillance, mental health and SGBV support services in Imvepi settlement in week 07.
- Global Refuge International (GRI) continued to conduct routine OPD services at point I zone 2 and supported 417 individuals in week 06 compared to 423 in week 06.
- All sector district health and nutrition coordination meeting was held in week 07.

Mental Health and Psychosocial support services:

- TPO supported 12 individuals with mental health and psychosocial support services in week 07 compared to 08 in week 06.

Identified Needs and Remaining Gaps:

- No major challenges registered in week 07.

Nutrition

Partners and Agencies: World Food Programme (WFP), UNHCR, UNICEF, ADLG/DHO, Medical teams international, CUAMM Doctors with Africa, Action Against Hunger (ACF), Medi Sans Frontiers France (MSF-F), Global Refuge International (GRI), and Save the Children international (SCI).

<p>Imvepi Reception Center Weekly Proxy Global Acute Malnutrition among children 6-59 months, MUAC (< 125 mm and/or oedema Imvepi reception centre screened 77 new arrivals and (02 MAM and 00 SAM) 38 pregnant and lactating mothers (04 < 23 cm and 34 > 23 cm)</p>	2.6%	<p>Community: overall weekly Proxy Global Acute Malnutrition among children 6-59 months, MUAC (< 125mm and/or oedema) Overall settlement 3,596 (2,896 refugees and 706 nationals) screened of which (77 MAM and 03 SAM)</p>	2.2%
---	-------------	---	-------------

Food Assistance

General Food Distribution Imvepi (kilocalories/person/day)	N/A	New arrivals ration (kilocal /person/day)	N/A
---	-----	---	-----

Narrative

Achievements and Impact

- 77 children less than 5 years and 38 pregnant and lactating women (PLW) in week 07 compared to 62 < 5 years and 27 PLW were screened for their nutritional status respectively at Imvepi reception center in week 06. 02 moderately malnourished (MAM) and 01 severely malnourished (SAM) and 04 mother pregnant and lactating had MUAC < 23 cm (malnourished).
- Similarly, in the entire Imvepi settlement, 3,596 children under 5's nutritional status was assessed in week 07 compared to 1,525 in week 06. There were 77 MAM and 03 SAM cases identified. Overall weekly proxy Global acute malnutrition among children 6-59 months screened in Imvepi settlement in week 07 was 2.2% compared to 0.6% in week 06.
- 77 and 03 new malnourished children were enrolled in SFP and OTP in week 07 compared to 12 and 02 in week 06 respectively. All the identified malnourished were initiated on therapeutic feeds and have been linked to Omugo extension settlement.
- In week 07, thirty two 32 (28 refugees and 04 nationals) were exited from targeted SFP and 29 (24 refugees and 05 nationals) were cured and 03 (03 refugees and 00 nationals) defaulters registered. Therefore recovery rates was 29 (91%) and 3(9.4%) defaulter rates among refugees and 0(0%) among nationals, 0(0%) death rate and 0(0%) non-response rate.
- Similarly, 03 (03 refugees and 00 nationals) individuals were exited from the OTP and all 02 refugees cured and 00 national cured. Recovery rates of 3(67%), defaulter rates of 1(33%) and 0(0%) non-response rate.

Community nutrition activities

Maternal Child Health Nutrition:

- MTI continued to conduct maternal child health nutrition for pregnant and lactating mothers and children 6-23 months in the settlement.

Infant and Young Child in Emergency activities:

- **IYCF through mother baby areas:** During the week SCI continued to run 2 MBA's in Imvepi settlement serving pregnant and lactating mothers with optimal breast feeding promotion messages. In week 07, 787 (787 refugees and 00 nationals) were being served in MBA's in the settlement. SCI reached 354 individuals with nutrition and IYCF-E messages in week 07 compared to 678 individuals in week 06.

Distribution of hygiene (IMAM) kits:

- Action Against Hunger (ACF) continued to distribute hygiene kits for IMAM beneficiaries comprising of Containers for water collection and storage, chlorine tablets and bathing soap.

Nutrition mission:

- There was a nutrition mission by WFP and USAID mission in Imvepi settlement during which routine integrated nutrition and immunization activities were visited.

Identified Needs and Remaining Gaps

- High defaulter rates in OTP of above 15% of the minimum standard. Follow up through village health workers will be strengthened to bring defaulters back.