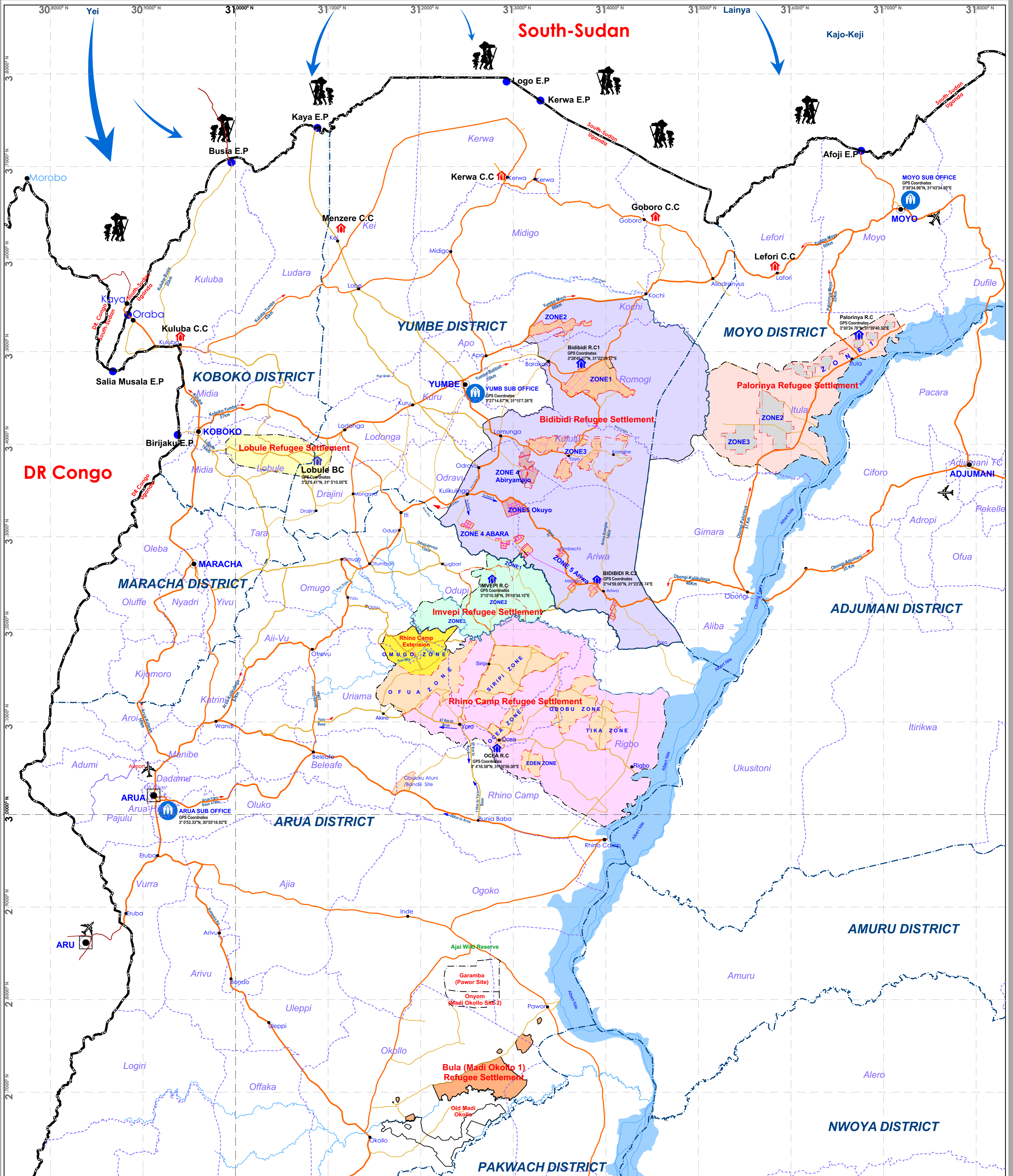
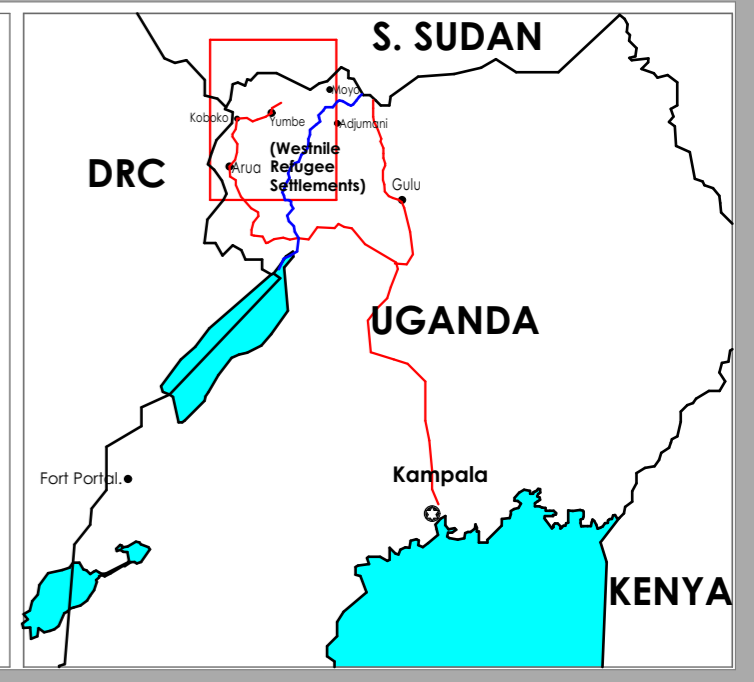


Access Roads to Bidibidi, Imvepi, Lobule, Palorinya and Rhino Camp Refugee Settlements

DRAFT VIII as of 8th of February 2018

The boundaries and names shown and the designation used on this map do not imply official endorsement or acceptance by United Nations



Map Legend

- | | | | | | |
|---------------------|-----------------------------|------------------|------------------------------|----------------------------------|-------------------|
| National Boundary | Zonal/Village Boundary | Municipal Town | Bidibidi Refugee Settlement | Rhino Camp Refugee Settlement | Collection Centre |
| District Boundary | UNRA Roads National Rd. | District Town | Imvepi Refugee Settlement | Proposed Bula Refugee Settlement | Entry Point |
| Subcounty Boundary | District Roads | Trading Centre | Lobule Refugee Settlement | Reception Centre | River Nile |
| Settlement Boundary | Internal Zonal Access Roads | UNHCR Sub-Office | Palorinya Refugee Settlement | Base Camp | Airports |

Datum: WGS84
 Grid: UTM Zone 36N
 Projection: Transverse Mercator Central
 Meridian: 33 00000 East of Greenwich
 Latitude of Origin: Equator
 Linear Unit: Meter

SCALE
 0 5 10 20
 Kilometers