

UNHCR in partnership with Nigeria Immigration Service (NIS) carries out registration at the border control points in the North East where Nigerian refugees are returning from Cameroon, Niger and Chad. 94% of the refugee returnees report to have been unregistered in the country of asylum and 9% of the refugee returnee households report that they did not return voluntarily back to Nigeria. UNHCR Nigeria is working closely with partners to implement a comprehensive response strategy, including providing targeted assistance to returning Nigerians, developing the capacity of key stakeholders to the response and advocating for conditions of returns to comply with International legal norms. Since registration of refugee returnees commenced in August 2015 through December 2017, NIS together with UNHCR registered 442,556 refugee returnees.

282,761 Individual

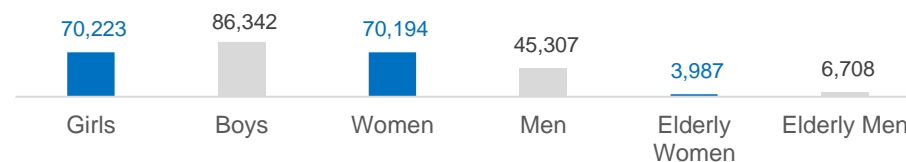
refugee returnees registered by National Immigration Service

71,635 Households (HH)

94%
Of the returnees were unregistered in country of asylum

9%
Of the individuals did not return voluntarily back to Nigeria

AGE BREAKDOWN



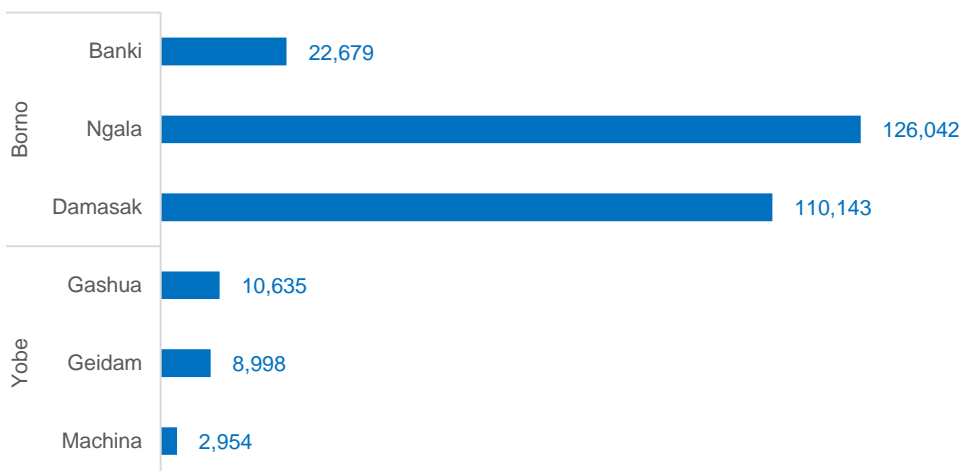
89%
Of the households have destroyed or damaged properties in Nigeria

99%
Of the households have members with specific needs

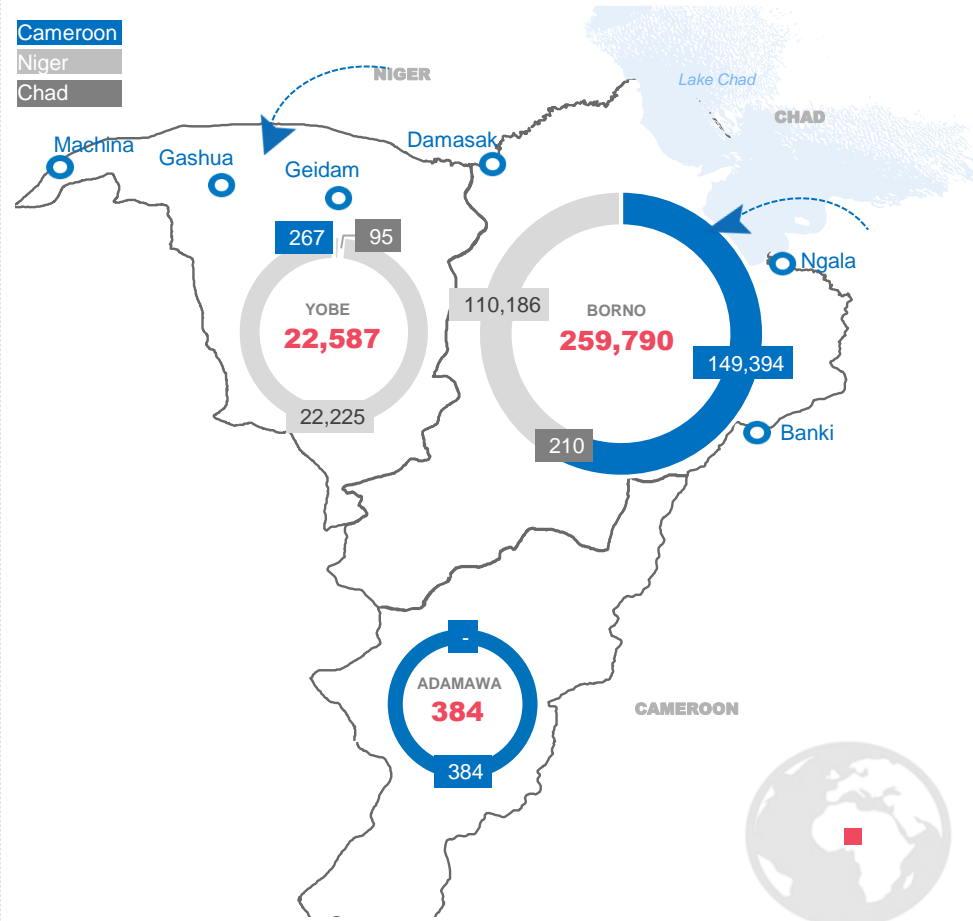
LEGAL STATUS IN COUNTRY OF ASYLUM

	Children	Adults	Elderly	Total
Cameroon	82,356	61,400	6,289	150,045
Registered Refugee	9,851	5,967	743	16,561
Unregistered	72,505	55,433	5,546	133,484
Chad	169	130	6	305
Unregistered	169	130	6	305
Niger	74,040	53,971	4,400	132,411
Registered Refugee	338	217	12	567
Unregistered	73,702	53,754	4,388	131,844
Grand Total	156,565	115,501	10,695	282,761

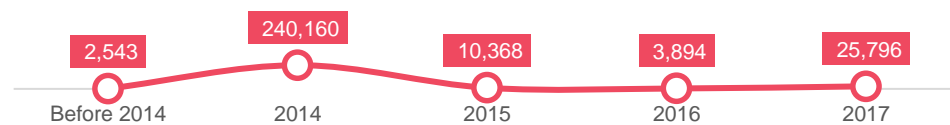
REGISTRATION CONTROL POINTS



OVERVIEW BY STATE OF REGISTRATION

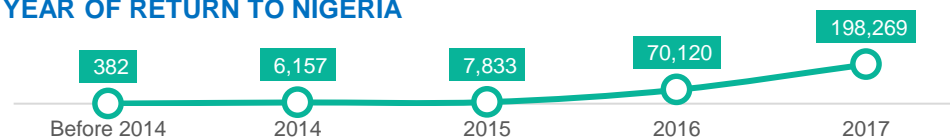


FLIGHT TO COUNTRY OF ASYLUM



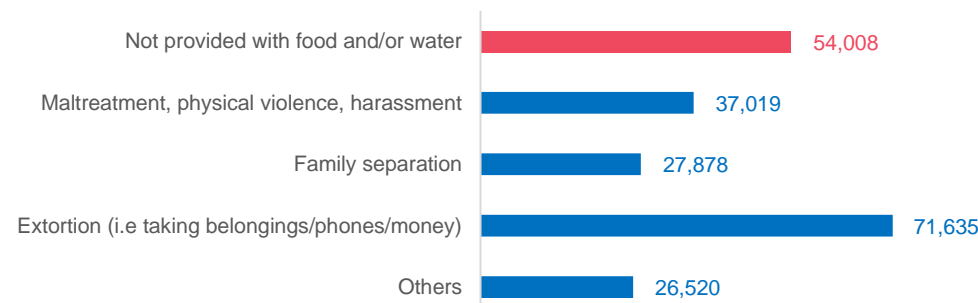
The vast majority of refugee returnees (85%) report to have fled to countries of asylum in 2014 at the peak of Boko Haram violence.

YEAR OF RETURN TO NIGERIA

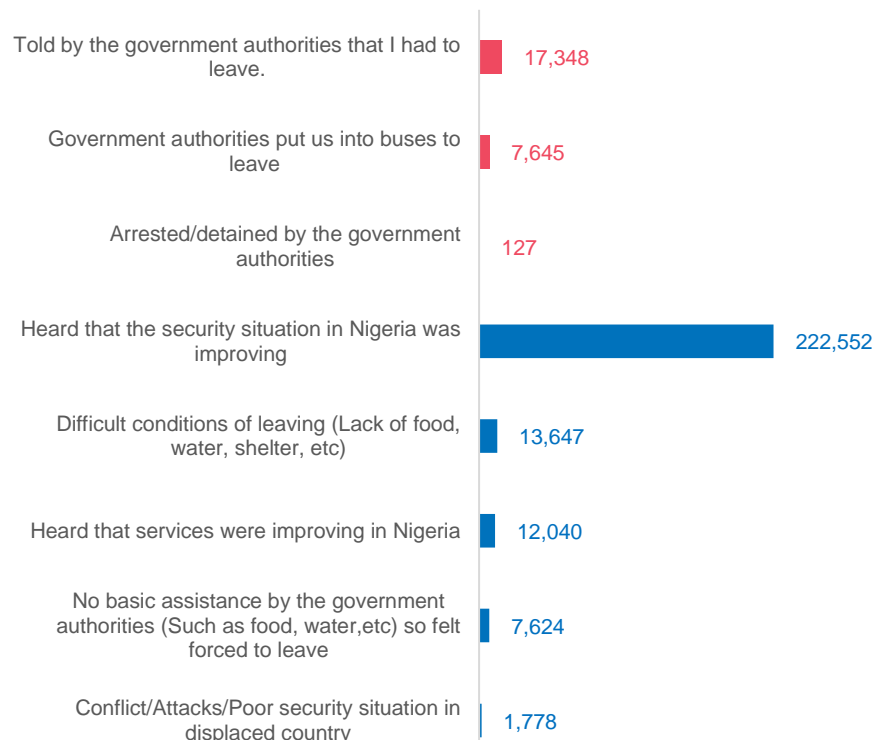


Registration points in Banki and Damasak were not able to be established until the security situation recently improved and such locations could be accessed. Therefore, 84,492 out of 282,761 refugee returnees had already arrived in previous years and were documented in 2017 once systems were able to be established.

CONDITIONS DURING RETURN (HOUSEHOLDS)



REASON FOR LEAVING COUNTRY OF ASYLUM



DISCLAIMER: Nigerian refugees are recognized on a prima facie or blanket temporary protection basis, technically applicable to all persons originating from Borno, Yobe and Adamawa states. The figures may include a very small number of persons who are not refugees as well as some persons engaged in back and forth movements and who may have been registered multiple times as refugee returnees.

For more information, contact: nigabim@unhcr.org, nyaki@unhcr.org

Supported by:

