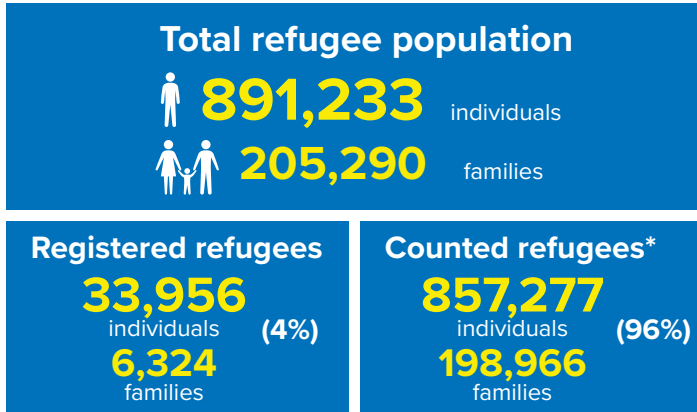
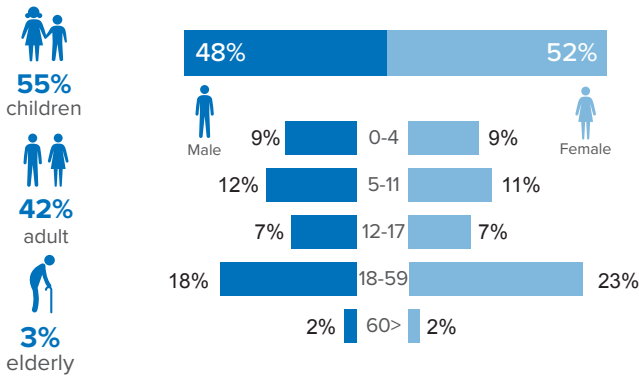


Refugee population figure

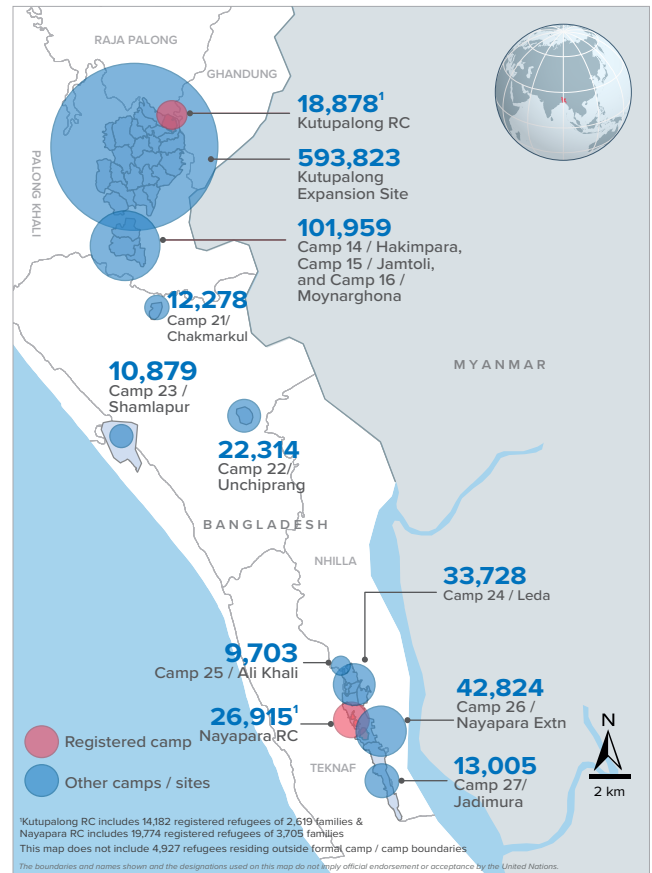


* Some refugees living in host communities and in certain locations beyond the camp boundaries may not have been counted.

Demography

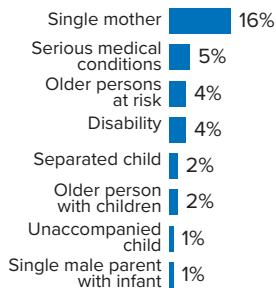


Refugee population density



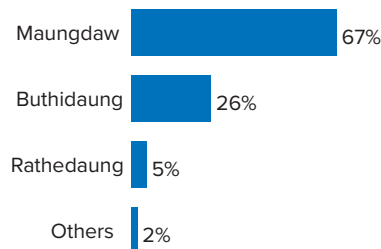
Specific needs

31% of the families have been identified with at least one protection vulnerability*



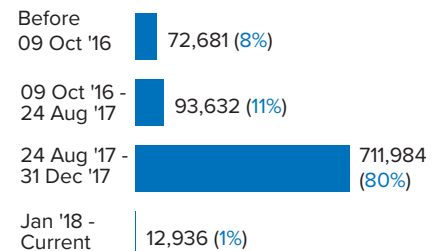
Place of origin

67% of the Rohingya refugees comes from Maungdaw Township



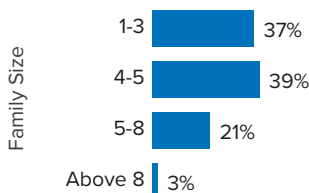
Period of arrival

80% of current population arrived between Aug. and Dec 2017



Family size breakdown

39% of the families have a standard family size of 4-5 persons



Linking exercise

The Linking Exercise, conducted from December 2017 until February 2018, was a collaborative effort between the Government of Bangladesh and the United Nations High Commissioner for Refugees that aimed to merge the family based Rohingya population data collected through the Family Counting Exercise with attributes of the individual Rohingya population data collected by the Ministry of Home Affairs.

The exercise was conducted with a view to creating a unified dataset with individual data grouped into families which will be used to better protect and assist families.

*Figures are the percentage of total families with at least one person with a specific need. More than one specific need may be present within one family.

Age and gender breakdown by camp/site

Camp	Infant female below 1	Infant male below 1	1-4 Children female	1-4 Children male	5-11 Children female	5-11 Children male	12-17 Children female	12-17 Children male	18-59 Adult female	18-59 Adult male	60+ Elderly female	60+ Elderly male	Total Families	Total Individuals
Camp 15	946	893	3,537	3,677	5,282	5,475	3,411	3,596	11,498	9,170	901	905	11,143	49,291
Camp 26	720	647	3,255	3,264	4,928	5,443	3,107	2,915	10,227	7,075	662	581	9,774	42,824
Camp 13	702	749	3,019	3,114	4,419	4,680	2,715	2,787	9,543	7,576	734	673	9,544	40,711
Camp 1W	759	757	2,921	2,939	4,401	4,464	2,679	2,767	9,582	7,700	855	747	9,361	40,571
Camp 1E	657	730	2,775	2,931	4,216	4,435	2,621	2,747	9,230	7,694	787	688	9,093	39,511
Camp 3	683	728	3,014	3,082	4,175	4,399	2,501	2,679	9,303	7,280	686	581	9,083	39,111
Camp 7	695	708	2,941	3,058	4,162	4,363	2,588	2,547	8,981	7,063	707	638	9,140	38,451
Camp 9	616	557	2,746	2,756	3,935	4,002	2,466	2,484	8,434	6,854	705	687	8,549	36,242
Camp 24	513	524	2,290	2,504	4,046	4,169	2,325	2,414	8,042	5,933	547	421	7,803	33,728
Camp 8W	549	535	2,635	2,578	3,470	3,655	2,045	2,155	7,677	6,123	611	544	7,496	32,577
Camp 10	629	608	2,548	2,656	3,347	3,700	2,117	2,069	7,635	6,002	592	520	7,509	32,423
Camp 8E	508	504	2,284	2,391	3,431	3,496	2,341	2,277	7,479	5,995	551	562	7,336	31,819
Camp 11	553	583	2,366	2,395	3,381	3,586	2,151	2,205	7,288	5,966	542	501	7,152	31,517
Camp 14	544	575	2,229	2,470	3,296	3,643	2,220	2,206	7,098	5,706	585	518	6,841	31,090
Camp 4	558	592	2,279	2,435	3,401	3,545	1,957	1,953	7,188	5,618	485	383	7,472	30,394
Camp 2E	537	504	2,196	2,253	3,192	3,464	1,747	1,801	6,951	5,199	508	437	6,923	28,789
Camp 18	475	505	2,240	2,289	2,928	3,030	1,823	1,715	6,505	5,086	360	374	6,679	27,330
Nayapara RC*	87	91	1,580	1,642	2,931	3,037	2,227	2,280	7,169	4,997	457	417	5,734	26,915
Camp 5	444	476	1,974	2,049	2,750	2,819	1,533	1,617	5,958	4,633	453	412	6,037	25,118
Camp 2W	410	410	1,842	1,967	2,842	3,088	1,562	1,568	5,882	4,659	490	373	5,733	25,093
Camp 6	514	447	2,006	2,117	2,685	2,861	1,448	1,535	5,732	4,524	427	385	5,749	24,681
Camp 22	411	384	1,605	1,799	2,560	2,628	1,690	1,682	4,860	3,983	378	334	4,600	22,314
Camp 12	369	353	1,596	1,691	2,355	2,622	1,563	1,528	5,066	3,959	403	353	4,838	21,858
Camp 16	433	396	1,587	1,669	2,326	2,537	1,522	1,438	4,964	4,001	383	322	4,826	21,578
Camp 19	331	318	1,552	1,624	2,177	2,413	1,386	1,431	4,696	3,660	338	282	4,651	20,208
Kutupalong RC*	92	79	1,101	1,261	2,006	2,150	1,510	1,445	4,818	3,839	296	281	3,779	18,878
Camp 17	223	260	1,246	1,242	1,635	1,715	926	920	3,485	2,663	218	215	3,477	14,748
Camp 27	222	194	1,006	1,072	1,545	1,542	925	958	3,010	2,165	198	168	2,891	13,005
Camp 21	228	213	909	965	1,346	1,410	760	800	2,962	2,367	184	134	3,010	12,278
Camp 23	182	200	796	824	1,445	1,472	629	648	2,667	1,687	170	159	2,641	10,879
Camp 25	141	160	725	716	1,133	1,217	760	700	2,254	1,611	172	114	2,185	9,703
Camp 20	121	131	526	602	752	803	386	425	1,693	1,247	117	94	1,664	6,897
Camp 20 Extension	58	53	274	271	366	393	205	210	802	633	48	38	817	3,351
Camp 4 Extension	48	48	168	204	262	286	137	147	599	455	36	33	602	2,423
No camp**	84	80	387	418	539	580	308	329	1,146	892	94	70	1,158	4,927
Total	15,042	14,992	66,155	68,925	97,665	103,122	60,291	60,978	210,424	164,015	15,680	13,944	205,290	891,233

*Kutupalong RC includes 14,182 registered refugees of 2,619 families & Nayapara RC includes 19,774 registered refugees of 3,705 families

**This represents refugees residing outside formal camp boundaries

Population figures by period of arrival

Arrival Period	Before 09 Oct 2016		09 Oct 2016 - 24 Aug 2017		25 Aug 2017 - 31 Dec 2017		01 Jan 2018 - Current date		Total Families	Total Individuals
Camp	Total Families	Total Individuals	Total Families	Total Individuals	Total Families	Total Individuals	Total Families	Total Individuals		
Camp 15	11	47	767	3,399	10,364	45,837	1	8	11,143	49,291
Camp 26	72	352	851	3,797	8,394	36,696	457	1,979	9,774	42,824
Camp 13	11	42	788	3,445	8,736	37,190	9	34	9,544	40,711
Camp 1W	20	79	1,040	4,457	8,280	35,965	21	70	9,361	40,571
Camp 7	120	527	1,058	4,581	7,912	33,135	50	208	9,140	38,451
Camp 1E	34	163	1,606	6,899	7,430	32,365	23	84	9,093	39,511
Camp 3	17	80	948	4,171	8,094	34,761	24	99	9,083	39,111
Camp 9	89	349	2,117	8,614	6,341	27,271	2	8	8,549	36,242
Camp 24	2,181	10,561	527	2,224	5,079	20,891	16	52	7,803	33,728
Camp 10	8	39	598	2,551	6,896	29,808	7	25	7,509	32,423
Camp 8W	23	106	655	2,854	6,757	29,390	61	227	7,496	32,577
Camp 4	17	81	289	1,193	6,947	28,196	219	924	7,472	30,394
Camp 8E	35	147	855	3,742	6,427	27,853	19	77	7,336	31,819
Camp 11	1	3	1,096	4,863	6,053	26,647	2	4	7,152	31,517
Camp 2E	3,230	13,652	1,676	7,085	1,989	7,962	28	90	6,923	28,789
Camp 14	7	25	592	2,745	6,236	28,291	6	29	6,841	31,090
Camp 18	12	48	166	686	6,475	26,500	26	96	6,679	27,330
Camp 5	23	90	534	2,270	5,463	22,697	17	61	6,037	25,118
Camp 6	57	257	1,075	4,844	4,602	19,529	15	51	5,749	24,681
Nayapara RC*	3,752	19,963	252	977	1,694	5,869	36	106	5,734	26,915
Camp 2W	1,833	8,409	1,396	6,071	2,462	10,468	42	145	5,733	25,093
Camp 12	3	15	236	1,074	4,595	20,749	4	20	4,838	21,858
Camp 16	5	25	281	1,243	4,540	20,310	-	-	4,826	21,578
Camp 19	1	4	387	1,757	4,184	18,103	79	344	4,651	20,208
Camp 22	5	34	206	1,001	4,381	21,253	8	26	4,600	22,314
Kutupalong RC*	2,928	15,504	197	775	638	2,550	16	49	3,779	18,878
Camp 17	27	123	145	591	2,197	9,188	1,108	4,846	3,477	14,748
Camp 21	12	53	144	626	2,731	11,150	123	449	3,010	12,278
Camp 27	29	142	259	1,213	2,470	11,041	133	609	2,891	13,005
Camp 23	254	1,171	284	1,210	2,100	8,486	3	12	2,641	10,879
Camp 25	18	90	254	1,133	1,909	8,461	4	19	2,185	9,703
Camp 20	56	252	104	459	1,189	4,904	315	1,282	1,664	6,897
Camp 20 Extension	14	57	58	252	582	2,378	163	664	817	3,351
Camp 4 Extension	6	25	44	196	548	2,185	4	17	602	2,423
No camp**	37	166	149	634	919	3,905	53	222	1,158	4,927
Grand Total	14,948	72,681	21,634	93,632	165,614	711,984	3,094	12,936	205,290	891,233

*Kutupalong RC includes 14,182 registered refugees of 2,619 families & Nayapara RC includes 19,774 registered refugees of 3,705 families

**This represents refugees residing outside formal camp boundaries

Creation date: 15 August 2018 Sources: UNHCR Feedback: bgdcoim@unhcr.org

Population figures by specific needs

Camp	Families with separated children	Families with unaccompanied children	Families with a person with disability	Families with older person at risk	Families with older person at risk with children	Families with people with serious medical condition	Single male parents with infants	Single female parent	Families with people with specific needs
Camp 26	178	55	290	372	115	230	81	2,251	3,344
Camp 15	237	60	353	589	197	463	63	1,611	3,201
Camp 1E	168	41	551	452	318	485	56	1,136	2,883
Nayapara RC	178	41	608	168	51	1,203	35	1,198	2,837
Camp 7	221	29	356	362	244	456	106	1,262	2,761
Camp 13	248	79	311	394	208	344	65	1,426	2,757
Camp 1W	164	32	396	447	216	449	65	1,267	2,755
Camp 3	198	62	375	355	292	328	66	1,412	2,651
Camp 24	177	74	301	289	121	258	43	1,643	2,644
Camp 9	150	74	383	396	263	488	97	1,053	2,512
Camp 4	239	87	180	291	197	269	100	1,430	2,451
Camp 10	126	79	388	340	244	514	95	1,038	2,416
Camp 8E	154	70	346	372	243	418	85	1,077	2,356
Camp 2E	158	52	256	247	200	312	50	1,187	2,170
Camp 18	155	62	244	227	169	304	83	1,167	2,132
Camp 11	170	62	273	299	161	238	67	1,088	1,984
Camp 5	161	70	209	288	166	210	62	1,095	1,956
Camp 14	118	46	184	314	137	304	42	965	1,845
Camp 6	166	44	223	242	125	318	39	822	1,820
Camp 2W	106	18	283	240	112	265	62	801	1,695
Camp 8W	90	37	245	268	156	288	80	738	1,676
Kutupalong RC	60	15	351	106	39	768	10	584	1,599
Camp 19	121	32	187	215	80	116	44	742	1,379
Camp 12	80	34	143	199	103	138	32	768	1,334
Camp 16	92	22	171	201	81	162	37	711	1,322
Camp 22	70	17	159	157	78	154	16	581	1,118
Camp 17	100	19	126	137	72	106	36	629	1,089
Camp 23	50	12	75	95	43	69	11	742	1,009
Camp 27	49	13	93	76	33	49	21	680	945
Camp 21	66	23	110	96	32	108	35	515	901
Camp 25	38	23	75	84	36	87	18	501	766
Camp 20	24	12	88	66	46	72	16	286	532
Camp 20 Extension	21	14	32	34	22	33	8	129	250
Camp 4 Extension	14	8	26	19	17	28	7	99	190
No camp	27	10	49	59	16	33	12	216	378
Total	4,374	1,428	8,440	8,496	4,633	10,067	1,745	32,850	63,658