



Camp Opened: 16 November 1996

CAMP OVERVIEW	
Coordinates :	Lat 4°12'44.951"S Lon 30°23'22.191"E
Camp Extent :	1,199.8 Hectares
Av. Camp Area/Person	90 m ²
Distance from border :	37 km
Region/District :	Kigoma / Kasulu
# of Partners :	18
Admin divisions :	12 Zones, 142 Villages
Authority :	Ministry of Home Affairs (MHA) - Government of Tanzania

CURRENT SERVICES

The following Services are available in the camp:

1 hospital, 2 health centers, 5 health posts, 13 primary schools and 4 secondary schools (for Congolese population), 8 primary schools and 2 secondary schools (for Burundian population) 3 youth centers (2 for Congolese population and 1 for Burundian population), 2 women centers, 1 multi purpose vocational training center, 1 distribution center, 2 police posts; 1 common market, 2 community based rehabilitation centers, 148 solar streets lights.

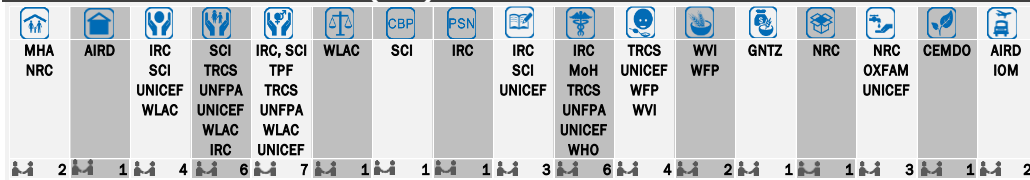
COMMUNITY ORGANIZATION

The camp community organization is structured around three administrative layers, which are Zones, Villages and Clusters. Each organizational level has its representatives with currently 631 clusters leaders, 142 village leaders and 12 zonal leaders.

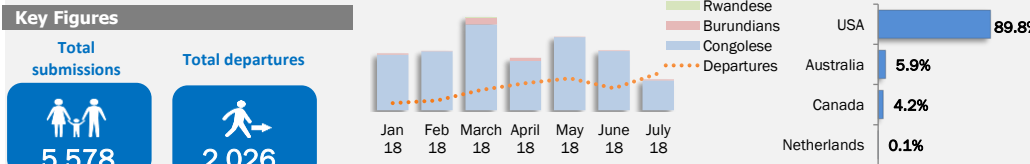
SECTORS OVERVIEW

Sector	Indicator	Minimum Standard	Target	Achieved	Actors
Protection	% of identified SGBV survivors assisted with appropriate support	95%	100%	100%	IRC, SCI, WLAC, UNICEF
	% of children with specific needs who received individual case management	95%	100%	100%	
Shelter	% of households living in adequate dwellings (Transitional Shelters)	40%	100%	89%	AIRD
	% of households provided with emergency shelters	100%	100%	100%	
WASH	Litres of drinking water received per person per day	20Ltrs	20Ltrs	23.6Ltrs	OXFAM, NRC, UNICEF
	% of households with family latrines	-	40%	67%	
Food	% of refugees benefiting food assistance (2100 kcal/person/day)	75%	100%	88%	WFP, WVI
Health	% of refugee women delivering with assistance by qualified personnel	95%	95%	98%	IRC, MoH, TRCS, UNFPA, UNICEF, WHO
	SENS Prevalence rate (<%) of GAM global acute malnutrition (6 to 59 months)	<5%	<5%	4%	
Education	% primary school aged refugee children enrolled	-	96%	96%	IRC, SCI, UNICEF
	% secondary school aged refugee children enrolled	-	70%	58%	

WHO DOES WHAT WHERE (3W)



RESETTLEMENT



Population : 153,024

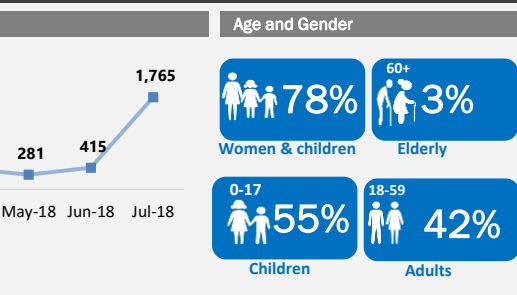
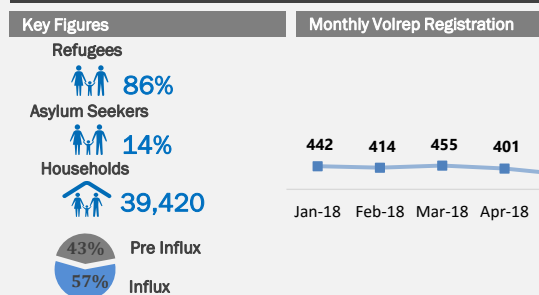
BACKGROUND

Nyarugusu refugee camp was opened in November 1996 to host Persons of Concern fleeing conflicts in DRC. Prior to April 2015, the camp hosted 65,000 Congolese and 2,400 Burundians. 84,961 Burundians arrived between April and October 2015 were being hosted in Nyarugusu refugee camp before relocation of close to 40,000 Burundian refugees to Nduta and Mtendeli refugee camps between October 2015 and February 2016 respectively. The camp is currently performing a resettlement process that is mainly targeting Congolese who arrived in Tanzania between 1994 and 2005.

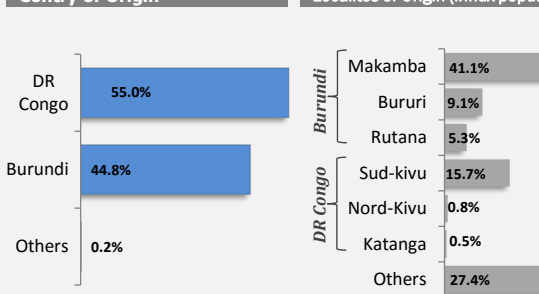
SITUATION



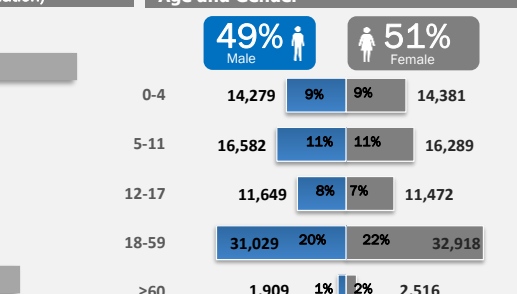
DEMOGRAPHY



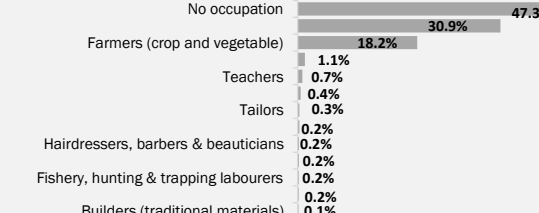
Contry of Origin



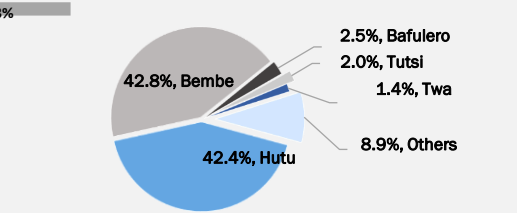
Localites of Origin (influx population)



Population Professional Backgrounds



Population Ethnicities



UNHCR gratefully acknowledges the support of the following partners in Nyarugusu Camp :

