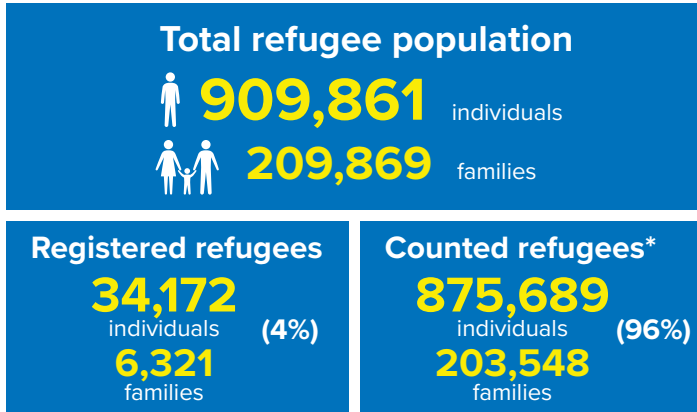
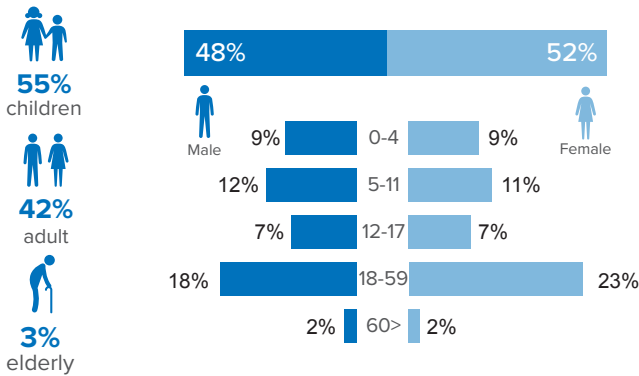


## Refugee population figure

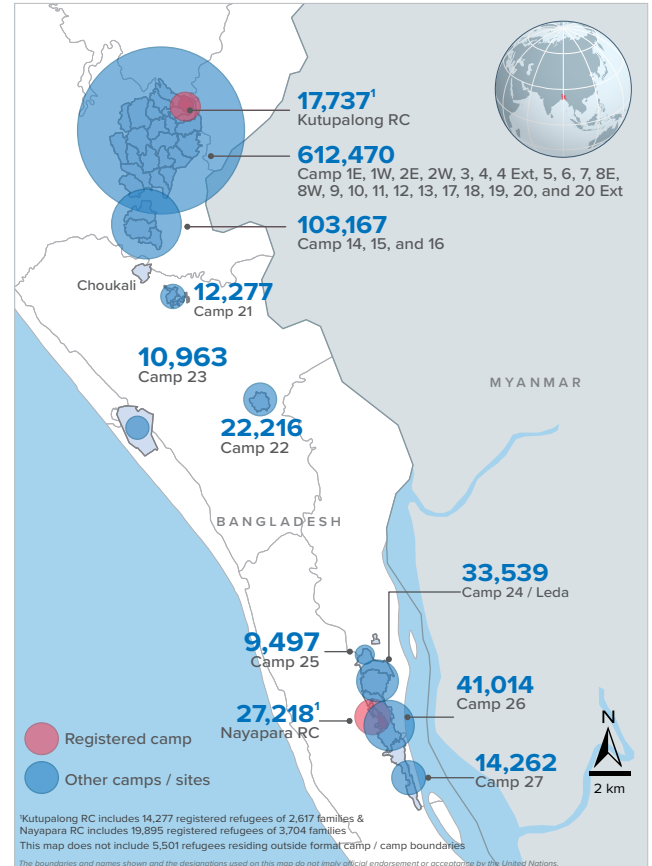


\* Some refugees living in host communities and in certain locations beyond the camp boundaries may not have been counted.

## Demography

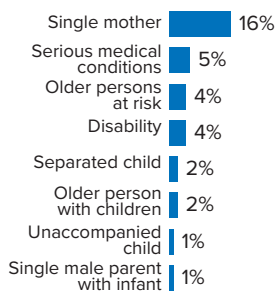


## Refugee population density



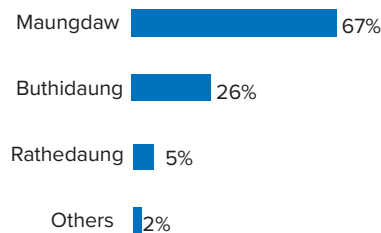
## Specific needs

**31%** of the families have been identified with at least one protection vulnerability\*



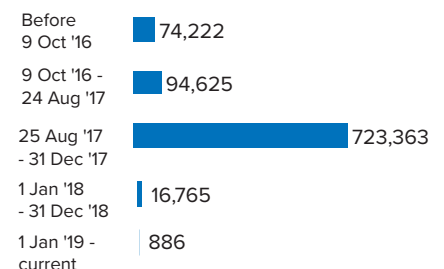
## Place of origin

**67%** of the Rohingya refugees comes from Maungdaw Township



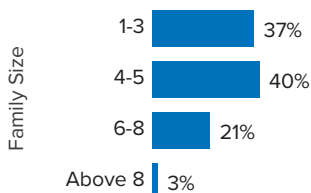
## Period of arrival

**81%** of current population arrived between Aug. 2017 to date



## Family size breakdown

**40%** of the families have a standard family size of 4-5 persons



## Linking exercise

The Linking Exercise, conducted from December 2017 until February 2018, was a collaborative effort between the Government of Bangladesh and the United Nations High Commissioner for Refugees that aimed to merge the family based Rohingya population data collected through the Family Counting Exercise with attributes of the individual Rohingya population data collected by the Ministry of Home Affairs.

The exercise was conducted with a view to creating a unified dataset with individual data grouped into families which will be used to better protect and assist families.

\*Figures are the percentage of total families with at least one person with a specific need. More than one specific need may be present within one family.

## Age and gender breakdown by camp/site

Camp	Infant female below 1	Infant male below 1	1-4 Children female	1-4 Children male	5-11 Children female	5-11 Children male	12-17 Children female	12-17 Children male	18-59 Adult female	18-59 Adult male	60+ Elderly female	60+ Elderly male	Total Families	Total Individuals
Camp 15	946	901	3,540	3,697	5,304	5,486	3,435	3,606	11,540	9,196	910	907	11,184	49,468
Camp 13	722	773	3,112	3,220	4,528	4,797	2,779	2,858	9,826	7,771	744	688	9,800	41,818
Camp 26	697	615	3,133	3,132	4,741	5,206	2,973	2,765	9,803	6,760	634	555	9,393	41,014
Camp 1W	763	758	2,956	2,974	4,438	4,535	2,687	2,790	9,694	7,787	866	753	9,470	41,001
Camp 1E	669	745	2,842	3,033	4,335	4,554	2,697	2,803	9,480	7,859	816	712	9,329	40,545
Camp 3	692	743	3,026	3,134	4,242	4,450	2,529	2,728	9,424	7,368	693	595	9,197	39,624
Camp 7	709	713	3,051	3,166	4,280	4,483	2,683	2,654	9,248	7,211	724	655	9,411	39,577
Camp 9	669	601	2,775	2,927	3,989	4,115	2,489	2,462	8,686	7,018	740	655	8,682	37,126
Camp 24	508	520	2,280	2,490	4,028	4,146	2,308	2,405	8,000	5,897	544	413	7,760	33,539
Camp 10	617	598	2,629	2,663	3,398	3,699	2,126	2,057	7,730	6,115	580	561	7,652	32,773
Camp 8W	525	532	2,602	2,491	3,492	3,658	2,150	2,216	7,617	6,092	602	527	7,465	32,504
Camp 4	583	638	2,470	2,605	3,601	3,739	2,067	2,063	7,672	6,006	519	403	7,948	32,366
Camp 14	560	587	2,311	2,559	3,395	3,742	2,260	2,244	7,297	5,826	605	525	7,049	31,911
Camp 11	548	579	2,364	2,389	3,379	3,583	2,136	2,192	7,254	5,930	532	495	7,127	31,381
Camp 8E	529	498	2,291	2,353	3,340	3,399	2,192	2,161	7,362	5,837	560	540	7,208	31,062
Camp 2E	559	532	2,325	2,363	3,333	3,597	1,823	1,866	7,286	5,467	519	448	7,292	30,118
Nayapara RC*	84	90	1,555	1,641	2,942	3,013	2,295	2,362	7,195	5,159	457	425	5,709	27,218
Camp 18	460	500	2,213	2,234	2,848	2,985	1,780	1,670	6,387	4,980	359	365	6,540	26,781
Camp 2W	431	433	1,930	2,028	2,921	3,163	1,628	1,614	6,128	4,807	497	396	5,965	25,976
Camp 5	433	468	1,953	2,030	2,792	2,828	1,538	1,618	5,956	4,633	465	416	6,047	25,130
Camp 6	527	463	2,011	2,147	2,719	2,922	1,468	1,555	5,798	4,592	439	390	5,826	25,031
Camp 12	404	387	1,757	1,870	2,543	2,810	1,704	1,630	5,510	4,281	440	378	5,276	23,714
Camp 22	410	380	1,592	1,799	2,558	2,615	1,675	1,668	4,842	3,963	378	336	4,587	22,216
Camp 16	432	405	1,605	1,701	2,353	2,570	1,522	1,436	5,022	4,030	385	327	4,880	21,788
Camp 19	335	325	1,593	1,676	2,244	2,495	1,423	1,464	4,843	3,769	350	286	4,826	20,803
Kutupalong RC*	80	60	1,012	1,149	1,903	2,037	1,475	1,435	4,552	3,540	255	239	3,548	17,737
Camp 17	265	304	1,418	1,443	1,887	1,972	1,029	1,043	4,029	3,089	228	245	4,020	16,952
Camp 27	238	217	1,092	1,147	1,674	1,710	1,028	1,062	3,307	2,383	219	185	3,150	14,262
Camp 21	224	215	908	958	1,347	1,412	760	797	2,970	2,367	182	137	3,017	12,277
Camp 23	181	199	808	845	1,451	1,491	632	650	2,687	1,690	170	159	2,661	10,963
Camp 25	140	158	710	701	1,105	1,189	742	685	2,209	1,578	168	112	2,143	9,497
Camp 20	131	129	596	640	829	868	413	468	1,803	1,350	121	98	1,794	7,446
Camp 4 Extension	105	111	481	522	676	697	350	348	1,475	1,169	92	86	1,495	6,112
Camp 20 Extension	83	80	374	416	498	534	273	265	1,108	888	58	53	1,119	4,630
No camp**	108	90	459	464	634	626	309	333	1,290	1,040	86	62	1,299	5,501
<b>Total</b>	<b>15,367</b>	<b>15,347</b>	<b>67,774</b>	<b>70,607</b>	<b>99,747</b>	<b>105,126</b>	<b>61,378</b>	<b>61,973</b>	<b>215,030</b>	<b>167,448</b>	<b>15,937</b>	<b>14,127</b>	<b>209,869</b>	<b>909,861</b>

\*Kutupalong RC includes 14,277 registered refugees of 2,617 families & Nayapara RC includes 19,895 registered refugees of 3,704 families

\*\*This represents refugees residing outside formal camp boundaries

## Population figures by period of arrival

Arrival Period	Before 09 Oct 2016		09 Oct 2016 - 24 Aug 2017		25 Aug 2017 - 31 Dec 2017		01 Jan 2018 - 31 Dec 2018		01 Feb 2019 - Current date		Total Families	Total Individuals
Camp	Total Families	Total Individuals	Total Families	Total Individuals	Total Families	Total Individuals	Total Families	Total Individuals	Total Families	Total Individuals		
Camp 15	12	50	765	3,390	10,392	45,967	13	51	2	10	11,184	49,468
Camp 13	15	60	784	3,434	8,918	37,977	76	308	7	39	9,800	41,818
Camp 26	85	412	827	3,675	8,045	35,038	436	1,889	-	-	9,393	41,014
Camp 1W	28	107	1,043	4,501	8,369	36,295	29	95	1	3	9,470	41,001
Camp 1E	52	236	1,646	7,095	7,592	33,071	34	122	5	21	9,329	40,545
Camp 3	21	99	943	4,164	8,194	35,199	31	130	8	32	9,197	39,624
Camp 7	108	468	1,109	4,791	8,093	33,939	93	350	8	29	9,411	39,577
Camp 9	77	317	1,680	6,873	6,883	29,791	36	123	6	22	8,682	37,126
Camp 24	2,158	10,459	523	2,210	5,063	20,818	16	52	-	-	7,760	33,539
Camp 10	24	96	804	3,342	6,802	29,250	21	81	1	4	7,652	32,773
Camp 8W	35	152	728	3,236	6,625	28,815	76	296	1	5	7,465	32,504
Camp 4	31	126	343	1,409	7,293	29,664	275	1,143	6	24	7,948	32,366
Camp 14	14	55	601	2,786	6,392	28,905	42	165	-	-	7,049	31,911
Camp 11	4	15	1,081	4,797	6,021	26,490	19	73	2	6	7,127	31,381
Camp 8E	43	171	871	3,745	6,264	27,029	29	113	1	4	7,208	31,062
Camp 2E	3,318	14,056	1,687	7,064	2,208	8,737	73	239	6	22	7,292	30,118
Nayapara RC*	3,757	20,374	248	972	1,668	5,766	36	106	-	-	5,709	27,218
Camp 18	16	59	195	809	6,279	25,715	37	135	13	63	6,540	26,781
Camp 2W	1,881	8,615	1,407	6,076	2,596	11,003	69	232	12	50	5,965	25,976
Camp 5	31	129	558	2,349	5,436	22,569	21	78	1	5	6,047	25,130
Camp 6	58	258	1,126	5,074	4,618	19,615	23	82	1	2	5,826	25,031
Camp 12	9	49	264	1,199	4,937	22,204	59	231	7	31	5,276	23,714
Camp 22	10	54	207	998	4,355	21,103	15	61	-	-	4,587	22,216
Camp 16	9	46	282	1,248	4,570	20,410	19	84	-	-	4,880	21,788
Camp 19	5	15	400	1,801	4,217	18,160	201	817	3	10	4,826	20,803
Kutupalong RC*	2,833	14,907	155	609	541	2,159	18	59	1	3	3,548	17,737
Camp 17	35	153	216	880	2,632	10,949	1,136	4,967	1	3	4,020	16,952
Camp 27	29	142	275	1,300	2,698	12,142	148	678	-	-	3,150	14,262
Camp 21	13	57	143	617	2,729	11,125	129	470	3	8	3,017	12,277
Camp 23	252	1,155	287	1,222	2,106	8,517	16	69	-	-	2,661	10,963
Camp 25	17	85	252	1,122	1,870	8,271	4	19	-	-	2,143	9,497
Camp 20	58	260	117	490	1,294	5,384	325	1,312	-	-	1,794	7,446
Camp 4 Extension	60	236	135	597	1,170	4,732	130	547	-	-	1,495	6,112
Camp 20 Extension	78	328	88	393	725	3,016	224	871	4	22	1,119	4,630
No camp**	102	421	87	357	823	3,538	177	717	110	468	1,299	5,501
<b>Total</b>	<b>15,278</b>	<b>74,222</b>	<b>21,877</b>	<b>94,625</b>	<b>168,418</b>	<b>723,363</b>	<b>4,086</b>	<b>16,765</b>	<b>210</b>	<b>886</b>	<b>209,869</b>	<b>909,861</b>

\*Kutupalong RC includes 14,277 registered refugees of 2,617 families & Nayapara RC includes 19,895 registered refugees of 3,704 families

\*\*This represents refugees residing outside formal camp boundaries

## Population figures by specific needs

Camp	Families with separated children	Families with unaccompanied children	Families with a person with disability	Families with older person at risk	Families with older person at risk with children	Families with people with serious medical condition	Single male parents with infants	Single female parent	Families with people with specific needs
Camp 26	171	53	279	356	114	216	81	2,174	3,226
Camp 15	234	60	354	589	199	460	63	1,607	3,215
Camp 1E	174	46	553	464	326	490	56	1,165	2,947
Camp 7	225	30	379	384	258	476	103	1,305	2,891
Nayapara RC	175	43	577	155	49	1,180	36	1,166	2,778
Camp 13	244	78	312	394	207	346	63	1,423	2,805
Camp 1W	165	32	402	449	215	443	66	1,270	2,778
Camp 3	203	63	373	369	288	321	65	1,427	2,684
Camp 24	176	73	301	284	121	256	43	1,642	2,639
Camp 4	242	88	199	296	207	295	101	1,508	2,586
Camp 9	119	66	398	402	262	499	107	1,049	2,544
Camp 10	131	72	392	349	223	512	96	990	2,416
Camp 8E	165	76	327	354	228	390	91	1,064	2,282
Camp 2E	161	54	261	250	202	305	54	1,221	2,275
Camp 18	152	67	245	229	169	291	81	1,130	2,082
Camp 11	168	60	264	289	157	233	67	1,058	1,977
Camp 5	154	63	219	298	160	221	60	1,099	1,973
Camp 14	119	45	185	314	138	305	43	966	1,909
Camp 6	165	44	210	242	130	314	43	836	1,845
Camp 2W	108	18	288	241	115	271	59	810	1,764
Camp 8W	107	37	213	248	165	281	56	781	1,699
Kutupalong RC	52	15	372	96	36	787	6	548	1,555
Camp 12	81	33	144	203	102	138	33	767	1,461
Camp 19	124	33	190	220	82	117	48	765	1,427
Camp 16	92	22	167	201	81	159	35	704	1,339
Camp 17	106	21	142	150	80	123	43	697	1,242
Camp 22	70	18	159	156	77	154	16	580	1,123
Camp 27	55	13	99	89	35	63	21	729	1,026
Camp 23	50	12	72	97	43	69	11	752	1,020
Camp 21	67	24	110	96	32	105	35	513	902
Camp 25	38	23	75	83	33	87	18	493	754
Camp 20	32	15	72	59	43	73	17	289	546
Camp 4 Extension	22	14	58	46	39	47	16	194	413
Camp 20 Extension	22	12	41	32	22	27	10	119	289
No camp	19	6	29	40	12	22	7	142	331
<b>Total</b>	<b>4,388</b>	<b>1,429</b>	<b>8,461</b>	<b>8,524</b>	<b>4,650</b>	<b>10,076</b>	<b>1,750</b>	<b>32,983</b>	<b>64,743</b>