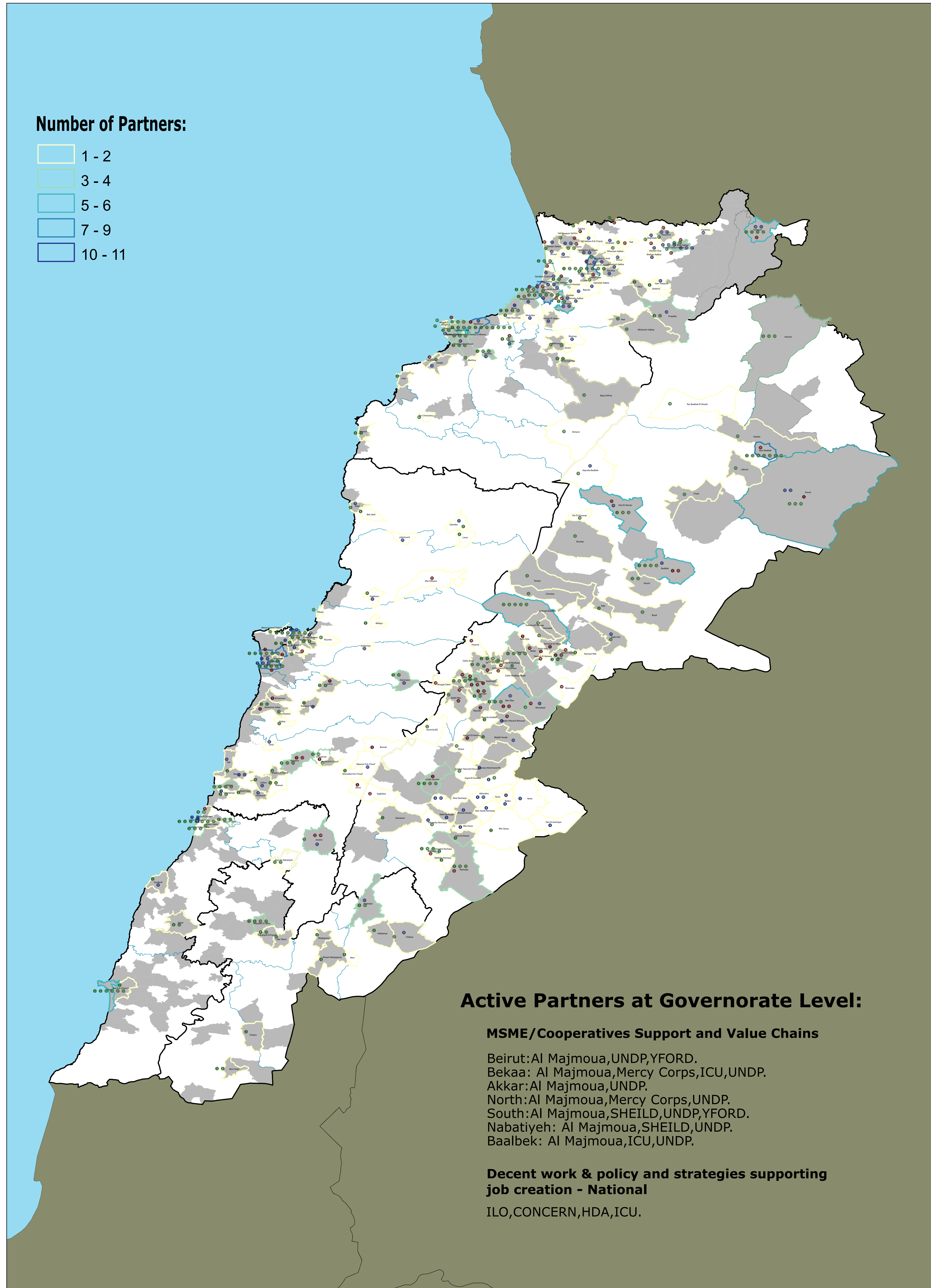
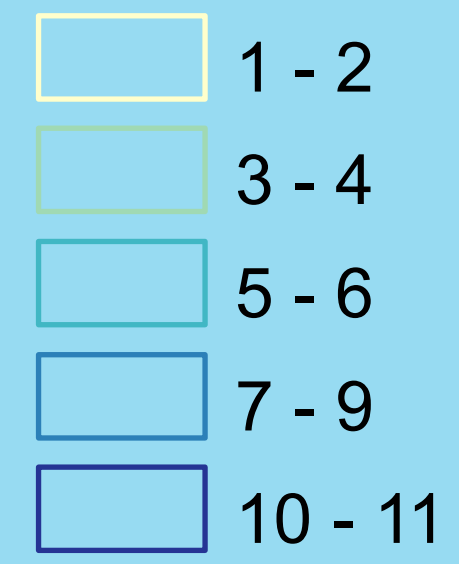




Number of Partners:



Active Partners at Governorate Level:

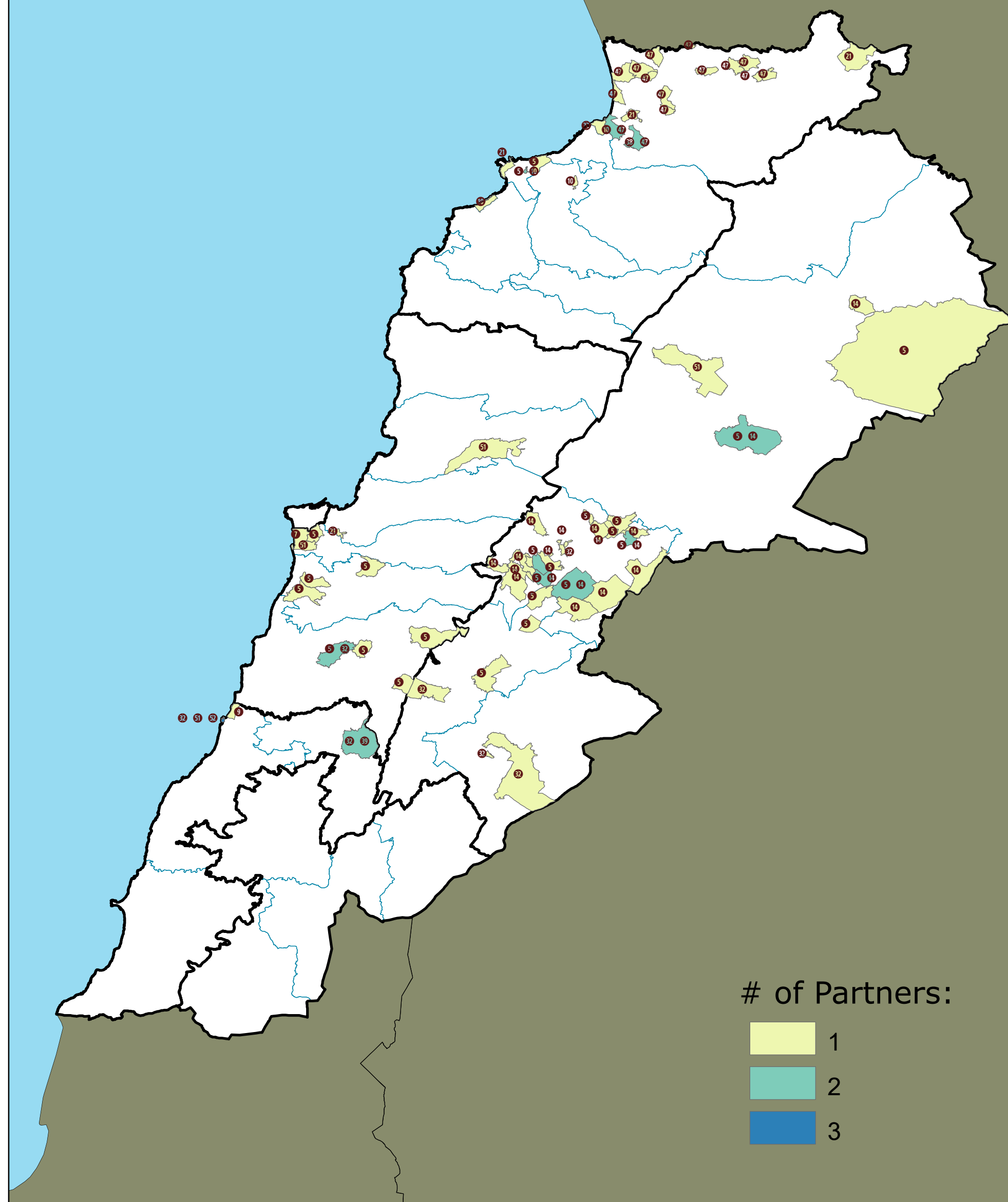
MSME/Cooperatives Support and Value Chains

Beirut: Al Majmoua, UNDP, YFORD.
Bekaa: Al Majmoua, Mercy Corps, ICU, UNDP.
Akkar: Al Majmoua, UNDP.
North: Al Majmoua, Mercy Corps, UNDP.
South: Al Majmoua, SHEILD, UNDP, YFORD.
Nabatiyeh: Al Majmoua, SHEILD, UNDP.
Baalbek: Al Majmoua, ICU, UNDP.

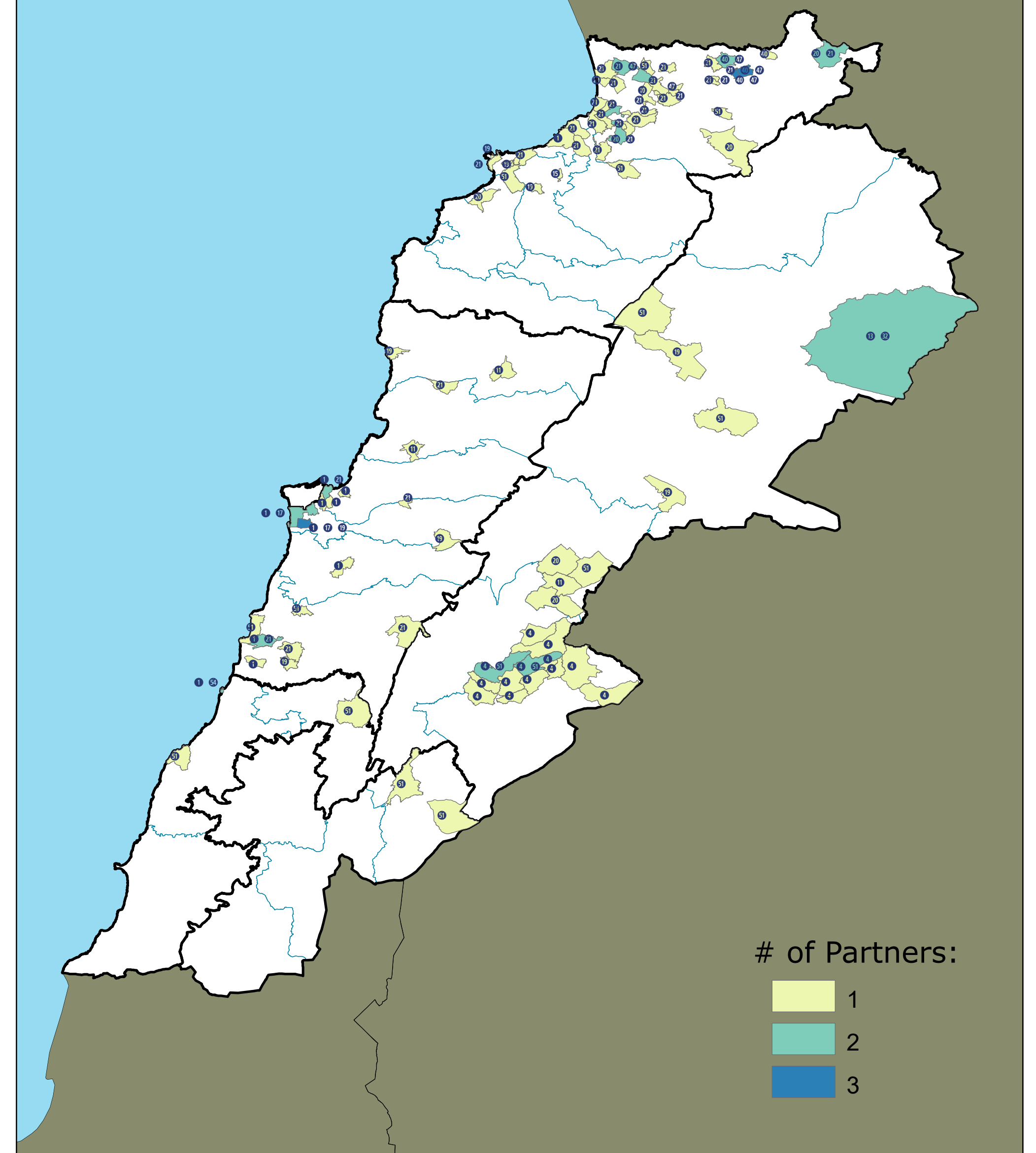
Decent work & policy and strategies supporting job creation - National

ILO, CONCERN, HDA, ICU.

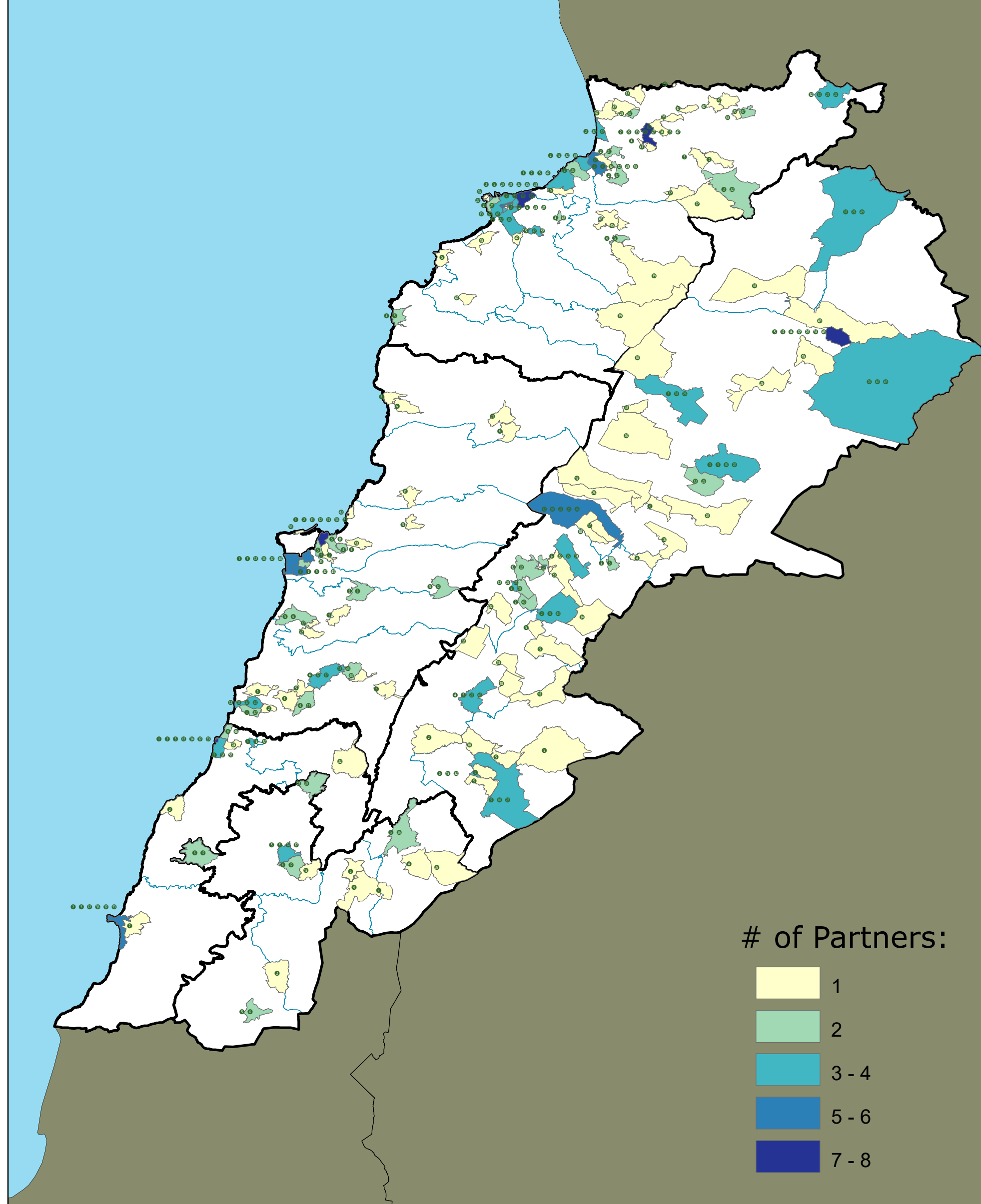
MSME/Cooperatives Support and Value Chains



Job creation through investment in infrastructures and assets



Workforce employability improved



Administrative Boundaries:

- Vulnerable Cadastres
- Districts
- Governorates

Type of Support:

- MSME/Cooperatives Support and Value Chains
- Job creation through investment in infrastructures and assets
- Workforce employability improved

- | | |
|------------------------------------|-------------------------------|
| 1 ACTED | 29 Lebanese Relief Council |
| 2 ANERA | 30 Lebanon Support |
| 3 ARCS | 31 Mentor Arabia |
| 4 AVSI | 32 Mercy Corps |
| 5 Al Majmouaa | 33 Mercy-USA for Aid and Dev. |
| 6 Avsi-Cesvi | 34 Mouvement Social |
| 7 Basmeh & Zeitooneh | 35 NRC |
| 8 CARE | 36 Nabaa |
| 9 CESVI | 37 Nawayya network |
| 10 CONCERN | 38 Near East Foundation |
| 11 Caritas Lebanon | 39 OXFAM |
| 12 DOT | 40 PCPM |
| 13 DRC | 41 PU-AMI |
| 14 GVC | 42 RMF |
| 15 HDA | 43 Right to Play |
| 16 HWA | 44 Rural Entrepreneurs |
| 17 Hilfswerk Austria International | 45 SAFADI |
| 18 ICU | 46 SB Overseas |
| 19 ILO | 47 SCI |
| 20 IOM | 48 SIF |
| 21 IRC | 49 TDH |
| 22 Injaz | 50 UN-Women |
| 23 International Alert | 51 UNDP |
| 24 Islamic Relief Lebanon | 52 UNIDO |
| 25 LLWB | 53 UNRWA |
| 26 LOST | 54 WVI |
| 27 Leb Relief | 55 YFORD |
| 28 Lebanese Developers | |