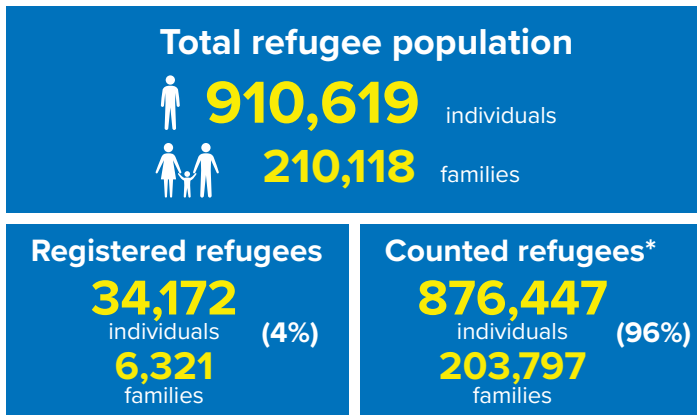
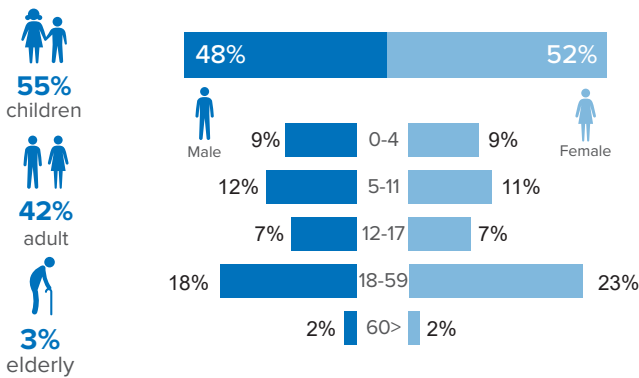


## Refugee population figure

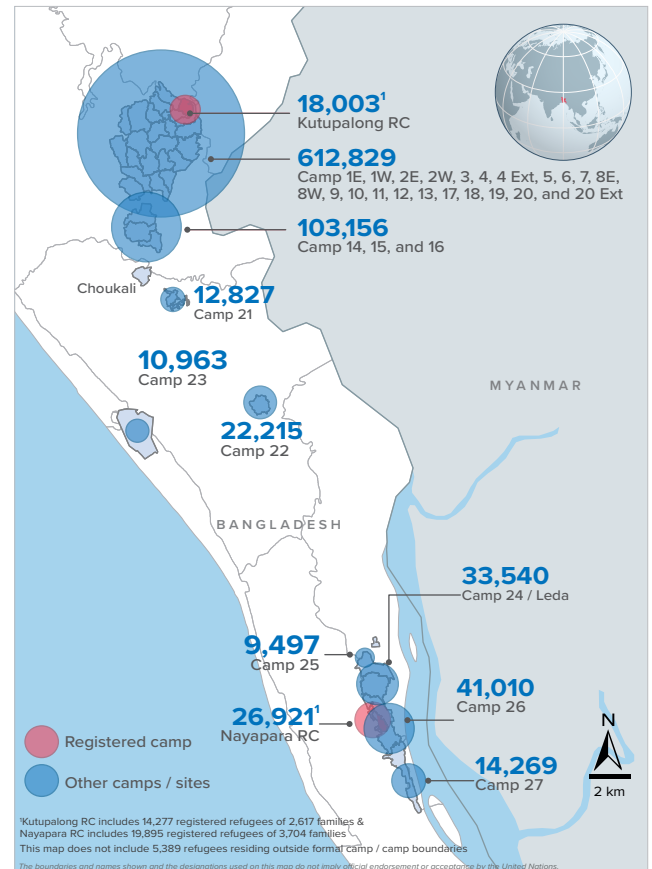


\* Some refugees living in host communities and in certain locations beyond the camp boundaries may not have been counted.

## Demography

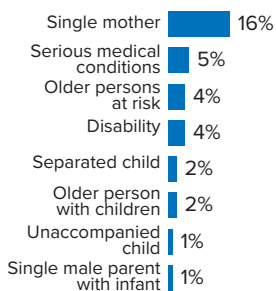


## Refugee population density



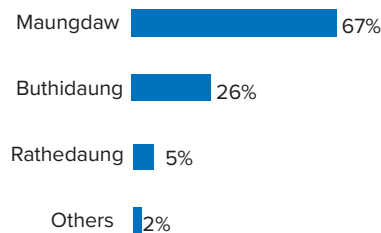
## Specific needs

**31%** of the families have been identified with at least one protection vulnerability\*



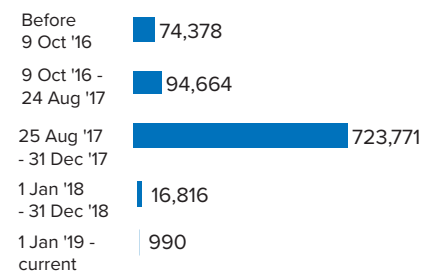
## Place of origin

**67%** of the Rohingya refugees comes from Maungdaw Township



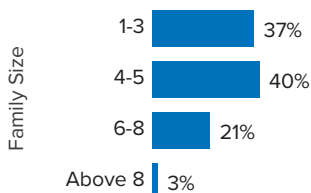
## Period of arrival

**81%** of current population arrived between Aug. 2017 to date



## Family size breakdown

**40%** of the families have a standard family size of 4-5 persons



## Linking exercise

The Linking Exercise, conducted from December 2017 until February 2018, was a collaborative effort between the Government of Bangladesh and the United Nations High Commissioner for Refugees that aimed to merge the family based Rohingya population data collected through the Family Counting Exercise with attributes of the individual Rohingya population data collected by the Ministry of Home Affairs.

The exercise was conducted with a view to creating a unified dataset with individual data grouped into families which will be used to better protect and assist families.

\*Figures are the percentage of total families with at least one person with a specific need. More than one specific need may be present within one family.

## Age and gender breakdown by camp/site

Camp	Infant female below 1	Infant male below 1	1-4 Children female	1-4 Children male	5-11 Children female	5-11 Children male	12-17 Children female	12-17 Children male	18-59 Adult female	18-59 Adult male	60+ Elderly female	60+ Elderly male	Total Families	Total Individuals
Camp 15	951	899	3,548	3,692	5,303	5,483	3,426	3,605	11,544	9,189	908	905	11,184	49,453
Camp 13	721	772	3,101	3,220	4,521	4,777	2,780	2,859	9,834	7,766	745	686	9,805	41,782
Camp 1W	764	756	2,974	2,980	4,451	4,545	2,695	2,800	9,689	7,795	867	754	9,480	41,070
Camp 26	694	615	3,131	3,132	4,746	5,204	2,971	2,770	9,801	6,756	635	555	9,393	41,010
Camp 1E	677	747	2,837	3,018	4,332	4,552	2,699	2,799	9,477	7,866	818	712	9,333	40,534
Camp 7	721	737	3,051	3,187	4,313	4,493	2,692	2,623	9,290	7,266	725	659	9,455	39,757
Camp 3	699	745	3,031	3,127	4,246	4,451	2,528	2,723	9,434	7,367	696	591	9,196	39,638
Camp 9	627	570	2,813	2,817	3,988	4,061	2,482	2,488	8,584	6,933	712	693	8,694	36,768
Camp 24	506	521	2,278	2,488	4,027	4,146	2,308	2,403	8,002	5,903	543	415	7,760	33,540
Camp 10	627	620	2,594	2,727	3,397	3,747	2,147	2,085	7,792	6,110	599	522	7,653	32,967
Camp 4	581	636	2,466	2,609	3,616	3,736	2,059	2,067	7,681	6,000	521	410	7,945	32,382
Camp 8W	545	516	2,621	2,567	3,427	3,633	2,034	2,145	7,638	6,093	606	534	7,466	32,359
Camp 14	561	586	2,317	2,559	3,394	3,737	2,261	2,245	7,303	5,825	605	524	7,051	31,917
Camp 11	547	577	2,366	2,389	3,378	3,584	2,136	2,190	7,260	5,924	533	495	7,127	31,379
Camp 8E	499	499	2,248	2,326	3,364	3,415	2,307	2,235	7,362	5,900	538	554	7,214	31,247
Camp 2E	558	531	2,335	2,369	3,354	3,626	1,813	1,860	7,286	5,470	519	445	7,302	30,166
Nayapara RC	86	90	1,549	1,624	2,913	2,994	2,301	2,359	7,139	5,005	447	414	5,701	26,921
Camp 18	472	498	2,203	2,232	2,871	2,989	1,787	1,683	6,395	4,996	356	357	6,552	26,839
Camp 2W	428	437	1,931	2,026	2,937	3,169	1,639	1,617	6,130	4,817	497	390	5,969	26,018
Camp 5	435	473	1,963	2,028	2,779	2,830	1,539	1,622	5,943	4,622	465	422	6,048	25,121
Camp 6	522	464	2,012	2,153	2,714	2,925	1,471	1,550	5,803	4,582	438	390	5,827	25,024
Camp 12	403	387	1,751	1,867	2,551	2,804	1,711	1,643	5,523	4,288	438	379	5,279	23,745
Camp 22	410	381	1,598	1,800	2,551	2,615	1,671	1,667	4,846	3,964	378	334	4,587	22,215
Camp 16	433	404	1,607	1,703	2,351	2,569	1,522	1,434	5,023	4,028	385	327	4,881	21,786
Camp 19	336	324	1,590	1,675	2,243	2,489	1,432	1,465	4,860	3,784	349	286	4,826	20,833
Kutupalong RC	78	58	1,018	1,170	1,926	2,054	1,469	1,431	4,599	3,687	264	249	3,549	18,003
Camp 17	270	301	1,441	1,432	1,890	1,982	1,041	1,043	4,029	3,087	243	241	4,023	17,000
Camp 27	237	217	1,094	1,148	1,674	1,710	1,030	1,063	3,307	2,384	219	186	3,150	14,269
Camp 21	242	227	965	1,016	1,416	1,481	766	818	3,094	2,477	187	138	3,147	12,827
Camp 23	181	199	808	845	1,451	1,491	632	650	2,687	1,690	170	159	2,661	10,963
Camp 25	140	158	710	701	1,105	1,189	742	685	2,209	1,578	168	112	2,143	9,497
Camp 20	128	140	577	658	811	878	416	453	1,834	1,361	127	98	1,810	7,481
Camp 4 Extension	110	110	486	546	694	714	340	349	1,477	1,179	92	81	1,494	6,178
Camp 20 Extension	94	78	374	401	479	495	260	250	1,105	890	65	50	1,121	4,541
No camp	100	86	446	431	587	616	299	321	1,283	1,059	91	70	1,292	5,389
<b>Total</b>	<b>15,383</b>	<b>15,359</b>	<b>67,834</b>	<b>70,663</b>	<b>99,800</b>	<b>105,184</b>	<b>61,406</b>	<b>62,000</b>	<b>215,263</b>	<b>167,641</b>	<b>15,949</b>	<b>14,137</b>	<b>210,118</b>	<b>910,619</b>

\*Kutupalong RC includes 14,277 registered refugees of 2,617 families & Nayapara RC includes 19,895 registered refugees of 3,704 families

\*\*This represents refugees residing outside formal camp boundaries

## Population figures by period of arrival

Arrival Period	Before 09 Oct 2016		09 Oct 2016 - 24 Aug 2017		25 Aug 2017 - 31 Dec 2017		01 Jan 2018 - 31 Dec 2018		01 Feb 2019 - Current date		Total Families	Total Individuals
Camp	Total Families	Total Individuals	Total Families	Total Individuals	Total Families	Total Individuals	Total Families	Total Individuals	Total Families	Total Individuals		
Camp 15	11	47	761	3,376	10,400	45,977	12	53	-	-	11,184	49,453
Camp 13	16	60	785	3,433	8,928	37,983	76	306	-	-	9,805	41,782
Camp 26	72	352	828	3,682	8,057	35,087	436	1,889	-	-	9,393	41,010
Camp 1W	25	95	1,043	4,496	8,384	36,385	28	94	-	-	9,480	41,070
Camp 1E	40	188	1,651	7,118	7,607	33,107	34	119	1	2	9,333	40,534
Camp 3	21	99	940	4,143	8,202	35,259	33	137	-	-	9,196	39,638
Camp 7	116	506	1,091	4,707	8,157	34,194	88	339	3	11	9,455	39,757
Camp 9	99	393	2,087	8,476	6,478	27,793	30	106	-	-	8,694	36,768
Camp 24	2,172	10,522	523	2,210	5,049	20,756	16	52	-	-	7,760	33,540
Camp 10	13	56	616	2,633	7,001	30,192	23	86	-	-	7,653	32,967
Camp 8W	27	113	639	2,795	6,718	29,134	81	315	1	2	7,466	32,359
Camp 4	33	135	342	1,407	7,300	29,711	270	1,129	-	-	7,945	32,382
Camp 14	13	47	603	2,795	6,391	28,899	44	176	-	-	7,051	31,917
Camp 11	4	19	1,080	4,795	6,024	26,490	19	75	-	-	7,127	31,379
Camp 8E	36	144	849	3,714	6,285	27,243	42	141	2	5	7,214	31,247
Camp 2E	3,328	14,097	1,695	7,104	2,220	8,772	55	175	4	18	7,302	30,166
Nayapara RC*	3,749	20,076	248	968	1,668	5,771	36	106	-	-	5,701	26,921
Camp 18	15	59	166	683	6,332	25,953	39	144	-	-	6,552	26,839
Camp 2W	1,895	8,680	1,422	6,143	2,591	10,985	59	200	2	10	5,969	26,018
Camp 5	30	120	524	2,215	5,471	22,703	23	83	-	-	6,048	25,121
Camp 6	57	250	1,128	5,081	4,621	19,628	20	63	1	2	5,827	25,024
Camp 12	6	33	268	1,213	4,952	22,290	52	207	1	2	5,279	23,745
Camp 22	6	39	207	998	4,360	21,130	14	48	-	-	4,587	22,215
Camp 16	5	25	279	1,236	4,575	20,435	22	90	-	-	4,881	21,786
Camp 19	4	13	398	1,792	4,226	18,224	198	804	-	-	4,826	20,833
Kutupalong RC*	2,840	15,204	155	609	537	2,134	17	56	-	-	3,549	18,003
Camp 17	36	158	213	870	2,637	11,007	1,137	4,965	-	-	4,023	17,000
Camp 27	29	142	275	1,300	2,698	12,149	148	678	-	-	3,150	14,269
Camp 21	15	66	147	636	2,727	11,113	232	892	26	120	3,147	12,827
Camp 23	252	1,155	287	1,222	2,106	8,517	16	69	-	-	2,661	10,963
Camp 25	17	85	252	1,122	1,870	8,271	4	19	-	-	2,143	9,497
Camp 20	60	266	111	489	1,310	5,399	329	1,327	-	-	1,810	7,481
Camp 4 Extension	59	229	131	575	1,171	4,811	133	563	-	-	1,494	6,178
Camp 20 Extension	82	342	66	292	746	3,027	224	868	3	12	1,121	4,541
No camp**	124	563	81	336	766	3,242	113	442	198	806	1,292	5,389
<b>Total</b>	<b>15,317</b>	<b>74,378</b>	<b>21,891</b>	<b>94,664</b>	<b>168,565</b>	<b>723,771</b>	<b>4,103</b>	<b>16,816</b>	<b>242</b>	<b>990</b>	<b>210,118</b>	<b>910,619</b>

\*Kutupalong RC includes 14,277 registered refugees of 2,617 families & Nayapara RC includes 19,895 registered refugees of 3,704 families

\*\*This represents refugees residing outside formal camp boundaries

## Population figures by specific needs

Camp	Families with separated children	Families with unaccompanied children	Families with a person with disability	Families with older person at risk	Families with older person at risk with children	Families with people with serious medical condition	Single male parents with infants	Single female parent	Families with people with specific needs
Camp 26	170	53	280	357	113	215	81	2,179	3,234
Camp 15	234	60	354	589	198	460	63	1,606	3,213
Camp 1E	174	45	556	461	326	489	57	1,163	2,951
Camp 7	222	28	361	374	243	460	106	1,286	2,842
Nayapara RC	176	41	607	164	50	1,197	35	1,185	2,816
Camp 13	243	79	311	395	208	344	64	1,424	2,805
Camp 1W	169	32	404	449	215	447	66	1,272	2,776
Camp 3	200	61	374	367	288	320	65	1,424	2,685
Camp 24	177	73	299	285	121	256	43	1,637	2,632
Camp 4	246	91	203	301	205	293	101	1,505	2,590
Camp 9	149	73	382	396	260	487	95	1,046	2,543
Camp 10	125	79	381	336	239	505	93	1,036	2,436
Camp 8E	152	69	338	364	239	410	83	1,057	2,318
Camp 2E	160	54	264	253	207	307	53	1,220	2,276
Camp 18	152	62	238	220	167	293	81	1,133	2,082
Camp 11	167	61	263	290	155	229	65	1,058	1,979
Camp 5	158	68	213	296	163	214	61	1,094	1,965
Camp 14	119	45	185	314	138	305	43	968	1,912
Camp 6	164	44	212	241	130	314	42	836	1,851
Camp 2W	109	17	287	240	115	266	59	810	1,753
Camp 8W	95	36	233	266	148	292	79	742	1,686
Kutupalong RC	52	17	344	86	35	772	7	527	1,519
Camp 12	81	33	142	204	103	138	32	768	1,465
Camp 19	122	33	190	219	81	118	46	761	1,418
Camp 16	92	22	167	201	81	159	35	704	1,340
Camp 17	106	22	140	152	82	125	41	705	1,246
Camp 22	69	17	159	156	77	154	16	580	1,120
Camp 27	54	13	99	88	33	63	21	731	1,025
Camp 23	50	12	72	97	43	69	11	752	1,020
Camp 21	66	23	109	96	32	105	35	512	921
Camp 25	38	23	75	83	33	87	18	493	754
Camp 20	26	12	91	68	47	75	19	293	572
Camp 4 Extension	22	13	54	39	35	47	14	190	404
Camp 20 Extension	26	13	45	37	25	41	12	144	316
No camp	20	6	27	39	12	21	8	142	325
<b>Total</b>	<b>4,385</b>	<b>1,430</b>	<b>8,459</b>	<b>8,523</b>	<b>4,647</b>	<b>10,077</b>	<b>1,750</b>	<b>32,983</b>	<b>64,790</b>