

# South Sudan - Refugees Statistics

as of 30 September 2019



## KEY FIGURES

**299,162**  
total refugee population

**98%**  
Living in camps and settlements

**294,176**

**83%**  
Are Women and Children

**67,987**  
Households

**2%**  
Living in urban areas

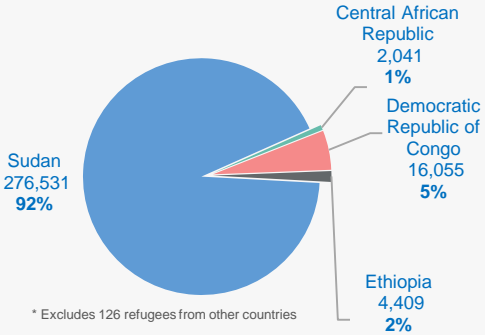
**4,986**

**53%**  
Are female

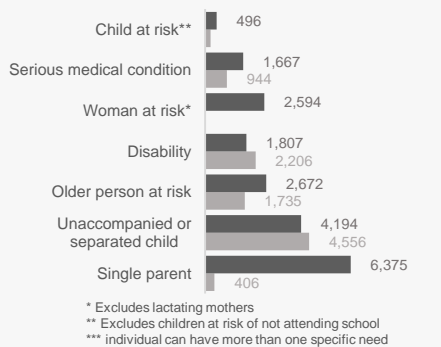
## Age and gender breakdowns



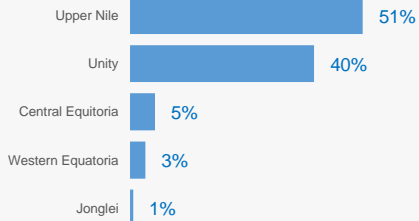
## Main countries of origin\*



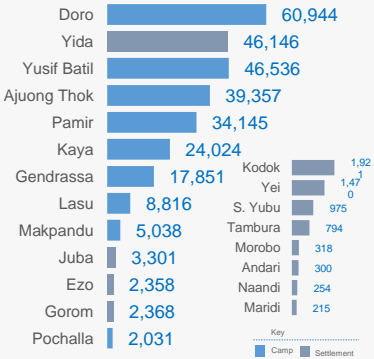
## Main Specific needs



## States hosting refugees



## Refugee locations



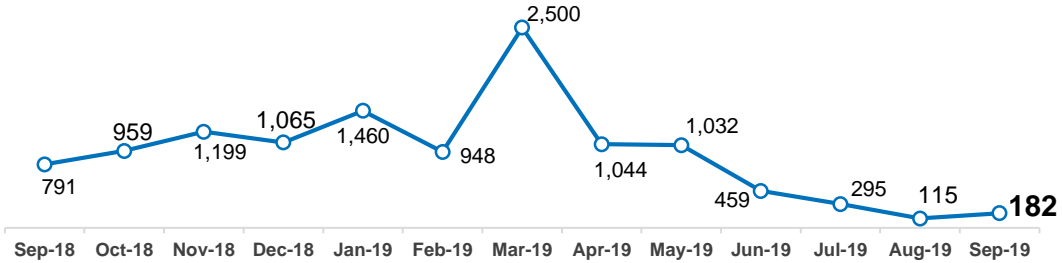
## Our Partners

CRA, AAHI, ACROSS, ACTED, AHA, CARE, CRA, DRC, HDC, IMC, IRC, LWF, RI, SCI, SP, UMCOR, JRS and WVI.

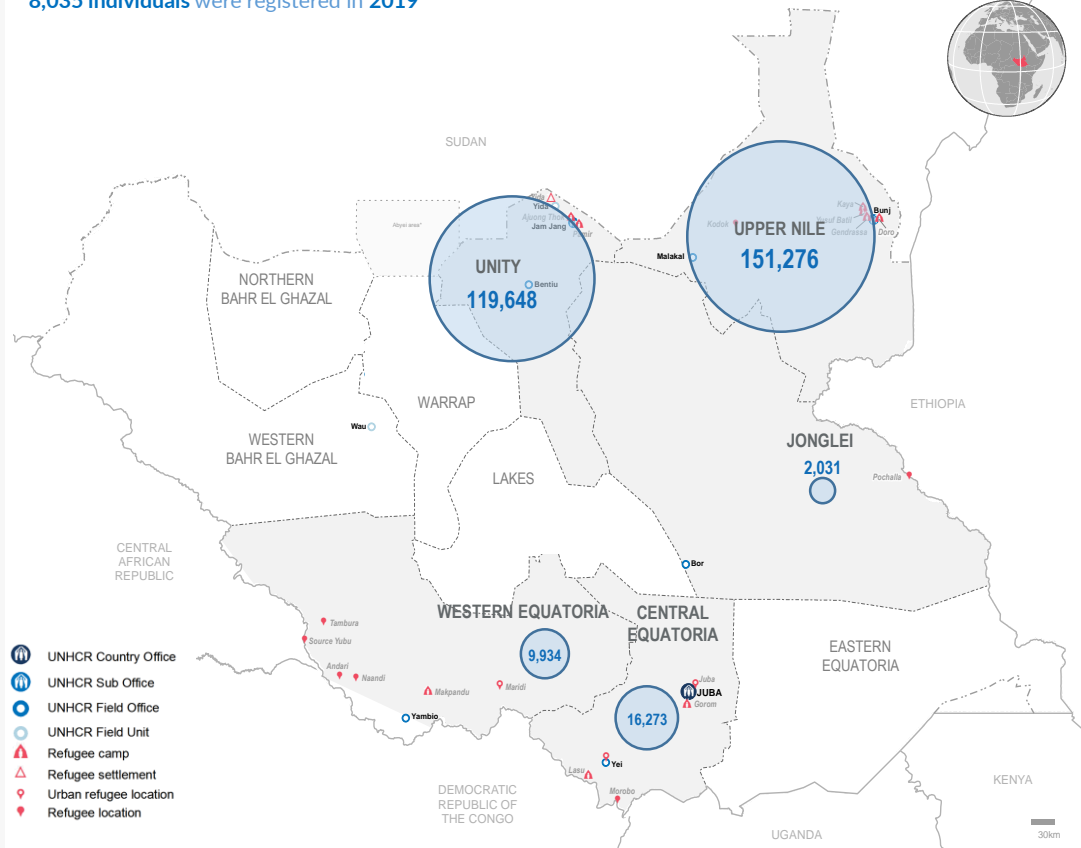
Notes: In addition to 299,162 refugees, South Sudan hosts 3,266 asylum seekers (Juba -3,221; Makpandu- 35; Maban-1; Ajuong Thok-6 ; Pamir -3).

## New arrivals trends

September 2018 – September 2019



NOTE: In addition to 297,952 registered refugees as of 31st August 2019, South Sudan Operation registered 182 new arrivals refugees, 630 new born babies and activated 398 records as of 30th September 2019. Total of 8,035 individuals were registered in 2019



# South Sudan Refugee statistics: Population by Location, Sex and Age Group

as of the 30-September-2019



State	Location	0 - 4 years			5 - 11 years			12 - 17 years			18 - 59 years			60 years +			Total			Households		
		F	M	Total	F	M	Total	F	M	Total	F	M	Total	F	M	Total	F	M	Total	F	M	Total
Upper Nile	Doro	5,625	5,884	11,509	8,045	8,520	16,565	4,994	5,122	10,116	12,224	9,351	21,575	649	530	1,179	31,537	29,407	60,944	7,624	6,011	13,635
	Kaya	2,183	2,412	4,595	2,950	3,084	6,034	1,911	1,787	3,698	5,014	3,590	8,604	474	619	1,093	12,532	11,492	24,024	2,757	2,469	5,226
	Yusuf Batil	4,118	4,294	8,412	5,823	6,115	11,938	3,726	3,694	7,420	9,377	7,410	16,787	894	1,085	1,979	23,938	22,598	46,536	4,781	4,613	9,394
	Gendrassa	1,444	1,501	2,945	2,301	2,406	4,707	1,537	1,403	2,940	3,710	2,842	6,552	329	378	707	9,321	8,530	17,851	2,136	1,819	3,955
	Kodok	10	1	11	327	325	652	189	174	363	451	373	824	38	33	71	1,015	906	1,921	327	213	540
	Total	13,380	14,092	27,472	19,446	20,450	39,896	12,357	12,180	24,537	30,776	23,566	54,342	2,384	2,645	5,029	78,343	72,933	151,276	17,625	15,125	32,750
Unity State	Ajounk Thok	3,641	3,722	7,363	5,061	5,135	10,196	3,596	3,923	7,519	7,527	6,206	13,733	332	214	546	20,157	19,200	39,357	4,916	3,107	8,023
	Pamir	3,718	3,803	7,521	4,553	4,554	9,107	2,972	2,794	5,766	6,868	4,396	11,264	303	184	487	18,414	15,731	34,145	5,662	2,374	8,036
	Yida	4,273	4,365	8,638	7,262	7,310	14,572	4,495	4,042	8,537	10,094	3,639	13,733	418	248	666	26,542	19,604	46,146	6,924	1,966	8,890
	Total	11,632	11,890	23,522	16,876	16,999	33,875	11,063	10,759	21,822	24,489	14,241	38,730	1,053	646	1,699	65,113	54,535	119,648	17,502	7,447	24,949
Central Equatoria	Gorom	206	185	391	257	281	538	163	182	345	504	544	1,048	33	13	46	1,163	1,205	2,368	369	468	837
	Juba	103	99	202	183	182	365	123	110	233	405	2,006	2,411	6	84	90	820	2,481	3,301	217	2,009	2,226
	Lasu	333	361	694	1,243	1,206	2,449	782	761	1,543	2,024	1,744	3,768	236	126	362	4,618	4,198	8,816	1,266	1,208	2,474
	Morobo	11	14	25	52	55	107	28	35	63	66	48	114	3	6	9	160	158	318	38	41	79
	Yei	104	121	225	157	206	363	122	128	250	256	347	603	15	14	29	654	816	1,470	231	309	540
	Total	757	780	1,537	1,892	1,930	3,822	1,218	1,216	2,434	3,255	4,689	7,944	293	243	536	7,415	8,858	16,273	2,121	4,035	6,156
Jonglei State	Pochalla	177	201	378	221	262	483	192	228	420	548	146	694	46	10	56	1,184	847	2,031	436	88	524
	Total	177	201	378	221	262	483	192	228	420	548	146	694	46	10	56	1,184	847	2,031	436	88	524
Western Equatoria	Andari	12	9	21	41	49	90	19	16	35	82	52	134	8	12	20	162	138	300	60	61	121
	Ezo	34	40	74	238	266	504	171	156	327	787	495	1,282	88	83	171	1,318	1,040	2,358	561	426	987
	Makpandu	430	466	896	591	552	1,143	285	273	558	1,135	1,164	2,299	62	80	142	2,503	2,535	5,038	734	1,034	1,768
	Maridi	5	2	7	30	30	60	20	21	41	45	60	105	0	2	2	100	115	215	31	52	83
	Naandi	9	6	15	37	35	72	22	28	50	52	49	101	7	9	16	127	127	254	39	45	84
	Source yubu	18	22	40	145	168	313	77	77	154	280	157	437	15	16	31	535	440	975	196	125	321
	Tambura	26	32	58	140	140	280	70	68	138	195	111	306	8	4	12	439	355	794	148	96	244
	Total	534	577	1,111	1,222	1,240	2,462	664	639	1,303	2,576	2,088	4,664	188	206	394	5,184	4,750	9,934	1,769	1,839	3,608
Grand total		26,480	27,540	54,020	39,657	40,881	80,538	25,494	25,022	50,516	61,644	44,730	106,374	3,964	3,750	7,714	157,239	141,923	299,162	39,453	28,534	67,987



# Asylum Seekers Population by Country of Origin, Sex and Age Group in South Sudan

as of the 30-September-2019



Country of Origin	Location	Principal Applicants			Persons																	
		Total Cases	Female headed		0 - 4 years			5 - 11 years			12 - 17 years			18 - 59 years			60 years +			Total		
			Cases	%	F	M	T	F	M	T	F	M	T	F	M	T	F	M	T	F	M	T
BURUNDI	Juba	535	14	3%	15	12	27	8	8	16	3	4	7	60	522	582	0	0	0	86	546	632
	Total	535	14	3%	15	12	27	8	8	16	3	4	7	60	522	582	-	-	-	86	546	632
CHAD	Juba	2	-	0%	-	-	-	-	-	-	-	-	-	-	2	2	-	-	-	-	2	2
	Total	2	-	3%	-	-	-	-	-	-	-	-	-	-	-	-	-	-	-	-	2	2
CAMEROON	Juba	2	-	0%	-	-	-	-	-	-	-	-	-	2	2	-	-	-	-	2	2	
	Makpandu	1	-	0%	-	-	-	-	-	-	-	-	-	1	1	-	-	-	-	1	1	
	Total	3	-	0%	-	-	-	-	-	-	-	-	-	3	3	-	-	-	-	3	3	
ERITREA	Juba	1,690	323	18%	93	128	221	35	38	73	1	7	8	488	1,344	1,832	5	51	56	622	1,568	2,190
	Makpandu	20	-	0%	-	3	3	-	3	3	-	-	-	2	20	22	-	-	-	2	26	28
	Total	1,710	323	19%	93	131	224	35	41	76	1	7	8	490	1,364	1,854	5	51	56	624	1,594	2,218
ETHIOPIA	Doro	1	-	0%	-	-	-	-	-	-	-	-	-	1	1	-	-	-	-	1	1	
	Juba	251	54	18%	13	19	32	8	3	11	1	-	1	106	196	302	-	2	2	128	220	348
	Makpandu	5	-	0%	-	-	-	-	-	-	-	-	-	5	5	-	-	-	-	5	5	
	Ajyoung Thok	1	1	100%	-	1	1	-	1	1	-	-	-	2	2	4	-	-	-	2	4	6
	Total	258	55	21%	13	20	33	8	4	12	1	-	1	108	204	312	-	2	2	130	230	360
SOMALIA	Juba	29	1	3%	-	-	-	-	-	-	-	-	-	1	28	29	-	-	-	1	28	29
	Makpandu	1	-	0%	-	-	-	-	-	-	-	-	-	1	1	-	-	-	-	1	1	
	Total	30	1	3%	-	-	-	-	-	-	-	-	-	1	29	30	-	-	-	1	29	30
SUDAN	Juba	7	-	0%	-	1	1	-	-	-	-	-	-	1	5	6	-	2	2	1	8	9
	Pamir	-	-	0%	-	-	-	-	-	-	-	-	-	-	3	3	-	-	-	-	3	3
	Total	7	-	0%	-	1	1	-	-	-	-	-	-	1	8	9	-	2	2	1	11	12
SYRIA UGANDA DRC	Juba	1	-	0%	-	-	-	-	-	-	-	-	-	1	1	-	-	-	-	1	1	
	Juba	1	-	0%	-	-	-	-	-	-	-	-	-	1	1	-	-	-	-	1	1	
	Juba	4	-	0%	2	-	2	-	-	-	-	-	-	1	4	5	-	-	-	3	4	7
	Total	6	-	0%	-	-	-	-	-	-	-	-	-	2	2	-	-	-	-	2	2	
Grand Total		2,551	393	15.41%	121	164	285	51	53	104	5	11	16	660	2,132	2,792	5	55	60	842	2,417	3,266