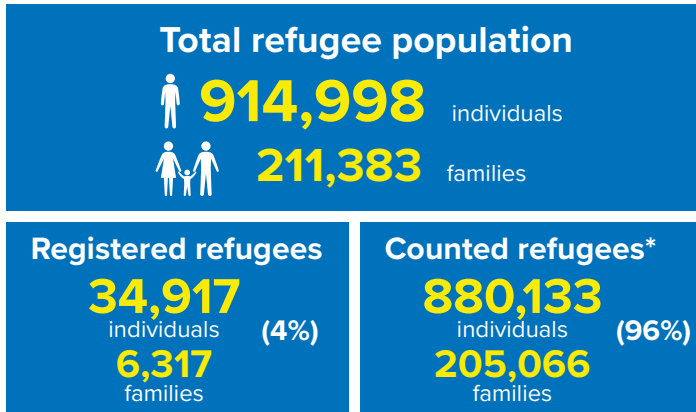
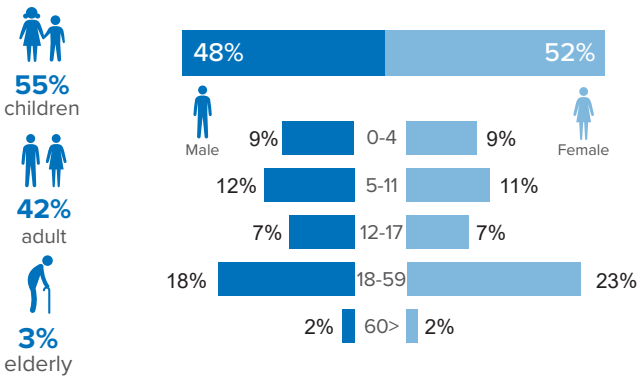


Refugee population figure

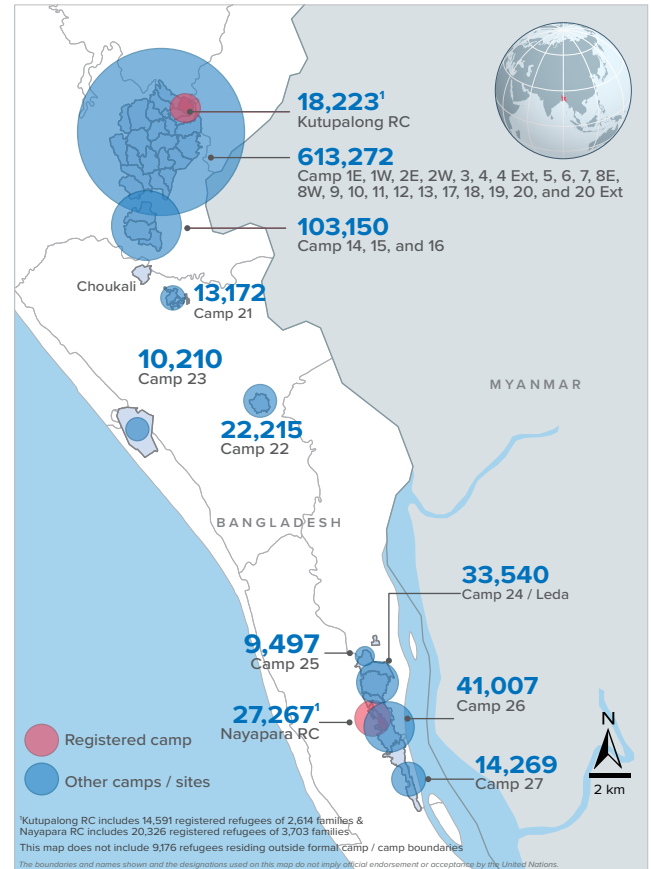


* Some refugees living in host communities and in certain locations beyond the camp boundaries may not have been counted.

Demography

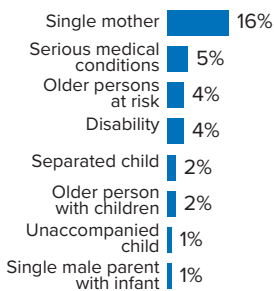


Refugee population density



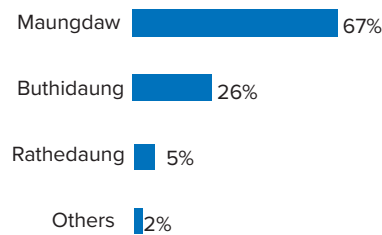
Specific needs

31% of the families have been identified with at least one protection vulnerability*



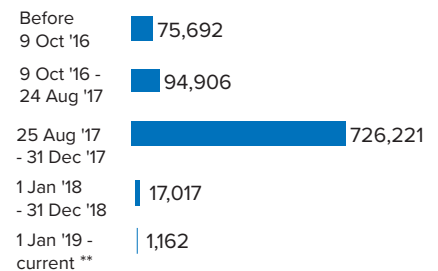
Place of origin

67% of the Rohingya refugees comes from Maungdaw Township



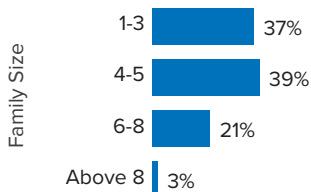
Period of arrival

81% of current population arrived between Aug. 2017 to date



Family size breakdown

39% of the families have a standard family size of 4-5 persons



Linking exercise

The Linking Exercise, conducted from December 2017 until February 2018, was a collaborative effort between the Government of Bangladesh and the United Nations High Commissioner for Refugees that aimed to merge the family based Rohingya population data collected through the Family Counting Exercise with attributes of the individual Rohingya population data collected by the Ministry of Home Affairs.

The exercise was conducted with a view to creating a unified dataset with individual data grouped into families which will be used to better protect and assist families.

*Figures are the percentage of total families with at least one person with a specific need. More than one specific need may be present within one family.

**In 2019, the number of new arrivals includes those arriving directly from Myanmar as well as other locations.

Age and gender breakdown by camp/site

Camp	Infant female below 1	Infant male below 1	1-4 Children Female	1-4 Children Male	5-11 Children Female	5-11 Children Male	12-17 Children Female	12-17 Children Male	18-59 Adult Female	18-59 Adult Male	60+ Elderly Female	60+ Elderly Male	Total Families	Total Individuals
Camp 15	951	899	3,546	3,687	5,296	5,474	3,423	3,595	11,536	9,180	907	906	11,175	49,400
Camp 13	721	772	3,101	3,220	4,521	4,777	2,780	2,857	9,830	7,761	745	685	9,800	41,770
Camp 1W	764	756	2,974	2,980	4,451	4,542	2,694	2,800	9,687	7,791	867	755	9,477	41,061
Camp 26	694	615	3,131	3,132	4,744	5,204	2,971	2,770	9,800	6,756	635	555	9,392	41,007
Camp 1E	677	747	2,837	3,018	4,331	4,555	2,699	2,800	9,476	7,868	818	712	9,333	40,538
Camp 3	699	745	3,034	3,131	4,249	4,452	2,529	2,723	9,438	7,372	696	591	9,200	39,659
Camp 7	716	733	3,041	3,179	4,303	4,490	2,688	2,620	9,248	7,225	725	659	9,409	39,627
Camp 9	628	573	2,815	2,821	3,989	4,062	2,482	2,488	8,602	6,948	714	695	8,715	36,817
Camp 24	506	521	2,278	2,488	4,027	4,146	2,308	2,403	8,002	5,903	543	415	7,760	33,540
Camp 10	627	620	2,593	2,726	3,395	3,747	2,145	2,083	7,790	6,107	599	521	7,651	32,953
Camp 4	581	637	2,466	2,607	3,618	3,737	2,060	2,069	7,683	6,000	521	410	7,947	32,389
Camp 8W	545	516	2,620	2,567	3,427	3,633	2,034	2,145	7,637	6,093	606	534	7,465	32,357
Camp 14	561	586	2,317	2,559	3,394	3,737	2,261	2,244	7,301	5,823	605	524	7,049	31,912
Camp 11	550	581	2,371	2,395	3,386	3,591	2,141	2,192	7,295	5,956	533	496	7,165	31,487
Camp 8E	497	499	2,247	2,326	3,364	3,415	2,307	2,235	7,358	5,895	537	554	7,208	31,234
Camp 2E	558	530	2,334	2,368	3,358	3,627	1,815	1,861	7,283	5,470	519	445	7,299	30,168
Nayapara RC	87	90	1,496	1,534	2,843	2,964	2,325	2,383	7,378	5,284	461	422	5,708	27,267
Camp 18	471	496	2,199	2,231	2,871	2,983	1,787	1,680	6,384	4,987	355	357	6,540	26,801
Camp 2W	430	440	1,928	2,028	2,939	3,174	1,638	1,619	6,143	4,822	496	391	5,979	26,048
Camp 5	435	473	1,963	2,028	2,779	2,830	1,539	1,622	5,943	4,623	465	422	6,048	25,122
Camp 6	520	461	2,010	2,144	2,699	2,914	1,467	1,545	5,776	4,568	438	389	5,804	24,931
Camp 12	403	387	1,751	1,868	2,551	2,804	1,711	1,643	5,523	4,287	438	379	5,278	23,745
Camp 22	410	381	1,598	1,800	2,551	2,615	1,671	1,667	4,846	3,964	378	334	4,587	22,215
Camp 16	433	404	1,609	1,708	2,358	2,578	1,525	1,444	5,031	4,037	385	326	4,889	21,838
Camp 19	336	324	1,590	1,675	2,243	2,489	1,432	1,465	4,860	3,784	349	286	4,826	20,833
Kutupalong RC	78	58	977	1,113	1,855	2,013	1,519	1,480	4,749	3,849	276	256	3,555	18,223
Camp 17	282	310	1,481	1,469	1,938	2,034	1,065	1,068	4,183	3,206	250	248	4,184	17,534
Camp 27	237	217	1,094	1,148	1,674	1,710	1,030	1,063	3,307	2,384	219	186	3,150	14,269
Camp 21	244	234	995	1,045	1,462	1,516	777	833	3,182	2,550	191	143	3,243	13,172
Camp 23	169	187	754	772	1,358	1,376	584	616	2,505	1,575	163	151	2,488	10,210
Camp 25	140	158	710	701	1,105	1,189	742	685	2,209	1,578	168	112	2,143	9,497
No Camp	208	194	685	673	898	913	457	462	2,416	2,042	125	103	2,499	9,176
Camp 20	126	139	574	655	807	873	416	453	1,822	1,349	127	98	1,794	7,439
Camp 4 Extension	110	110	486	544	694	714	340	349	1,475	1,177	92	81	1,492	6,172
Camp 20 Extension	94	79	378	403	483	496	264	258	1,118	896	65	53	1,131	4,587
Total	15,488	15,472	67,983	70,743	99,961	105,374	61,626	62,220	216,816	169,110	16,011	14,194	211,383	914,998

*Kutupalong RC includes 14,591 registered refugees of 2,614 families & Nayapara RC includes 20,326 registered refugees of 3,703 families

**This represents refugees residing outside formal camp boundaries.

Block breakdown of this data is available in excel file shared with this factsheet.

Creation date : 30 September 2019 Sources: UNHCR Feedback: bgdcoim.unhcr.org

Population figures by period of arrival

Arrival Period	Before 09 - Oct 2016		09 Oct 2016 - 24 Aug 2017		25 Aug 2017 - 31 Dec 2017		01 Jan 2018 - 31 Dec 2018		01 Jan 2019 - Current date ***		Total Families	Total Individuals
Camp	Total Families	Total Individuals	Total Families	Total Individuals	Total Families	Total Individuals	Total Families	Total Individuals	Total Families	Total Individuals		
Camp 15	11	47	762	3,378	10,390	45,922	12	53			11,175	49,400
Camp 13	16	60	785	3,433	8,923	37,971	76	306			9,800	41,770
Camp 1W	25	95	1,042	4,494	8,383	36,379	27	93			9,477	41,061
Camp 26	72	352	828	3,682	8,056	35,084	436	1,889			9,392	41,007
Camp 1E	40	188	1,651	7,118	7,608	33,113	34	119			9,333	40,538
Camp 3	21	99	940	4,143	8,206	35,280	33	137			9,200	39,659
Camp 7	111	483	1,085	4,690	8,125	34,111	86	334	2	9	9,409	39,627
Camp 9	100	392	2,087	8,474	6,497	27,839	31	112			8,715	36,817
Camp 24	2,172	10,522	523	2,210	5,049	20,756	16	52			7,760	33,540
Camp 10	13	56	616	2,633	6,999	30,178	23	86			7,651	32,953
Camp 4	33	135	342	1,407	7,302	29,718	270	1,129			7,947	32,389
Camp 8W	27	113	639	2,795	6,717	29,132	81	315	1	2	7,465	32,357
Camp 14	12	44	603	2,795	6,390	28,897	44	176			7,049	31,912
Camp 11	5	23	1,082	4,799	6,051	26,569	25	89	2	7	7,165	31,487
Camp 8E	35	143	849	3,714	6,283	27,237	41	140			7,208	31,234
Camp 2E	3,329	14,103	1,691	7,092	2,221	8,782	56	180	2	11	7,299	30,168
Nayapara RC*	3,745	20,377	248	968	1,679	5,816	36	106			5,708	27,267
Camp 18	15	59	166	683	6,321	25,917	38	142			6,540	26,801
Camp 2W	1,894	8,673	1,432	6,182	2,596	11,001	57	192			5,979	26,048
Camp 5	30	120	524	2,215	5,471	22,704	23	83			6,048	25,122
Camp 6	56	246	1,117	5,036	4,610	19,584	20	63	1	2	5,804	24,931
Camp 12	6	33	267	1,212	4,952	22,291	52	207	1	2	5,278	23,745
Camp 22	6	39	207	998	4,360	21,130	14	48			4,587	22,215
Camp 16	5	25	278	1,234	4,584	20,489	22	90			4,889	21,838
Camp 19	4	13	398	1,792	4,226	18,224	198	804			4,826	20,833
Kutupalong RC*	2,841	15,402	158	618	540	2,150	16	53			3,555	18,223
Camp 17	43	180	213	870	2,776	11,480	1,147	4,991	5	13	4,184	17,534
Camp 27	29	142	275	1,300	2,698	12,149	148	678			3,150	14,269
Camp 21	54	212	151	652	2,739	11,164	247	930	52	214	3,243	13,172
Camp 23	228	1,058	270	1,135	1,987	8,005	3	12			2,488	10,210
Camp 25	17	85	252	1,122	1,870	8,271	4	19			2,143	9,497
Camp 20	59	262	111	489	1,297	5,366	327	1,322			1,794	7,439
No camp**	347	1,312	177	672	1,557	5,670	185	632	233	890	2,499	9,176
Camp 4 Extension	58	226	131	575	1,170	4,808	133	563			1,492	6,172
Camp 20 Extension	89	373	68	296	746	3,034	225	872	3	12	1,131	4,587
Total	15,548	75,692	21,968	94,906	169,379	726,221	4,186	17,017	302	1,162	211,383	914,998

*Kutupalong RC includes 14,591 registered refugees of 2,614 families & Nayapara RC includes 20,326 registered refugees of 3,703 families.

**This represents refugees residing outside formal camp boundaries.

***In 2019, the number of new arrivals includes those arriving directly from Myanmar as well as other locations.

Block breakdown of this data is available in excel file shared with this factsheet.

Creation date : 30 September 2019 Sources: UNHCR Feedback: bgdcoim.unhcr.org

Population figures by specific needs

Camp	Families with separated children	Families with unaccompanied children	Families with a person with disability	Families with older person at risk	Families with older person at risk with children	Families with people with serious medical condition	Single male parent with infants	Single female parent	Families with people with specific needs
Camp 26	170	53	280	357	113	215	81	2,178	3,233
Camp 15	235	59	354	590	200	465	63	1,617	3,211
Camp 1E	175	45	556	466	327	490	57	1,174	2,950
Camp 7	225	28	365	377	245	464	106	1,312	2,834
Nayapara RC*	177	41	605	160	50	1,194	35	1,184	2,811
Camp 13	244	79	314	397	218	350	70	1,449	2,804
Camp 1W	168	32	406	451	216	447	66	1,279	2,777
Camp 3	200	61	375	367	288	321	65	1,433	2,686
Camp 24	177	73	299	285	121	256	43	1,637	2,632
Camp 4	246	91	205	302	207	294	101	1,514	2,591
Camp 9	151	73	387	402	263	494	96	1,083	2,548
Camp 10	128	80	382	342	244	511	94	1,065	2,435
Camp 8E	152	69	338	364	239	414	83	1,061	2,317
Camp 2E	163	54	269	254	208	312	55	1,259	2,275
Camp 18	152	62	239	222	170	294	82	1,137	2,081
Camp 11	169	62	267	297	158	239	67	1,084	1,983
Camp 5	158	68	214	296	163	215	61	1,097	1,965
Camp 14	121	45	187	319	143	308	43	1,014	1,912
Camp 6	164	44	213	245	131	316	42	836	1,845
Camp 2W	111	17	291	244	117	269	59	833	1,755
Camp 8W	95	36	235	269	149	295	80	746	1,686
Kutupalong RC*	52	18	342	86	35	769	7	535	1,518
Camp 12	88	35	160	235	112	155	35	832	1,465
Camp 19	123	33	190	222	82	119	47	765	1,418
Camp 16	92	23	171	206	83	164	37	721	1,341
Camp 17	108	23	146	158	83	126	41	728	1,262
Camp 22	69	17	161	156	77	154	16	586	1,120
Camp 27	54	13	99	88	33	63	21	731	1,025
Camp 23	48	12	71	95	42	65	10	710	969
Camp 21	67	24	114	101	32	108	36	546	942
Camp 25	38	23	75	83	33	87	18	493	754
Camp 20	27	12	95	70	48	77	20	305	571
No camp**	22	7	39	63	18	35	32	285	483
Camp 4 Extension	24	14	57	41	36	54	16	213	404
Camp 20 Extension	26	14	48	38	25	47	12	165	317
Total	4,419	1,440	8,549	8,648	4,709	10,186	1,797	33,607	64,920

*Kutupalong RC includes 14,591 registered refugees of 2,614 families & Nayapara RC includes 20,326 registered refugees of 3,703 families.

**This represents refugees residing outside formal camp boundaries.

Block breakdown of this data is available in excel file shared with this factsheet.

Creation date : 30 September 2019 Sources: UNHCR Feedback: bgdcoim.unhcr.org