

# Inter-Agency Working Group – North

<b>Name</b>	Inter-Agency Working Group	<b>Meeting Date</b>	9 April 2019
<b>Meeting Location</b>	UNHCR Qobayat office	<b>Meeting Time</b>	10:30
<b>Chair person</b>	Ita Schuette (UNHCR), Alian Chatry (UNDP), Khaled Osman (MoSA)	<b>Meeting Duration</b>	2 Hours
<b>Minutes Prepared by</b>	Georges Estephan		

<b>1.</b>	<b>Agenda</b>
	<ul style="list-style-type: none"> <li>- Litani River Briefing</li> <li>- Overview of the Eviction situation in Batroun</li> <li>- Sector updates</li> <li>- Lebanon Protection Consortium presentation</li> <li>- AoB</li> </ul>
<b>2.</b>	<b>Discussion</b>
	<ul style="list-style-type: none"> <li>- Meeting was held in Beirut with concerned authorities to discuss the Litani River pollution issue.</li> <li>- The meeting was an open discussion between line ministries &amp; UN agencies with regard to the importance of curbing pollution of the Litani River.</li> <li>- The attendees highlighted the importance of stopping pollution of the Litani River by refugee communities. Which might be achieved through a pilot project entailing movement of (selected) settlements.</li> <li>- The MoEW noted works toward implementation of pilot projects with UNICEF wherein host communities &amp; ISs shall be connected to a mobile treatment plant.</li> <li>- The Litani River Authority underlined the importance of considering all water courses.</li> <li>- During the meeting the issue of the Landlord/ municipal blockage to solutions in many locations was highlighted. Guidance is needed from the central government to authorize robust solutions which can be dismantled upon departure of refugees.</li> <li>- In the North, Water sector partners assessed the high priority sites located within the 200m buffer zone from the rivers. An action plan is set in place to respond to the identified high priority sites &amp; response started in 11 sites while advocacy is needed for the remaining ones where partners are not able to intervene due to municipal/landlord rejection or due to technical constraints.</li> <li>- The ongoing activities in the Litani river might have an impact on the North. a total of 21 sites have so far been identified for intervention to mitigate or manage environmental risks;             <ul style="list-style-type: none"> <li>o 21 sites in North are in need of intervention</li> <li>o work is done in 6 and ongoing in 5 more</li> <li>o the rest are pending approval and some technical challenges</li> <li>o Partners were asked to re-assess more sites surrounding water sources/rivers</li> </ul> </li> <li>- Criteria is 200 m buffer zone (by law its only 15 m)</li> <li>- The regulation is affecting both Lebanese and Syrians who are polluting water sources which include also factories</li> <li>- The target by the government on this is towards all structures disregarding nationality or shelter type. UNHCR reminded agencies on the importance to consider environmental impacts during project planning and implementation.</li> <li>- There are 163 settlement in the north which are located within the 200 buffer zone             <ul style="list-style-type: none"> <li>o 21 settlement with black water issues which were highlighted above</li> <li>o As for the other solid waste issues will be handled by the social stability</li> </ul> </li> <li>- UNHCR also raised the need to map collective shelters, apartments, etc... within the partners area of response.</li> </ul>

- UNICEF partners were not requested to conduct any WASH assessments in Batroun as the sites are at risk of eviction. If these sites will not be evicted, then UNICEF WASH partners will conduct field visits to assess and plan response.

**UNHCR/MoSA presentation on evictions in Batroun: (Presentation enclosed in the email, and the below additional point)**

- UNHCR mentioned that 383 refugees have so far been evicted as a result of the eviction threats in four municipalities in Batroun district: Koubba, Beit Chlela, Kfar Helda and Assia. In Koubba, Solidarites International were able to trace 33 of the 45 families that were initially evicted and provided them with NFIs and ECA based on needs, while DRC and SCI followed up on protection cases and education/CP issues, respectively.
- MoSA conducted a number of meetings with municipality members, Mokhtars and Landowners in Kfar Helda and Beit Chlela in Batroun district, who are opposed to the decision to evict refugee families. Currently the eviction threat has been put on hold by the North Governor until the municipal election in Tripoli is over. Families in Assiya are not planning to relocate. Informally MoSA staff were informed that no evictions will be implemented in Assiya. All the families that are located in Assiya are working in agricultural land.
- As for the discussion to relocate evicted families to Wadi Khaled, Akkar; MoSA called for a meeting with the Governor of Akkar and the mayors from Wadi Khaled. All participants refused the idea of relocating refugee families from Batroun district to Wadi Khaled. Thus, the plan has been cancelled.

**Lebanon Protection Consortium:**

- The Lebanon Protection Consortium (LPC) made a presentation on their programme, which in North Lebanon is being implemented by NRC and GVC. In other parts of Lebanon, ACF also implements activities under the LPC. Thus far, the LPC partners have completed a comprehensive protection assessments in all informal settlements in Lebanon, based on the so called IPSI methodology from GVC. The next step will be to develop a number of Protection Response Plans in particular clusters where the IPSI revealed heightened protection concerns. This will be done in a collaborative way with the partners that are operating in the area and look to identify the actors that are best placed to respond. Thus far in North Lebanon, NRC and GVC are still in the process of developing the first PRPs, while 20 have been presented so far in the Bekaa and the South. In addition to what has been mentioned above, the LPC partners are also looking to advocate on selected protection concerns and to participate in case of need in emergency responses like evictions, fires and flood situations. GVC will cover all the informal settlements in Akkar, while NRC will cover those in T5. The LPC will also look to expand their approach to the Palestinian camps.

**Sector update: Information enclosed within the email:**

- MSF are conducting 3 measles campaigns in public area. MEHE requested all parents to provides the students vaccination booklet to get their vaccinations.
- MSF will target municipalities in Akkar with high number of measles patients and Qoubbe in Tripoli.

**AOB**

- The union of Wadi khalid requested all municipal workers to stop their activities because MoI didn't release the needed funds for the municipalities. All Mayors will start to approach humanitarian actors for response, and as recommended by the IA that humanitarian actors should not get involved.

**3. Participating Agencies:**

- UNHCR,UNDP, MoSA
- Concern WW, LRC, DRC, SCI, RMF, GVC, NRC, IRC, WVL, Mercy Corps, LPC, MSF, IOM, PU-AMI,

**4. Recommendation:**

- Include a presentation on shelter referrals in the next interagency

**Forms to be submitted by April 18, 2019 close of business:**

**Interagency form:**

The survey is accessible through this link: <https://www.surveymonkey.com/r/5SGKYGW>

If you require any assistance, please reach out to us at [lebbeia@unhcr.org](mailto:lebbeia@unhcr.org).

The survey is in English and requires 15 minutes to complete.

**Conflict Sensitivity Mainstreaming survey:**

The survey will take **no longer than 10 minutes** of your time and can be found here:

<https://ee.humanitarianresponse.info/x/#FGGk1H4K>.

The deadline for completing the survey is **COB Thursday April 18**. If you have any question, please reach out to [tom.lambert@undp.org](mailto:tom.lambert@undp.org) or [fadel.saleh@undp.org](mailto:fadel.saleh@undp.org).



**Inter-Agency  
Coordination**  
Lebanon

# INTER- SECTOR WG



# Agenda

---

Page 2

- Litani River updates
- Batroun Eviction updates
- Sector updates
- Lebanon Protection Consortium
- AoB



# Basic Assistance

---

## Key & Important Updates:

### Vasyr

- 50 Caritas Enumerators trained VASyR
- Vasyr = 8 April until 3 May
- **1,485** HH to be assessed
- First UNHCR/WFP MCAP validation for 2019 completed
- Show rate **94%** out of around **12,500** beneficiaries.
- WFP is introducing a new validation system through Liban post and Cash United. The new system will start mid-May.



# Shelter

---

## Key & Important Updates:

- **The shelter sector completed the partner's Geo-split in North (3W matrix).**
  - Gaps: Bcherri, Koura and Batroun
  - Set certain criteria so partners could highlight a gap within their area of intervention.
- **UNHCR/NRC Referral Analysis**
  - Increase in referral during the 1<sup>st</sup> quarter of 2019
- **COSIMA Analysis (collective site mapping list) for North**
  - Total active sites mapped in north is 138 sites.
  - **86 %** of residents in these site are Syrian
  - **64%** are living in residential building; and 36% are living in non-residential and permanent buildings
  - **92%** of residents are paying rent
  - **71%** of the sites do not have functioning fire extinguishers



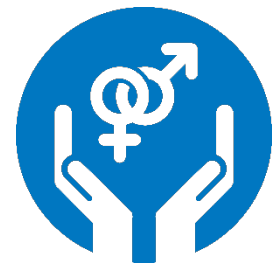
# Protection

---

## Key & Important Updates:

- Around **600** refugees returned to Syria in the 14<sup>th</sup> GSO organized return movement from the North on 8 April.
- Eviction threats in Batroun district have been put on hold.





## Key & Important Updates:

- 5 additional agencies joined the North SGBV WG (Aneera, AIDA, Akkarouna, Heartland and Tabitha Dorcas) – 16 members in the group
- Annual plan will focus on prevention activities
- IRC – SGBV Coaching Programme started on April 3<sup>rd</sup>– 10 Case Workers/Front-liners
- **Main highlights**
  - ✓ Clinical Management of Rape facilities, updated and provided with additional training (MSF assisting in capacitating)
  - ✓ CONCERN Worldwide co-chaired 1<sup>st</sup> Quarter
  - ✓ AND co-chairs 2<sup>nd</sup> Quarter
- **Upcoming developments**

Harmonization of Early Marriage prevention toolkit and Case management procedures Toolkit



# Child Protection

---

## **Key & Important Updates:**

- CM referral pathway is now updated and shared with CP and education actors.
- Planning process is running with UNICEF CP partners for CP activities in the North and Akkar including a revision for the geographical coverage and existing gaps.

## **Current Inter-Sector Discussions:**

- The Multi-Sectoral Child Marriage Prevention and Response toolkit is almost finalized, once officially launched UNICEF will train all interested partners from different sectors on the usage of the toolkit to prevent child marriage.
- Discussions on enhancing referrals from CP to existing youth and education activities.



## Education

### Key & Important Updates: 5Ws exercise were finalized

- contribution from the following 16 Partners:
  - Al-Fayhaa; AAA; ALC; ANERA; AVSI; CWW; Heartland All; IRC; MS; NRC; R&R; RMF; SCI; Taalof Association; WCH; and WVI
- Presentation about the Interagency referral form and referrals for violence cases in public schools were introduced for the Education partners
- Grade 9 and 12 students can apply for the official exams with no papers. Circular was shared in the Education partners meeting
- CERD preliminary registration numbers were published about the number of students from KG1 till Grade 12 in public, semi-private, private and UNRWA schools in Lebanon.
- To join the education mailing list in Akkar and Tripoli, please subscribe your email:  
<http://contacthub.azurewebsites.net/Subscription.aspx>
- Current Inter-Sector Discussions:
  - Out of school initiative – OOSCI- study will be published after Easter.



# Health

---

## **Key & Important Updates:**

- Measles outbreak in the North (380 cases since Jan of which 66% are in Akkar). Response is still ongoing. Several partners have been intervening.
- Huge gap in cash assistance for patient share at SHC level persists.
- Waste management training for all PHCs and Governmental Hospitals by MoPH and AUB based on WHO guidelines
- 3<sup>rd</sup> Acute Watery Diarrhea TF meeting was held with the presence of MoPH head of the Epidemiological surveillance system as well as WHO, UNICEF Water sector lead and main health actors. Follow-up action plan involving concerned ministries has been drafted.

## **Current Inter-Sector Discussions:**

With WASH:

- Acute Watery Diarrhea Action Plan
- Menstrual Hygiene



# Livelihoods

---

## **Key & Important Updates:**

- Livelihoods 3W map EoY 2018 published  
<https://data2.unhcr.org/en/documents/details/68502>
- Outreach, Identification and selection of beneficiaries guidelines – finalized and presented
- UNDP- Call for Proposal- Women's Economic Participation Project (deadline April 30)
- WFP call for proposals for FFT & FFA (deadline April 30)

## **Current Inter-Sector Discussions:**

- Referral from Protection partners to Livelihoods interventions – refresh presentation of the referral mechanism at the last PWG.



# Social Stability

---

## Key & Important Updates:

- Social Stability 3W map EoY 2018
- Conflict sensitivity mainstreaming survey – deadline 18 April
- Tension Taskforce /update
- North WG took place yesterday (Monday 7) focused on support to municipalities presentations by: IOM, SI, SCI, UNDP, DRC, MC, UNHCR, ACTED)
- Interventions maps:  
<https://app.powerbi.com/view?r=eyJrIjoiaMTZlYmM1NzMtMG10NC00ZTZjLWE1MzktODZlZjRmOTUyY2MwIiwidCI6ImZlZTVkYjVlTi5NDQtdNDgzNy05OWY1LTc0ODhhY2U1NDMxOSIsImMiOjh9>

## Current Inter-Sector Discussions:

- SWM Taskforce (SoSt & Water) met on Wed 13 March
  - Interventions mapped/presented (Coopi- Concern- MC- RMF- UNICEF- LebRelief- UNDP-ACTED.).
  - Activity info reporting in 2019 only by: Mercy corps-IOM
- Human-Centered (SoSt & Water) design thinking workshop planned for the 1<sup>st</sup> week of May.

## AOB

---

Page 12

- UNHCR call Center
- Inter Agency Survey reminder
- Update contact list of agencies and service providers in the North
- Contact hub

[Estephan@unhcr.org](mailto:Estephan@unhcr.org) || Contact: 81-991140

**UNHCR New Call Center**  
**06205003**

**THANK YOU.**



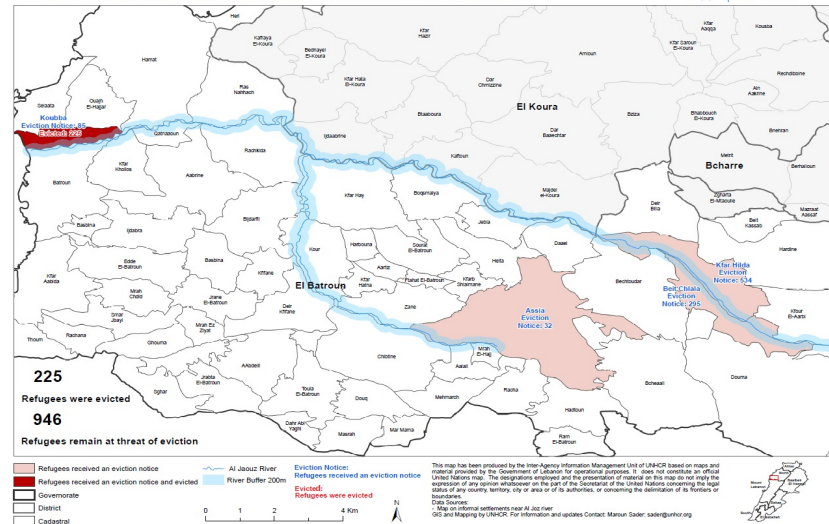
# **Eviction Situation Update Batroun District**

**Inter Agency meeting  
9 April 2019**

# Snapshot

- Affecting Syrian refugees residing in **4 municipalities** in Batroun district
- 45 HH / 225 IND** evicted in Koubba on 11 March 2019
- 31 HH/ 158 IND** relocated from Koubba, Beit Chlela and Kfar Helda between 11 March and 5 April
- Some **870 refugees remain at risk of eviction**

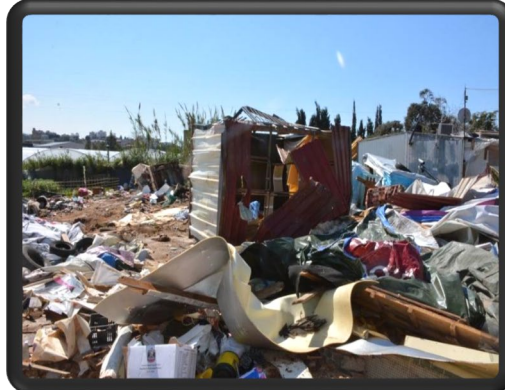
SYRIA REFUGEE RESPONSE  
LEBANON, North Governorate, Evictions and threats of eviction in Batroun district



## Eviction of Syrian refugees from Al Saki area – Koubba municipality

- 6/7 March 2019: eviction notice – deadline 11 March
- 11 March 2019 – **45 families (225 IND) evicted** from makeshift structures
- Destruction of shelters, loss of household items, temporary homelessness
- **10 more HH (52 IND)** have relocated from Koubba after 11 March
- **17 HH / 86 IND remain at risk** of eviction

## Images of affected sites in the Koubbba/Al Saki eviction:



33 Families

15 HH

Batroun (69 Ind.)

2 HH

Selaata (6 Ind.)

1 HH

Wajeh El Hajar (5 Ind.)

Saida, Bekaa and Jbeil (NA Ind.)

7 HH

Relocated within Koubba (25 Ind.)

5 HH

Abou Samra (6 Ind.)

3 HH

El Herri (16 ind.)

## Response to Koubba eviction:

- Solidarités International reached 33 of the 45 families:
  - 69 mattresses
  - 138 blankets
  - 22 hygiene kits
  - 10 baby kits
  - 7 ECA
  - 8 HHs with protection needs were referred to DRC
  - 64 children were referred to Save the Children for PSS and education follow up

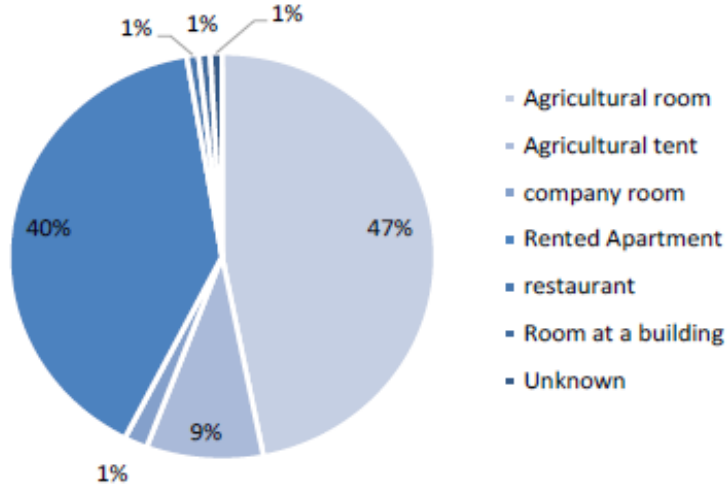


## Eviction threats in other villages in Batroun district

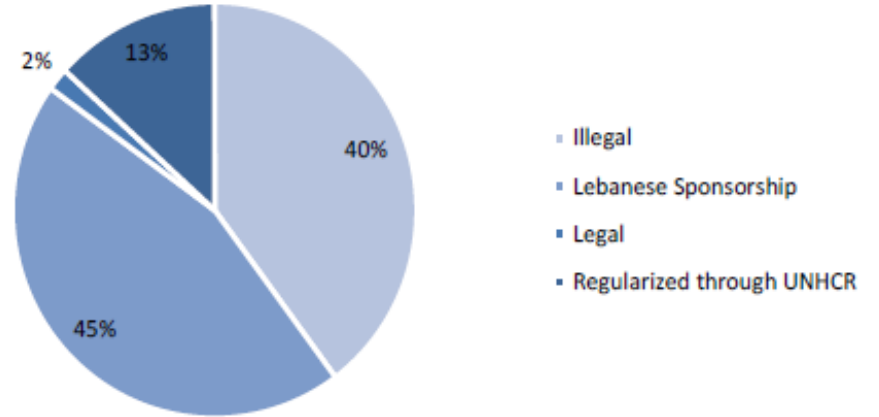


# Kfar Helda– affected HH overview

Shelter Typology of household at risk



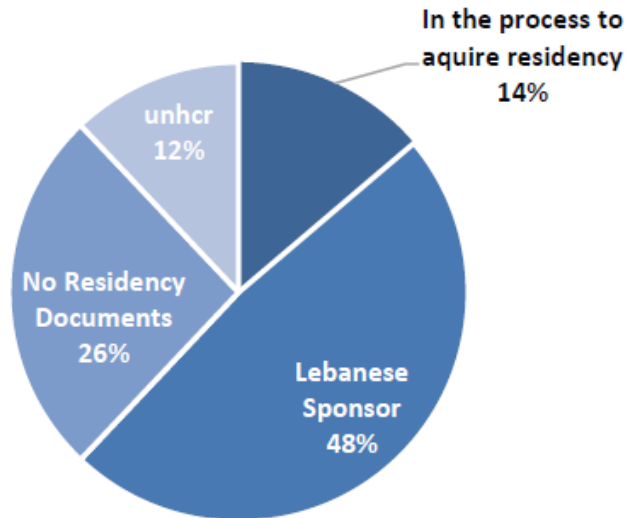
Affected households residency overview



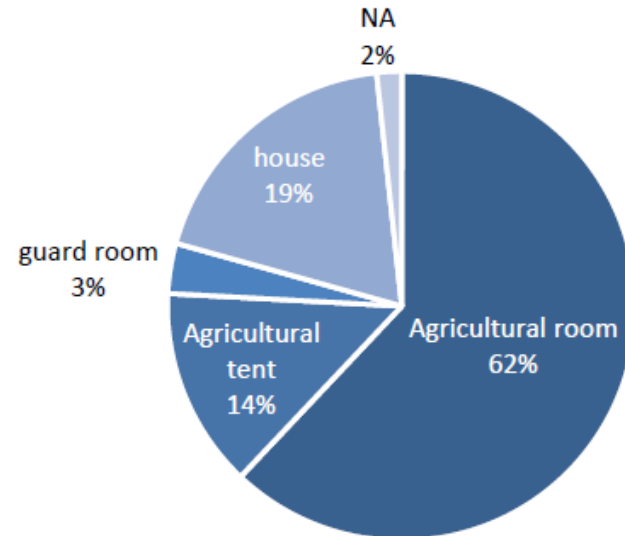


# Beit Chlela – affected HH overview

Affected household residency overview



Affected Household shelter typology





# Lebanon Protection Consortium

Analysis, Response, Advocacy

# What is the LPC?

**Three-phased project started in 2018**

Phase 1: **June 2018 – July 2019**

Phase 2: **August 2019 – March 2020**

Phase 3: **March 2020** →



Funded by  
European Union  
Civil Protection and  
Humanitarian Aid

- Analysis of protection risk
- Response
- Advocacy

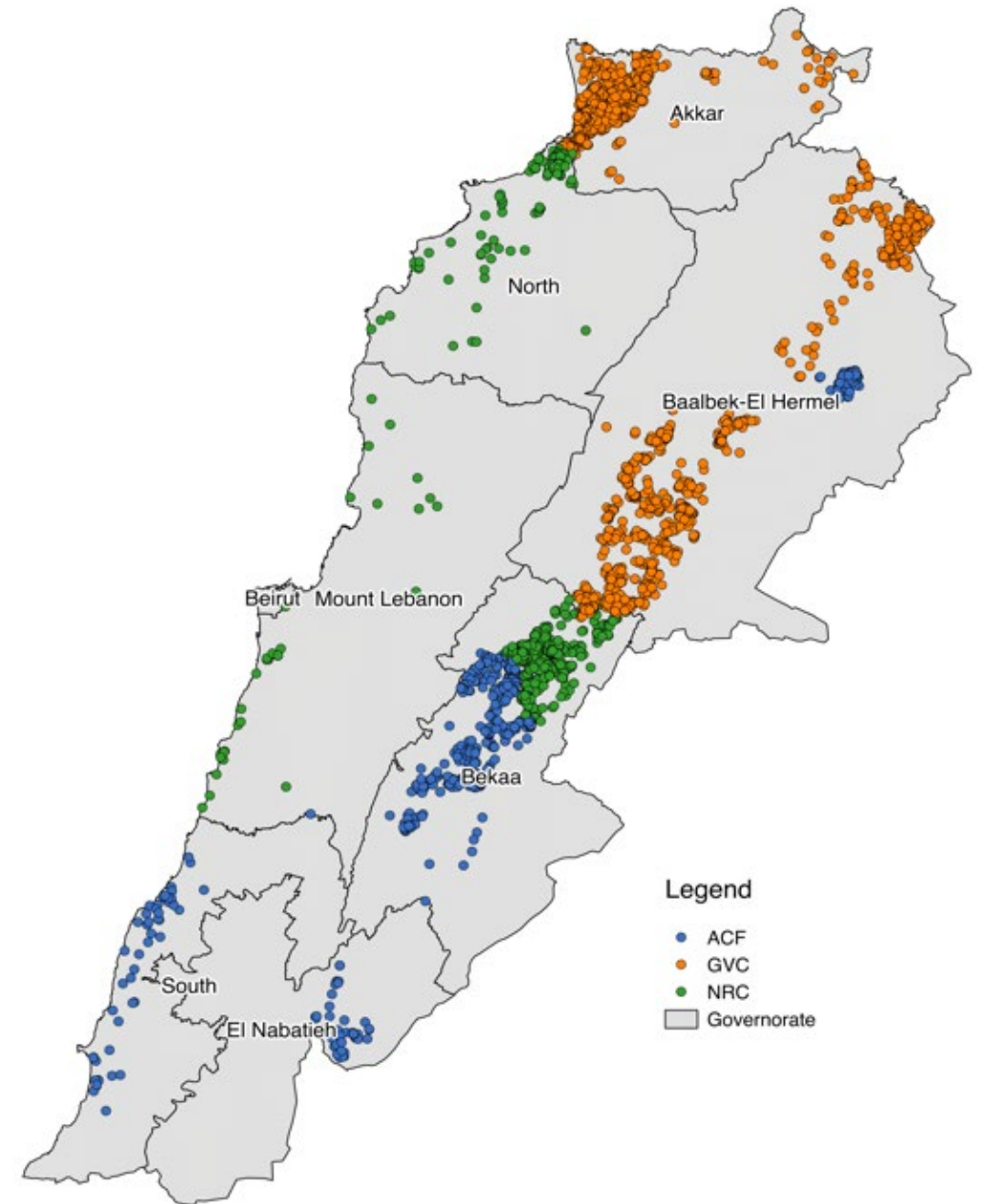
Multi-sectoral, community based approach

**Implementing partners**



# LPC Coverage

**Nationwide** with a focus on Informal Tented Settlements (ITSs) of over four tents and a Palestinian camp (Ein el Helweh)

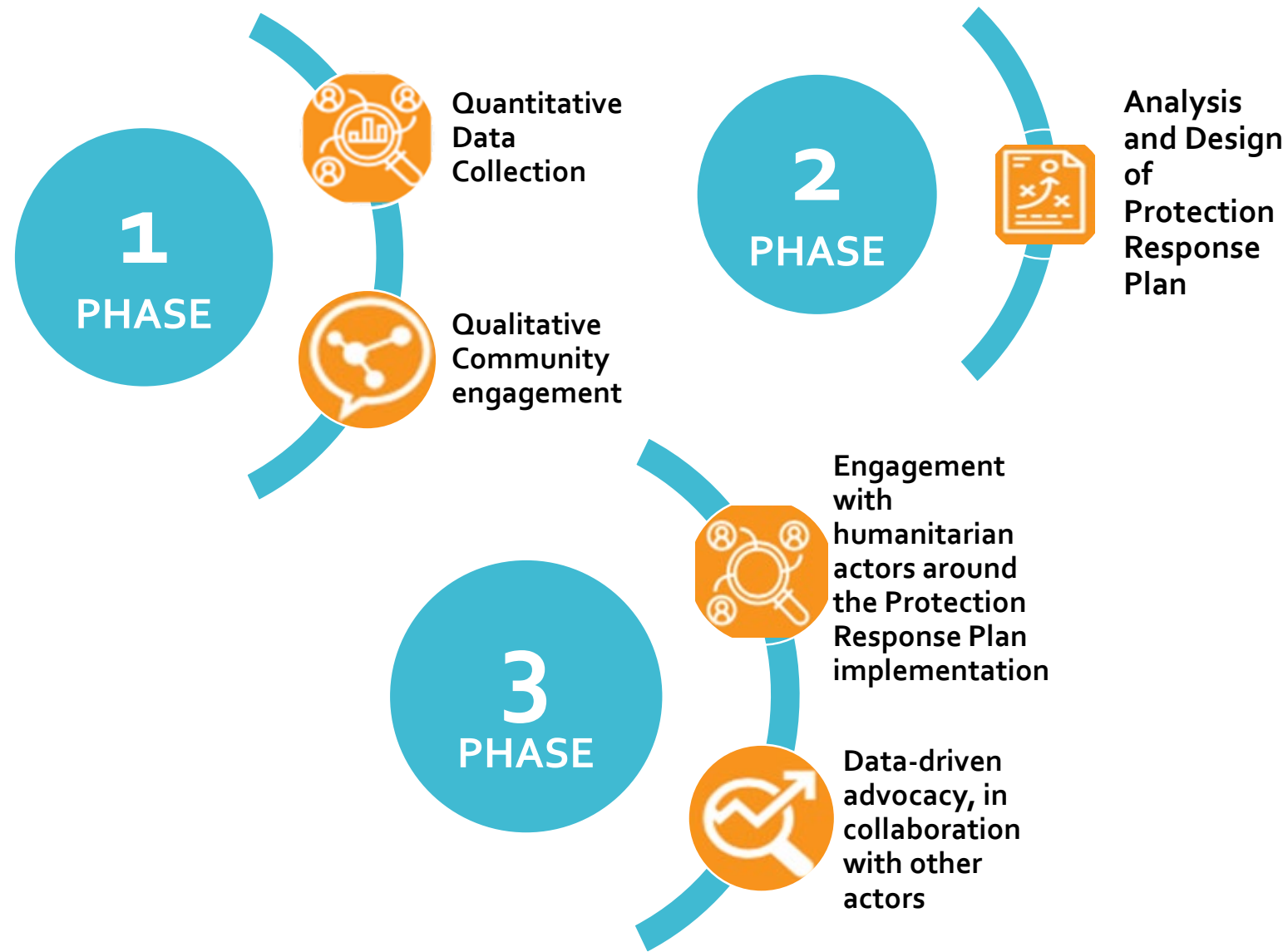




# LPC overarching methodology:

## *Integrated Protection Response*

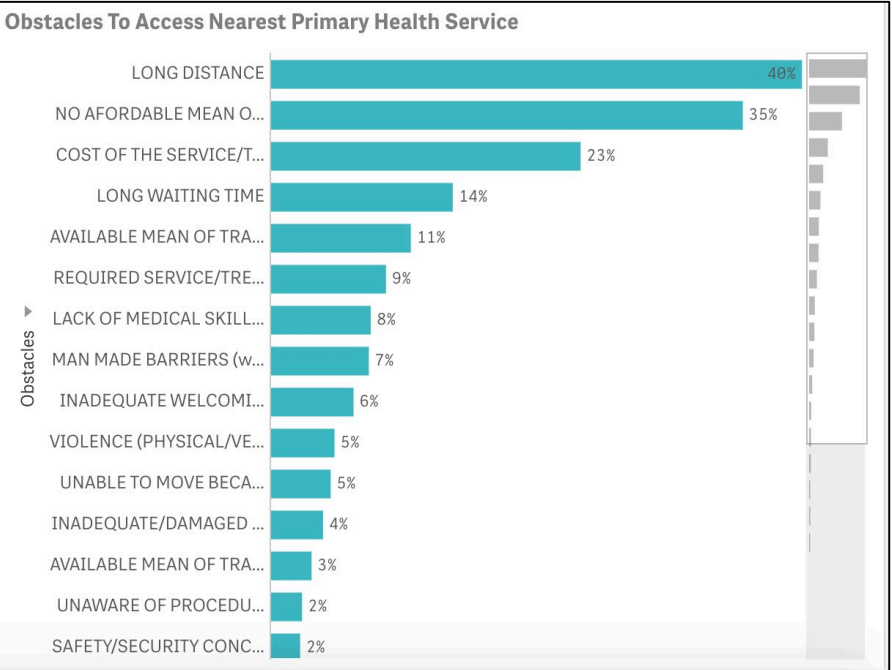
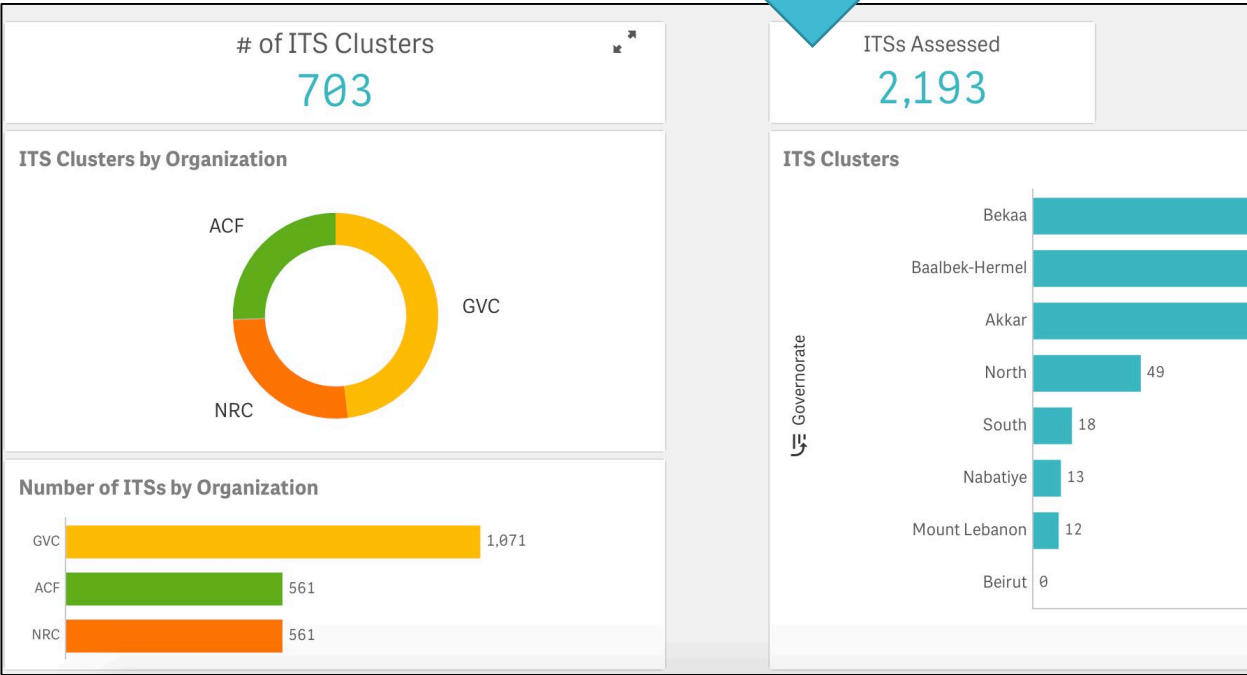
Multi-sector | community based



# Multi-sector questionnaire



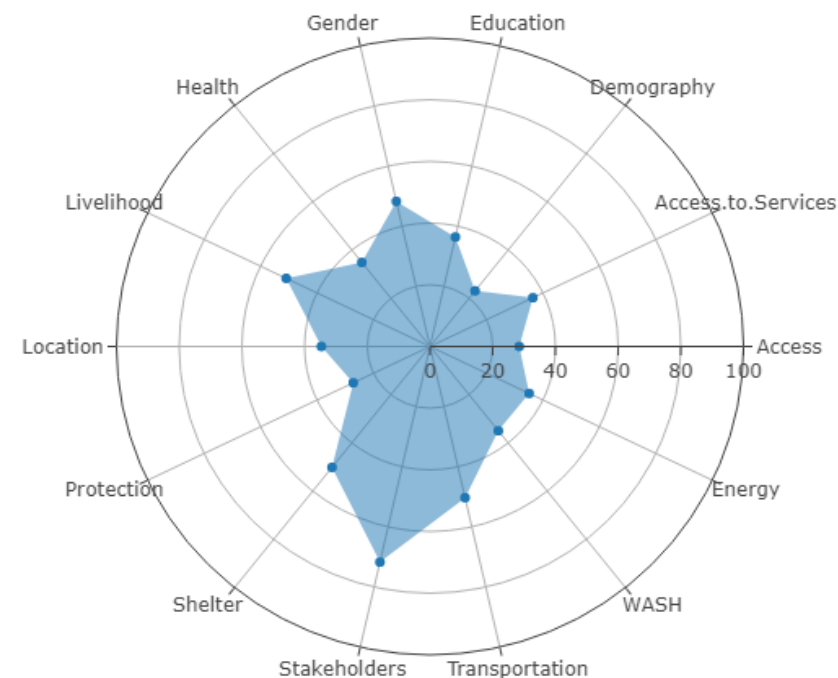
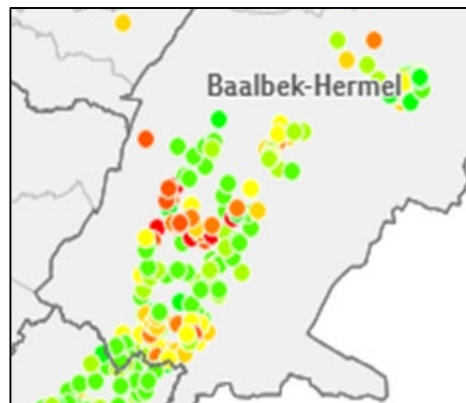
- Quantitative assessment with community representatives (AGD)
- Protection risk from a multiple-sector perspective
- Provides immediate data for analysis / advocacy
- Carried out in every cluster



# Integrated Protection System of Indicators

- Identify protection concerns
- Trigger qualitative discussions
- Inform planning and programming
- Evidence base for advocacy
- Measure **changes** in protection context

$$\text{RISK} = \frac{\text{THREATS} \times \text{VULNERABILITIES}}{\text{CAPACITIES}}$$





# Individual Protection Approach



- Multi-sector questionnaire data could trigger an 'Individual Protection Approach'.
- Empower persons with specific needs to access services;
  - Identify individual protection concerns;
  - Trigger a coordinated approach with existing protection actors in the area;
  - Facilitate a referral as required.





**CPA**

COMMUNITY  
PROTECTION  
APPROACH



# Narrated Community Perspectives



- Focus Group Discussions
- Individual interviews
- Transect walks
- Seasonal calendars
- Resource mapping
- Technical assessments

- Community-centred
- Identifies causes, consequences and coping strategies

# Protection Response Plan



- Multi-sector / multi-level / multi-stakeholder
- An average of 16 PRPs per month, since mid-February
- 40 PRPs have already been designed and are being implemented
- Coordination with best-placed actors





# The LPC's data collection and analysis tools and outputs

## Multi-sector Questionnaire

- Analysis of protection context for advocacy
- Generates the data which underpins the IPSI
- Triggers assessment of immediate needs

## Individual Protection Approach

- Individuals with Specific Needs are identified and addressed through:
  - Referrals
  - Coordination with other actors
  - LPC response when LPC agency is the best-placed actor

## Integrated Protection System of Indicators

- Highlights protection concerns for further analysis
- Provides a "snapshot" of the protection context for advocacy

## Narrated Community Perspective

- Community level protection needs are outlined in the Protection Response Plan (PRP)
- LPC coordinates with 'Best Placed Actors'



# Other LPC Modalities

## Emergency Response

- LPC responds through the inter-agency coordination mechanism
- 1,085 emergency responses carried out
- Cash and in-kind assistance to **new arrivals / evictions**
- WASH / Shelter / Basic Need
- Referrals

## Addressing needs

- LPC identifies, responds, assists, or finds best placed agency for needs that are not directly linked to a shock event.
- Prevent situation deteriorating

## ICLA

- NRC ICLA provides legal services to refugees on issues relating to civil documentation, legal residence and HLP rights.
- Nationwide coverage
- Identification and referral workshops to strengthen referrals within and outside LPC
- Identification of legal protection issues during the CPA process

## Palestinian Response

- Planning to adapt the CPA for the Palestinian camp environment
- Respond to emergencies in coordination with UNRWA
- NRC already running an multi-sector programme in Ozo
- Plan to apply the CPA to add the protection focus

The slide features two teal-colored geometric shapes. On the left, there is a large parallelogram. On the right, there is a smaller triangle pointing towards the center.

Many thanks