

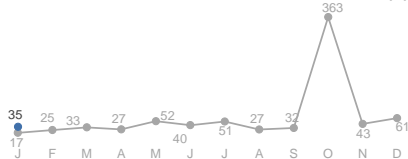
View the interactive dashboard here: <https://unhcr.github.io/dataviz-somalia-prmn/index.html>

TOTAL DISPLACEMENTS

35,000 in January
35,000 (Jan 2020)
17,000 Jan-19

The UNHCR-led PRMN implemented in partnership with NRC reported 35,000 new internal displacements in the month of January 2020. Of these, 28,000 were triggered by conflict /insecurity and 6,000 drought related. New displacements also continue from Lower Shabelle to Banadir (2,000 in the month).

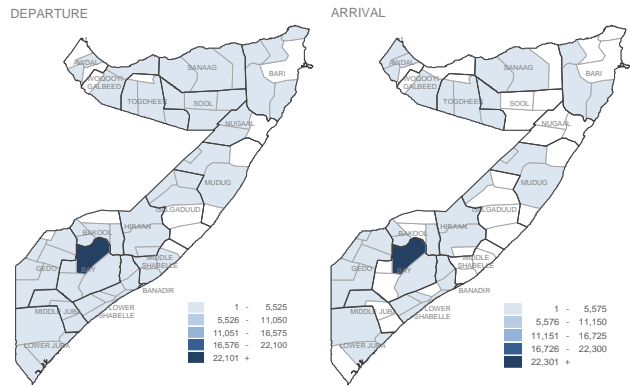
(in thousands)



BY REGION (Jan 2020)

DEP	ARR
Bay	23,160
Lower Shabelle	2,870
Bakool	1,580
Lower Juba	1,310
Gedo	820
Galgaduud	660
Togdheer	620
Middle Juba	580
Bari	500
Sanaag	430
Mudug	400
Middle Shabelle	380
Awdal	360
Sool	320
Banadir	200
Hiraan	180
Nugaal	170
Woq. Galbeed	120

BY DISTRICT (Jan 2020)

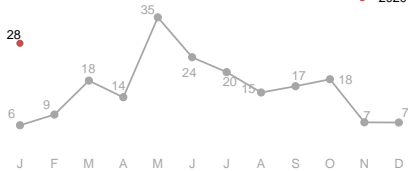


CONFLICT / INSECURITY DISPLACEMENTS

28,000 in January
28,000 (Jan 2020)
6,000 Jan-19

In Bay region, more than 22,000 people were reported fleeing Al Shabaab incursions on Toosweyn, Fool Feyle and other villages near Berdale town. Violence, destruction of property, demands for 'taxation' and child recruits were also reported.

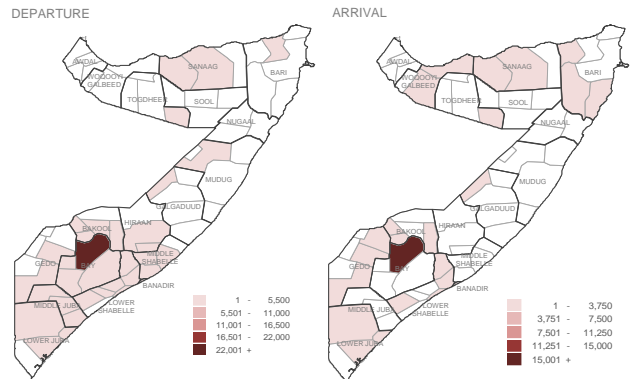
(in thousands)



BY REGION (Jan 2020)

DEP	ARR
Bay	22,170
Lower Shabelle	2,330
Lower Juba	900
Bakool	660
Galgaduud	630
Togdheer	380
Middle Shabelle	300
Middle Juba	240
Gedo	130
Banadir	90
Sanaag	50
Hiraan	40
Bari	20
Mudug	10
Sool	
Awdal	
Nugaal	
Woq. Galbeed	20

BY DISTRICT (Jan 2020)

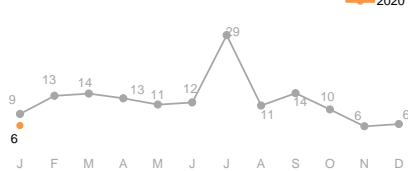


DROUGHT RELATED DISPLACEMENTS

6,000 in January
6,000 (Jan 2020)
9,000 Jan-19

During the month of January, Bay (1,000) and Bakool (1,000) regions were the most affected by new displacements where the main reason given was drought or related lack of livelihoods.

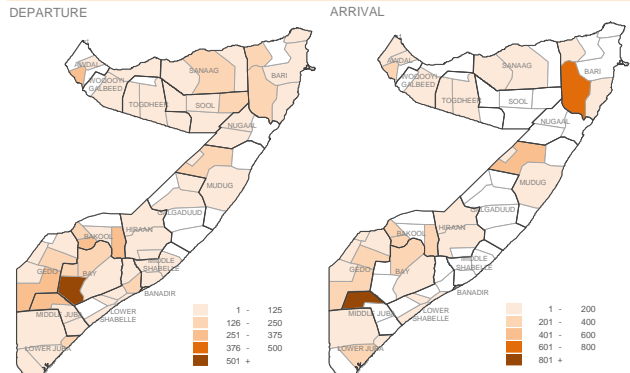
(in thousands)



BY REGION (Jan 2020)

DEP	ARR
Bay	970
Bakool	900
Gedo	610
Bari	450
Lower Shabelle	400
Lower Juba	370
Sanaag	360
Awdal	360
Middle Juba	330
Mudug	300
Sool	220
Nugaal	160
Hiraan	130
Woq. Galbeed	90
Banadir	90
Middle Shabelle	80
Togdheer	70
Galgaduud	30

BY DISTRICT (Jan 2020)

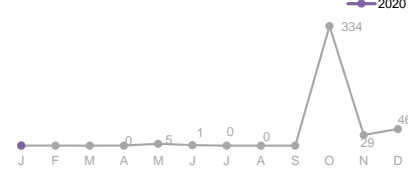


FLOOD DISPLACEMENTS

0 in January
0 (Jan 2020)
0 Jan-19

130 individuals were reportedly displaced due to localized flooding during January.

(in thousands)



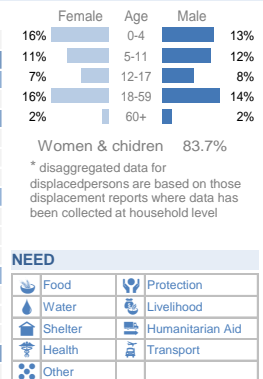
BY REGION (Jan 2020)

DEP	ARR
Lower Shabelle	120
Gedo	10
Hiraan	10
Middle Shabelle	
Bay	
Banadir	110
Middle Juba	
Lower Juba	
Awdal	
Bakool	
Galgaduud	
Sool	
Bari	
Woq. Galbeed	
Mudug	
Sanaag	
Sool	
Togdheer	
Nugaal	

PRIORITY NEED ON ARRIVAL Jan - 2020 in %

DEP	ARR	1	2	3	4	5	6	7	8	9	10
Awdal	15		1	9	75						
Bakool	66			2							32
Banadir	49	3	31	5	1	2	1	7			
Bari	43		7		3	41	6				
Bay	80					2	1				16
Galgaduud			95		5						
Gedo	72	1	8	1	7	7	3				1
Hiraan	70			4	25						
Lower Juba	26		64		2	7					1
Lower Shabelle	19		52		15	14					
Middle Juba	95				4						1
Middle Shabelle											
Mudug	12	9	6	1	6	35		28	3		
Nugaal											
Sanaag	41	8		6	12	31	2				
Sool	55		3	20	22						
Togdheer	4			6	46	21					23
Woq. Galbeed	46	16	2	3	11	16	4	1			

AGE & GENDER (Jan - 2020)*



NEED

Food	Protection
Water	Livelihood
Shelter	Humanitarian Aid
Health	Transport
Other	

About PRMN

The PRMN (Protection & Return Monitoring Network) is a UNHCR-led project which identifies and reports on displacements (including returns) of populations in Somalia. The network also identifies and reports on protection risks and incidents underlying such movements. Only figures collected by PRMN are reported above. Not all displacements in Somalia are captured. This dashboard should be read in conjunction with the Notes on PRMN Methodology (<https://data2.unhcr.org/en/documents/details/53888>) which outline the approach and certain limitations. The figures shown are for numbers of individuals and are based on interviews with key informants and/or displaced households at destination (unless otherwise noted). Further information and datasets available on request use contact below.

Partner
NRC NORWEGIAN REFUGEE COUNCIL

