



### DAILY UPDATE CORONAVIRUS DISEASE-19

As of 23 March 2020, 3 new countries registered COVID-19. Mozambique is the new addition to the WHO Afro Region. Europe remains the new epi-center. The global confirmed number of cases has surpassed 300 000.

WHO reported confirmed COVID-19, 332 930 (40 788 new) cases and 14 510 (1727 new) deaths, CFR 4.4% have been reported globally. In WHO Africa Region, 990 (251 new) confirmed cases and 23 (3 new) deaths, CFR 2.3% in 37 countries.

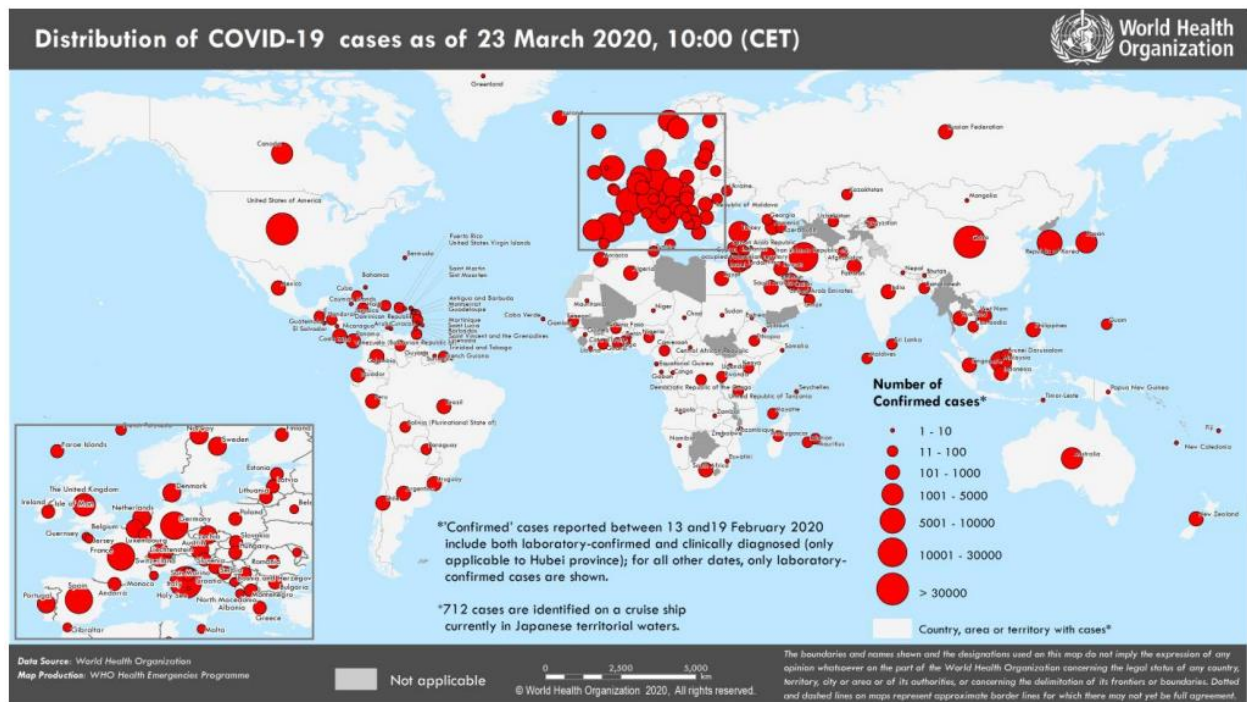


Figure 1. Countries, territories or areas with reported confirmed cases of COVID-19, 23 March 2020.

Below is the surveillance update of travellers from *countries/areas/territories* as at 00.00hrs 23 March 2020.

Table 2. Number of travellers from affected countries/areas/territories under surveillance

Port of Entry	Arrivals 23/03/20	Travel History	Current on follow up	Discharge no symptoms 23/03/02	Cumulative discharges	Cumulative
KIA	35	20 UK 3 USA 12 RSA	375	5	165	540
Chileka	25	3 USA 1 France 1 Australia 8 UK 12 RSA	393	0	40	433
Mwanza	135	262 RSA	432	0	0	432
Dedza PoE	104	153 RSA	891	0	0	891
Total	299		2091	5	205	2296

In the last 24 hours, there was one suspect that was investigated as a contact to a case that was confirmed in Australia a few days after leaving Malawi. Sample was sent to the laboratory and results are yet to be out.

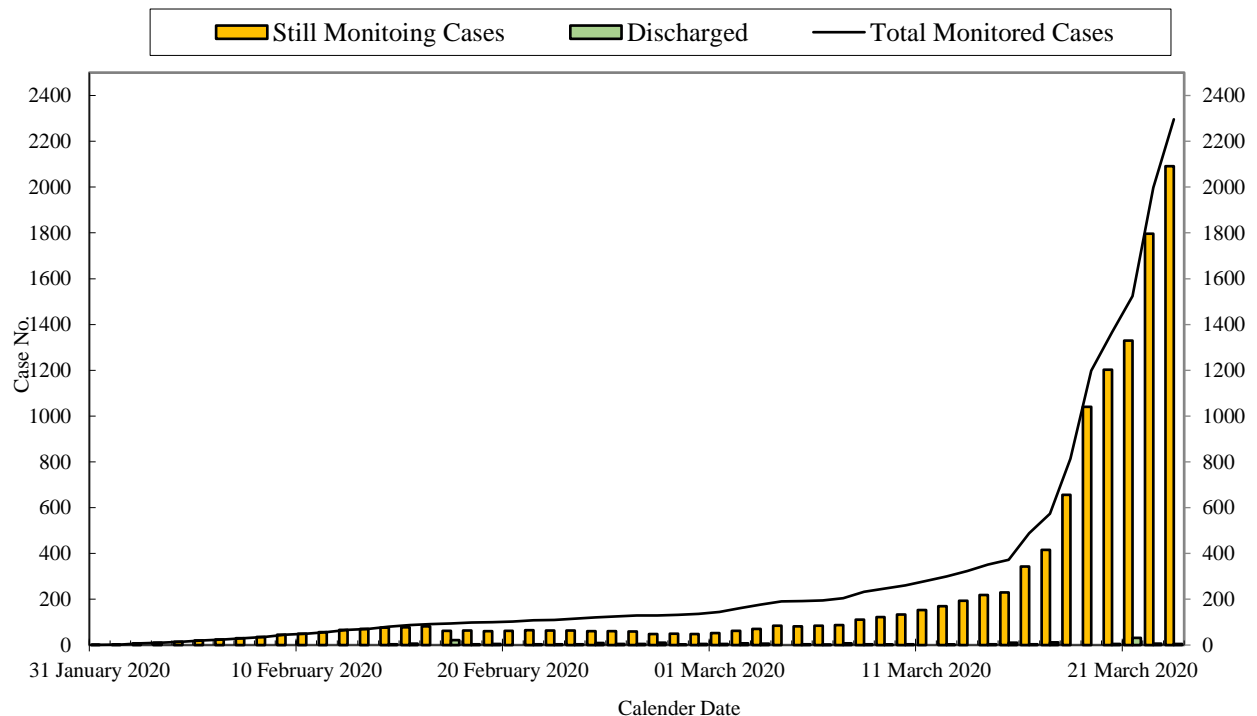


Figure 3: Cumulative people on follow-up for COVID-19 surveillance for Malawi, 23 March 2020

In the past 48 hours the Public Health Reference Laboratory tested 6 samples on RT-PCR and all were negative for COVID-19.

The Ministry of Health and partners continue in its efforts to ensure the citizens are protected from the Coronavirus outbreak and that the country is able to detect and respond to any cases that may arise.

#### **Some of the activities Being Conducted**

- Continue screening of travellers in all points of entry
- Providing media updates of current global and local situation
- Radio jingles on COVID-19
- Press release
- Private sector engagement
- Dissemination of information through social media (MoH Facebook page : <https://www.facebook.com/malawimoh> )
- Responding to rumours and misinformation to counteract infodemic
- Continuous media engagement
- Capacity building for health workers
- In-country laboratory confirmatory testing for COVID-19
- Weekly technical committee meetings to update strategies as new knowledge comes to light
- Working to establish a toll-free line for inquiries (0887 37 12 88)

**Prepared by: Epidemiology, Public Health Institute of Malawi (PHIM), available on <http://malawipublichealth.org/>**