



LCRP & STRATEGY



LCRP 2017-2020 - Full 2020 update

LCRP 2020 - Protection sector strategy

LCRP 2020 - Protection sector logframe

LCRP 2020 - Key facts and figures
(pending)

PROTECTION WORKING GROUP

2020 Workplan

- Protection sector
- SGBV Task Force
- Child Protection Working Group

Protection sector - 2019 Year-end dashboard

Multi-sectoral monthly statistical dashboard (January 2020)

PWG Terms of Reference

Protection Core Group Membership



KEY SECTOR GUIDANCE

Minimum Standards and Procedures for Individual Referrals (May 2019)

Guidance on the Response to Evictions in Lebanon (May 2019)

Standard Operating Procedures (SOPs) for SGBV Prevention and Response in Lebanon (December 2014)

Minimum Standards for Child Protection in Humanitarian Action in Lebanon (2018)

Guidance Note on Prevention and Response Activities for Children and Caregivers in Lebanon (2018)

Guidance on Protection and Emergency Cash (pending)

Minimum Standards on Community-Based Interventions (pending)

DATA PORTAL & QUICK LINKS

Protection Working Group

Child Protection (CP) in Emergencies Working Group

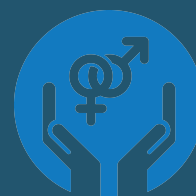
- DropBox CP Working Group

Sexual and Gender-Based (SGBV) Task Force

- DropBox SGBV Task Force

VASyR Hub

Lebanon Factbook





THEMATIC ISSUES

Child labour

- Child Labour in Agriculture: The Demand Side (*July 2019*)
- In Focus: Child Labour in Lebanon (*November 2018*)

Child marriage

Civil documentation

Evictions

- Collective Evictions in Lebanon. Dashboard covering 2019 (*February 2020*)
- Collective Evictions in Lebanon. Dashboard covering 2018 (*March 2019*)
- In Focus: Evictions of Syrian Refugees in Lebanon in 2018 (*February 2019*)
- Evictions of Syrian Refugees in 2017 (*April 2018*)
- In Focus: Evictions of Syrian Refugees in Lebanon (*May 2017*)

Gender

- Gender in the 2017 Vulnerability Assessment of Syrian Refugees in Lebanon (*March 2018*)

Legal residency

Persons with specific needs

- Older Persons in Lebanon (*August 2017*)

Restrictive measures

- Curfews in Lebanon (January 2020)
- Raids in Lebanon (June-December 2019)
- Shop closures in Lebanon (June-December 2019)

KEY ASSESSMENTS

Vulnerability Assessment of Syrian Refugees in Lebanon (VASyR) (*December 2019*)

- VASyR 2019 - Protection Chapter
- VASyR 2019 - Gender Chapter (*pending*)

Vulnerability Assessment for Refugees of Other Nationalities in Lebanon (VARON) 2018 (*October 2019*)

Adolescent Girls and Boys Need Assessment - Focus on child labour and child marriage (*2018*)

Assessment Registry

Knowledge gaps & research questions

CONTACT

Elsa Bousquet, Protection sector coordinator, bousquet@unhcr.org

Hyunju Park, SGBV Task Force coordinator, parkh@unhcr.org

Jackline Atwi, CP Working Group coordinator, jatwi@unicef.org

