

KEY FIGURES

 **2,039,092**

INTERNALLY DISPLACED POPULATION

in Northeast states of Borno, Adamawa, Yobe, Taraba, Bauchi and Gombe, 91% due to insurgency, 8% communal clashes and 1% natural disaster. 1,836,081 of the IDPs are in Borno, Adamawa and Yobe states. Source: DTM -RXXX Dec 2019.

 **540,049**

internally displaced population out of which 262,722 are in Northwest states of Katsina, Zamfara, Kaduna, Sokoto and Kano states while the remaining 277,327 are in Northcentral states of Benue, Plateau and Nassarawa states. Source: DTM -NCNW RII Dec 2019.

 **281,846**

NIGERIAN REFUGEES REGISTERED IN CAMEROON, CHAD, AND NIGER

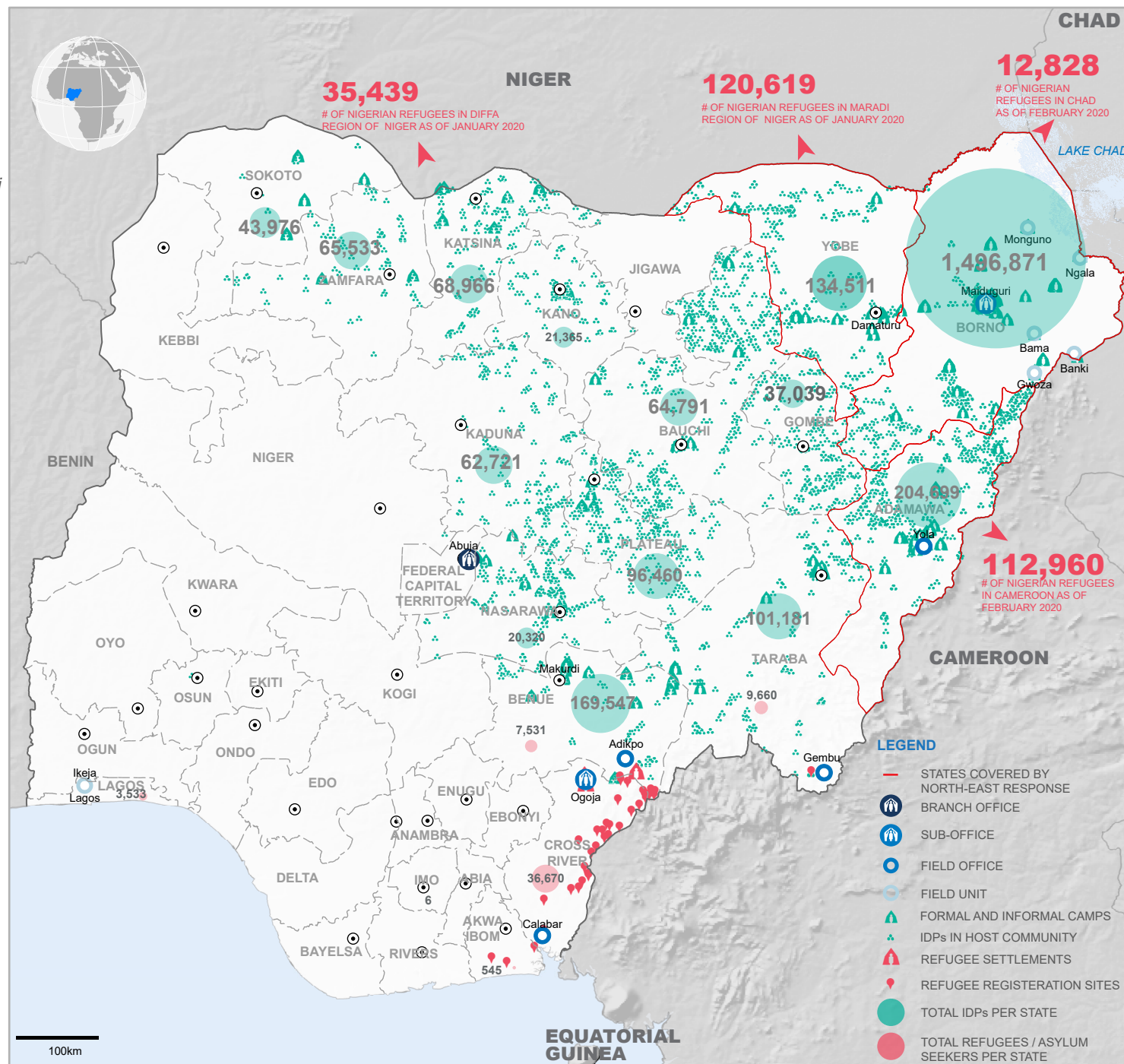
 **57,947**

REFUGEES AND ASYLUM SEEKERS REGISTERED IN NIGERIA

UNHCR - as of February 2020.

SITUATION OVERVIEW

Nigeria faces immense humanitarian and protection challenges due to the ongoing insurgency in the North East. The conflict has caused grave human rights violations, impacting particularly on the most vulnerable civilians. As of December 2019, there are 2,039,092 internally displaced persons in the the Northeast region, with 95% of the displacements in Borno, Adamawa and Yobe states. Outside of the Northeast an estimated 540,049 people are displaced due to banditry and farmer-herders conflict. There are 57,947 registered refugees and asylum seekers as of February 2020, 63% are located in Cross Rivers, 17% in Taraba, 13% in Benue and 6% registered in Lagos which are urban refugees and asylum seekers. There are 281,846 Nigerian Refugees in neighbouring countries of Niger (55%), Cameroon (40%), and Chad (5%).



DISCLAIMER: The boundaries and names shown and the designations used on this map do not imply official endorsement or acceptance by the United Nations.

UPDATED: February 2020

SOURCES: UNHCR, IOM DTM, HDX FEEDBACK: nigabim@unhcr.org