



### GENERAL FINDINGS

22 430

Survey Respondents

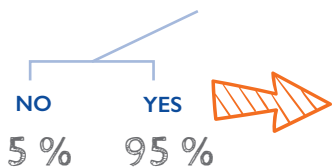


51,38 % Women 48,58 % Men  
\* 0,04 intersexual

Municipality	Survey respondents and family group		
	Women	Men	Total
Riohacha	53 %	47 %	100%
Maicao	59 %	41 %	100%
Barranquilla	53 %	47 %	100%
Soledad	57 %	43 %	100%
Campo de la Cruz	52 %	48 %	100%
Puerto Santander	58 %	42 %	100%
Cúcuta	55 %	45 %	100%
Villa del Rosario	53 %	47 %	100%
Bucaramanga	49 %	51 %	100%
Medellín	54 %	46 %	100%
Arauca	51 %	49 %	100%
Soacha	50 %	50 %	100%
Bogotá D. C.	49 %	51 %	100%
Cali	52 %	48 %	100%
Pasto	47 %	53 %	100%
Ipiales	48 %	52 %	100%



Do you have any form of identity document?



What document do you have?

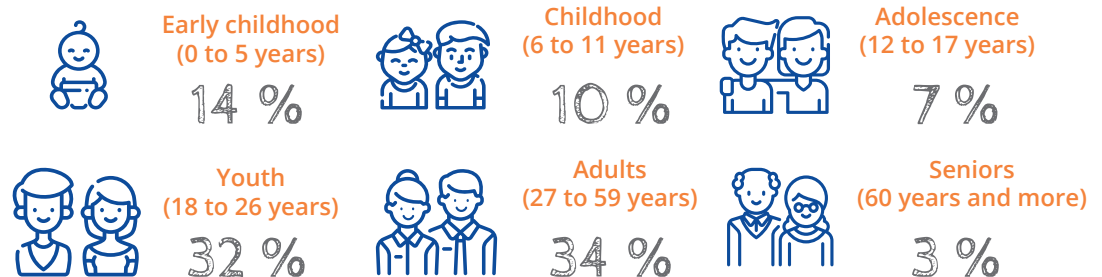
- < 1 % Colombia passport
- 5 % Birth registration
- 70 % Venezuelan identity card
- 1 % Colombian identity card
- 24 % Birth certificate

### DATA OF THOSE SURVEYED

- 9 % Colombian citizenship card
- 20 % Venezuelan passport
- < 1 % Other documents

Note: Percentages total more than 100% because those surveyed were allowed to select more than one document type.

### AGE GROUP OF THE POPULATION



With financial support from:



U.S Department of State: Bureau of Population, Refugees, and Migration



With financial support from European Union (EU)



## Household Data

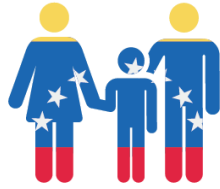
TOTAL HOUSEHOLDS SURVEYED 15 293

TOTAL INDEPENDENT INDIVIDUALS 4884

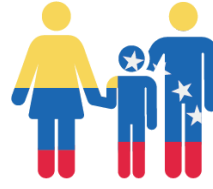
TOTAL INDIVIDUALS SURVEYED WITH NON-FAMILY GROUPS 2253

## NATIONALITY

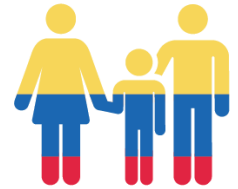
## DEMOGRAPHIC DATA OF THOSE IDENTIFIED



83,60 %  
Venezuelan households



15,70 %  
Mixed households



0,69 %  
Colombian households

## Education levels of minors under 17 years of age



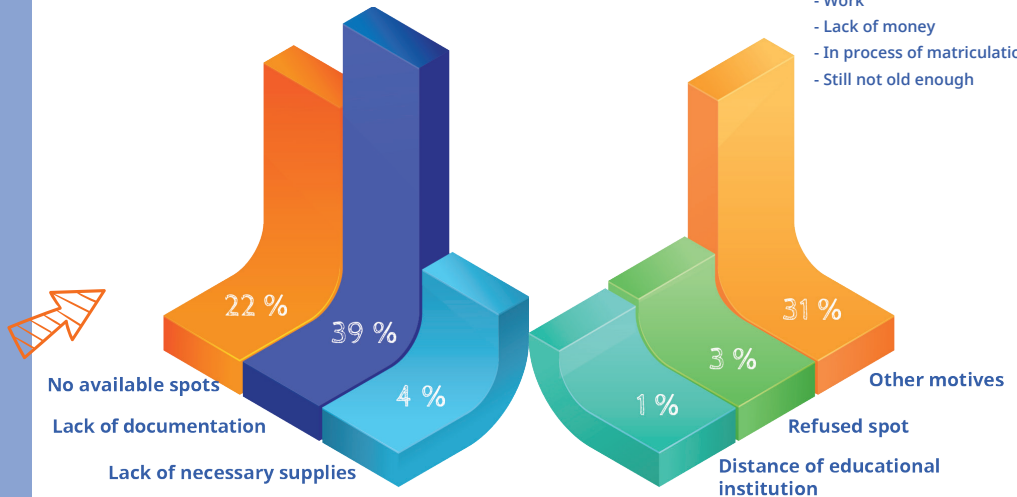
Without access to early childhood education 72 %  
Has access to early childhood education 27 %  
Don't know / Did not respond 1 %

### Children under 5 years of age



Does not study 53 %  
Studies 47 %

## Reasons why not currently enrolled in school



## SCHOOLING



DO YOU KNOW HOW TO READ?

NO 2 %  
SÍ 98 %



DO YOU KNOW HOW TO WRITE?

NO 1 %  
SÍ 99 %

## Level of Schooling



- 2 % → Initial education (pre-kindergarten, kindergarten, preparatory)
- 18 % → Basic General Education (1st-3rd grade)
- 13 % → Complete Elementary Education (1st-6th grade)
- 40 % → High School Education (High school diploma)
- 9 % → Technical Degree (Associates degree)
- 10 % → Higher Education (professional training: higher technical degree, some university)
- 5 % → Higher Education (Undergraduate degree: professional license, other professional certification)
- 1 % → Higher Education (Post-graduate work: specialization, masters, doctorate)
- 2 % → Does not have any formal education

With financial support from:




U.S. Department of State: Bureau of Population, Refugees, and Migration




With financial support from European Union (EU)



# LABOR MARKET



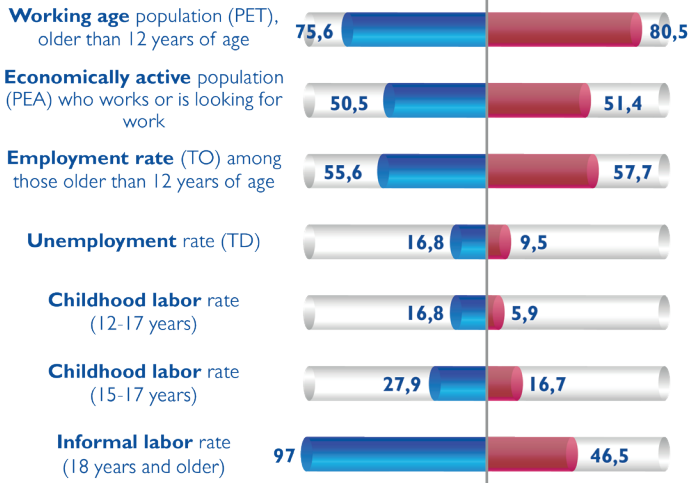
**61 091**  
People identified



**DANE**  
INFORMACIÓN PARA TODOS  
Large Integrated Household Survey (GEIH) Labour market  
Fourth quarter 2019

LABOR PROFILE OF THE VENEZUELAN MIGRANT POPULATION

LABOR PROFILE OF THE COLOMBIAN POPULATION



**Working age population (PET)**, older than 12 years of age

DTM		DANE (GEIH)	
Men	Women	Men	Women
74,4	76,8	78,1	78,1

**Economically active population (PEA)** who works or is looking for work

DTM		DANE (GEIH)	
Men	Women	Men	Women
55,2	46,1	58,9	43,2

**Employment rate (TO)** among those older than 12 years of age

DTM		DANE (GEIH)	
Men	Women	Hombres	Women
65,1	46,8	69,4	47,8

**Unemployment rate (TD)**

DTM		DANE (GEIH)	
Men	Women	Men	Women
12,3	22	8	13,5

**Childhood labor rate (12-17 years)**

DTM		DANE (GEIH)	
Men	Women	Men	Women
21,1	12,5	7,8	3,9

**Childhood labor rate (15-17 years)**

DTM		DANE (GEIH)	
Men	Women	Men	Women
35,6	20,2	10,8	6,7

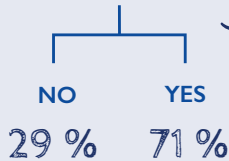
**Informal labor rate (18 years and older)**

DTM		DANE (GEIH)	
Men	Women	Men	Women
96,1	97,6	48,1	51,5

1. DANE defines the PET according to the international conferences on labor statistics.  
2. Law 1098 (2006), Childhood and Adolescence establishes 15 years as the minimum age for work among minors.



**DO YOU HAVE ECONOMIC DEPENDENTS?**



**Do you send money outside of Colombia?**



**How many economic dependents do you have?**



**What country are they in?**



Note: Percentages total more than 100% because those surveyed were allowed to select more than one country.

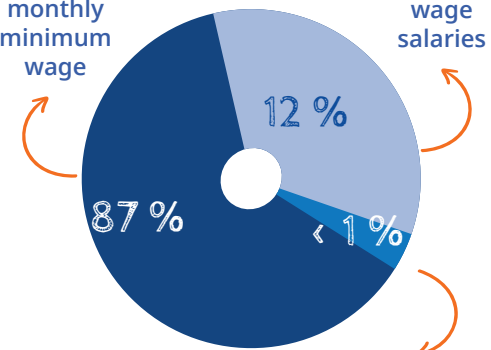
**To how many people do you send money?**

**On average: 2**  
People

## AVERAGE MONTHLY INCOME

Less than the legal monthly minimum wage

1-2 minimum wage salaries



More than double the minimum wage

**SMLV:** 2019 COP \$ 828 116 USD \$ 240

Current (2019) legal minimum wage in Colombia.

With financial support from:



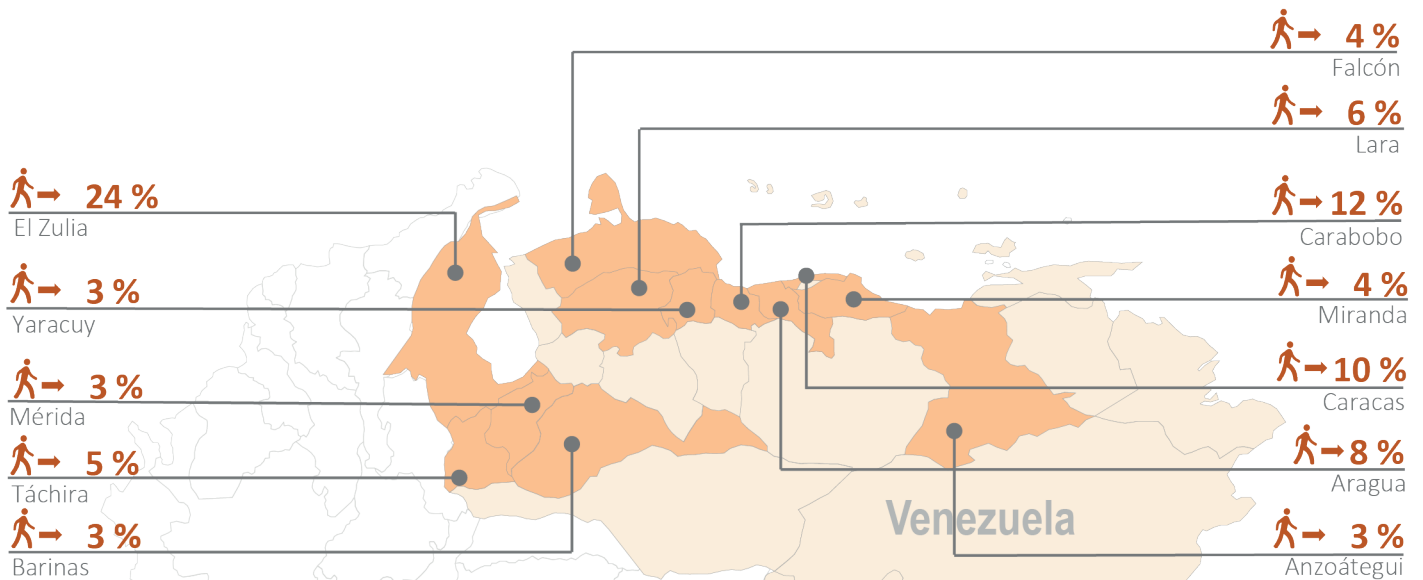
U.S. Department of State: Bureau of Population, Refugees, and Migration



With financial support from European Union (EU)



MAIN ORIGIN STATES IN VENEZUELA



What is the primary reason why you left Venezuela?

76 %

Economic

What is the main reason why you chose this destination?

60 %

Labor opportunities

With whom were you living in Venezuela?

Alone 4 %  
With a family group 96 %

YES 45 % NO 47 %  
NO RESPONSE 5 % DON'T KNOW 3 %

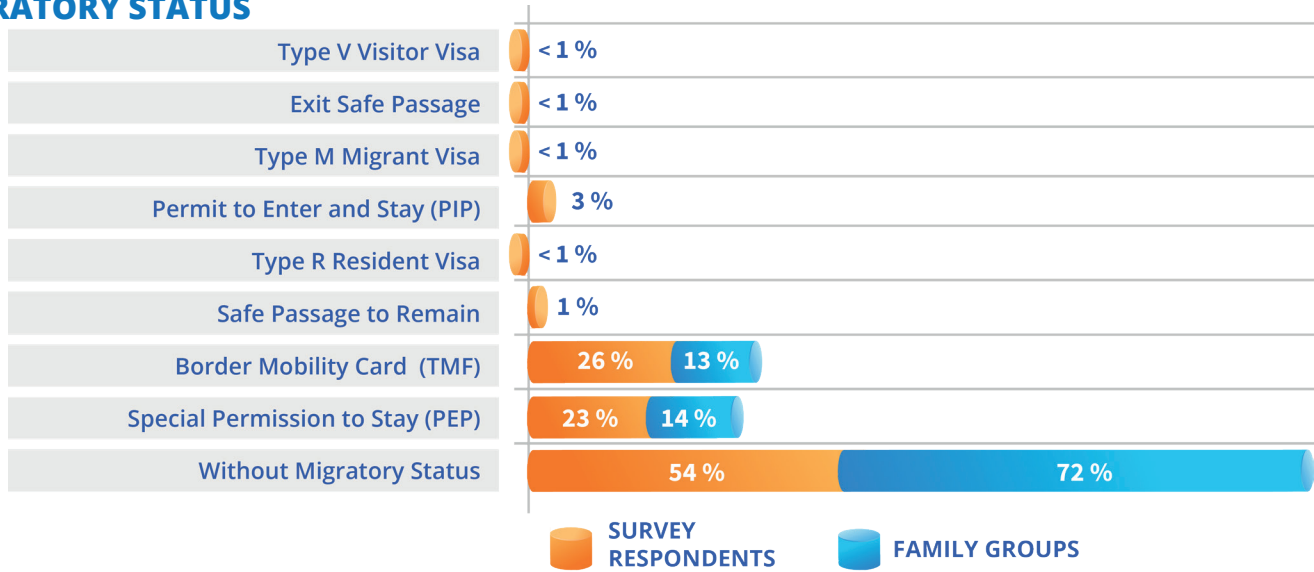
If you are going to receive family members or other known individuals from Venezuela

Average  
How many family members? 3 People  
How many other known individuals? 1 People

Time residing in Colombia?

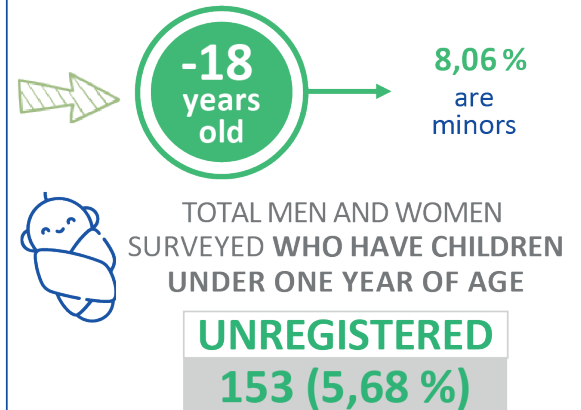
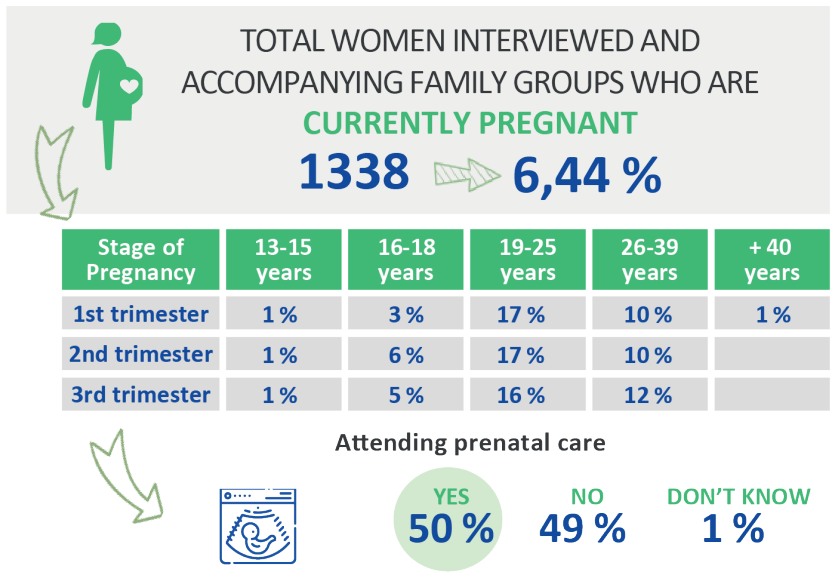
3 % Less than one month 21 % 7-12 months 15 % 2-3 years  
23 % 6 months 32 % 1-2 years 6 % More than three years

## DOCUMENTATION OF MIGRATORY STATUS



Note: Percentages total more than 100% because those surveyed could select more than one document type.

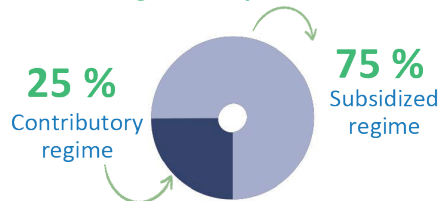
## HEALTH



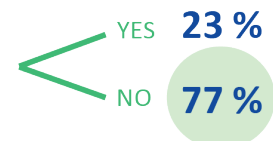
Are you currently affiliated with the general social security system?



**What regime are you affiliated with?**



Do you know the procedures for requesting a **SISBEN** survey?



With financial support from:



U.S. Department of State: Bureau of Population, Refugees, and Migration



With financial support from European Union (EU)



## HOUSING AND HABITABILITY

**86 %** of those surveyed pay rent

**Where do you currently live?**

Average monthly value

**41 %** Apartment **COP \$ 626 879**

**39 %** House **COP \$ 519 626**

**8 %** Low-income housing **COP \$ 352 377**

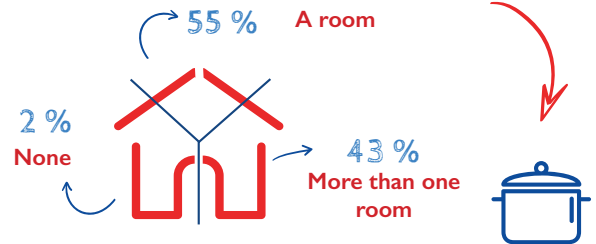
How many people in your family group live with you?

**Average**  
**3,5**  
**People**

Average number of people who live in the same living unit

**6**  
**People**

How many exclusive rooms do you and your family group have?



## FOOD SECURITY



HOW DO YOU OBTAIN FOOD?

Purchase **93 %**

Work-for-food **1 %**

Others, which? **1 %**

Donation **1 %**

Community table **1 %**

In the last three months in your home, have you all had to skip breakfast, lunch, or dinner because you did not have the resources to obtain food?

YES **61 %**

With financial support from:



U.S. Department of State: Bureau of Population, Refugees, and Migration



With financial support from European Union (EU)





TOTAL NUMBER OF INDIVIDUALS **WITHOUT DOCUMENTS** → **2763** → **2016** Family group / **747** Surveyed individuals

## PROTECTION, SECURITY AND DIGNITY

### ETHNICITIES

- 30 % Indigenous
- 30 % Mestizo
- 22 % Brown
- 12 % African descendent / Afro-Colombian
- 3 % Black
- 2 % Mulato
- 1 % Other

### SEXUAL ORIENTATION OF SURVEY RESPONDENTS

**96 % Heterosexual**

**1 % Homosexual**

**1 % Bisexual**

**2 % No information**

**17 %** SELF-IDENTIFICATION AS



Do you feel secure in the home where you live?

YES: 88 %

NO: 11 %

DID NOT RESPOND: 1 %

Have you experienced discriminatory aggressions?

YES: 40 %

NO: 60 %

Is it possible that those minors in your family group could be victims of sexual violence, forced recruitment, drug abuse, or forced labor?

YES: 33 %

NO: 66 %

DID NOT RESPOND: 1 %



HAVE YOU WORKED WITHOUT RECEIVING THE AGREED UPON PAYMENT?

4 % Yes, and I received less than the contracted sum

19 % YES

77 % NO

Have you had an act of violence committed against you?

15 % YES

84 % NO

1 % DID NOT RESPOND

With financial support from:



U.S. Department of State: Bureau of Population, Refugees, and Migration



With financial support from European Union (EU)



## Have you received any kind of assistance on the part of any Colombian institution?

YES 20 % NO 80 %



### What type of help have you received mainly?

67 % Food rations  
35 % Means of livelihood (building materials / inputs)  
14 % Personal care kits

Note: Percentages total more than 100% because those surveyed were permitted to select more than one kind of aid.

### What entity has been the principle provider of help?

37 % Churches / religious congregations  
25 % Red Cross Colombia  
21 % International Organizations  
8 % Mayor

## RECEIVED HELP AND SOCIAL SUPPORT NETWORKS

### Do you currently belong to any organization, movement, or group?

YES 2 % NO 98 %

### Do you know your rights and how to access them?

YES 24 % DID NOT RESPOND 1 %  
NO 75 %

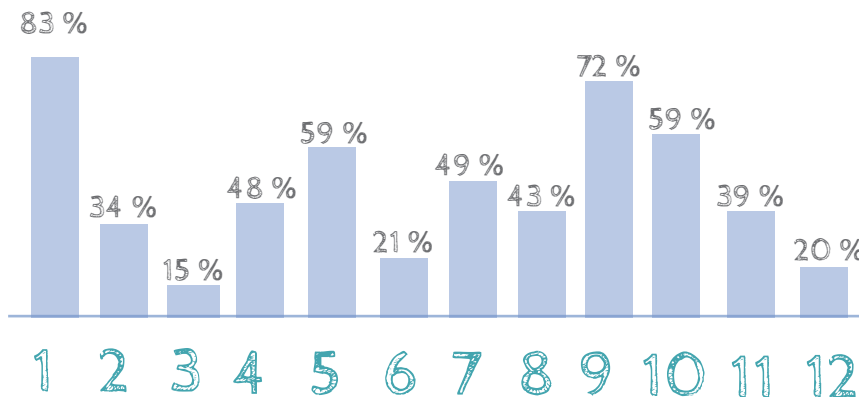


## INFORMATION AND GUIDANCE REQUESTED BY MIGRANTS



### What themes or information was requested by those surveyed?

1. Employment
2. Family reunification
3. Return
4. Legal consultation
5. Food
6. Shelter or housing
7. Migratory regularization
8. Humanitarian assistance
9. Access to healthcare
10. Access to education
11. Nacionalization
12. Family planning



Note: Percentages total more than 100% because the surveyed population was able to select more than just one kind of necessity.

### What do you and your family need in order to establish yourselves in this municipality?

84 % Income / employment generation

65 % Medical help

60 % Education and training

Note: Percentages total more than 100% because the surveyed population was able to select more than just one option.

With financial support from:



U.S. Department of State: Bureau of Population, Refugees, and Migration



With financial support from European Union (EU)

